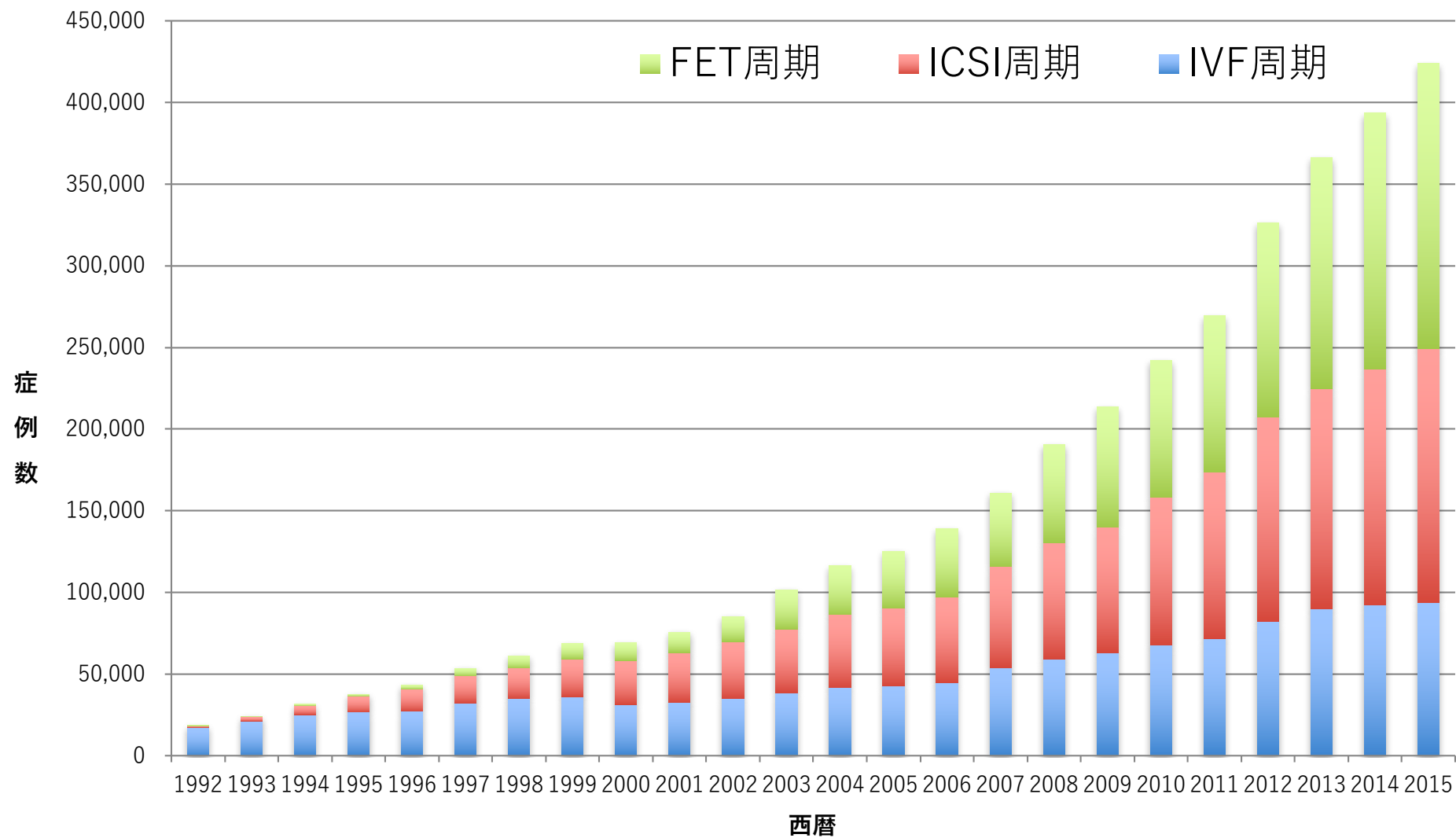
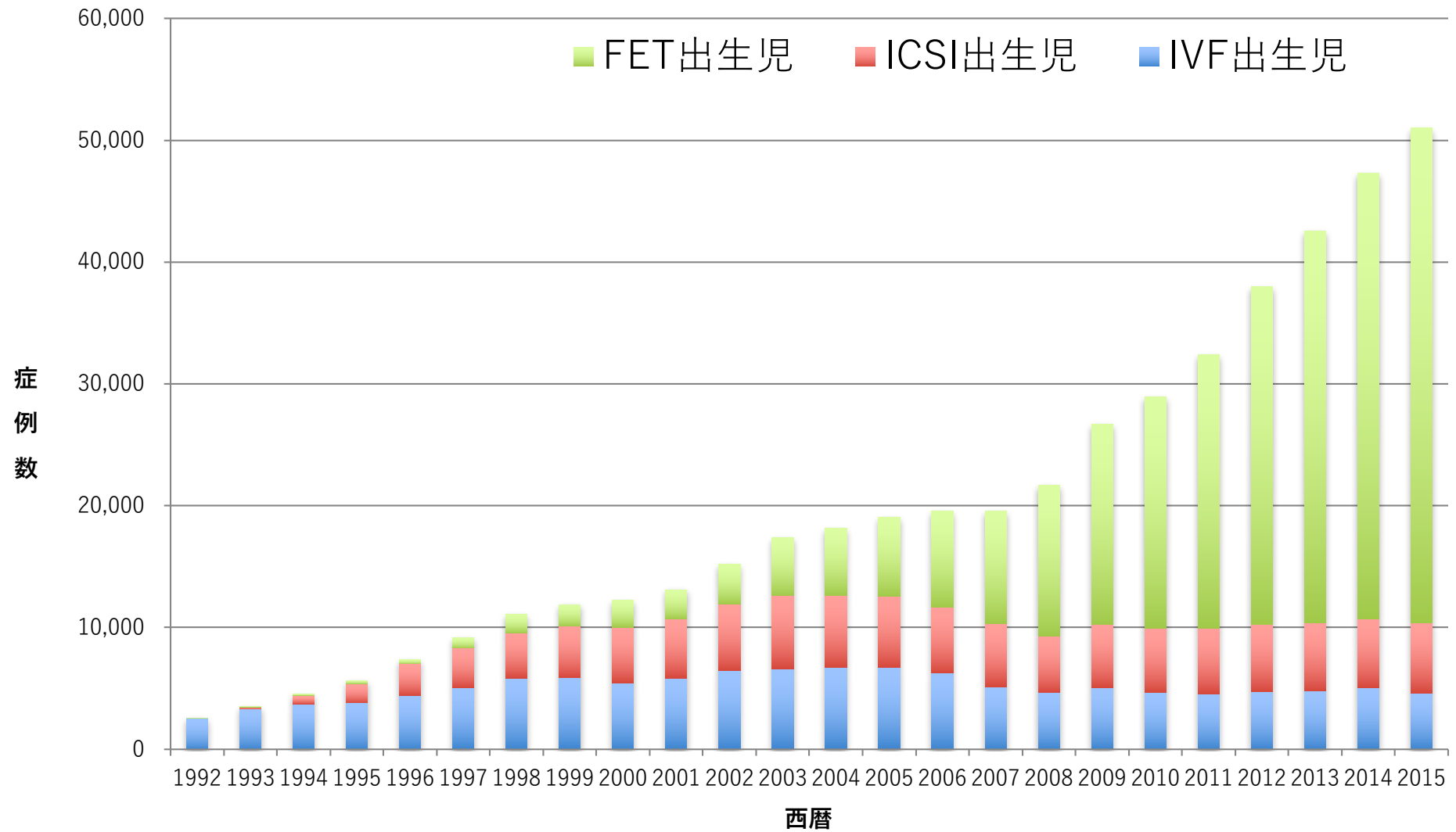


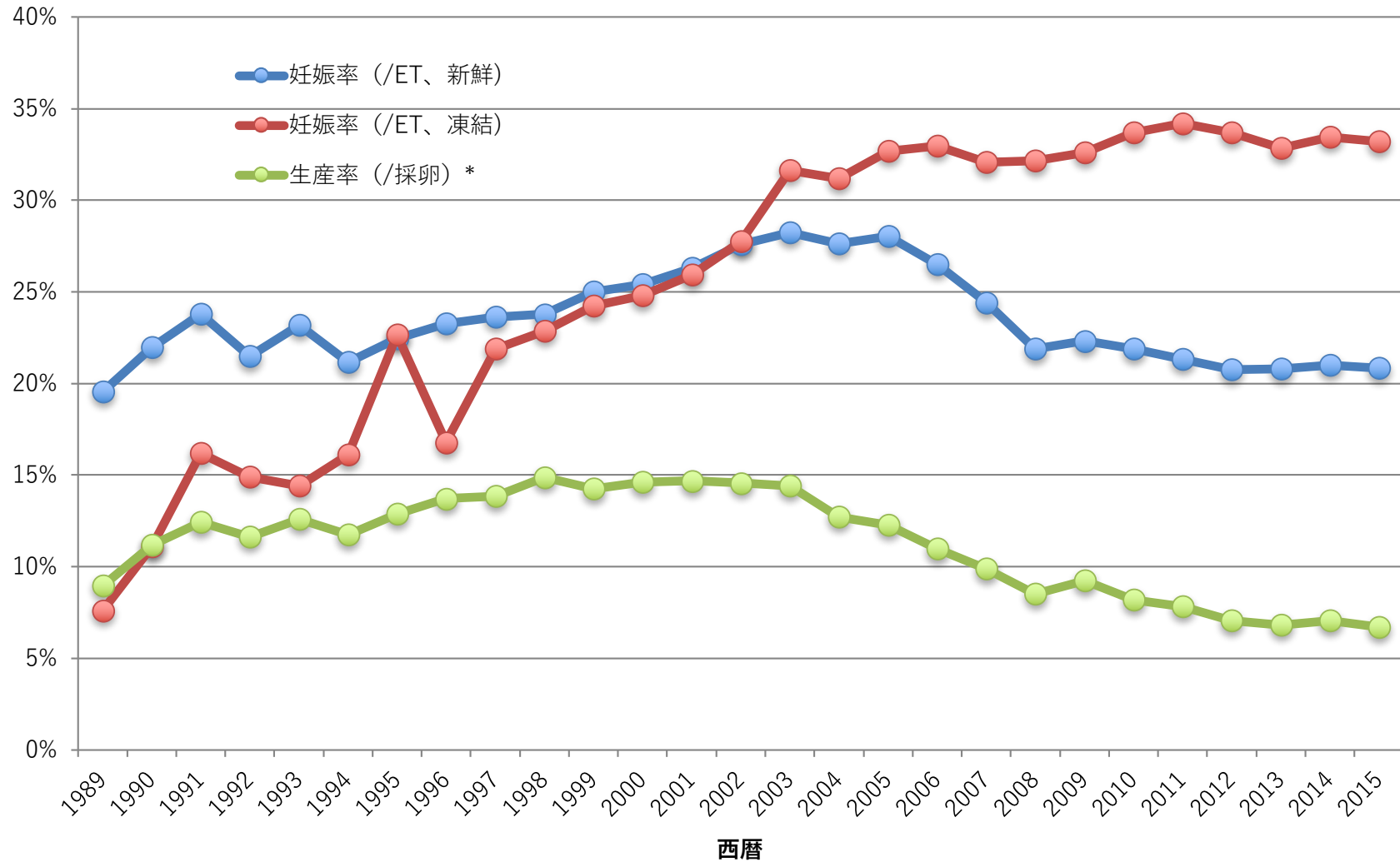
年別 治療周期数



年別 出生児数



年別 妊娠率・生産率

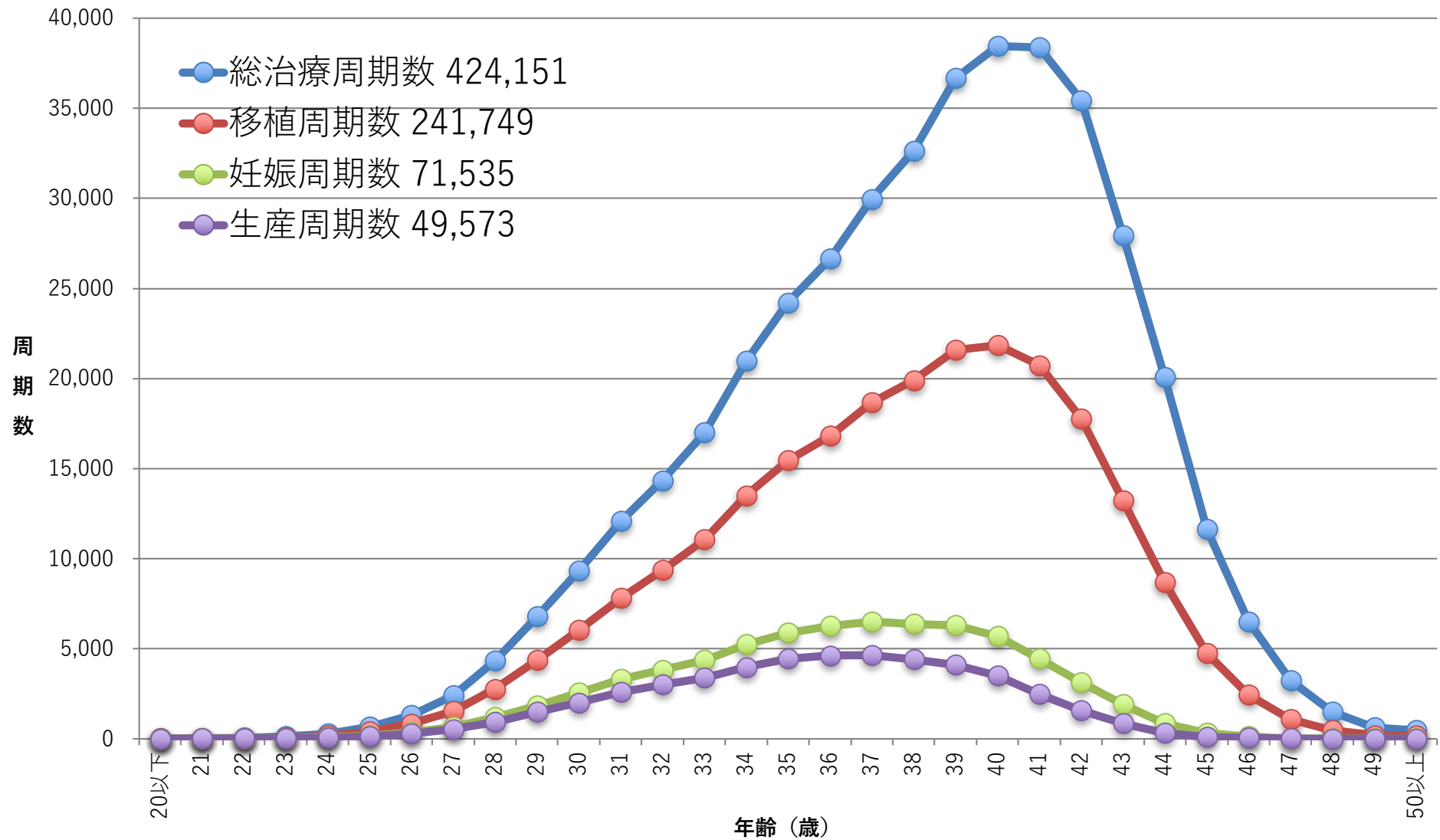


* 2007年以降は全胚凍結周期を除いて表示

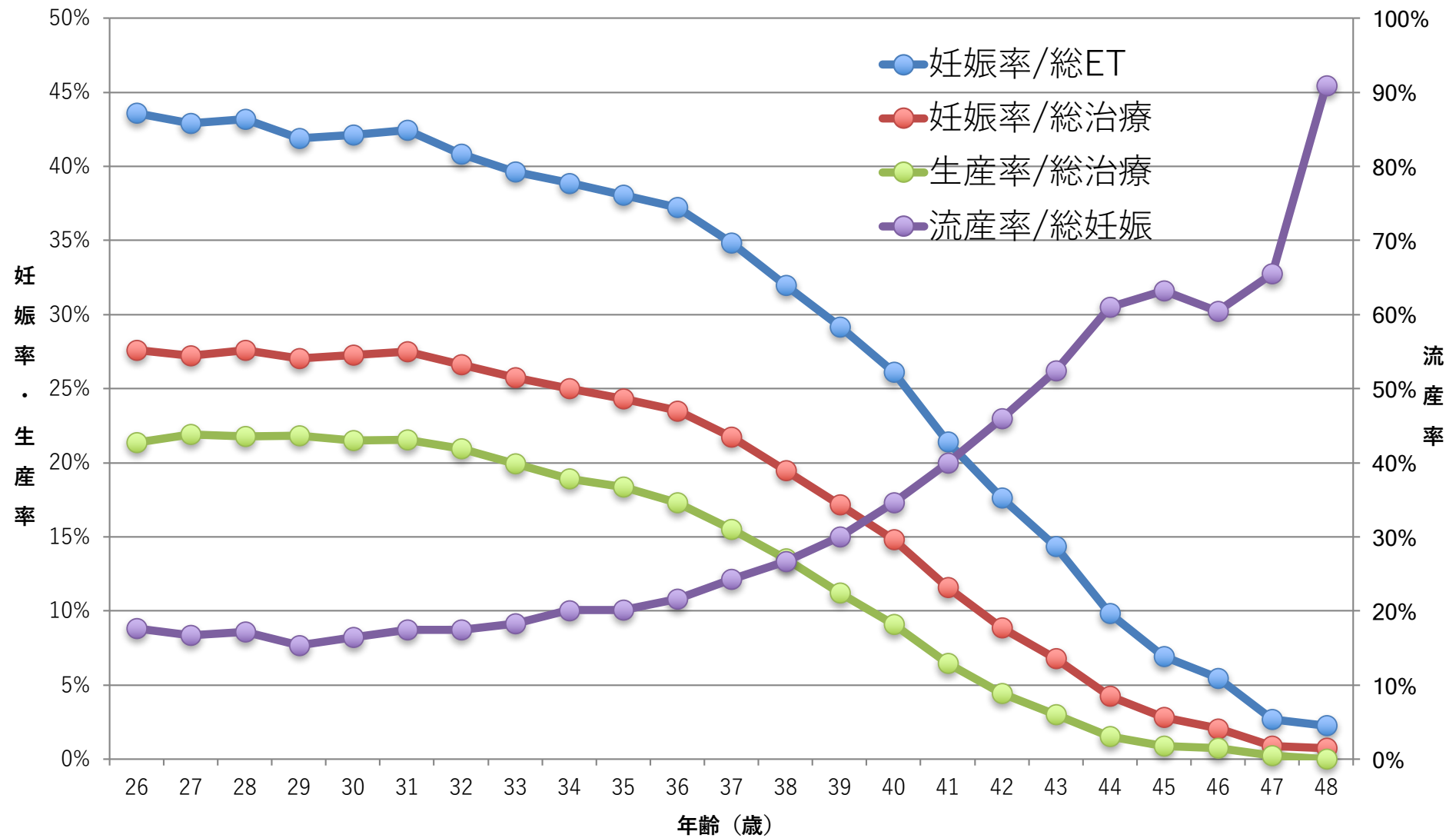
年別 周期数

西暦	IVF (GIFT,その他を含む)						ICSI (SPLITを含む)						凍結融解胚 (卵)			
	治療周期数	採卵周期数	移植周期数	全凍結周期	妊娠周期数	出生児数	治療周期数	採卵周期数	移植周期数	全凍結周期	妊娠周期数	出生児数	治療周期数	移植周期数	妊娠周期数	出生児数
1985	1,195	1,195	862		64	27										
1986	752	752	556		56	16										
1987	1,503	1,503	1,070		135	54										
1988	1,702	1,702	1,665		257	114										
1989	4,218	3,890	2,968		580	446							184	92	7	3
1990	7,405	6,892	5,361		1,178	1,031							160	153	17	17
1991	11,177	10,581	8,473		2,015	1,661							369	352	57	39
1992	17,404	16,381	12,250		2,702	2,525	963	936	524		42	35	553	530	79	66
1993	21,287	20,345	15,565		3,730	3,334	2,608	2,447	1,271		176	149	681	597	86	71
1994	25,157	24,033	18,690		4,069	3,734	5,510	5,339	4,114		759	698	1,303	1,112	179	144
1995	26,648	24,694	18,905		4,246	3,810	9,820	9,054	7,722		1,732	1,579	1,682	1,426	323	298
1996	27,338	26,385	21,492		4,818	4,436	13,438	13,044	11,269		2,799	2,588	2,900	2,676	449	386
1997	32,247	30,733	24,768		5,730	5,060	16,573	16,376	14,275		3,495	3,249	5,208	4,958	1,086	902
1998	34,929	33,670	27,436		6,255	5,851	18,657	18,266	15,505		3,952	3,701	8,132	7,643	1,748	1,567
1999	36,085	34,290	27,455		6,812	5,870	22,984	22,350	18,592		4,702	4,247	9,950	9,093	2,198	1,812
2000	31,334	29,907	24,447		6,328	5,447	26,712	25,794	21,067		5,240	4,582	11,653	10,719	2,660	2,245
2001	32,676	31,051	25,143		6,749	5,829	30,369	29,309	23,058		5,924	4,862	13,034	11,888	3,080	2,467
2002	34,953	33,849	26,854		7,767	6,443	34,824	33,823	25,866		6,775	5,486	15,887	14,759	4,094	3,299
2003	38,575	36,480	28,214		8,336	6,608	38,871	36,663	27,895		7,506	5,994	24,459	19,641	6,205	4,798
2004	41,619	39,656	29,090		8,542	6,709	44,698	43,628	29,946		7,768	5,921	30,287	24,422	7,606	5,538
2005	42,822	40,471	29,337		8,893	6,706	47,579	45,388	30,983		8,019	5,864	35,069	28,743	9,396	6,542
2006	44,778	42,248	29,440		8,509	6,256	52,539	49,854	32,509		7,904	5,401	42,171	35,804	11,798	7,930
2007	53,873	52,165	28,228	7,626	7,416	5,144	61,813	60,294	34,032	11,541	7,784	5,194	45,478	43,589	13,965	9,257
2008	59,148	57,217	29,124	10,139	6,897	4,664	71,350	69,864	34,425	15,390	7,017	4,615	60,115	57,846	18,597	12,425
2009	63,083	60,754	28,559	11,800	6,891	5,046	76,790	75,340	35,167	19,046	7,330	5,180	73,927	71,367	23,216	16,454
2010	67,714	64,966	27,905	13,843	6,556	4,657	90,677	88,822	37,172	24,379	7,699	5,277	83,770	81,300	27,382	19,011
2011	71,422	68,651	27,284	16,202	6,341	4,546	102,473	100,518	38,098	30,773	7,601	5,415	95,764	92,782	31,721	22,465
2012	82,108	79,434	29,693	20,627	6,703	4,740	125,229	122,962	40,829	41,943	7,947	5,498	119,089	116,176	39,106	27,715
2013	89,950	87,104	30,164	25,085	6,817	4,776	134,871	134,871	41,150	49,316	8,027	5,630	141,335	138,249	45,392	32,148
2014	92,269	89,397	30,414	27,624	6,970	5,025	144,247	141,888	41,437	55,851	8,122	5,702	157,229	153,977	51,458	36,595
2015	93,614	91,079	28,858	30,498	6,478	4,629	155,797	153,639	41,396	63,660	8,169	5,761	174,740	171,495	56,888	40,611

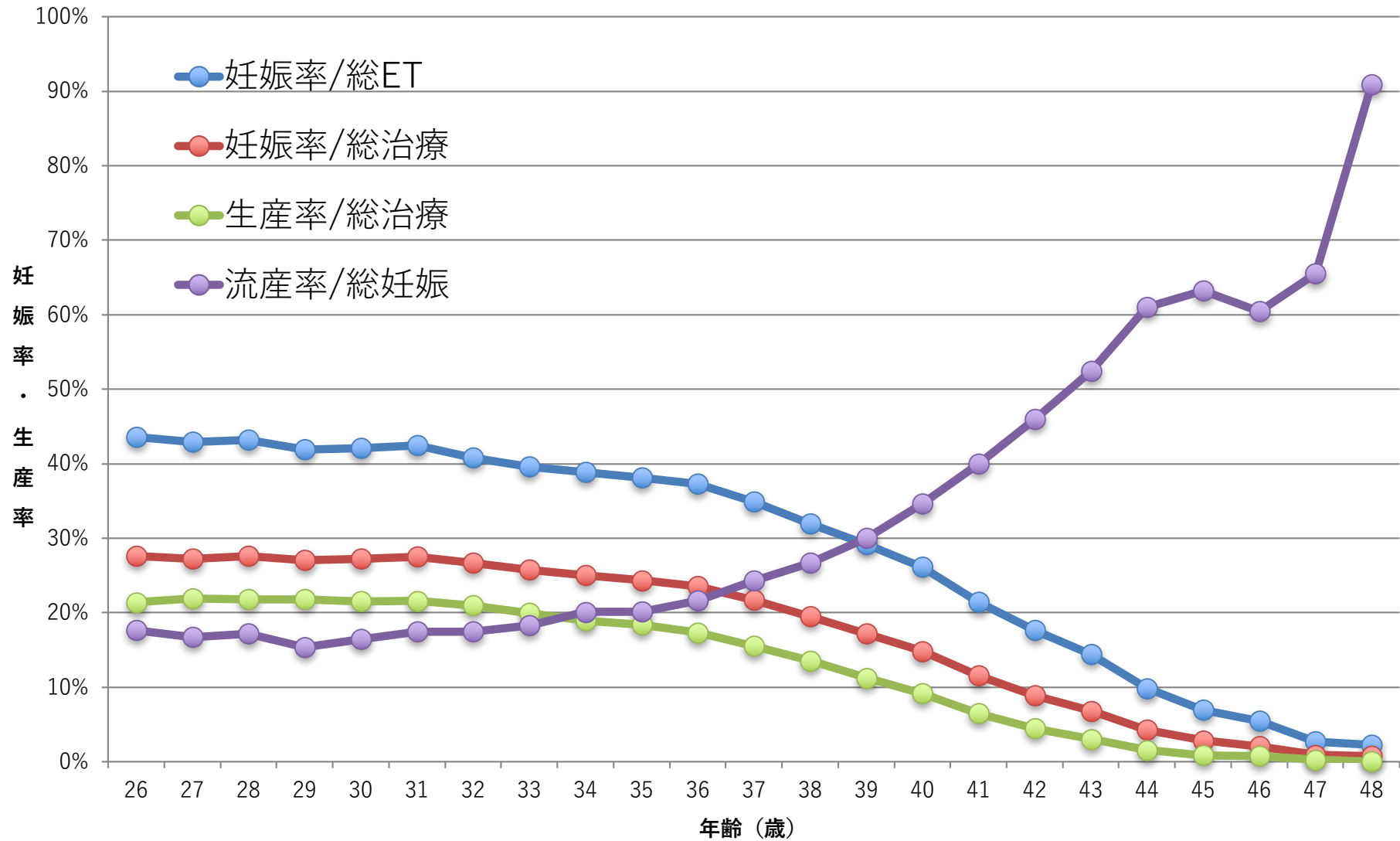
ART治療周期数 2015



ART妊娠率・生産率・流産率 2015



ART妊娠率・生産率・流産率 2015



2015

年齢別	総治療周期数	移植周期数	妊娠周期数	生産周期数	流産数	妊娠率/総ET	妊娠率/総治療	生産率/総治療	流産率/総妊娠
20歳以下	33	6	2	2	0	33.3%	6.1%	6.1%	0.0%
21	31	14	9	9	0	64.3%	29.0%	29.0%	0.0%
22	57	28	12	11	0	42.9%	21.1%	19.3%	0.0%
23	123	71	27	24	2	38.0%	22.0%	19.5%	7.4%
24	300	174	85	61	15	48.9%	28.3%	20.3%	17.6%
25	662	407	182	140	29	44.7%	27.5%	21.1%	15.9%
26	1,315	833	363	281	64	43.6%	27.6%	21.4%	17.6%
27	2,415	1,532	657	529	110	42.9%	27.2%	21.9%	16.7%
28	4,326	2,764	1,193	943	205	43.2%	27.6%	21.8%	17.2%
29	6,787	4,382	1,836	1,481	282	41.9%	27.1%	21.8%	15.4%
30	9,330	6,040	2,544	2,007	419	42.1%	27.3%	21.5%	16.5%
31	12,072	7,815	3,318	2,602	578	42.5%	27.5%	21.6%	17.4%
32	14,338	9,358	3,820	3,001	667	40.8%	26.6%	20.9%	17.5%
33	16,992	11,048	4,378	3,390	800	39.6%	25.8%	20.0%	18.3%
34	20,988	13,505	5,249	3,973	1,054	38.9%	25.0%	18.9%	20.1%
35	24,206	15,465	5,889	4,445	1,186	38.1%	24.3%	18.4%	20.1%
36	26,663	16,828	6,268	4,618	1,356	37.2%	23.5%	17.3%	21.6%
37	29,958	18,667	6,505	4,646	1,577	34.8%	21.7%	15.5%	24.2%
38	32,641	19,895	6,360	4,418	1,699	32.0%	19.5%	13.5%	26.7%
39	36,670	21,566	6,293	4,119	1,886	29.2%	17.2%	11.2%	30.0%
40	38,455	21,847	5,702	3,505	1,972	26.1%	14.8%	9.1%	34.6%
41	38,383	20,726	4,441	2,476	1,773	21.4%	11.6%	6.5%	39.9%
42	35,406	17,772	3,133	1,577	1,439	17.6%	8.8%	4.5%	45.9%
43	27,936	13,213	1,899	843	995	14.4%	6.8%	3.0%	52.4%
44	20,080	8,669	853	308	520	9.8%	4.2%	1.5%	61.0%
45	11,641	4,745	329	103	208	6.9%	2.8%	0.9%	63.2%
46	6,505	2,446	134	48	81	5.5%	2.1%	0.7%	60.4%
47	3,248	1,088	29	8	19	2.7%	0.9%	0.2%	65.5%
48	1,492	488	11	0	10	2.3%	0.7%	0.0%	90.9%
49	627	191	8	2	4	4.2%	1.3%	0.3%	50.0%
50歳以上	471	166	6	3	3	3.6%	1.3%	0.6%	50.0%
合計	424,151	241,749	71,535	49,573	18,953	29.6%	16.9%	11.7%	26.5%