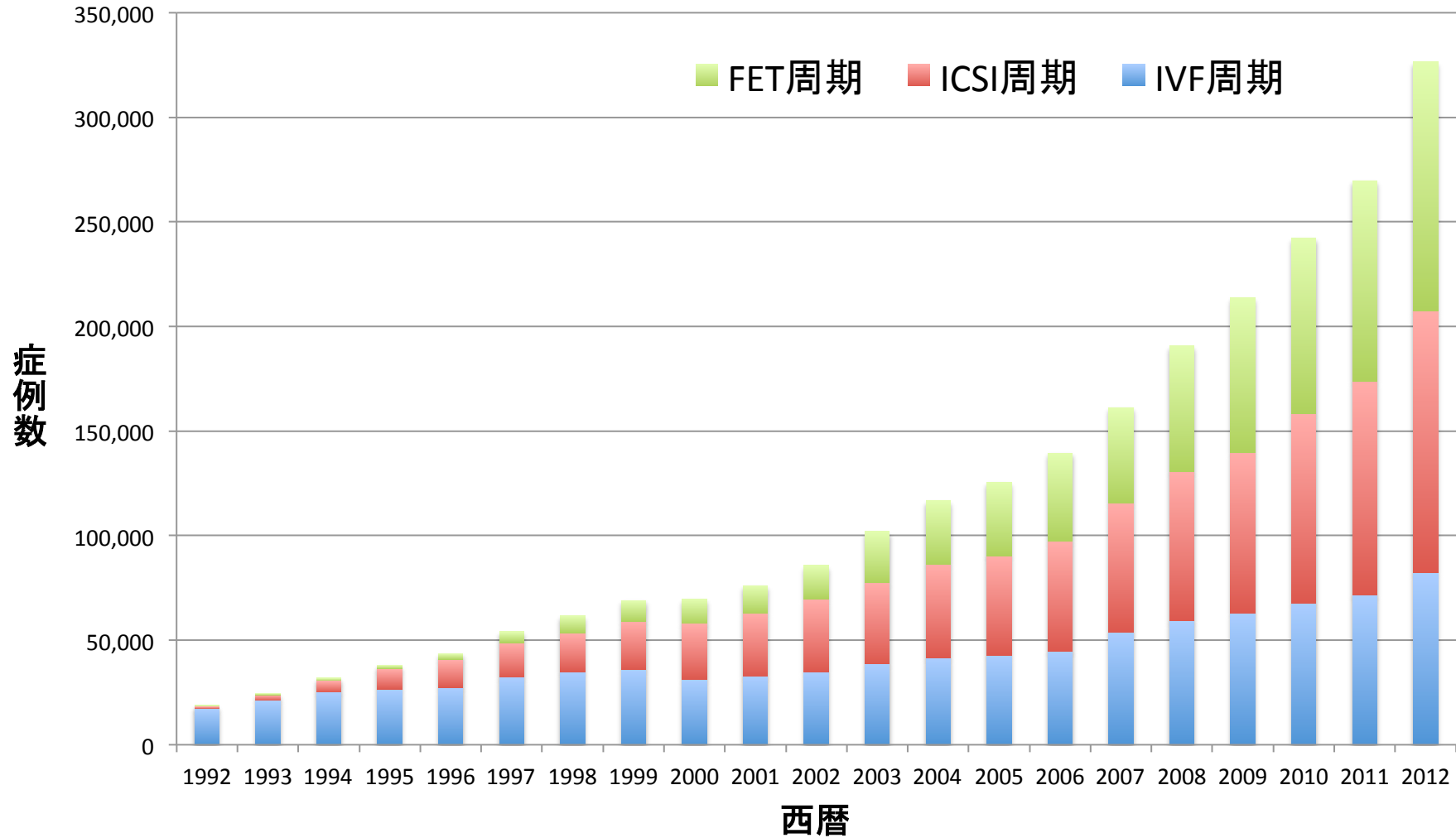
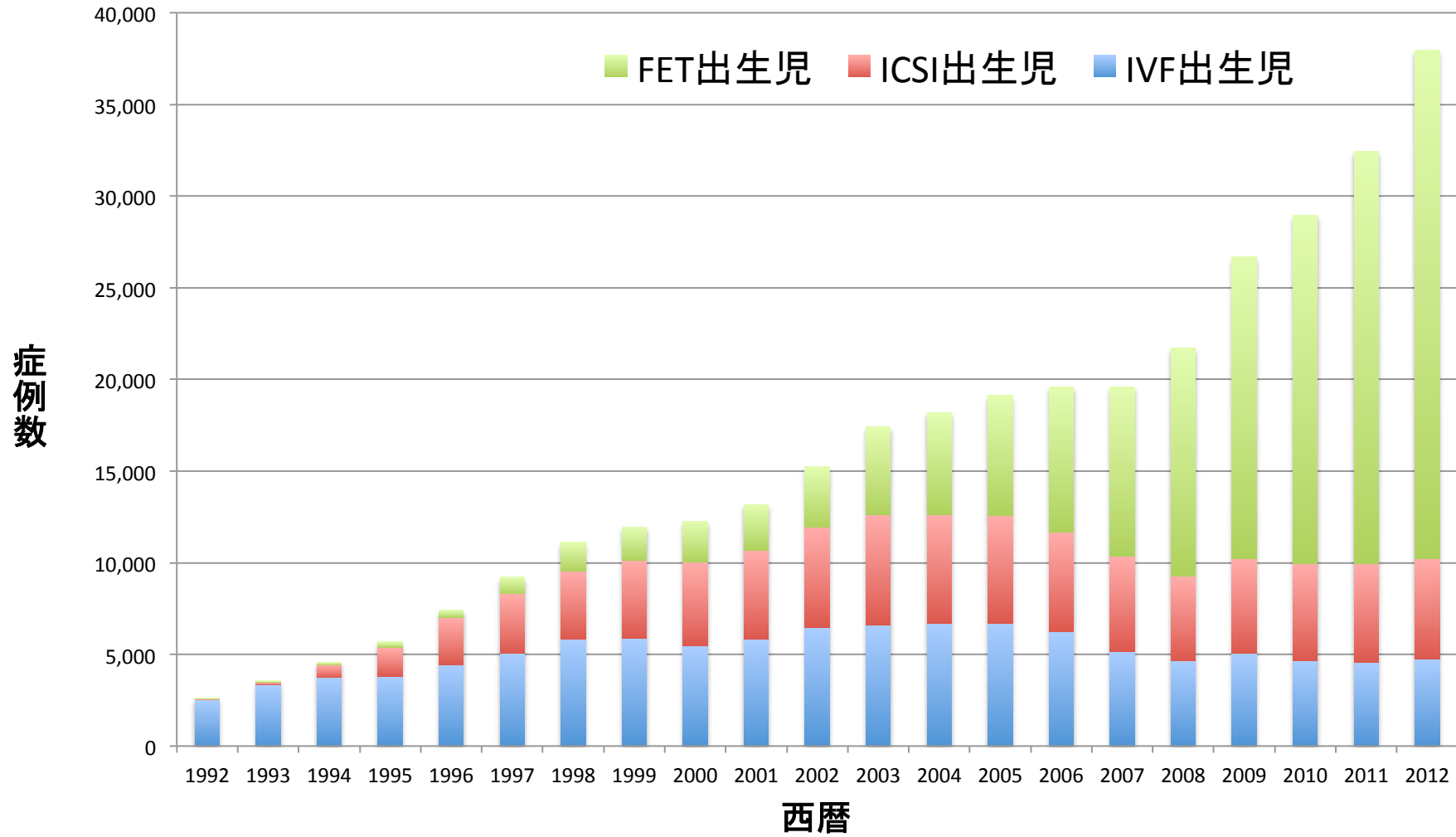


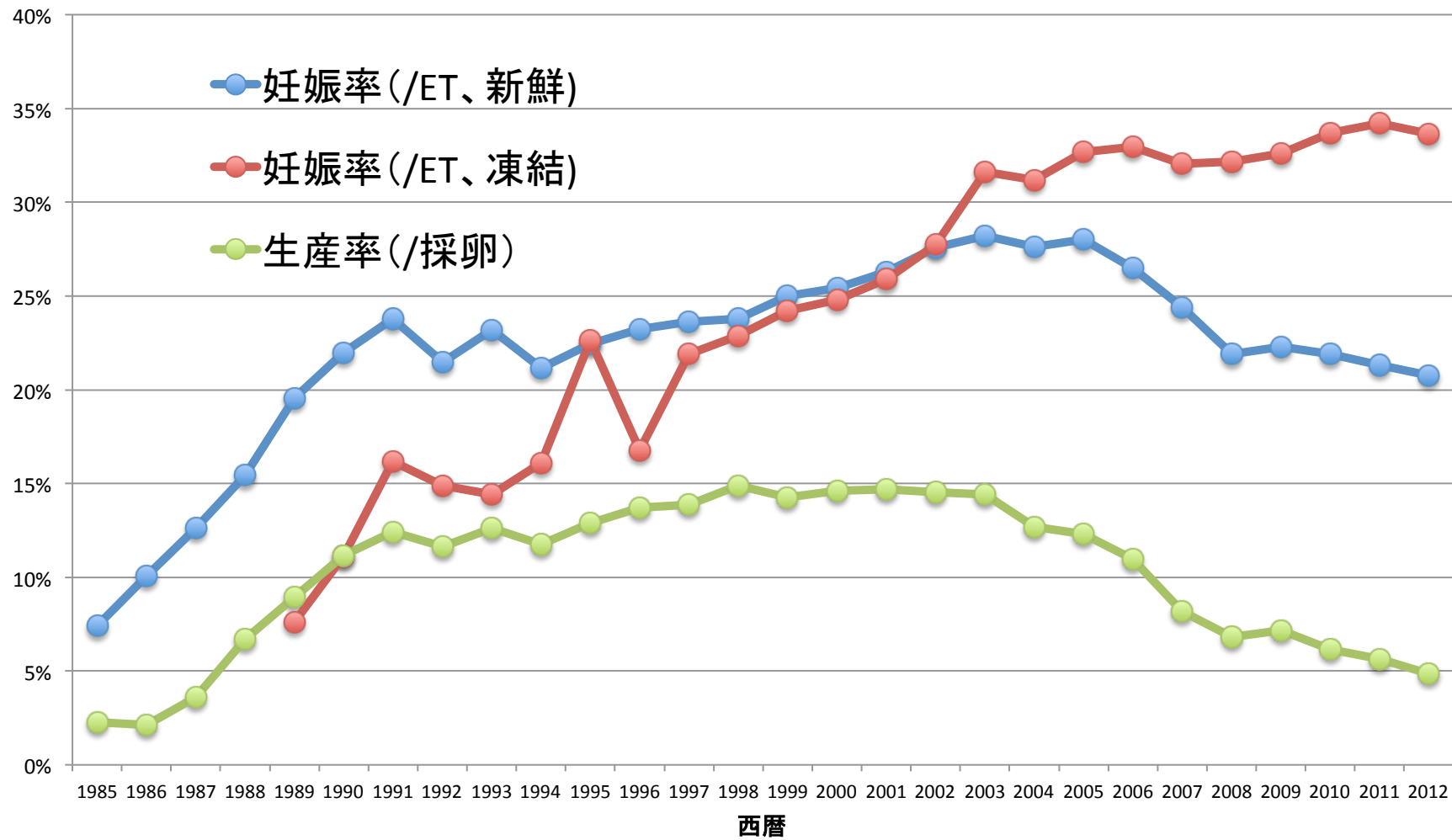
年別 治療周期数



年別 出生児数

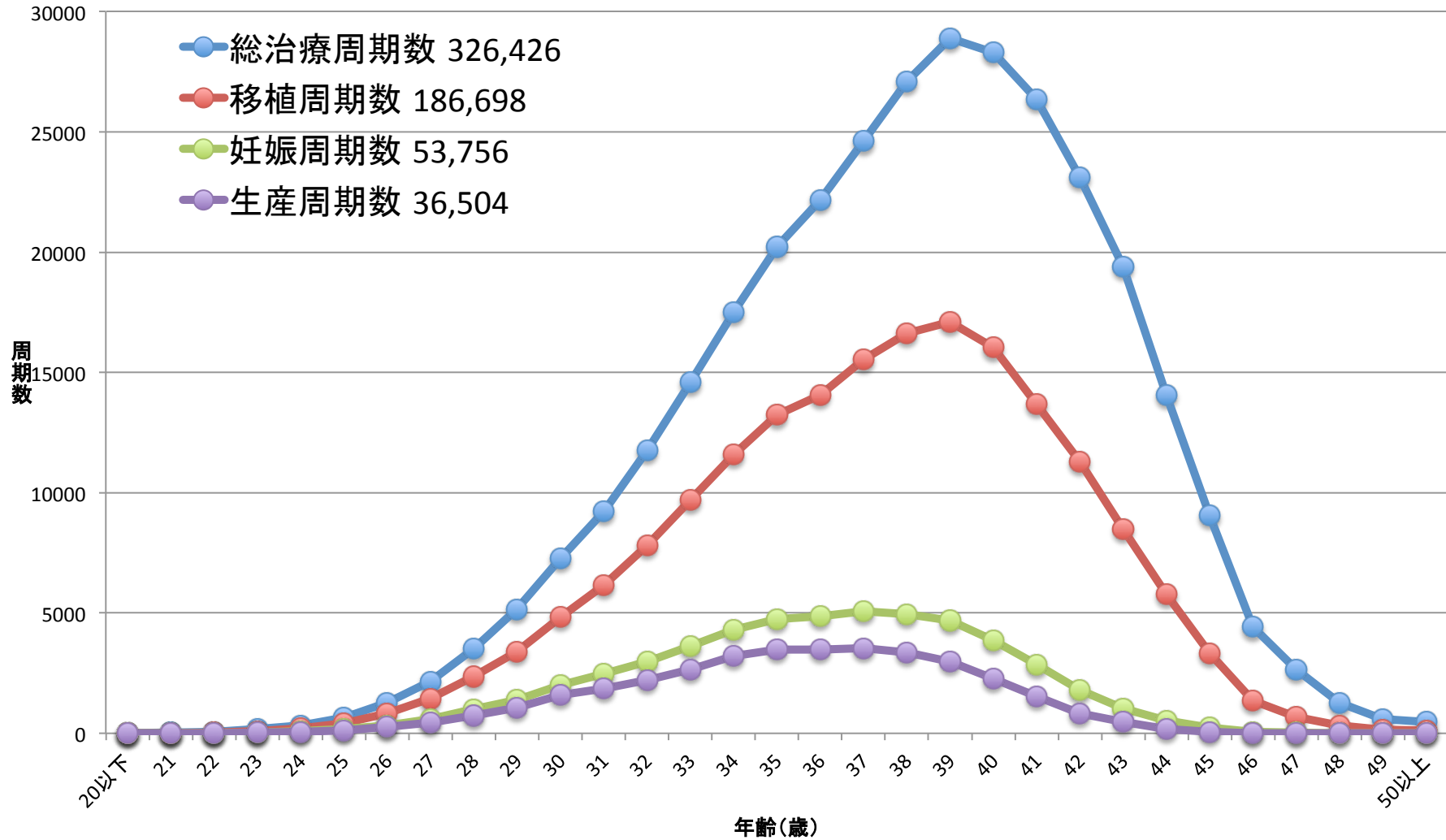


年別 妊娠率・生産率

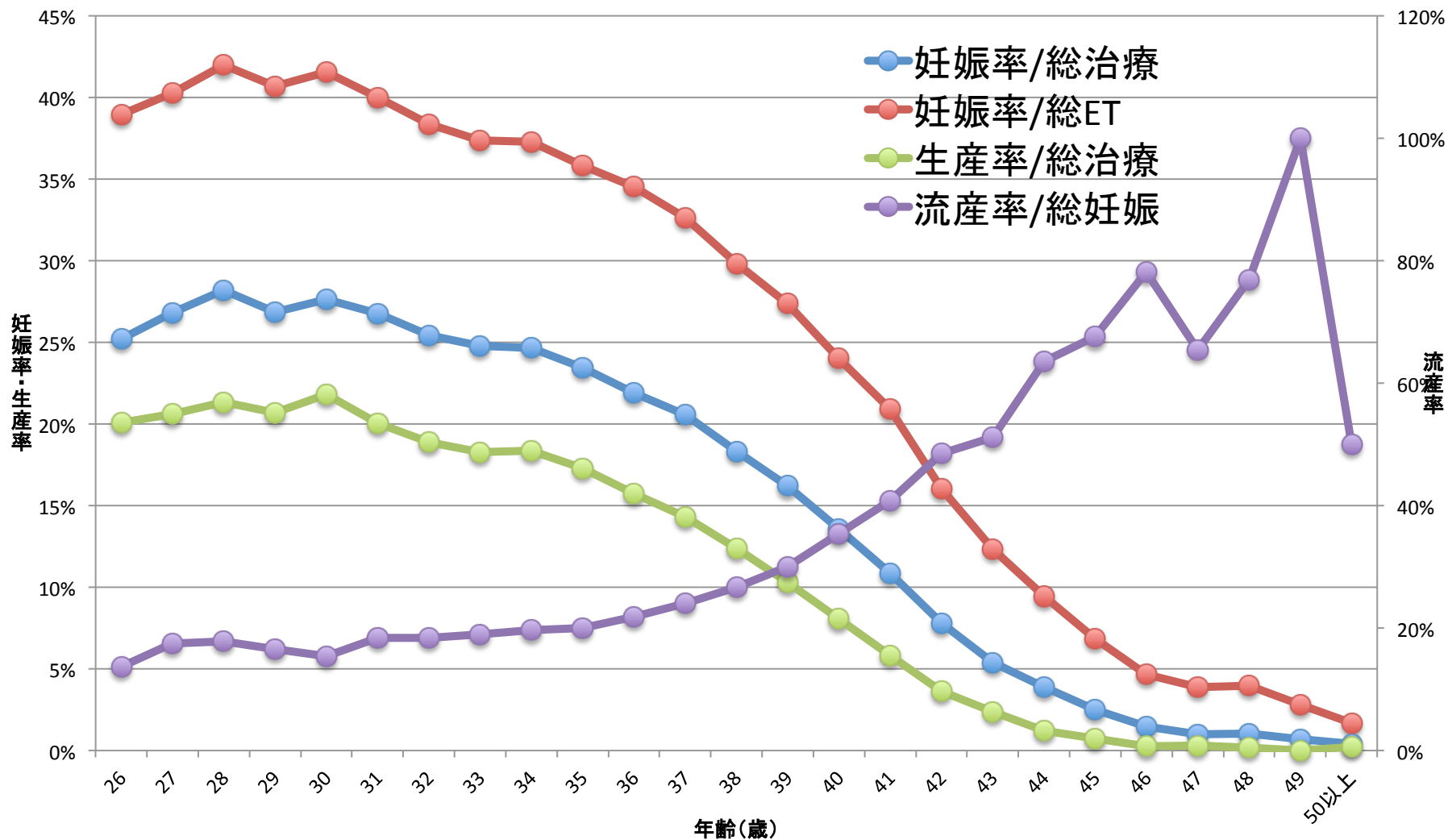


	IVF(GIFT,その他を含む)				ICSI(SPLITを含む)				凍結融解胚(卵)		
	治療周期数	採卵周期数	妊娠周期数	出生児数	治療周期数	採卵周期数	妊娠周期数	出生児数	治療周期数	妊娠周期数	出生児数
1985	1195	1195	64	27							
1986	752	752	56	16							
1987	1503	1503	135	54							
1988	1702	1702	257	114							
1989	4218	3890	580	446					184	7	3
1990	7405	6892	1178	1031					160	17	17
1991	11177	10581	2015	1661					369	57	39
1992	17404	16381	2702	2525	963	936	42	35	553	79	66
1993	21287	20345	3730	3334	2608	2447	176	149	681	86	71
1994	25157	24033	4069	3734	5510	5339	759	698	1,303	179	144
1995	26648	24694	4246	3810	9820	9054	1732	1579	1,682	323	298
1996	27338	26385	4818	4436	13438	13044	2799	2588	2,900	449	386
1997	32247	30733	5730	5060	16573	16376	3495	3249	5,208	1,086	902
1998	34929	33670	6255	5851	18657	18266	3952	3701	8,132	1,748	1,567
1999	36085	34290	6812	5870	22984	22350	4702	4247	9,950	2,198	1,812
2000	31334	29907	6328	5447	26712	25794	5240	4582	11,653	2,660	2,245
2001	32676	31051	6749	5829	30369	29309	5924	4862	13,034	3,080	2,467
2002	34953	33849	7767	6443	34824	33823	6775	5486	15,887	4,094	3,299
2003	38575	36480	8336	6608	38871	36663	7506	5994	24,459	6,205	4,798
2004	41619	39656	8542	6709	44698	43628	7768	5921	30,287	7,606	5,538
2005	42822	40471	8893	6706	47579	45388	8019	5864	35,069	9,396	6,542
2006	44778	42248	8509	6256	52539	49854	7904	5401	42,171	11,798	7,930
2007	53873	52165	7416	5144	61813	60294	7784	5194	45,478	13,965	9,257
2008	59148	57217	6897	4664	71350	69864	7017	4615	60,115	18,597	12,425
2009	63083	60754	6891	5046	76790	75340	7330	5180	73,927	23,216	16,454
2010	67714	64966	6556	4657	90677	88822	7699	5277	83,770	27,382	19,011
2011	71422	68651	6341	4546	102473	100518	7601	5415	95,764	31,721	22,465
2012	82108	79434	6703	4740	125229	122962	7947	5498	119,089	39,106	27,715

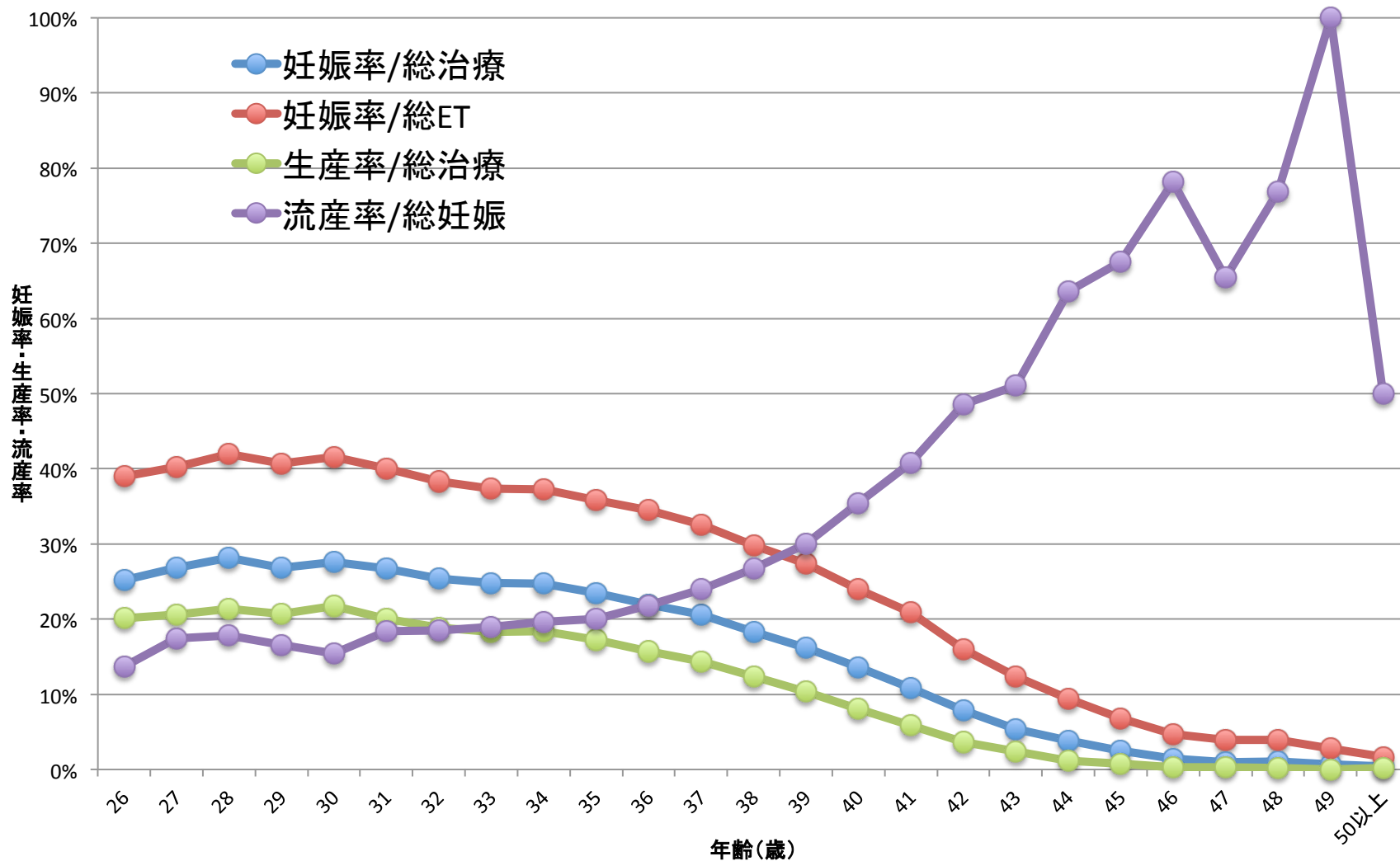
ART治療周期数 2012



ART妊娠率・生産率・流産率 2012

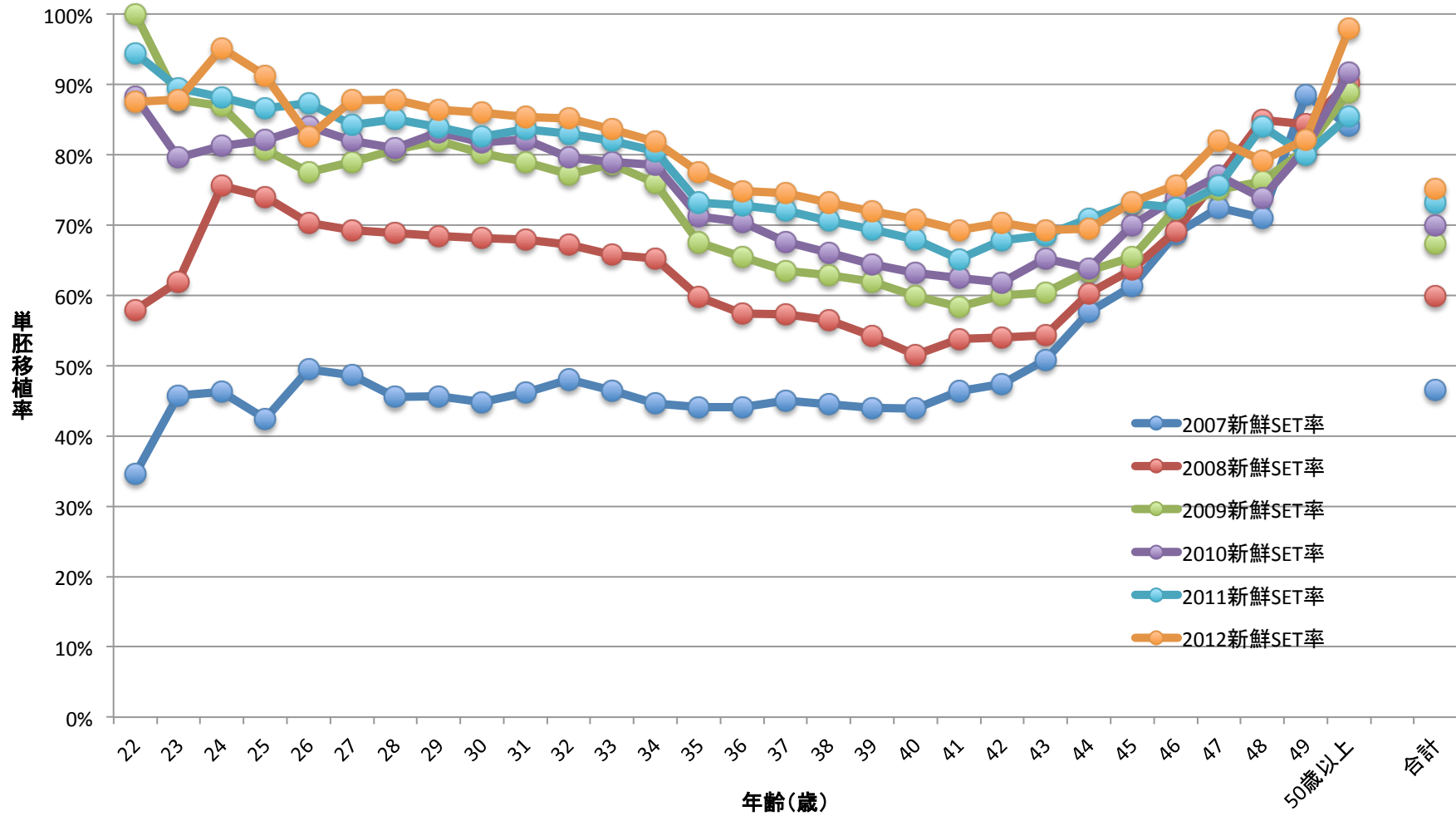


ART妊娠率・生産率・流産率 2012



年齢別	2012年全て									
	総治療周期数	移植周期数	妊娠周期数	生産周期数	流産数	妊娠率/総治療	妊娠率/総ET	生産率/総治療	流産率/総妊娠	
20以下	11	0	0	0	0	0.0%		0.0%		
21	25	9	2	1	0	8.0%	22.2%	4.0%	0.0%	
22	50	27	9	8	1	18.0%	33.3%	16.0%	11.1%	
23	167	102	42	30	7	25.1%	41.2%	18.0%	16.7%	
24	331	203	93	65	19	28.1%	45.8%	19.6%	20.4%	
25	643	403	168	129	23	26.1%	41.7%	20.1%	13.7%	
26	1,274	824	321	256	44	25.2%	39.0%	20.1%	13.7%	
27	2,156	1,436	578	444	101	26.8%	40.3%	20.6%	17.5%	
28	3,520	2,362	992	751	177	28.2%	42.0%	21.3%	17.8%	
29	5,161	3,406	1,385	1,067	229	26.8%	40.7%	20.7%	16.5%	
30	7,293	4,850	2,014	1,589	310	27.6%	41.5%	21.8%	15.4%	
31	9,229	6,172	2,469	1,849	455	26.8%	40.0%	20.0%	18.4%	
32	11,766	7,802	2,992	2,223	552	25.4%	38.3%	18.9%	18.4%	
33	14,603	9,693	3,620	2,666	688	24.8%	37.3%	18.3%	19.0%	
34	17,509	11,585	4,319	3,218	849	24.7%	37.3%	18.4%	19.7%	
35	20,228	13,242	4,741	3,492	949	23.4%	35.8%	17.3%	20.0%	
36	22,157	14,074	4,856	3,485	1,061	21.9%	34.5%	15.7%	21.8%	
37	24,625	15,533	5,066	3,528	1,215	20.6%	32.6%	14.3%	24.0%	
38	27,101	16,636	4,962	3,351	1,325	18.3%	29.8%	12.4%	26.7%	
39	28,897	17,094	4,680	2,980	1,402	16.2%	27.4%	10.3%	30.0%	
40	28,316	16,045	3,850	2,281	1,363	13.6%	24.0%	8.1%	35.4%	
41	26,351	13,693	2,861	1,536	1,168	10.9%	20.9%	5.8%	40.8%	
42	23,120	11,290	1,808	838	878	7.8%	16.0%	3.6%	48.6%	
43	19,389	8,487	1,047	460	535	5.4%	12.3%	2.4%	51.1%	
44	14,051	5,770	544	168	346	3.9%	9.4%	1.2%	63.6%	
45	9,045	3,329	228	66	154	2.5%	6.8%	0.7%	67.5%	
46	4,410	1,373	64	12	50	1.5%	4.7%	0.3%	78.1%	
47	2,643	667	26	8	17	1.0%	3.9%	0.3%	65.4%	
48	1,276	329	13	2	10	1.0%	4.0%	0.2%	76.9%	
49	594	143	4	0	4	0.7%	2.8%	0.0%	100.0%	
50以上	485	119	2	1	1	0.4%	1.7%	0.2%	50.0%	
合計	326,426	186,698	53,756	36,504	13,933	16.5%	28.8%	11.2%	25.9%	

SET実施率 6年間の比較(新鮮胚移植)



SET実施率 6年間の比較(凍結胚移植)

