

## 報 告

## 婦人科腫瘍委員会

## 第53回治療年報

2005年に治療した子宮頸癌，子宮体癌，卵巣悪性・境界悪性腫瘍の5年治療成績について

婦人科腫瘍委員会の第53回治療年報(2005年治療開始例)の報告をいたします。

なお，第49回治療年報より，従来の直接法最小生存率\*による方法からKaplan-Meier法に変更しました。追跡不能症例(Lost to follow-up)が多いと治療成績の信頼性が低下するため，予後追跡報告で追跡不能症例が20%を超える施設のデータは治療成績の解析には用いないこととしています。予後解析に使用された施設は，施設名の左に○がつけてあります。

加盟機関の先生方のご苦勞に感謝申し上げます，また婦人科腫瘍委員会の全委員に御礼申し上げます。今後とも何卒よろしくお願ひ申し上げます。

婦人科腫瘍委員会  
委員長 青木 陽一

## 子宮頸癌治療成績

Table A	5年後の治療転帰
Table 1~8	項目別成績
Figure 1~10	予後5年生存率

## 子宮体癌治療成績

Table A	5年後の治療転帰
Table 1~8	項目別成績
Figure 1~10	予後5年生存率

## 卵巣悪性腫瘍治療成績

Table A	5年後の治療転帰
Table 1~6	項目別成績
Figure 1~9	予後5年生存率

## 卵巣境界悪性腫瘍治療成績

Table A	5年後の治療転帰
Table 1~6	項目別成績

\*最小生存率：直接法とは観察開始時点から一定の年限を経過した症例について生存者数を観察対象者数で割った値である。この場合，消息不明例の取扱いによって3種類の生存率が計算される。すなわち，消息不明例をすべて死亡とみなして計算する最小生存率，すべて生存とみなして計算する最大生存率，消息不明例を対象から除外して計算する推定(概算)生存率の3種類である。

(日本癌治療学会・癌規約総論，金原出版，1991より抜粋)

本報告に関するお問い合わせは婦人科腫瘍委員会宛にお願ひ致します。

## 子宮頸癌治療成績

## Statement for the Year 2005, Inclusive, Cervix

Table A. 5-Year Results, Stage I-IV

	A	B	C	D	E	F	G	H	I	J	K
	Institution	Total No. Treated	no description	Alive with no Evidence of the Disease	Alive with Carcinoma	Alive with or without Carcinoma Unknown	Died of Carcinoma	Died of Other Malignant Tumor	Died of Intercurrent Disease	Cause of Death Unknown	Lost to follow-up
○	010003 HOKKAIDO CANCER CENTER	31	0	28	0	0	3	0	0	0	0
	010022 JR SAPPORO HOSP.	5	5	0	0	0	0	0	0	0	0
	010025 SAPPORO MED. UNIV.	54	0	35	0	0	5	0	0	0	14
○	010027 HOKKAIDO UNIV.	25	0	21	0	0	4	0	0	0	0
○	010028 KKR SAPPORO MED. CENTER	3	0	2	0	0	1	0	0	0	0
○	010040 ASAHIKAWA MED. COLL.	10	0	4	0	0	3	0	0	1	2
	010045 KUSHIRO ROSAI HOSP.	7	7	0	0	0	0	0	0	0	0
○	020012 HIROSAKI UNIV.	15	0	6	1	0	5	0	1	0	2
○	020017 MISAWA CITY HOSP.	4	0	1	0	0	3	0	0	0	0
○	040004 TOHOKU UNIV.	42	0	25	1	0	11	1	2	0	2
	040013 SENDAI MED. CENTER	18	0	7	0	0	6	0	1	0	4
○	050001 AKITA RED CROSS HOSP.	3	0	1	0	1	1	0	0	0	0
	050003 AKITA UNIV.	16	1	8	0	0	1	0	0	0	6
○	060002 YAMAGATA PREF. CENTRAL HOSP.	14	0	11	0	1	1	1	0	0	0
○	060005 YAMAGATA UNIV.	26	3	15	0	1	4	0	1	0	2
○	070003 FUKUSHIMA MED. UNIV.	22	0	10	3	0	4	0	1	0	4
○	080001 TSUCHIURA KYODO GENERAL HOSP.	9	0	7	0	0	2	0	0	0	0
	080003 KASUMIGAURA MED. CENTER	11	11	0	0	0	0	0	0	0	0
○	080006 TSUKUBA GAKUEN HOSP.	1	0	0	1	0	0	0	0	0	0
○	080007 TSUKUBA UNIV.	60	0	40	2	0	12	0	0	0	6
	080017 MITO MED. CENTER	14	14	0	0	0	0	0	0	0	0
	080021 HITACHI GENERAL HOSP.	11	5	0	0	0	5	0	0	0	1
○	080031 TSUKUBA MED. CENTER	4	0	3	0	0	0	1	0	0	0
○	090004 DOKKYO MED. UNIV.	13	0	10	1	0	1	0	0	0	1
○	090005 SAISEIKAI UTSUNOMIYA HOSP.	14	0	11	0	0	2	0	0	1	0
○	090011 ASHIKAGA RED CROSS HOSP.	20	0	10	3	0	6	0	0	0	1
	090015 JICHI MED. UNIV.	37	3	20	0	0	7	1	0	0	6
○	090016 TOCHIGI CANCER CENTER	32	0	18	0	1	9	0	0	0	4
○	100012 GUNMA UNIV.	27	0	23	0	0	4	0	0	0	0
	100022 GUNMA PREF. CANCER CENTER	56	0	19	0	0	8	0	0	0	29
○	110008 SAITAMA SHAKAI HOKEN HOSP.	9	0	5	0	0	3	0	1	0	0
○	110014 KOSHIGAYA MUNL HOSP.	16	0	8	0	0	6	0	0	1	1
	110022 SAITAMA MED. CENTER	43	43	0	0	0	0	0	0	0	0
○	110023 SAITAMA NATIONAL HOSP.	14	0	8	0	0	4	0	0	0	2
○	110027 NATIONAL DEFENSE MED. COLL.	20	0	16	2	0	2	0	0	0	0
○	110030 SAITAMA CANCER CENTER	74	0	42	2	2	27	1	0	0	0
○	120005 CHIBA UNIV.	41	0	26	0	0	11	0	1	0	3
	120012 MATSUDO CITY HOSP.	21	0	9	2	0	2	0	0	0	8
○	120015 TOKYO DENTAL COLL. ICHIKAEA GENERAL HOSP.	11	0	10	0	0	1	0	0	0	0
	120021 JIKEI UNIV. KASHIWA HOSP.	50	50	0	0	0	0	0	0	0	0
○	120023 JUNTENDO UNIV. URAYASU HOSP.	34	0	19	1	0	10	0	1	0	3
○	120029 ASAHI CENTRAL HOSP.	22	0	14	0	0	5	0	0	0	3
	120035 KAMEDA MED. CENTER	14	0	8	1	1	1	0	0	0	3
○	120042 CHIBA CANCER CENTER	52	0	31	5	2	11	1	0	0	2
○	120043 NATIONAL INS. OF RADIOLOGICAL SCIENCES	51	0	23	1	0	27	0	0	0	0
	130005 MITUI MEMORIAL HOSP.	7	0	4	0	0	1	0	0	0	2
○	130009 NATIONAL CANCER CENTER	90	0	68	5	1	13	0	0	0	3
	130024 TOKYO MED. DENT. UNIV.	14	14	0	0	0	0	0	0	0	0
	130025 NIPPON MED. SCH.	19	4	14	0	1	0	0	0	0	0
○	130026 TOKYO UNIV.	18	0	9	2	0	4	0	0	0	3
	130029 TOKYO WOMENS MED. UNIV. MED. CENTER EAST	4	0	2	0	0	1	0	0	0	1
	130034 JIKEI UNIV. KATSUSHIKA MED. CENTER	24	24	0	0	0	0	0	0	0	0
○	130046 SHOWA UNIV.	27	4	15	1	1	6	0	0	0	0
○	130050 TOHO UNIV. OMORI HOSP.	11	0	9	0	1	1	0	0	0	0

	A	B	C	D	E	F	G	H	I	J	K
	Institution	Total No. Treated	no description	Alive with no Evidence of the Disease	Alive with Carcinoma	Alive with or without Carcinoma Unknown	Died of Carcinoma	Died of Other Malignant Tumor	Died of Intercurrent Disease	Cause of Death Unknown	Lost to follow-up
○	130055 RED CROSS MED. CENTER	11	1	6	0	0	4	0	0	0	0
	130061 TOKYO MED. CENTER	18	0	11	0	0	2	0	0	0	5
○	130063 KOSEI CENTRAL HOSP.	6	0	4	0	0	1	0	0	0	1
○	130077 KEIO UNIV.	81	0	58	1	1	9	1	0	0	11
	130080 NATIONAL CENTER FOR GLOBAL HEALTH AND MED.	6	6	0	0	0	0	0	0	0	0
	130081 TOKYO WOMENS MED. UNIV.	14	14	0	0	0	0	0	0	0	0
	130085 KOSEI HOSP.	3	0	1	0	0	1	0	0	0	1
	130092 TEIKYO UNIV.	22	0	10	2	0	4	0	0	0	6
	130095 NIHON UNIV.	31	0	14	3	0	6	0	1	0	7
	130099 MUSASHINO RED CROSS HOSP.	22	6	6	0	0	4	0	1	0	5
	130112 MACHIDA MUNI. HOSP.	5	0	3	0	0	0	0	0	0	2
○	130116 JIKEI UNIV. 3RD HOSP.	18	0	13	5	0	0	0	0	0	0
	130119 NIPPON MED. SCH. TAMA NAGAYAMA HOSP.	4	0	1	0	0	2	0	0	0	1
○	130122 TOKYO METRO. KOMAGOME HOSP.	41	1	19	2	0	12	1	0	0	6
○	130124 KYOUNDO HOSP.	8	0	5	1	1	0	0	0	0	1
○	130125 CANCER INST. HOSP.	89	0	55	3	0	11	0	0	4	16
	130135 TAMA-NAMBU CHIKI HOSP.	12	12	0	0	0	0	0	0	0	0
	140001 KAWASAKI MUNI. HOSP.	1	0	0	0	0	0	0	0	0	1
	140006 NIPPON MED. SCH. MUSASHI KOSUGI HOSP.	5	0	1	0	0	0	0	0	0	4
○	140008 KANTO ROSAI HOSP.	2	0	2	0	0	0	0	0	0	0
	140012 ST. MARIANNA UNIV.	42	24	0	0	0	2	0	0	0	16
○	140016 YOKOHAMA ROSAI HOSP.	13	0	9	0	0	3	0	0	0	1
	140017 SHOWA UNIV. FUJIGAOKA HOSP.	14	0	5	1	0	5	0	0	0	3
○	140020 KITAZATO UNIV.	61	0	45	0	0	6	0	0	0	10
○	140029 YOKOHAMA CITY UNIV.	29	0	10	0	0	14	0	0	1	4
○	140030 YOKOHAMA MINAMI KYOSAI HOSP.	4	0	2	0	0	2	0	0	0	0
○	140035 YOKOHAMA MUNI. HOSP.	6	0	6	0	0	0	0	0	0	0
	140038 YAMATO MUNI. HOSP.	3	3	0	0	0	0	0	0	0	0
	140039 ATSUGI CITY HOSP.	1	1	0	0	0	0	0	0	0	0
○	140054 ISEHARA KYODO HO S. P.	7	0	6	1	0	0	0	0	0	0
○	140055 TOKAI UNIV.	14	0	8	0	0	3	1	0	0	2
○	140059 KANAGAWA CANCER CENTER	98	0	72	2	0	22	1	0	0	1
	140061 YOKOHAMA CITY UNIV. MED. CENTER	7	0	2	0	0	4	0	0	0	1
○	150002 YAMANASHI PREF. CENTRAL HOSP.	26	0	21	0	0	5	0	0	0	0
○	150006 UNIV. OF YAMANASHI	29	0	17	2	0	4	1	2	0	3
	160001 NAGANO RED CROSS HOSP.	53	0	28	4	0	8	0	0	0	13
	160006 SHINSHU UNIV.	18	6	7	0	0	5	0	0	0	0
	160014 MATSUMOTO MED. CENTER MATSUMOTO HOSP.	2	2	0	0	0	0	0	0	0	0
	170006 FUJI CITY GENERAL HOSP.	3	0	2	0	0	0	0	0	0	1
○	170009 SHIZUOKA GENERAL HOSP.	37	0	24	4	0	4	0	0	0	5
	170025 HAMAMATSU UNIV. SCH. OF MED.	1	1	0	0	0	0	0	0	0	0
○	180001 NAGAOKA RED CROSS HOSP.	10	0	5	0	1	4	0	0	0	0
○	180009 NIIGATA UNIV.	86	0	74	1	0	10	0	1	0	0
○	180010 NIIGATA CANCER CENTER HOSP.	42	1	25	0	1	13	0	1	0	1
○	190001 TOYAMA UNIV.	8	0	6	1	0	0	0	0	0	1
○	190002 TOYAMA RED CROSS HOSP.	5	0	5	0	0	0	0	0	0	0
○	190003 TOYAMA PREF. CENTRAL HOSP.	18	0	14	1	2	0	0	1	0	0
○	200001 KANAZAWA MED. UNIV.	8	0	6	0	0	1	0	0	0	1
○	200002 KANAZAWA MED. CENTER	10	0	8	1	0	1	0	0	0	0
	200004 KANAZAWA UNIV.	23	0	14	0	0	3	0	0	0	6
	210003 FUKUI UNIV.	10	10	0	0	0	0	0	0	0	0
○	210004 FUKUI RED CROSS HOSP.	7	0	2	0	0	5	0	0	0	0
○	220002 GIFU UNIV.	34	0	28	0	0	4	0	0	0	2
○	230014 RED CROSS NAGOYA DAIICHI HOSP.	21	0	17	1	0	3	0	0	0	0
	230024 NAGOYA MED. CENTER	21	21	0	0	0	0	0	0	0	0
○	230031 NAGOYA UNIV.	45	0	33	0	0	5	0	0	0	7
○	230034 NAGOYA CITY UNIV.	30	0	23	3	0	4	0	0	0	0
○	230035 FUJITA HEALTH UMIN.	32	0	21	2	1	4	0	0	0	4
	230040 AICHI MED. UNIV.	17	0	10	0	0	1	0	0	0	6
○	230052 AICHI CANCER CENTER	79	0	62	3	0	12	1	1	0	0

	A	B	C	D	E	F	G	H	I	J	K
	Institution	Total No. Treated	no description	Alive with no Evidence of the Disease	Alive with Carcinoma	Alive with or without Carcinoma Unknown	Died of Carcinoma	Died of Other Malignant Tumor	Died of Intercurrent Disease	Cause of Death Unknown	Lost to follow-up
○	240002	MIE PREF. GENERAL MED. CENTER	15	1	7	1	0	6	0	0	0
○	240003	YOKKAICHI MUNI. HOSP.	7	0	6	0	0	0	0	0	1
○	240015	ISE RED CROSS HOSP.	18	0	11	0	0	6	0	0	1
○	250001	OHTSU RED CROSS HOSP.	9	0	4	0	0	2	0	1	2
○	260002	KYOTO 2ND RED CROSS HOSP.	20	0	15	2	0	2	0	0	1
○	260003	KYOTO PREF. UNIV. OF MED.	17	0	7	2	0	1	0	0	7
○	260007	KYOTO 1ST RED CROSS HOSP.	28	21	0	0	0	0	0	0	7
○	260009	KYOTO UNIV.	47	1	32	2	1	8	0	3	0
○	260017	SAISEIKAI KYOTO HOSP.	12	6	1	2	0	1	0	0	2
○	270003	KITANO HOSP.	18	0	12	0	0	3	0	0	3
○	270007	OSAKA CITY GENERAL HOSP.	45	45	0	0	0	0	0	0	0
○	270009	OSAKA NATIONAL HOSP.	53	0	29	0	0	8	1	1	13
○	270013	OSAKA POLICE HOSP.	7	0	6	0	0	0	0	0	1
○	270016	OSAKA CITY UNIV.	62	0	30	0	0	11	0	0	21
○	270035	OSAKA UNIV.	53	2	25	13	0	6	0	0	7
○	270041	OSAKA MED. COLL.	60	0	34	0	2	5	0	1	18
○	270042	KANSAI MED. UNIV.	23	0	11	1	0	0	0	0	11
○	270056	KINKI UNIV.	36	0	31	0	0	1	0	0	4
○	270062	OSAKA ROUSAI HOSP.	51	0	27	0	1	6	1	0	16
○	270101	OSAKA MED. CENTER FOR CANCER AND CVD	57	0	38	1	0	12	0	1	5
○	280001	KOBE UNIV.	18	11	0	0	0	3	0	0	4
○	280010	KOBE MED. CENTER	4	1	0	2	0	0	0	0	1
○	280015	KANSAI ROSAI HOSP.	21	0	15	2	0	4	0	0	0
○	280021	HYOGO MED. COLL.	43	43	0	0	0	0	0	0	0
○	280028	TOYOOKA PUBLIC HOSP.	8	0	5	0	0	2	0	0	1
○	280030	HIMEJI RED CROSS HOSP.	19	0	13	0	0	2	0	0	4
○	280031	HIMEJI MED. CENTER	17	17	0	0	0	0	0	0	0
○	280033	HYOGO CANCER CENTER	104	0	70	5	3	20	2	2	1
○	290003	NARA PREF. NARA HOSP.	15	13	0	0	0	2	0	0	0
○	290004	TENRI HOSP.	34	0	17	3	1	3	0	0	10
○	290007	NARA MED. UNIV.	25	0	6	3	0	8	0	0	8
○	290009	MIMURO HOSP.	1	1	0	0	0	0	0	0	0
○	300002	JAPAN RED CROSS WAKAYAMA MED. CENTER	13	0	10	0	0	1	0	0	2
○	300003	WAKAYAMA MED. UNIV.	22	1	18	2	0	1	0	0	0
○	310001	TOTTORI PREF. CENTRAL HOSP.	7	0	5	0	0	1	0	0	1
○	310007	TOTTORI UNIV.	23	9	6	0	1	5	0	1	1
○	320003	SHIMANE UNIV.	21	0	13	1	0	0	0	0	7
○	320004	SHIMANE PREF. CENTRAL HOSP.	8	0	5	1	0	0	0	0	2
○	330002	OKAYAMA RED CROSS HOSP.	9	0	3	0	0	1	0	0	5
○	330004	OKAYAMA SAISEIKAI GENERAL HOSP.	10	0	6	0	0	1	0	0	3
○	330006	OKAYAMA UNIV.	43	0	21	0	0	5	0	0	16
○	330008	KURASHIKI CENTRAL HOSP.	21	0	11	0	1	6	0	0	3
○	330010	KURASHIKI MED. CENTER	5	5	0	0	0	0	0	0	0
○	340001	FUKUYAMA MED. CENTER	28	0	14	3	1	7	2	0	1
○	340002	ONOMICHI GENERAL HOSP.	11	0	9	0	0	0	0	1	1
○	340007	HIROSHIMA CITY HOSP.	44	0	27	2	0	2	0	0	13
○	340008	HIROSHIMA RED CROSS HOSP.	5	0	2	0	0	1	0	0	2
○	340010	HIROSHIMA CITY ASA HOSP.	9	0	7	0	0	2	0	0	0
○	340012	HIROSHIMA UNIV.	24	0	16	1	2	3	0	1	1
○	340014	HIROSHIMA PREF. HOSP.	10	0	10	0	0	0	0	0	0
○	340015	KURE MED. CENTER	31	0	20	1	0	3	1	0	6
○	340017	KURE KYOSAI HOSP.	9	9	0	0	0	0	0	0	0
○	340018	HIROSHIMA GENERAL HOSP.	8	0	4	0	0	1	0	0	3
○	340031	HIGASHIHIROSHIMA MED. CENTER	9	9	0	0	0	0	0	0	0
○	350003	TOKUYAMA CENTRAL HOSP.	31	31	0	0	0	0	0	0	0
○	350008	YAMAGUCHI RED CROSS HOSP.	7	0	3	1	0	2	0	0	1
○	350009	YAMAGUCHI UNIV.	19	0	8	2	0	4	1	0	3
○	360003	TOKUSHIMA UNIV.	31	0	13	0	0	6	1	0	10
○	360005	TOKUSHIMA PREF. CENTRAL HOSP.	3	0	2	0	0	0	0	0	1
○	370001	TAKAMATSU RED CROSS HOSP.	8	0	5	1	0	2	0	0	0

	A	B	C	D	E	F	G	H	I	J	K
	Institution	Total No. Treated	no description	Alive with no Evidence of the Disease	Alive with Carcinoma	Alive with or without Carcinoma Unknown	Died of Carcinoma	Died of Other Malignant Tumor	Died of Intercurrent Disease	Cause of Death Unknown	Lost to follow-up
○	380001 SHIKOKU CANCER CENTER	74	0	46	2	1	17	0	1	2	5
	380002 EHIME PREF. CENTRAL HOSP.	7	7	0	0	0	0	0	0	0	0
	380006 EHIME UNIV.	20	0	10	0	0	1	0	0	0	9
	390003 KOCHI HEALTH SCIENCES CENTER	7	0	4	0	0	0	0	0	0	3
	390006 KOCHI UNIV.	14	0	1	1	0	5	0	0	0	7
	400008 UNIV. OCCUPATIONAL & ENVIRONMENTAL HEALTH	33	0	13	2	0	7	0	0	0	11
○	400010 KYUSHU MED. CENTER	12	0	8	0	0	2	0	0	0	2
	400012 KYUSHU UNIV.	55	0	34	2	0	4	0	0	0	15
○	400013 FUKUOKA UNIV.	31	0	22	1	1	6	0	1	0	0
	400014 FUKUOKA RED CROSS HOSP.	6	0	2	0	0	2	0	0	0	2
○	400020 KURUME UNIV.	70	0	55	2	1	8	0	1	0	3
○	400040 KYUSHU CANCER CENTER	65	0	47	3	0	13	0	0	0	2
○	410005 SAGA UNIV.	33	0	26	0	0	4	0	0	0	3
○	420001 NAGASAKI MUNI. HOSP.	10	1	3	0	0	6	0	0	0	0
○	420002 NAGASAKI UNIV.	27	0	19	5	0	3	0	0	0	0
○	420003 RED CROSS NAGASAKI ATOMIC BOMB HOSP.	8	0	2	1	0	4	0	1	0	0
○	420006 SASEBO KYOSAI HOSP.	22	0	18	0	2	2	0	0	0	0
○	430001 KUMAMOTO MED. CENTER	42	2	24	0	1	12	0	2	0	1
○	430002 KUMAMOTO UNIV.	40	0	29	0	1	6	0	2	0	2
	430003 KUMAMOTO CITY HOSP.	23	0	14	0	0	4	0	0	0	5
	440002 OITA PREF. HOSP.	32	0	18	0	0	5	0	0	0	9
○	440005 OITA UNIV.	10	0	8	0	0	0	0	0	0	2
	450001 MIYAZAKI PREF. HOSP.	50	0	24	0	2	8	0	0	0	16
○	460001 KAGOSHIMA UNIV.	20	0	8	1	0	7	0	0	0	4
	460004 KAGOSHIMA CITY HOSP.	66	0	27	0	0	7	0	1	0	31
○	470008 RYUKYU UNIV.	88	1	46	9	3	15	0	0	0	14
○	470010 OKINAWA PREF. CHUBU HOSP.	15	0	9	2	0	3	0	1	0	0
	Total	4959	534	2708	163	45	784	21	39	15	650

Table 1. No. of Patients by Stage and Age

Age		~19		20~29		30~39		40~49		50~59		60~69		70~79		80~		Total	
		No.	%	No.	%	No.	%	No.	%	No.	%	No.	%	No.	%	No.	%	No.	%
I	A1	0	0.0	68	1.4	261	5.3	215	4.3	85	1.7	58	1.2	25	0.5	4	0.1	716	14.4
	A2	0	0.0	4	0.1	18	0.4	33	0.7	9	0.2	4	0.1	2	0.0	1	0.0	71	1.4
	A not cl.	0	0.0	3	0.1	22	0.4	23	0.5	15	0.3	9	0.2	6	0.1	0	0.0	78	1.6
	B1	0	0.0	56	1.1	301	6.1	308	6.2	285	5.8	190	3.8	111	2.2	31	0.6	1282	25.9
	B2	1	0.0	17	0.3	90	1.8	106	2.1	81	1.6	37	0.8	22	0.4	3	0.1	357	7.2
	B not cl.	1	0.0	2	0.0	15	0.3	12	0.2	17	0.3	7	0.1	8	0.2	4	0.1	66	1.3
	not cl.	0	0.0	9	0.2	19	0.4	17	0.3	6	0.1	3	0.1	1	0.0	2	0.0	57	1.2
	total	2	0.0	159	3.2	726	14.6	714	14.4	498	10.0	308	6.2	175	3.5	45	0.9	2627	53.0
II	A	0	0.0	9	0.2	50	1.0	53	1.1	67	1.4	79	1.6	48	1.0	17	0.3	323	6.5
	B	0	0.0	16	0.3	84	1.7	173	3.5	243	4.9	155	3.1	136	2.7	52	1.1	859	17.3
	not cl.	0	0.0	0	0.0	0	0.0	0	0.0	0	0.0	1	0.0	0	0.0	1	0.0	2	0.0
	total	0	0.0	25	0.5	134	2.7	226	4.6	310	6.3	235	4.7	184	3.7	70	1.4	1184	23.9
III	A	0	0.0	0	0.0	1	0.0	4	0.1	11	0.2	13	0.3	13	0.3	5	0.1	47	1.0
	B	0	0.0	6	0.1	50	1.0	96	1.9	169	3.4	141	2.8	154	3.1	68	1.4	684	13.8
	not cl.	0	0.0	0	0.0	0	0.0	0	0.0	0	0.0	1	0.0	1	0.0	1	0.0	3	0.1
	total	0	0.0	6	0.1	51	1.0	100	2.0	180	3.6	155	3.1	168	3.4	74	1.5	734	14.8
IV	A	0	0.0	0	0.0	1	0.0	17	0.3	41	0.8	34	0.7	40	0.8	26	0.5	159	3.2
	B	0	0.0	1	0.0	15	0.3	43	0.9	84	1.7	52	1.1	30	0.6	17	0.3	242	4.9
	not cl.	0	0.0	1	0.0	1	0.0	3	0.1	2	0.0	3	0.1	3	0.1	0	0.0	13	0.3
	total	0	0.0	2	0.0	17	0.3	63	1.3	127	2.6	89	1.8	73	1.5	43	0.9	414	8.4
Total		2	0.0	192	3.9	928	18.7	1103	22.2	1115	22.5	787	15.9	600	12.1	232	4.7	4959	

Table 2. Type of Treatment

Treatment FIGO Stage		Surgery															
		Alone		Rad.		Chem.Immun. Hormon		Other		Rad. Chem.Immun. Hormon		Rad. Other		Chem.Immun. Hormon, Other		Rad. Chem.Immun. Hormon, Other	
		No.	%	No.	%	No.	%	No.	%	No.	%	No.	%	No.	%	No.	%
I	A1	683	13.8	1	0.0	3	0.1	1	0.0	5	0.1	0	0.0	0	0.0	0	0.0
	A2	67	1.4	0	0.0	3	0.1	0	0.0	0	0.0	0	0.0	0	0.0	0	0.0
	A not cl.	70	1.4	0	0.0	4	0.1	0	0.0	0	0.0	0	0.0	0	0.0	0	0.0
	B1	706	14.2	156	3.2	135	2.7	4	0.1	152	3.1	0	0.0	2	0.0	2	0.0
	B2	65	1.3	45	0.9	100	2.0	4	0.1	100	2.0	0	0.0	1	0.0	1	0.0
	B not cl.	28	0.6	6	0.1	12	0.2	0	0.0	9	0.2	0	0.0	0	0.0	0	0.0
	not cl.	55	1.1	1	0.0	0	0.0	0	0.0	0	0.0	0	0.0	0	0.0	0	0.0
total	1674	33.8	209	4.2	257	5.2	9	0.2	266	5.4	0	0.0	3	0.1	3	0.1	
II	A	53	1.1	53	1.1	51	1.0	0	0.0	80	1.6	0	0.0	1	0.0	0	0.0
	B	47	1.0	101	2.0	139	2.8	0	0.0	231	4.7	1	0.0	5	0.1	3	0.1
	not cl.	0	0.0	0	0.0	0	0.0	0	0.0	1	0.0	0	0.0	0	0.0	0	0.0
	total	100	2.0	154	3.1	190	3.8	0	0.0	312	6.3	1	0.0	6	0.1	3	0.1
III	A	0	0.0	0	0.0	3	0.1	0	0.0	5	0.1	0	0.0	0	0.0	0	0.0
	B	0	0.0	3	0.1	35	0.7	0	0.0	34	0.7	0	0.0	0	0.0	0	0.0
	not cl.	0	0.0	0	0.0	0	0.0	0	0.0	0	0.0	0	0.0	0	0.0	0	0.0
	total	0	0.0	3	0.1	38	0.8	0	0.0	39	0.8	0	0.0	0	0.0	0	0.0
IV	A	0	0.0	2	0.0	5	0.1	0	0.0	0	0.0	0	0.0	0	0.0	0	0.0
	B	0	0.0	1	0.0	17	0.3	0	0.0	7	0.1	0	0.0	0	0.0	0	0.0
	not cl.	0	0.0	0	0.0	1	0.0	0	0.0	0	0.0	0	0.0	0	0.0	0	0.0
	total	0	0.0	3	0.1	23	0.5	0	0.0	7	0.1	0	0.0	0	0.0	0	0.0
Total	1774	35.8	369	7.4	508	10.2	9	0.2	624	12.6	1	0.0	9	0.2	6	0.1	

Treatment FIGO Stage		Radiation								Chem.Immun. Hormon				Others				Total	
		Alone		Chem.Immun. Hormon		Other		Chem.Immun. Hormon, Other		Alone		Other		Alone		Other			
		No.	%	No.	%	No.	%	No.	%	No.	%	No.	%	No.	%	No.	%		
I	A1	3	0.1	0	0.0	0	0.0	0	0.0	0	0.0	0	0.0	20	0.4	0	0.0	716	14.4
	A2	1	0.0	0	0.0	0	0.0	0	0.0	0	0.0	0	0.0	0	0.0	0	0.0	71	1.4
	A not cl.	2	0.0	1	0.0	0	0.0	0	0.0	0	0.0	0	0.0	1	0.0	0	0.0	78	1.6
	B1	94	1.9	28	0.6	0	0.0	0	0.0	0	0.0	0	0.0	3	0.1	0	0.0	1282	25.9
	B2	16	0.3	23	0.5	0	0.0	0	0.0	1	0.0	0	0.0	1	0.0	0	0.0	357	7.2
	B not cl.	11	0.2	0	0.0	0	0.0	0	0.0	0	0.0	0	0.0	0	0.0	0	0.0	66	1.3
	not cl.	1	0.0	0	0.0	0	0.0	0	0.0	0	0.0	0	0.0	0	0.0	0	0.0	57	1.2
total	128	2.6	52	1.1	0	0.0	0	0.0	1	0.0	0	0.0	25	0.5	0	0.0	2627	53.0	
II	A	33	0.7	50	1.0	0	0.0	0	0.0	1	0.0	0	0.0	1	0.0	0	0.0	323	6.5
	B	151	3.0	165	3.3	4	0.1	0	0.0	11	0.2	0	0.0	1	0.0	0	0.0	859	17.3
	not cl.	1	0.0	0	0.0	0	0.0	0	0.0	0	0.0	0	0.0	0	0.0	0	0.0	2	0.0
	total	185	3.7	215	4.3	4	0.1	0	0.0	12	0.2	0	0.0	2	0.0	0	0.0	1184	23.9
III	A	12	0.2	25	0.5	0	0.0	0	0.0	2	0.0	0	0.0	0	0.0	0	0.0	47	1.0
	B	246	5.0	342	6.9	5	0.1	3	0.1	9	0.2	0	0.0	7	0.1	0	0.0	684	13.8
	not cl.	2	0.0	0	0.0	1	0.0	0	0.0	0	0.0	0	0.0	0	0.0	0	0.0	3	0.1
	total	260	5.2	367	7.4	6	0.1	3	0.1	11	0.2	0	0.0	7	0.1	0	0.0	734	14.8
IV	A	74	1.5	65	1.3	1	0.0	2	0.0	7	0.1	1	0.0	2	0.0	0	0.0	159	3.2
	B	55	1.1	122	2.5	0	0.0	1	0.0	36	0.7	0	0.0	3	0.1	0	0.0	242	4.9
	not cl.	5	0.1	3	0.1	0	0.0	0	0.0	3	0.1	0	0.0	1	0.0	0	0.0	13	0.3
	total	134	2.7	190	3.8	1	0.0	3	0.1	46	0.9	1	0.0	6	0.1	0	0.0	414	8.4
Total	707	14.3	824	16.6	11	0.2	6	0.1	70	1.4	1	0.0	40	0.8	0	0.0	4959	8.4	

**Table 3. 5-Year Results, Treatment Started in 2005**

5-year result	No. of patients	%
Alive with no Evidence of the Disease	2041	68.4
Alive with Carcinoma	128	4.3
Alive with or without Carcinoma Unknown	36	1.2
Died of Carcinoma	570	19.1
Died of Other Malignant Tumor	17	0.6
Died of Intercurrent Disease	29	1.0
Cause of Death Unknown	11	0.4
Lost to follow-up	153	5.1
Total	2985	

**Table 4. 5-Year Survival by Stage, Treatment Started in 2005**

FIGO Stage		Patients treated		5-year survival		Lost to follow-up
		No.		%		
I	A1	381	1625	98.9	91.3	86/1625 (5.3%)
	A2	44		100.0		
	A not cl.	45		-		
	B1	839		90.8		
	B2	239		79.0		
	B not cl.	30		-		
II	not cl.	47	-			
	A	208	86.7	77.8	36/699 (5.2%)	
	B	490	73.9			
not cl.	1	-				
III	A	25	68.0	56.9	23/421 (5.5%)	
	B	396	56.2			
	not cl.	0	-			
IV	A	86	42.7	30.1	8/240 (3.3%)	
	B	149	22.7			
	not cl.	5	-			
Total		2985	78.5			

**Table 5. 5-Year Survival by Histological Type, Treatment Started in 2005**

Histological type	Patients treated		5-year survival
	No.	%	%
Squamous carcinoma	2206	73.9	80.4
Adenocarcinoma	527	17.7	75.7
Adenosquamous carcinoma	129	4.3	74.0
Others	119	4.0	59.4
No description	4	0.1	-

**Table 6. 5-Year Survival by Stage and Histological Type, Treatment Started in 2005**

FIGO Stage	Histology type	Patients treated		5-year survival
		No.	%	%
I	Squamous carcinoma	1132	69.7	93.4
	Adenocarcinoma	351	21.6	88.2
	Adenosquamous carcinoma	68	4.2	88.0
	Others	73	4.5	77.9
	No description	1	0.1	-
II	Squamous carcinoma	553	79.1	81.1
	Adenocarcinoma	87	12.5	67.7
	Adenosquamous carcinoma	36	5.2	75.0
	Others	22	3.2	39.7
	No description	1	0.1	-
III	Squamous carcinoma	356	84.6	59.3
	Adenocarcinoma	46	10.9	47.6
	Adenosquamous carcinoma	10	2.4	44.4
	Others	9	2.1	22.2
	No description	0	0.0	-
IV	Squamous carcinoma	165	68.8	33.2
	Adenocarcinoma	43	17.9	19.6
	Adenosquamous carcinoma	15	6.3	26.7
	Others	15	6.3	20.0
	No description	2	0.8	-

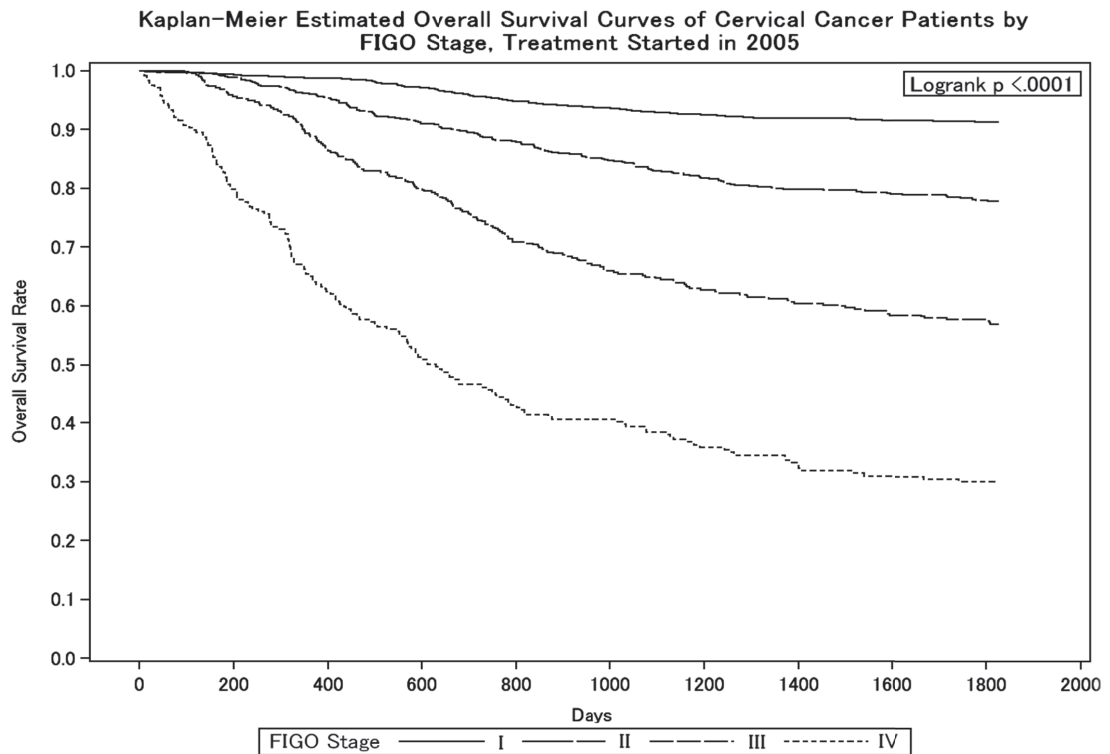
**Table 7. 5-Year Survival by First Therapy, Treatment Started in 2005**

FIGO Stage	Therapy	Patients treated		5-year survival
		No.	%	%
I	Surgery	1420	87.4	93.2
	Radiation	121	7.5	79.5
	(Radiation alone)	(17)	(1.05)	(56.3)
	Chemotherapy	74	4.6	74.2
	Others	10	0.6	-
II	Surgery	314	44.9	80.8
	Radiation	227	32.5	74.2
	(Radiation alone)	(26)	(3.72)	(53.4)
	Chemotherapy	156	22.3	76.8
	Others	2	0.3	-
III	Surgery	9	2.1	66.7
	Radiation	332	78.9	56.0
	(Radiation alone)	(46)	(10.93)	(32.2)
	Chemotherapy	77	18.3	60.5
	Others	3	0.7	-
IV	Surgery	10	4.2	40.0
	Radiation	154	64.2	34.4
	(Radiation alone)	(42)	(17.5)	(20.0)
	Chemotherapy	73	30.4	21.0
	Others	3	1.3	-

**Table 8. 5-Year Survival by TNM Classification, Treatment Started in 2005**

TNM Stage			Patients treated		5-year survival
			No.	%	%
T1a1	N0	M0	335	11.9	98.8
T1a2	N0	M0	46	1.6	100.0
T1b1	N0	M0	780	27.8	91.4
T1b2	N0	M0	191	6.8	80.2
T2a	N0	M0	172	6.1	89.8
T2b	N0	M0	336	12.0	80.2
T3a	N0	M0	19	0.7	78.9
T3b	N0	M0	194	6.9	58.4
T4	N0	M0	37	1.3	52.6
T1a1	N1	M0	2	0.1	100.0
T1b1	N1	M0	45	1.6	84.1
T1b2	N1	M0	48	1.7	73.7
T2a	N1	M0	33	1.2	72.7
T2b	N1	M0	132	4.7	61.2
T3a	N1	M0	5	0.2	20.0
T3b	N1	M0	172	6.1	54.4
T4	N1	M0	30	1.1	43.3
Any T	Any N	M1	231	8.2	32.9

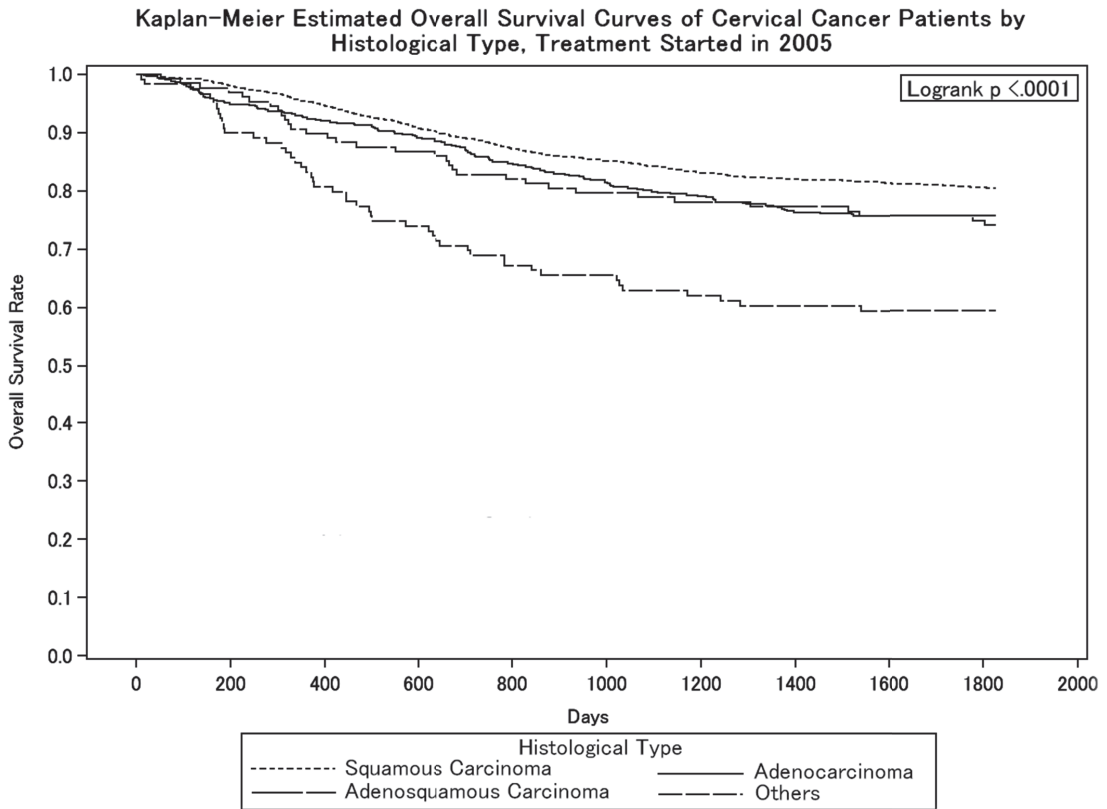
Figure 1.



Test of Equality over Strata			
Test	Chi-Square	DF	Pr > Chi-Square
Log-rank	858.4800	3	<.0001
Wilcoxon	879.3397	3	<.0001
-2Log (LR)	600.4794	3	<.0001

Adjustment for Multiple Comparisons for the Log-rank Test				
Strata Comparison		Chi-Square	p-Values	
FIGO Stage	FIGO Stage		Raw	Tukey-Kramer
I	II	125.3000	<.0001	<.0001
I	III	354.2000	<.0001	<.0001
I	IV	622.5000	<.0001	<.0001
II	III	42.7087	<.0001	<.0001
II	IV	110.9000	<.0001	<.0001
III	IV	12.0904	0.0005	0.0029

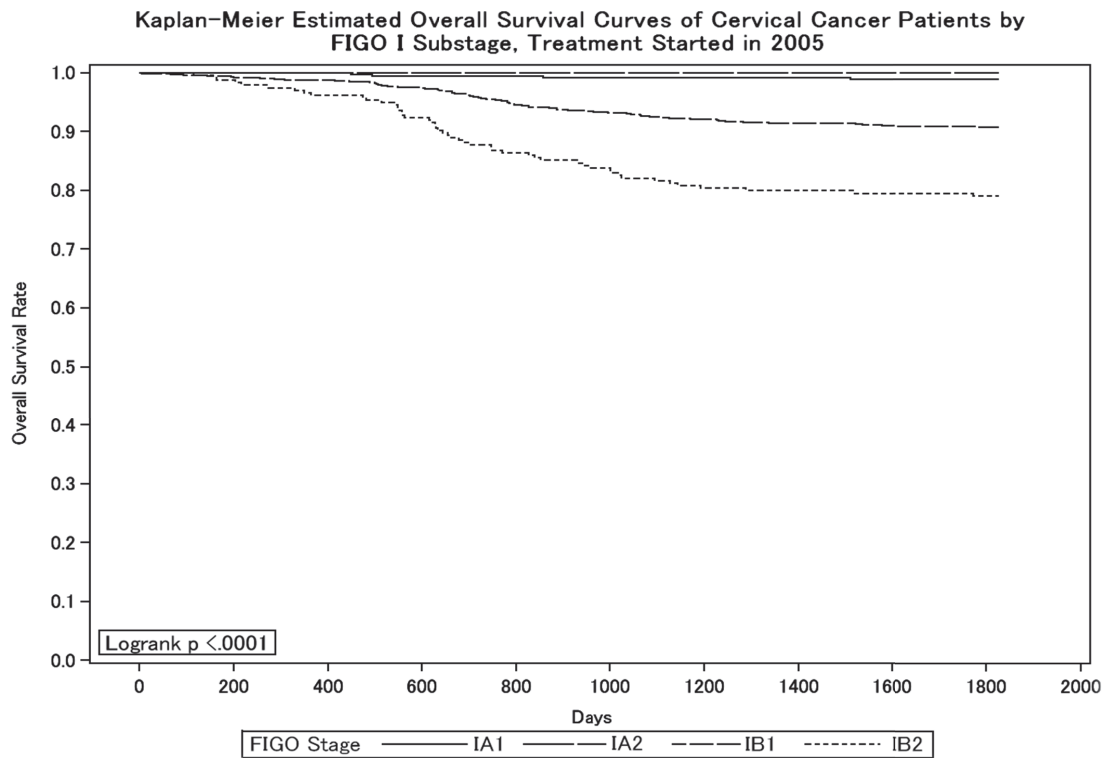
Figure 2.



Test of Equality over Strata			
Test	Chi-Square	DF	Pr > Chi-Square
Log-rank	42.8584	3	<.0001
Wilcoxon	46.2188	3	<.0001
-2Log (LR)	35.4796	3	<.0001

Adjustment for Multiple Comparisons for the Log-rank Test				
Strata Comparison		Chi-Square	p-Values	
Histological Type	Histological Type		Raw	Tukey-Kramer
Adenocarcinoma	Adenosquamous Carcinoma	0.7133	0.3984	0.8331
Adenocarcinoma	Others	0.9848	0.3210	0.7538
Adenocarcinoma	Squamous Carcinoma	11.3835	0.0007	0.0041
Adenosquamous Carcinoma	Others	8.6168	0.0033	0.0175
Adenosquamous Carcinoma	Squamous Carcinoma	16.9733	<.0001	0.0002
Others	Squamous Carcinoma	33.9253	<.0001	<.0001

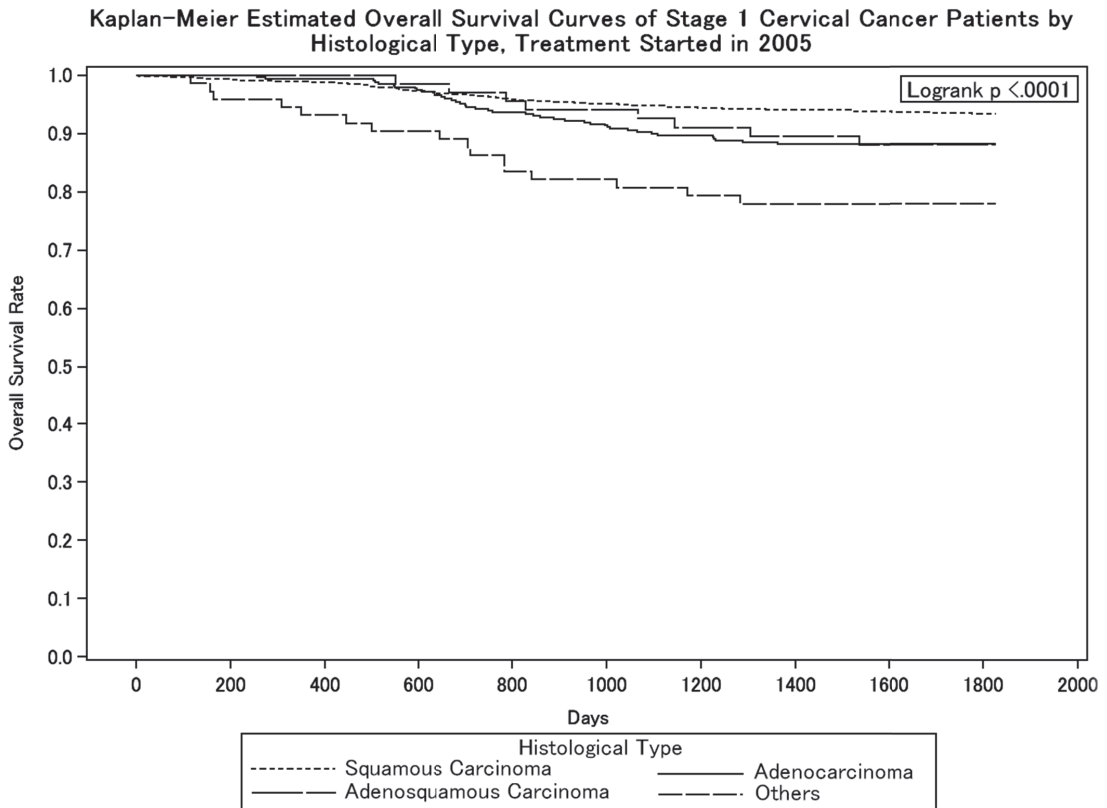
Figure 3.



Test of Equality over Strata			
Test	Chi-Square	DF	Pr > Chi-Square
Log-rank	77.4654	3	<.0001
Wilcoxon	77.8756	3	<.0001
-2Log (LR)	83.9426	3	<.0001

Adjustment for Multiple Comparisons for the Log-rank Test				
Strata Comparison		Chi-Square	p-Values	
FIGO Stage	FIGO Stage		Raw	Tukey-Kramer
1A1	1A2	21.5876	<.0001	<.0001
1A1	1B1	11.8121	0.0006	0.0033
1A1	1B2	69.7139	<.0001	<.0001
1A2	1B1	1.4550	0.2277	0.6229
1A2	1B2	54.1742	<.0001	<.0001
1B1	1B2	9.9462	0.0016	0.0088

Figure 4.

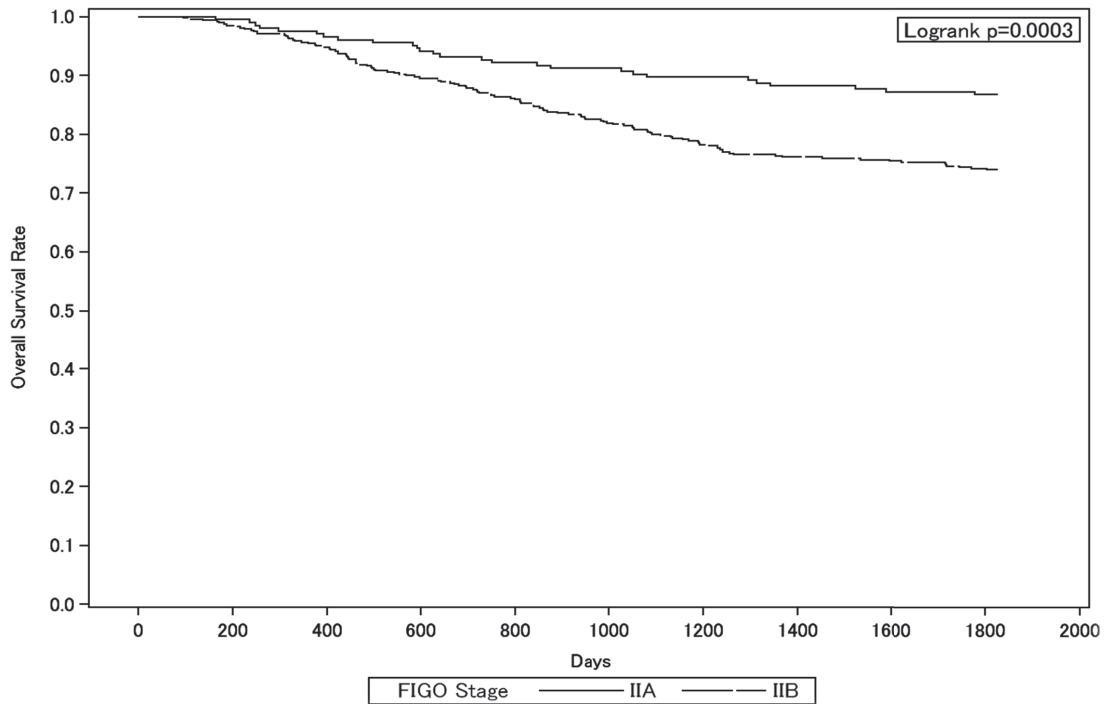


Test of Equality over Strata			
Test	Chi-Square	DF	Pr > Chi-Square
Log-rank	29.4327	3	<.0001
Wilcoxon	29.6687	3	<.0001
-2Log (LR)	23.7740	3	<.0001

Adjustment for Multiple Comparisons for the Log-rank Test				
Strata Comparison		Chi-Square	p-Values	
Histological Type	Histological Type		Raw	Tukey-Kramer
Adenocarcinoma	Adenosquamous Carcinoma	2.5920	0.1074	0.3729
Adenocarcinoma	Others	0.0238	0.8773	0.9987
Adenocarcinoma	Squamous Carcinoma	12.8654	0.0003	0.0019
Adenosquamous Carcinoma	Others	5.7869	0.0161	0.0760
Adenosquamous Carcinoma	Squamous Carcinoma	15.4994	<.0001	0.0005
Others	Squamous Carcinoma	27.1644	<.0001	<.0001

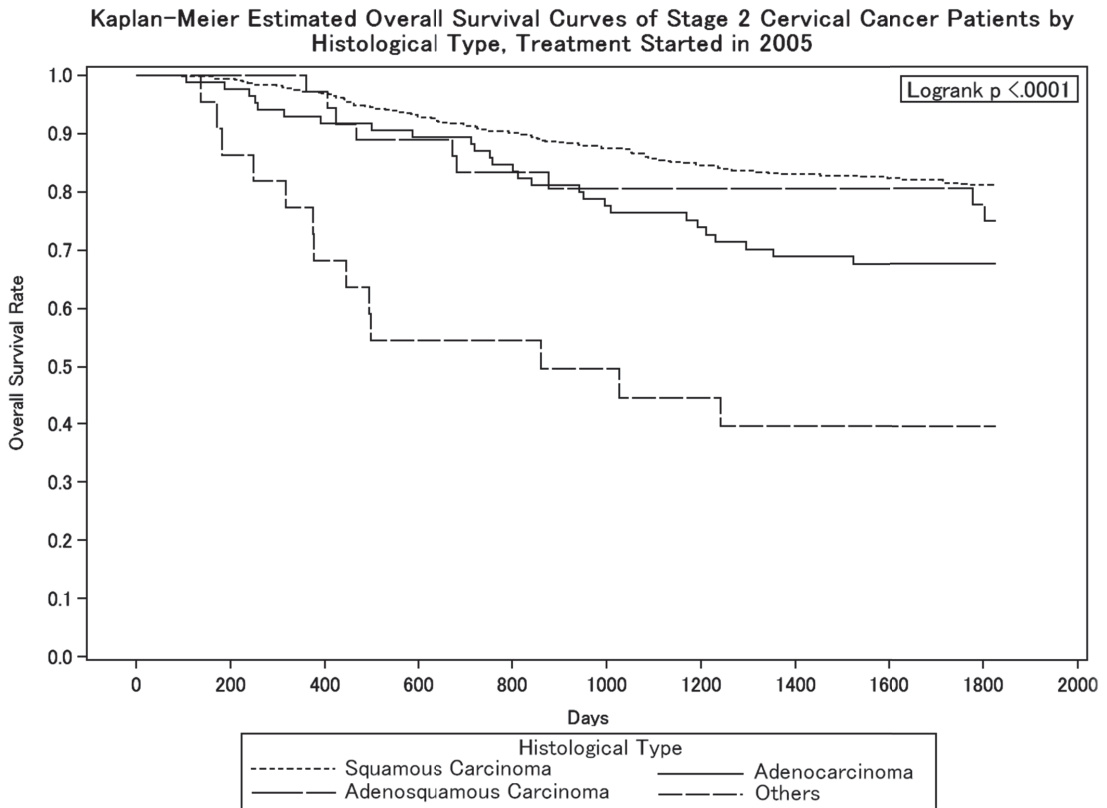
Figure 5.

Kaplan-Meier Estimated Overall Survival Curves of Cervical Cancer Patients by FIGO II Substage, Treatment Started in 2005



Test of Equality over Strata			
Test	Chi-Square	DF	Pr > Chi-Square
Log-rank	13.0234	1	0.0003
Wilcoxon	12.7687	1	0.0004
-2Log (LR)	14.8556	1	0.0001

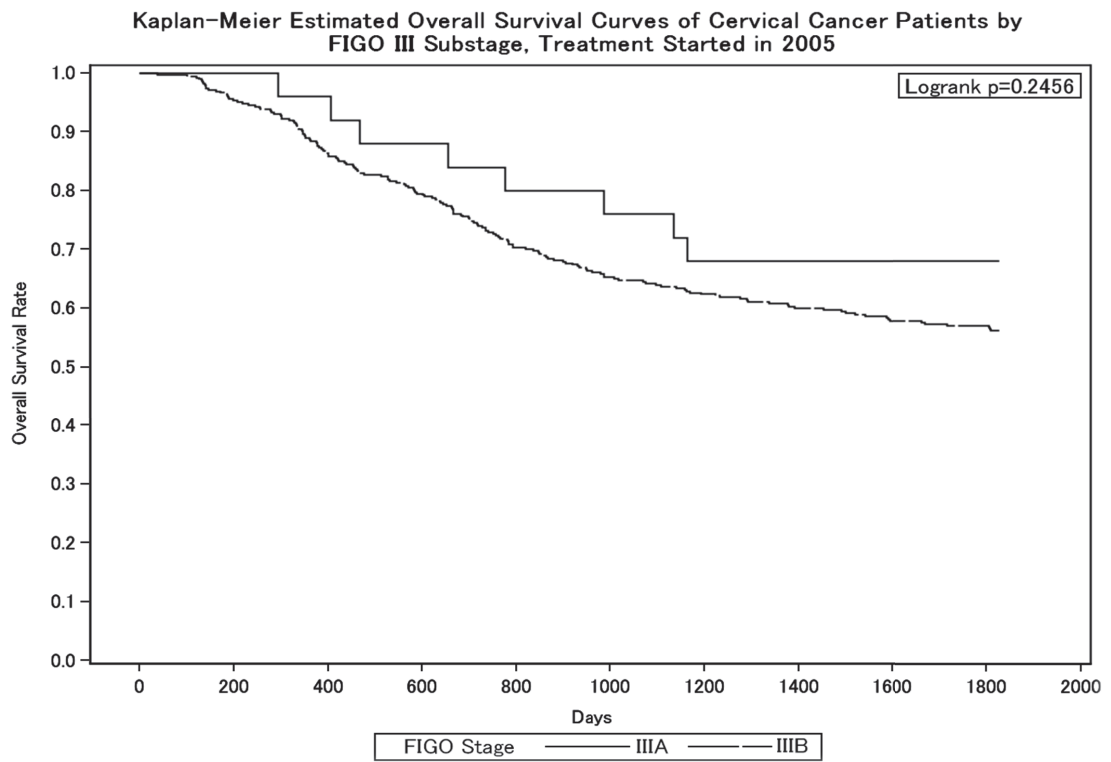
Figure 6.



Test of Equality over Strata			
Test	Chi-Square	DF	Pr > Chi-Square
Log-rank	41.5121	3	<.0001
Wilcoxon	44.9176	3	<.0001
-2Log (LR)	26.4563	3	<.0001

Adjustment for Multiple Comparisons for the Log-rank Test				
Strata Comparison		Chi-Square	p-Values	
Histological Type	Histological Type		Raw	Tukey-Kramer
Adenocarcinoma	Adenosquamous Carcinoma	2.7673	0.0962	0.3432
Adenocarcinoma	Others	0.0149	0.9030	0.9994
Adenocarcinoma	Squamous Carcinoma	13.4227	0.0002	0.0014
Adenosquamous Carcinoma	Others	7.2452	0.0071	0.0358
Adenosquamous Carcinoma	Squamous Carcinoma	10.9099	0.0010	0.0053
Others	Squamous Carcinoma	30.1355	<.0001	<.0001

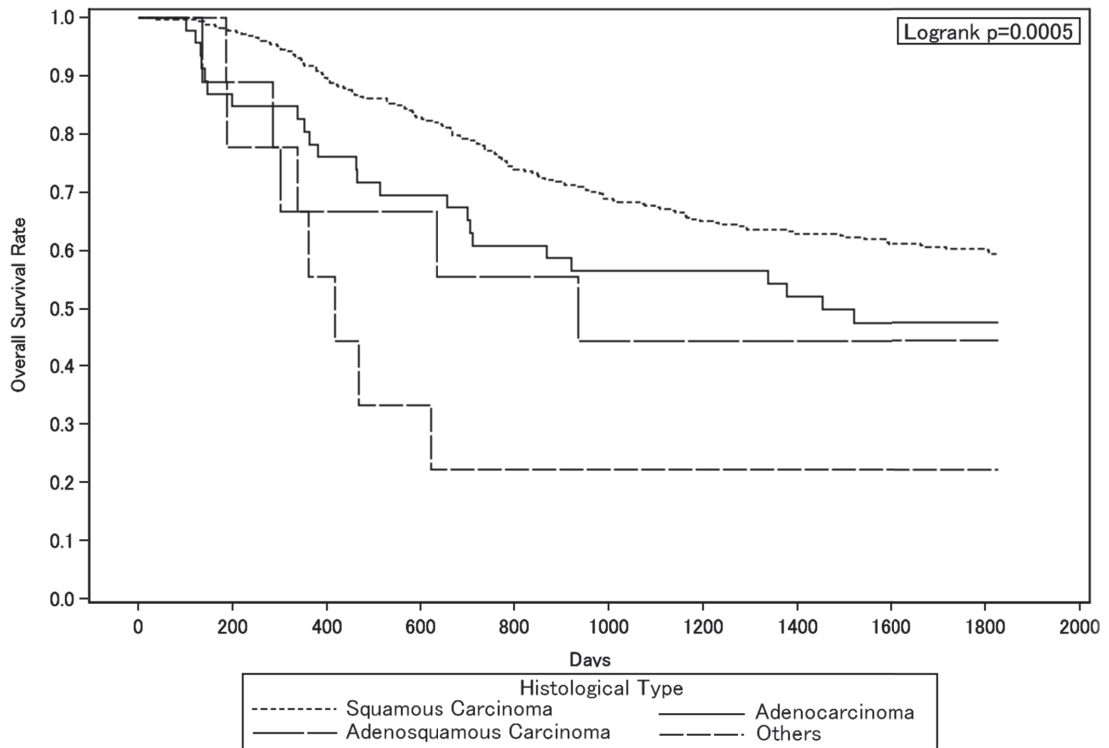
Figure 7.



Test of Equality over Strata			
Test	Chi-Square	DF	Pr > Chi-Square
Log-rank	1.3479	1	0.2456
Wilcoxon	1.4655	1	0.2261
-2Log (LR)	1.5470	1	0.2136

Figure 8.

Kaplan-Meier Estimated Overall Survival Curves of Stage 3 Cervical Cancer Patients by Histological Type, Treatment Started in 2005

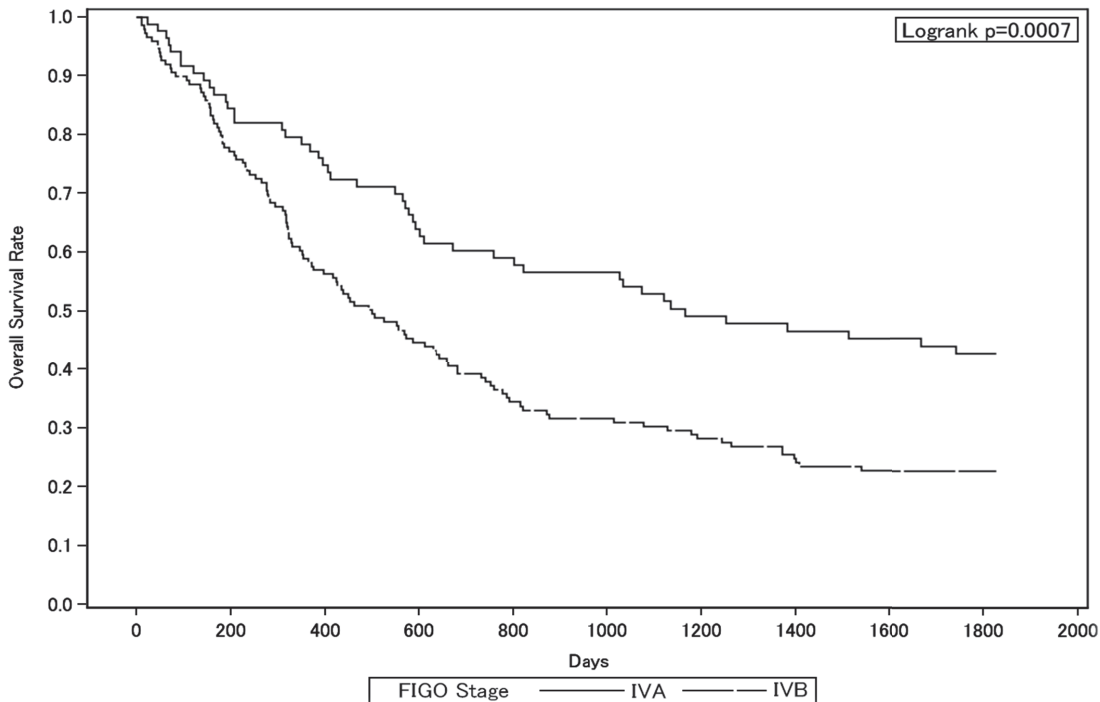


Test of Equality over Strata			
Test	Chi-Square	DF	Pr > Chi-Square
Log-rank	17.8527	3	0.0005
Wilcoxon	22.0562	3	<.0001
-2Log (LR)	11.9293	3	0.0076

Adjustment for Multiple Comparisons for the Log-rank Test				
Strata Comparison		Chi-Square	p-Values	
Histological Type	Histological Type		Raw	Tukey-Kramer
Adenocarcinoma	Adenosquamous Carcinoma	1.1694	0.2795	0.7009
Adenocarcinoma	Others	0.1563	0.6926	0.9791
Adenocarcinoma	Squamous Carcinoma	6.3607	0.0117	0.0566
Adenosquamous Carcinoma	Others	1.8705	0.1714	0.5197
Adenosquamous Carcinoma	Squamous Carcinoma	8.8078	0.0030	0.0159
Others	Squamous Carcinoma	14.0634	0.0002	0.0010

Figure 9.

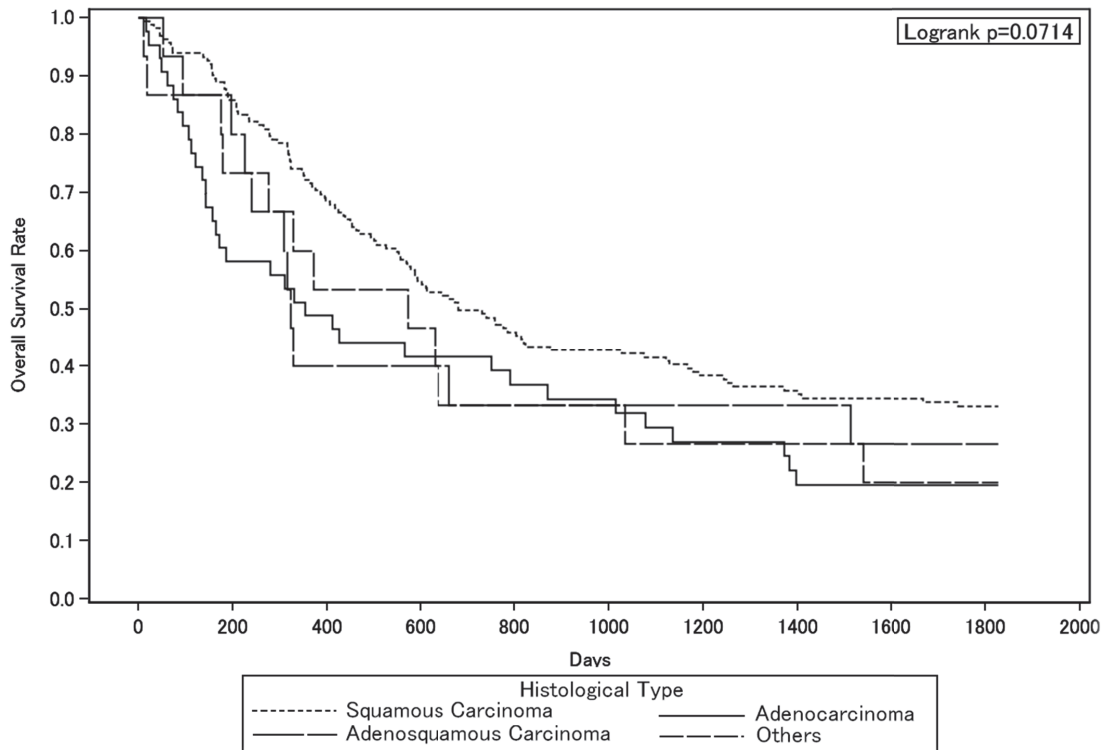
Kaplan-Meier Estimated Overall Survival Curves of Cervical Cancer Patients by FIGO IV Substage, Treatment Started in 2005



Test of Equality over Strata			
Test	Chi-Square	DF	Pr > Chi-Square
Log-rank	11.6093	1	0.0007
Wilcoxon	10.8610	1	0.0010
-2Log (LR)	15.9040	1	<.0001

Figure 10.

Kaplan-Meier Estimated Overall Survival Curves of Stage 4 Cervical Cancer Patients by Histological Type, Treatment Started in 2005



Test of Equality over Strata			
Test	Chi-Square	DF	Pr > Chi-Square
Log-rank	7.0170	3	0.0714
Wilcoxon	10.1188	3	0.0176
-2Log (LR)	7.0912	3	0.0690

Adjustment for Multiple Comparisons for the Log-rank Test				
Strata Comparison		Chi-Square	p-Values	
Histological Type	Histological Type		Raw	Tukey-Kramer
Adenocarcinoma	Adenosquamous Carcinoma	2.0614	0.1511	0.4769
Adenocarcinoma	Others	1.6821	0.1947	0.5649
Adenocarcinoma	Squamous Carcinoma	6.8510	0.0089	0.0439
Adenosquamous Carcinoma	Others	0.0303	0.8619	0.9981
Adenosquamous Carcinoma	Squamous Carcinoma	5.0191	0.0251	0.1125
Others	Squamous Carcinoma	5.4232	0.0199	0.0916

## 子宮体癌治療成績

## Statement for the Year 2005, Inclusive, Corpus

Table A. 5-Year Results, Stage I-IV

A		B	C	D	E	F	G	H	I	J	K
Institution		Total No. Treated	no description	Alive with no Evidence of the Disease	Alive with Carcinoma	Alive with or without Carcinoma Unknown	Died of Carcinoma	Died of Other Malignant Tumor	Died of Intercurrent Disease	Cause of Death Unknown	Lost to follow-up
○	010003	HOKKAIDO CANCER CENTER	34	0	24	0	1	4	1	0	3
	010022	JR SAPPORO HOSP.	6	6	0	0	0	0	0	0	0
	010025	SAPPORO MED. UNIV.	40	0	27	0	0	1	0	0	12
○	010027	HOKKAIDO UNIV.	35	0	30	0	1	2	0	0	2
○	010028	KKR SAPPORO MED. CENTER	5	0	5	0	0	0	0	0	0
○	010040	ASAHIKAWA MED. COLL.	16	0	14	0	0	1	0	0	1
	010045	KUSHIRO ROSAI HOSP.	8	8	0	0	0	0	0	0	0
○	020012	HIROSAKI UNIV.	19	0	14	0	0	4	0	1	0
○	020017	MISAWA CITY HOSP.	2	0	1	0	0	1	0	0	0
○	040004	TOHOKU UNIV.	73	0	53	1	1	8	2	1	7
	040013	SENDAI MED. CENTER	12	0	7	0	0	2	0	0	3
○	050001	AKITA RED CROSS HOSP.	5	0	4	0	0	0	0	1	0
○	050003	AKITA UNIV.	26	0	17	2	0	7	0	0	0
○	060002	YAMAGATA PREF. CENTRAL HOSP.	14	0	14	0	0	0	0	0	0
○	060005	YAMAGATA UNIV.	26	1	21	0	0	3	0	0	1
	070003	FUKUSHIMA MED. UNIV.	23	0	15	0	0	3	0	0	5
○	080001	TSUCHIURA KYODO GENERAL HOSP.	9	0	6	0	1	2	0	0	0
	080003	KASUMIGAURA MED. CENTER	16	16	0	0	0	0	0	0	0
○	080007	TSUKUBA UNIV.	43	0	29	2	0	5	0	0	7
	080017	MITO MED. CENTER	9	9	0	0	0	0	0	0	0
	080021	HITACHI GENERAL HOSP.	31	27	0	0	0	3	1	0	0
○	080031	TSUKUBA MED. CENTER	1	0	0	0	0	1	0	0	0
○	090004	DOKKYO MED. UNIV.	32	0	18	1	1	6	1	0	5
○	090005	SAISEIKAI UTSUNOMIYA HOSP.	17	0	14	0	0	2	0	0	1
○	090011	ASHIKAGA RED CROSS HOSP.	8	0	4	0	0	3	1	0	0
	090015	JICHI MED. UNIV.	36	0	0	0	0	0	0	0	36
○	090016	TOCHIGI CANCER CENTER	15	0	10	1	0	3	0	0	1
	100012	GUNMA UNIV.	19	0	13	0	0	2	0	0	4
	100022	GUNMA PREF. CANCER CENTER	47	0	12	0	0	7	0	0	28
○	110008	SAITAMA SHAKAI HOKEN HOSP.	10	0	9	0	0	1	0	0	0
○	110014	KOSHIGAYA MUNI. HOSP.	22	0	20	0	0	1	0	0	1
	110022	SAITAMA MED. CENTER	37	37	0	0	0	0	0	0	0
○	110023	SAITAMA NATIONAL HOSP.	16	0	9	0	0	4	0	0	3
○	110027	NATIONAL DEFENSE MED. COLL.	29	0	16	6	0	7	0	0	0
○	110030	SAITAMA CANCER CENTER	62	0	52	1	0	8	0	0	0
○	120005	CHIBA UNIV.	19	0	13	1	1	2	0	0	2
	120012	MATSUDO CITY HOSP.	16	0	11	0	0	1	0	0	4
	120015	TOKYO DENTAL COLL. ICHIKAWA GENERAL HOSP.	14	0	11	0	0	0	0	0	3
	120021	JIKEI UNIV. KASHIWA HOSP.	45	45	0	0	0	0	0	0	0
○	120023	JUNTENDO UNIV. URAYASU HOSP.	22	0	20	0	0	2	0	0	0
○	120029	ASAHI CENTRAL HOSP.	30	0	18	3	0	5	0	1	3
○	120035	KAMEDA MED. CENTER	20	0	13	0	1	5	0	1	0
○	120042	CHIBA CANCER CENTER	46	0	40	0	0	3	0	0	3
○	120043	NATIONAL INS. OF RADIOLOGICAL SCIENCES	6	0	2	0	0	3	0	1	0
○	130009	NATIONAL CANCER CENTER	66	0	50	1	0	12	0	0	3
○	130024	TOKYO MED. DENT. UNIV.	17	0	13	0	0	1	0	2	1
	130025	NIPPON MED. SCH.	19	0	15	0	0	0	0	0	4
○	130026	TOKYO UNIV.	31	0	23	2	0	4	0	0	2
	130029	TOKYO WOMENS MED. UNIV. MED. CENTER EAST	12	2	8	0	0	1	0	0	1
	130034	JIKEI UNIV. KATSUSHIKA MED. CENTER	11	11	0	0	0	0	0	0	0
	130046	SHOWA UNIV.	15	0	7	0	0	2	0	0	6
○	130050	TOHO UNIV. OMORI HOSP.	15	0	9	0	2	4	0	0	0
○	130055	RED CROSS MED. CENTER	16	0	12	1	0	1	1	1	0
○	130061	TOKYO MED. CENTER	18	0	14	1	1	2	0	0	0

A		B	C	D	E	F	G	H	I	J	K
Institution		Total No. Treated	no description	Alive with no Evidence of the Disease	Alive with Carcinoma	Alive with or without Carcinoma Unknown	Died of Carcinoma	Died of Other Malignant Tumor	Died of Intercurrent Disease	Cause of Death Unknown	Lost to follow-up
○	130063 KOSEI CENTRAL HOSP.	4	0	4	0	0	0	0	0	0	0
○	130077 KEIO UNIV.	68	0	46	2	0	13	0	0	0	7
	130080 NATIONAL CENTER FOR GLOBAL HEALTH AND MED.	10	10	0	0	0	0	0	0	0	0
	130081 TOKYO WOMENS MED. UNIV.	30	30	0	0	0	0	0	0	0	0
	130085 KOSEI HOSP.	7	0	5	0	0	0	0	0	0	2
○	130092 TEIKYO UNIV.	15	0	11	0	1	0	1	0	1	1
○	130095 NIHON UNIV.	13	0	10	0	0	2	0	0	0	1
○	130099 MUSASHINO RED CROSS HOSP.	21	0	15	0	1	5	0	0	0	0
○	130112 MACHIDA MUNI. HOSP.	12	0	9	1	0	0	0	0	0	2
○	130116 JIKEI UNIV. 3RD HOSP.	32	1	22	1	0	3	0	0	0	5
○	130119 NIPPON MED. SCH. TAMA NAGAYAMA HOSP.	10	0	8	0	0	1	0	0	0	1
○	130122 TOKYO METRO. KOMAGOME HOSP.	36	0	26	1	1	4	0	0	0	4
○	130124 KYOUNDO HOSP.	16	0	14	0	0	0	0	0	0	2
○	130125 CANCER INST. HOSP.	100	0	77	3	0	5	2	0	1	12
	130135 TAMA-NAMBU CHIKI HOSP.	14	14	0	0	0	0	0	0	0	0
○	140006 NIPPON MED. SCH. MUSASHI KOSUGI HOSP.	12	0	11	0	0	0	0	0	0	1
○	140008 KANTO ROSAI HOSP.	8	0	7	0	0	0	0	0	0	1
	140012 ST. MARIANNA UNIV.	26	23	0	0	0	1	0	0	0	2
	140016 YOKOHAMA ROSAI HOSP.	24	0	12	1	0	5	0	1	0	5
○	140017 SHOWA UNIV. FUJIGAOKA HOSP.	17	0	16	0	0	0	0	0	0	1
	140020 KITAZATO UNIV.	58	48	0	0	0	8	0	0	1	1
○	140029 YOKOHAMA CITY UNIV.	37	0	28	0	0	7	1	0	0	1
○	140030 YOKOHAMA MINAMI KYOSAI HOSP.	16	0	10	0	1	4	0	0	0	1
○	140035 YOKOHAMA MUNI. HOSP.	15	0	8	0	1	3	1	0	0	2
	140037 ST. MARIANNA UNIV. YOKOHAMA CITY SEIBU HOSP.	5	0	2	0	0	1	0	0	0	2
	140038 YAMATO MUNI. HOSP.	7	7	0	0	0	0	0	0	0	0
○	140054 ISEHARA KYODO HO S P.	10	0	7	0	0	1	0	0	1	1
○	140055 TOKAI UNIV.	22	0	17	0	0	4	0	0	0	1
○	140059 KANAGAWA CANCER CENTER	68	0	55	0	0	11	0	1	0	1
○	140061 YOKOHAMA CITY UNIV. MED. CENTER	7	0	7	0	0	0	0	0	0	0
○	150002 YAMANASHI PREF. CENTRAL HOSP.	26	0	25	0	0	1	0	0	0	0
○	150006 UNIV. OF YAMANASHI	20	0	16	1	0	1	0	0	0	2
○	160001 NAGANO RED CROSS HOSP.	36	0	32	0	0	2	0	0	0	2
○	160006 SHINSHU UNIV.	27	0	19	0	0	5	0	0	0	3
	160014 MATSUMOTO MED. CENTER MATSUMOTO HOSP.	3	3	0	0	0	0	0	0	0	0
	170006 FUJI CITY GENERAL HOSP.	8	0	3	0	0	3	0	0	0	2
○	170009 SHIZUOKA GENERAL HOSP.	29	0	21	1	0	4	0	0	0	3
○	180001 NAGAOKA RED CROSS HOSP.	10	0	8	0	0	0	0	0	0	2
○	180009 NIIGATA UNIV.	30	0	27	0	0	2	0	0	0	1
○	180010 NIIGATA CANCER CENTER HOSP.	36	0	34	0	0	1	0	1	0	0
○	190001 TOYAMA UNIV.	14	0	11	0	0	1	1	0	0	1
○	190002 TOYAMA RED CROSS HOSP.	7	0	6	0	0	1	0	0	0	0
○	190003 TOYAMA PREF. CENTRAL HOSP.	23	0	17	2	0	2	0	0	0	2
○	200001 KANAZAWA MED. UNIV.	11	0	10	0	0	0	0	0	0	1
○	200002 KANAZAWA MED. CENTER	8	0	7	1	0	0	0	0	0	0
	200004 KANAZAWA UNIV.	19	0	14	0	0	0	0	0	0	5
	210003 FUKUI UNIV.	9	9	0	0	0	0	0	0	0	0
○	210004 FUKUI RED CROSS HOSP.	8	0	5	0	0	2	0	0	0	1
○	220002 GIFU UNIV.	24	0	20	0	0	2	1	0	0	1
○	230014 RED CROSS NAGOYA DAIICHI HOSP.	17	0	15	1	0	1	0	0	0	0
	230024 NAGOYA MED. CENTER	17	17	0	0	0	0	0	0	0	0
○	230031 NAGOYA UNIV.	38	0	26	1	0	6	0	0	0	5
○	230034 NAGOYA CITY UNIV.	21	0	17	0	1	3	0	0	0	0
○	230035 FUJITA HEALTH UMIN.	22	0	18	0	0	3	0	0	0	1
○	230040 AICHI MED. UNIV.	18	0	17	0	0	0	0	0	0	1
○	230052 AICHI CANCER CENTER	43	0	35	2	0	6	0	0	0	0
○	240002 MIE PREF. GENERAL MED. CENTER	16	1	11	0	0	3	0	0	0	1
	240003 YOKKAICHI MUNI. HOSP.	13	0	10	0	0	0	0	0	0	3
○	240009 MIE UNIV.	26	0	21	1	0	0	1	0	0	3



A		B	C	D	E	F	G	H	I	J	K
Institution		Total No. Treated	no description	Alive with no Evidence of the Disease	Alive with Carcinoma	Alive with or without Carcinoma Unknown	Died of Carcinoma	Died of Other Malignant Tumor	Died of Intercurrent Disease	Cause of Death Unknown	Lost to follow-up
○	380006	EHIME UNIV.	21	0	12	1	2	6	0	0	0
	390003	KOCHI HEALTH SCIENCES CENTER	14	0	9	1	0	0	1	0	3
○	390006	KOCHI UNIV.	13	0	9	0	0	1	1	0	2
○	400008	UNIV. OCCUPATIONAL & ENVIRONMENTAL HEALTH	19	0	13	0	0	4	0	1	1
○	400010	KYUSHU MED. CENTER	10	0	7	0	0	1	0	0	2
○	400012	KYUSHU UNIV.	50	0	37	0	0	4	0	1	8
○	400014	FUKUOKA RED CROSS HOSP.	12	0	5	1	0	3	0	1	2
○	400020	KURUME UNIV.	42	0	35	1	0	3	0	0	3
○	400040	KYUSHU CANCER CENTER	52	0	40	1	0	5	1	1	4
○	410005	SAGA UNIV.	18	0	14	2	0	2	0	0	0
○	420001	NAGASAKI MUNI. HOSP.	8	0	8	0	0	0	0	0	0
○	420002	NAGASAKI UNIV.	31	0	23	1	0	4	1	0	2
○	420003	RED CROSS NAGASAKI ATOMIC BOMB HOSP.	8	0	5	0	0	2	0	0	1
○	420006	SASEBO KYOSAI HOSP.	17	0	13	0	0	4	0	0	0
○	430001	KUMAMOTO MED. CENTER	32	1	23	1	3	4	0	0	0
○	430002	KUMAMOTO UNIV.	41	1	29	1	0	7	0	0	3
○	430003	KUMAMOTO CITY HOSP.	35	0	26	2	0	2	0	1	3
○	440002	OITA PREF. HOSP.	25	0	19	0	0	4	0	0	2
○	440005	OITA UNIV.	11	0	9	0	0	1	0	0	1
○	450001	MIYAZAKI PREF. HOSP.	21	0	18	0	0	2	0	0	1
	460001	KAGOSHIMA UNIV.	39	0	26	0	0	3	1	0	9
	460004	KAGOSHIMA CITY HOSP.	45	0	21	4	0	9	0	1	10
	470008	RYUKYU UNIV.	52	1	32	6	0	1	0	0	12
○	470010	OKINAWA PREF. CHUBU HOSP.	11	0	8	0	0	3	0	0	0
Total		4361	451	2789	99	26	454	32	25	10	475

Table 1. No. of Patients by Stage and Age

Age		~19		20~29		30~39		40~49		50~59		60~69		70~79		80~		Total	
		No.	%	No.	%	No.	%	No.	%	No.	%	No.	%	No.	%	No.	%	No.	%
I	A	0	0.0	18	0.4	101	2.3	154	3.5	316	7.3	121	2.8	72	1.7	18	0.4	800	18.3
	B	0	0.0	5	0.1	82	1.9	170	3.9	627	14.4	372	8.5	153	3.5	30	0.7	1439	33.0
	C	0	0.0	0	0.0	14	0.3	30	0.7	177	4.1	194	4.5	143	3.3	36	0.8	594	13.6
	not cl.	0	0.0	0	0.0	2	0.1	3	0.1	5	0.1	0	0.0	1	0.0	2	0.1	13	0.3
	total	0	0.0	23	0.5	199	4.6	357	8.2	1125	25.8	687	15.8	369	8.5	86	2.0	2846	65.3
II	A	0	0.0	1	0.0	12	0.3	24	0.6	45	1.0	34	0.8	24	0.6	6	0.1	146	3.4
	B	0	0.0	0	0.0	14	0.3	32	0.7	76	1.7	47	1.1	40	0.9	14	0.3	223	5.1
	not cl.	0	0.0	0	0.0	1	0.0	2	0.1	3	0.1	1	0.0	2	0.1	3	0.1	12	0.3
	total	0	0.0	1	0.0	27	0.6	58	1.3	124	2.8	82	1.9	66	1.5	23	0.5	381	8.7
III	A	0	0.0	3	0.1	25	0.6	69	1.6	182	4.2	90	2.1	61	1.4	15	0.3	445	10.2
	B	0	0.0	0	0.0	0	0.0	1	0.0	4	0.1	9	0.2	6	0.1	3	0.1	23	0.5
	C	0	0.0	2	0.1	11	0.3	36	0.8	126	2.9	105	2.4	65	1.5	12	0.3	357	8.2
	not cl.	0	0.0	0	0.0	0	0.0	0	0.0	10	0.2	8	0.2	4	0.1	1	0.0	23	0.5
	total	0	0.0	5	0.1	36	0.8	106	2.4	322	7.4	212	4.9	136	3.1	31	0.7	848	19.5
IV	A	0	0.0	0	0.0	0	0.0	2	0.1	9	0.2	5	0.1	4	0.1	2	0.1	22	0.5
	B	0	0.0	1	0.0	14	0.3	27	0.6	96	2.2	70	1.6	47	1.1	5	0.1	260	6.0
	not cl.	0	0.0	0	0.0	0	0.0	1	0.0	2	0.1	1	0.0	0	0.0	0	0.0	4	0.1
	total	0	0.0	1	0.0	14	0.3	30	0.7	107	2.5	76	1.7	51	1.2	7	0.2	286	6.6
Total		0	0.0	30	0.7	276	6.3	551	12.6	1678	38.5	1057	24.2	622	14.3	147	3.4	4361	

Table 2. Type of Treatment

Treatment FIGO Stage		Surgery															
		Alone		Rad.		Chem.Immun. Hormon		Other		Rad. Chem.Immun. Hormon		Rad. Other		Chem.Immun. Hormon, Other		Rad. Chem.Immun. Hormon, Other	
		No.	%	No.	%	No.	%	No.	%	No.	%	No.	%	No.	%	No.	%
I	A	697	16.0	1	0.0	56	1.3	0	0.0	2	0.1	0	0.0	0	0.0	0	0.0
	B	1144	26.2	23	0.5	259	5.9	0	0.0	4	0.1	0	0.0	0	0.0	0	0.0
	C	188	4.3	55	1.3	331	7.6	1	0.0	10	0.2	0	0.0	0	0.0	0	0.0
	not cl.	8	0.2	0	0.0	2	0.1	0	0.0	0	0.0	0	0.0	0	0.0	0	0.0
	total	2037	46.7	79	1.8	648	14.9	1	0.0	16	0.4	0	0.0	0	0.0	0	0.0
II	A	76	1.7	12	0.3	57	1.3	0	0.0	1	0.0	0	0.0	0	0.0	0	0.0
	B	71	1.6	16	0.4	124	2.8	0	0.0	4	0.1	0	0.0	0	0.0	0	0.0
	not cl.	2	0.1	0	0.0	4	0.1	0	0.0	0	0.0	0	0.0	0	0.0	0	0.0
	total	149	3.4	28	0.6	185	4.2	0	0.0	5	0.1	0	0.0	0	0.0	0	0.0
III	A	86	2.0	18	0.4	325	7.5	0	0.0	12	0.3	0	0.0	0	0.0	0	0.0
	B	4	0.1	0	0.0	11	0.3	0	0.0	3	0.1	0	0.0	0	0.0	0	0.0
	C	36	0.8	14	0.3	270	6.2	0	0.0	21	0.5	0	0.0	0	0.0	1	0.0
	not cl.	1	0.0	0	0.0	12	0.3	0	0.0	2	0.1	0	0.0	0	0.0	0	0.0
	total	127	2.9	32	0.7	618	14.2	0	0.0	38	0.9	0	0.0	0	0.0	1	0.0
IV	A	3	0.1	1	0.0	12	0.3	0	0.0	1	0.0	0	0.0	0	0.0	0	0.0
	B	12	0.3	2	0.1	162	3.7	0	0.0	10	0.2	0	0.0	5	0.1	0	0.0
	not cl.	1	0.0	0	0.0	2	0.1	0	0.0	0	0.0	0	0.0	0	0.0	0	0.0
	total	16	0.4	3	0.1	176	4.0	0	0.0	11	0.3	0	0.0	5	0.1	0	0.0
Total		2329	53.4	142	3.3	1627	37.3	1	0.0	70	1.6	0	0.0	5	0.1	1	0.0

Treatment FIGO Stage		Radiation								Chem.Immun. Hormon				Others				Total	
		Alone		Chem.Immun. Hormon		Other		Chem.Immun. Hormon, Other		Alone		Other		Alone		Other			
		No.	%	No.	%	No.	%	No.	%	No.	%	No.	%	No.	%	No.	%	No.	%
I	A	14	0.3	0	0.0	0	0.0	0	0.0	28	0.6	0	0.0	2	0.1	0	0.0	800	18.3
	B	8	0.2	1	0.0	0	0.0	0	0.0	0	0.0	0	0.0	0	0.0	0	0.0	1439	33.0
	C	3	0.1	3	0.1	0	0.0	0	0.0	3	0.1	0	0.0	0	0.0	0	0.0	594	13.6
	not cl.	2	0.1	0	0.0	0	0.0	0	0.0	1	0.0	0	0.0	0	0.0	0	0.0	13	0.3
	total	27	0.6	4	0.1	0	0.0	0	0.0	32	0.7	0	0.0	2	0.1	0	0.0	2846	65.3
II	A	0	0.0	0	0.0	0	0.0	0	0.0	0	0.0	0	0.0	0	0.0	0	0.0	146	3.4
	B	4	0.1	1	0.0	0	0.0	0	0.0	3	0.1	0	0.0	0	0.0	0	0.0	223	5.1
	not cl.	5	0.1	0	0.0	0	0.0	0	0.0	1	0.0	0	0.0	0	0.0	0	0.0	12	0.3
	total	9	0.2	1	0.0	0	0.0	0	0.0	4	0.1	0	0.0	0	0.0	0	0.0	381	8.7
III	A	0	0.0	1	0.0	0	0.0	0	0.0	3	0.1	0	0.0	0	0.0	0	0.0	445	10.2
	B	2	0.1	1	0.0	0	0.0	0	0.0	1	0.0	0	0.0	1	0.0	0	0.0	23	0.5
	C	5	0.1	6	0.1	0	0.0	0	0.0	4	0.1	0	0.0	0	0.0	0	0.0	357	8.2
	not cl.	2	0.1	3	0.1	0	0.0	0	0.0	3	0.1	0	0.0	0	0.0	0	0.0	23	0.5
	total	9	0.2	11	0.3	0	0.0	0	0.0	11	0.3	0	0.0	1	0.0	0	0.0	848	19.5
IV	A	2	0.1	0	0.0	0	0.0	0	0.0	2	0.1	0	0.0	1	0.0	0	0.0	22	0.5
	B	4	0.1	9	0.2	0	0.0	0	0.0	51	1.2	2	0.1	3	0.1	0	0.0	260	6.0
	not cl.	0	0.0	0	0.0	0	0.0	0	0.0	0	0.0	0	0.0	1	0.0	0	0.0	4	0.1
	total	6	0.1	9	0.2	0	0.0	0	0.0	53	1.2	2	0.1	5	0.1	0	0.0	286	6.6
Total		51	1.2	25	0.6	0	0.0	0	0.0	100	2.3	2	0.1	8	0.2	0	0.0	4361	

**Table 3. 5-Year Results, Treatment Started in 2005**

5-year result	No. of patients	%
Alive with no Evidence of the Disease	2249	80.0
Alive with Carcinoma	69	2.5
Alive with or without Carcinoma Unknown	21	0.8
Died of Carcinoma	322	11.5
Died of Other Malignant Tumor	24	0.9
Died of Intercurrent Disease	16	0.6
Cause of Death Unknown	5	0.2
Lost to follow-up	106	3.8
Total	2812	

**Table 4. 5-Year Survival by Stage, Treatment Started in 2005**

FIGO Stage		Patients treated		5-year survival		Lost to follow-up
		No.		%		
I	A	502	1866	97.6	95.1	63/1866 (3.4%)
	B	975		95.9		
	C	382		89.7		
	not cl.	7		-		
II	A	104	247	91.2	89.2	8/247 (3.2%)
	B	138		88.9		
	not cl.	5		-		
III	A	272	515	85.3	76.8	26/515 (5.1%)
	B	11		42.4		
	C	230		69.1		
	not cl.	2		-		
IV	A	11	184	45.5	23.1	9/184 (4.9%)
	B	170		20.7		
	not cl.	3		-		
Total		2812		86.7		

**Table 5. 5-Year Survival by Stage and Histological Type, Treatment Started in 2005**

FIGO Stage	Histology	Patients treated		5-year survival
		No.	%	%
I	Endometrioid type	1596	85.5	96.5
	Serous, Mucinous, Clear cell type	73	3.9	87.7
	Others	197	10.6	86.6
	No description	0	0.0	-
II	Endometrioid type	201	81.4	91.9
	Serous, Mucinous, Clear cell type	14	5.7	77.4
	Others	32	13.0	77.2
	No description	0	0.0	-
III	Endometrioid type	356	69.1	83.6
	Serous, Mucinous, Clear cell type	53	10.3	54.8
	Others	106	20.6	64.3
	No description	0	0.0	-
IV	Endometrioid type	103	56.0	25.6
	Serous, Mucinous, Clear cell type	31	16.9	19.4
	Others	50	27.2	20.5
	No description	0	0.0	-

**Table 6. 5-Year Survival by Stage and Grade, Treatment Started in 2005**

FIGO Stage	Grade	Patients treated		5-year survival
		No.	%	%
I	Grade 1	1120	60.0	97.4
	Grade 2	425	22.8	96.2
	Grade 3	170	9.1	91.6
	Not Graded	151	8.1	79.2
II	Grade 1	124	50.2	95.9
	Grade 2	72	29.2	85.5
	Grade 3	27	10.9	77.0
	Not Graded	24	9.7	78.0
III	Grade 1	180	35.0	88.6
	Grade 2	141	27.4	74.9
	Grade 3	114	22.1	76.3
	Not Graded	80	15.5	54.2
IV	Grade 1	23	12.5	39.1
	Grade 2	31	16.9	32.3
	Grade 3	54	29.4	15.9
	Not Graded	76	41.3	19.1

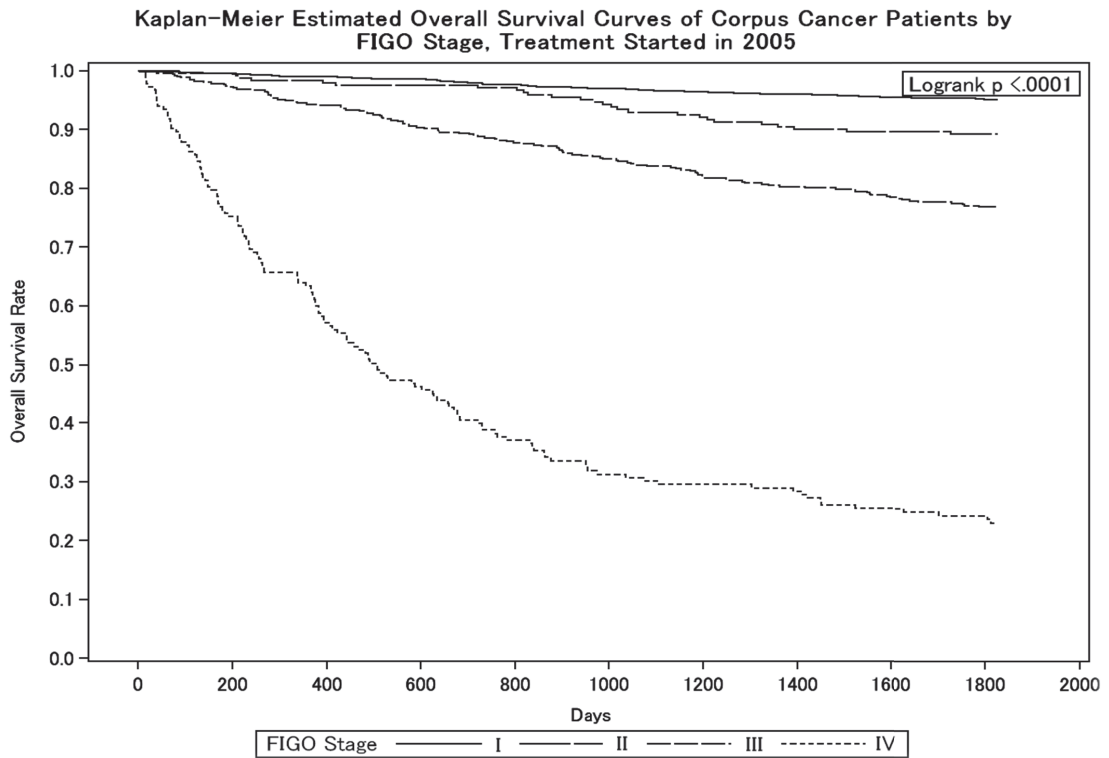
**Table 7. 5-Year Survival by Histological Type and Grade, Treatment Started in 2005**

Histology	Grade	Patients treated		5-year survival
		No.	%	%
Endometrioid type	Grade 1	1324	58.7	95.6
	Grade 2	582	25.8	88.9
	Grade 3	292	12.9	76.1
	Not Graded	58	2.6	76.7
Serous, Mucinous, Clear cell type	Grade 1	23	13.5	82.2
	Grade 2	12	7.0	58.3
	Grade 3	34	19.9	63.7
	Not Graded	102	59.7	61.7
Others	Grade 1	100	26.0	93.9
	Grade 2	75	19.5	81.2
	Grade 3	39	10.1	75.5
	Not Graded	171	44.4	52.9

**Table 8. 5-Year Survival by TNM Classification, Treatment Started in 2005**

TNM Stage			Patients treated		5-year survival
			No.	%	%
T1a	N0	M0	507	18.2	97.4
T1b	N0	M0	1008	36.2	96.0
T1c	N0	M0	403	14.5	88.7
T2a	N0	M0	107	3.9	91.4
T2b	N0	M0	146	5.3	88.1
T3a	N0	M0	160	5.8	86.3
T3b	N0	M0	9	0.3	51.9
T3c	N0	M0	10	0.4	60.0
T4	N0	M0	7	0.3	85.7
T1a	N1	M0	5	0.2	100.0
T1b	N1	M0	31	1.1	72.2
T1c	N1	M0	57	2.1	74.3
T2a	N1	M0	6	0.2	80.0
T2b	N1	M0	27	1.0	73.9
T3a	N1	M0	53	1.9	55.5
T3b	N1	M0	9	0.3	33.3
T3c	N1	M0	56	2.0	76.8
T4	N1	M0	7	0.3	42.9
Any T	AnyN	M1	174	6.3	20.8

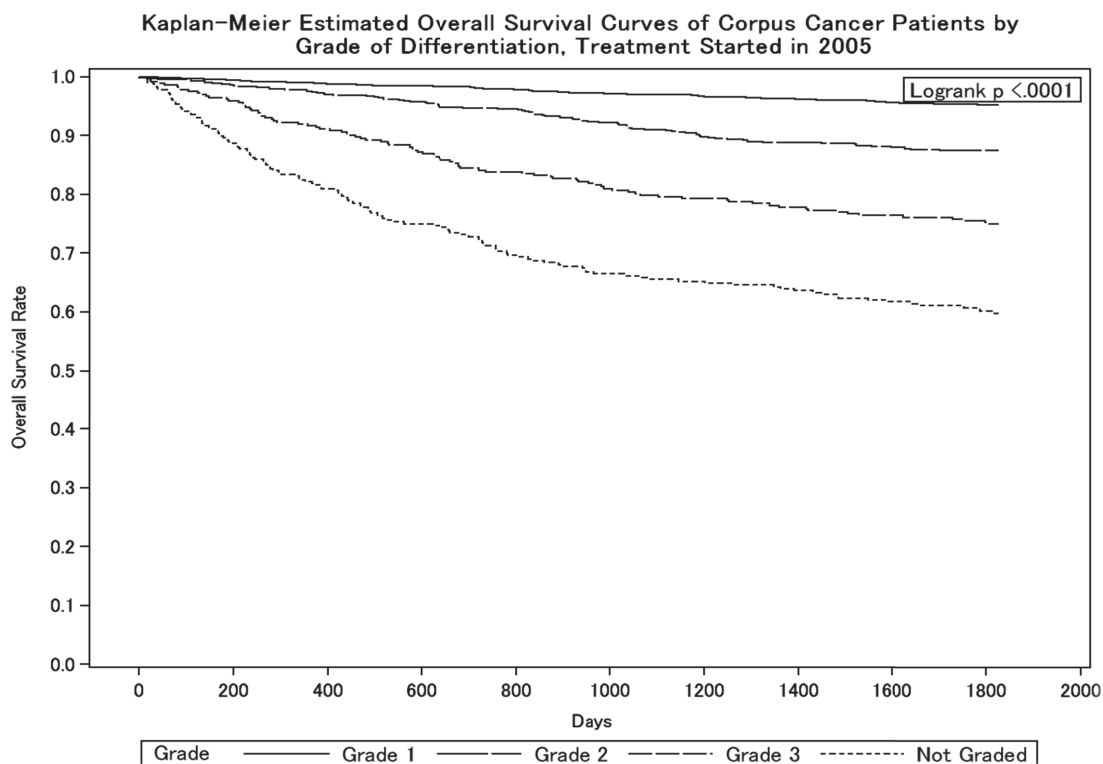
Figure 1.



Test of Equality over Strata			
Test	Chi-Square	DF	Pr > Chi-Square
Log-rank	1367.8630	3	<.0001
Wilcoxon	1376.5842	3	<.0001
-2Log (LR)	621.5137	3	<.0001

Adjustment for Multiple Comparisons for the Log-rank Test				
Strata Comparison		Chi-Square	p-Values	
FIGO Stage	FIGO Stage		Raw	Tukey-Kramer
I	II	167.8000	<.0001	<.0001
I	III	218.8000	<.0001	<.0001
I	IV	795.8000	<.0001	<.0001
II	III	36.4623	<.0001	<.0001
II	IV	382.5000	<.0001	<.0001
III	IV	73.9157	<.0001	<.0001

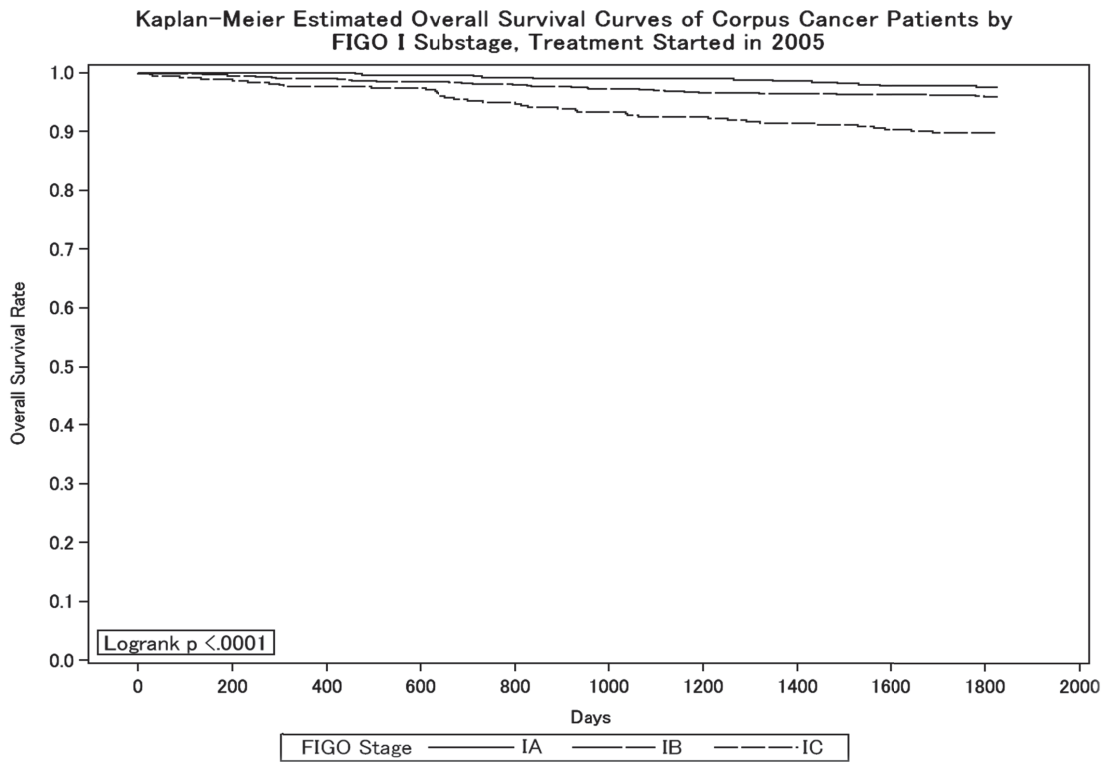
Figure 2.



Test of Equality over Strata			
Test	Chi-Square	DF	Pr > Chi-Square
Log-rank	391.4735	3	<.0001
Wilcoxon	399.2754	3	<.0001
-2Log (LR)	316.4041	3	<.0001

Adjustment for Multiple Comparisons for the Log-rank Test				
Strata Comparison		Chi-Square	p-Values	
Grade	Grade		Raw	Tukey-Kramer
Grade 1	Grade 2	61.8781	<.0001	<.0001
Grade 1	Grade 3	177.2000	<.0001	<.0001
Grade 1	Not Graded	321.5000	<.0001	<.0001
Grade 2	Grade 3	21.0385	<.0001	<.0001
Grade 2	Not Graded	88.5925	<.0001	<.0001
Grade 3	Not Graded	31.0535	<.0001	<.0001

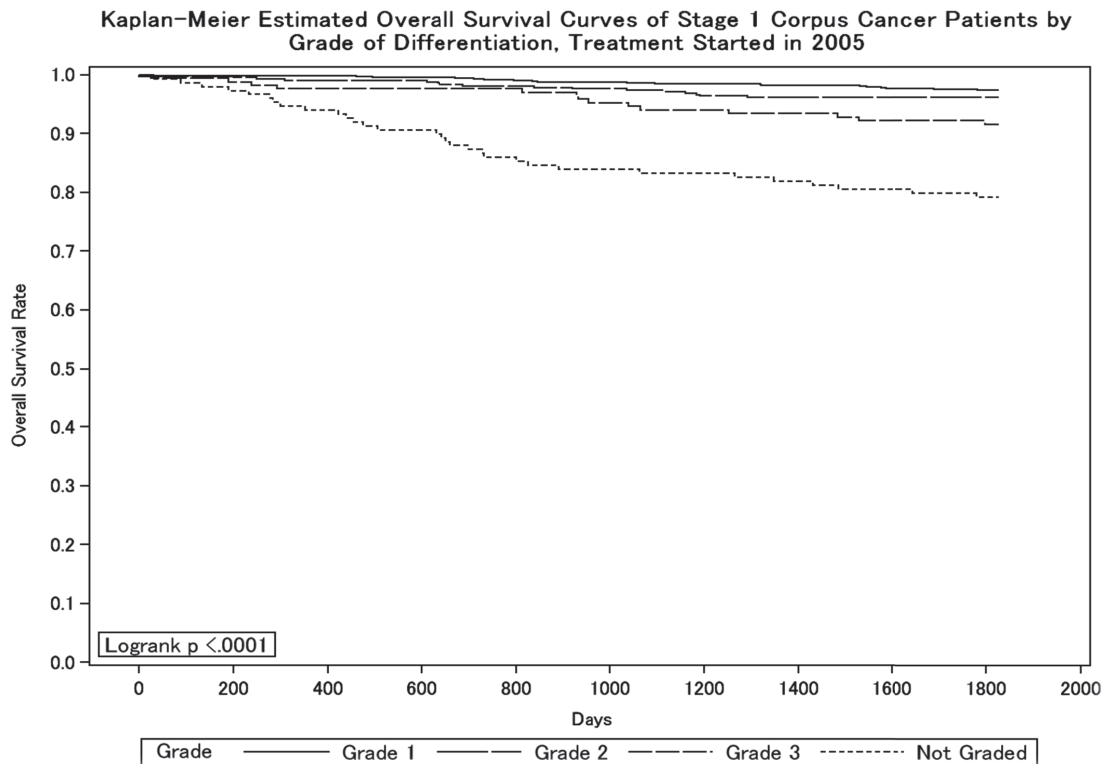
Figure 3.



Test of Equality over Strata			
Test	Chi-Square	DF	Pr > Chi-Square
Log-rank	31.6958	2	<.0001
Wilcoxon	31.9138	2	<.0001
-2Log (LR)	27.3014	2	<.0001

Adjustment for Multiple Comparisons for the Log-rank Test				
Strata Comparison		Chi-Square	p-Values	
FIGO Stage	FIGO Stage		Raw	Tukey-Kramer
IA	IB	0.2988	0.5846	0.8482
IA	IC	26.2088	<.0001	<.0001
IB	IC	14.8545	0.0001	0.0003

Figure 4.

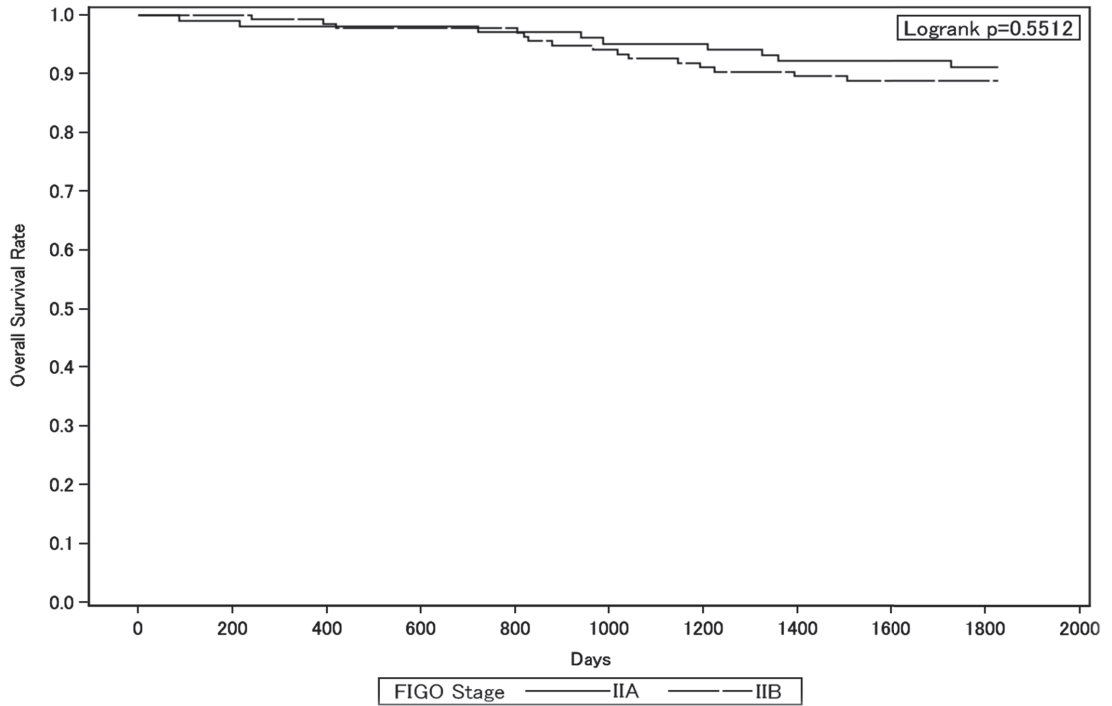


Test of Equality over Strata			
Test	Chi-Square	DF	Pr > Chi-Square
Log-rank	110.7608	3	<.0001
Wilcoxon	112.4072	3	<.0001
-2Log (LR)	68.2666	3	<.0001

Adjustment for Multiple Comparisons for the Log-rank Test				
Strata Comparison		Chi-Square	p-Values	
Grade	Grade		Raw	Tukey-Kramer
Grade 1	Grade 2	7.8101	0.0052	0.0267
Grade 1	Grade 3	27.2184	<.0001	<.0001
Grade 1	Not Graded	73.3478	<.0001	<.0001
Grade 2	Grade 3	3.9979	0.0456	0.1881
Grade 2	Not Graded	33.6827	<.0001	<.0001
Grade 3	Not Graded	23.6866	<.0001	<.0001

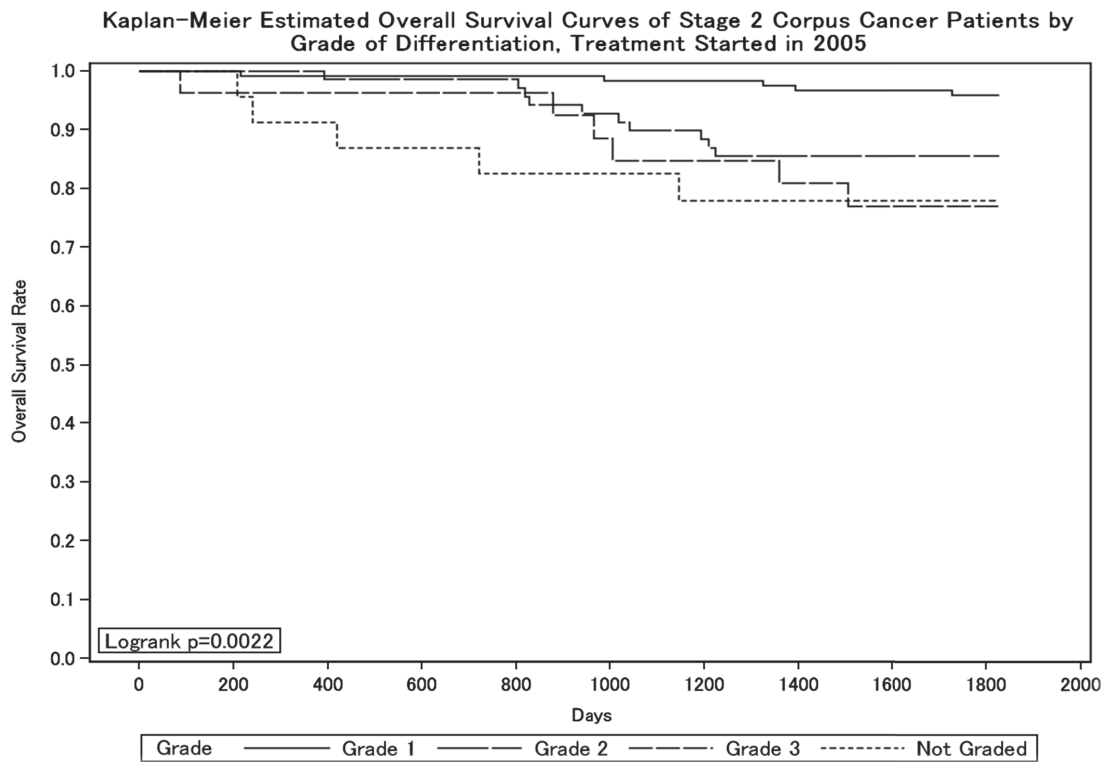
Figure 5.

Kaplan–Meier Estimated Overall Survival Curves of Corpus Cancer Patients by FIGO II Substage, Treatment Started in 2005



Test of Equality over Strata			
Test	Chi-Square	DF	Pr > Chi-Square
Log-rank	0.3552	1	0.5512
Wilcoxon	0.3629	1	0.5469
-2Log (LR)	0.3529	1	0.5525

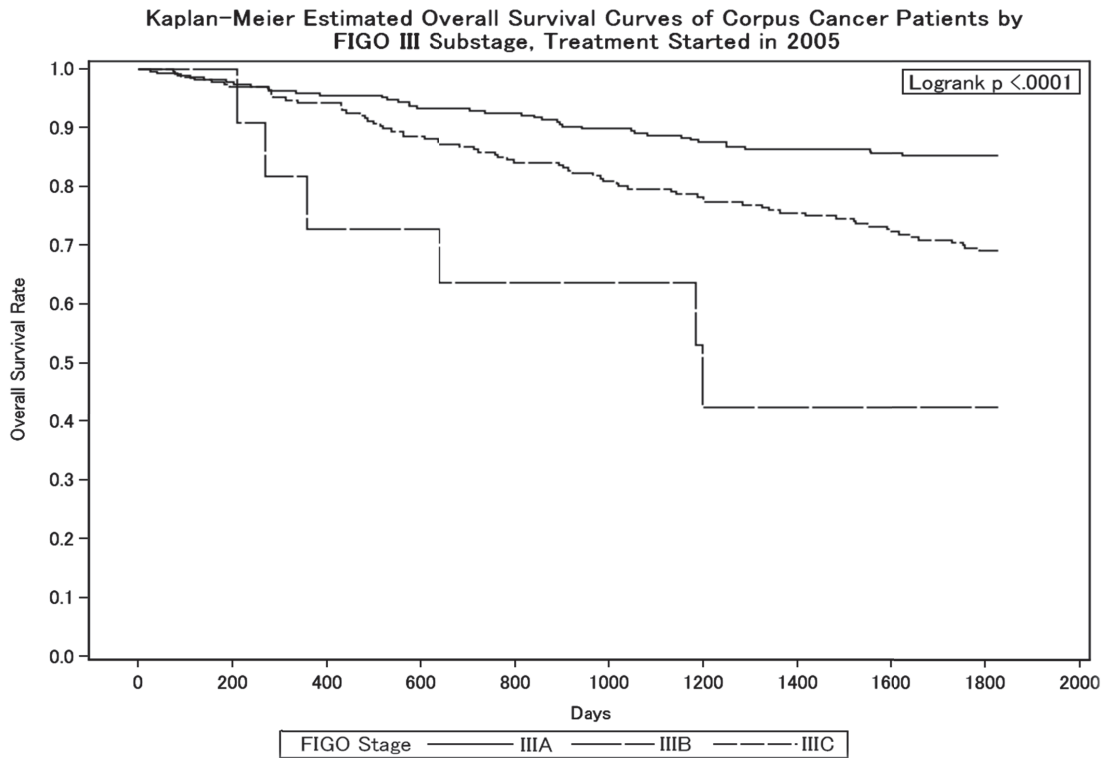
Figure 6.



Test of Equality over Strata			
Test	Chi-Square	DF	Pr > Chi-Square
Log-rank	14.5621	3	0.0022
Wilcoxon	14.9742	3	0.0018
-2Log (LR)	14.0576	3	0.0028

Adjustment for Multiple Comparisons for the Log-rank Test				
Strata Comparison		Chi-Square	p-Values	
Grade	Grade		Raw	Tukey-Kramer
Grade 1	Grade 2	6.7589	0.0093	0.0461
Grade 1	Grade 3	12.6100	0.0004	0.0022
Grade 1	Not Graded	12.7935	0.0003	0.0020
Grade 2	Grade 3	0.0479	0.8268	0.9963
Grade 2	Not Graded	0.0050	0.9435	0.9999
Grade 3	Not Graded	0.0435	0.8348	0.9968

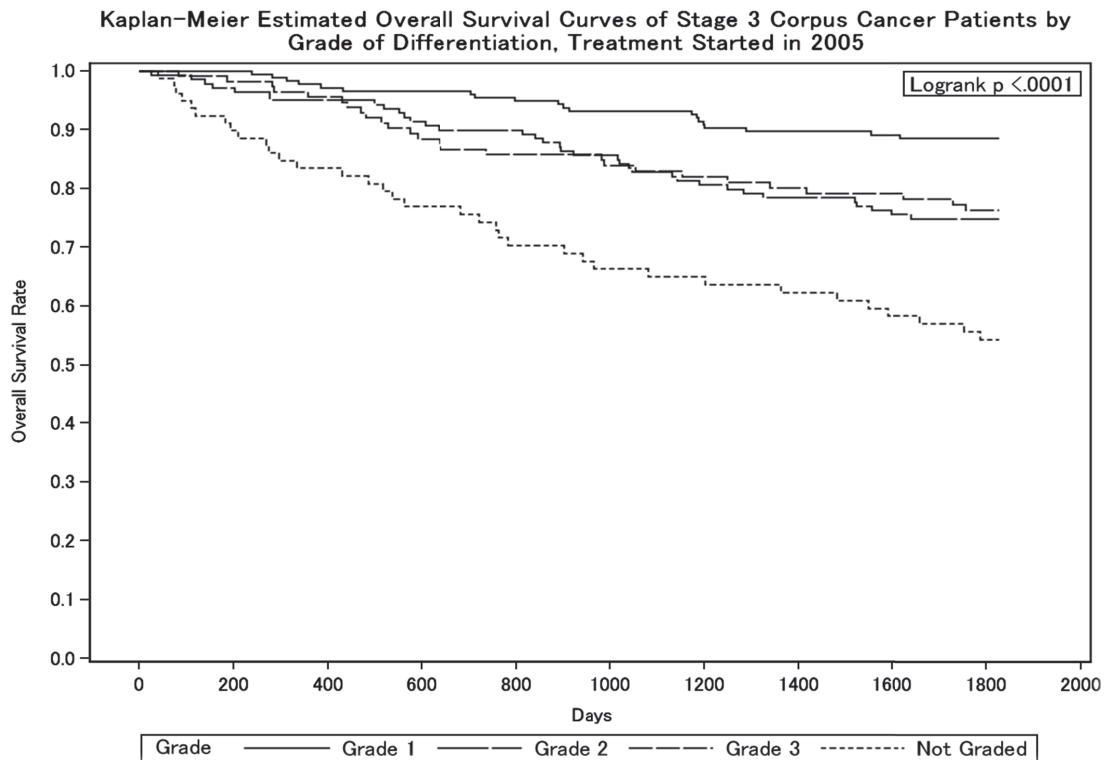
Figure 7.



Test of Equality over Strata			
Test	Chi-Square	DF	Pr > Chi-Square
Log-rank	27.2708	2	<.0001
Wilcoxon	26.1796	2	<.0001
-2Log (LR)	24.3128	2	<.0001

Adjustment for Multiple Comparisons for the Log-rank Test				
Strata Comparison		Chi-Square	p-Values	
FIGO Stage	FIGO Stage		Raw	Tukey-Kramer
IIIA	IIIB	24.8810	<.0001	<.0001
IIIA	IIIC	17.1094	<.0001	0.0001
IIIB	IIIC	7.5642	0.0060	0.0164

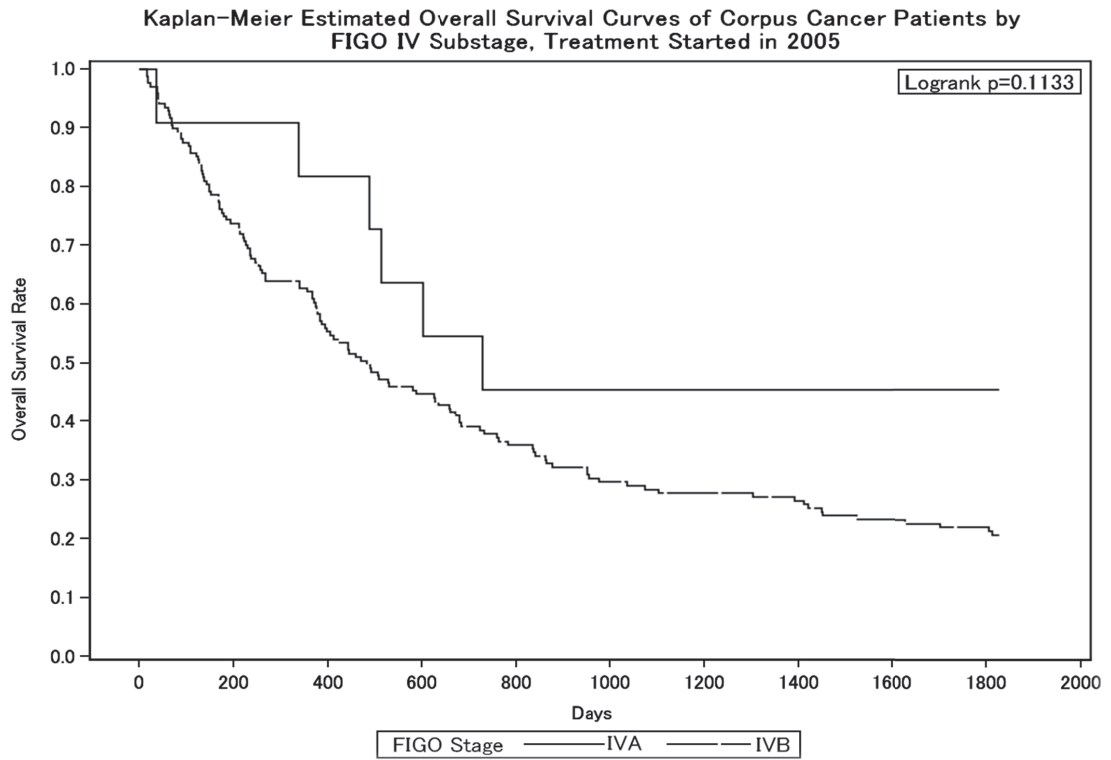
Figure 8.



Test of Equality over Strata			
Test	Chi-Square	DF	Pr > Chi-Square
Log-rank	40.6255	3	<.0001
Wilcoxon	41.6638	3	<.0001
-2Log (LR)	36.7012	3	<.0001

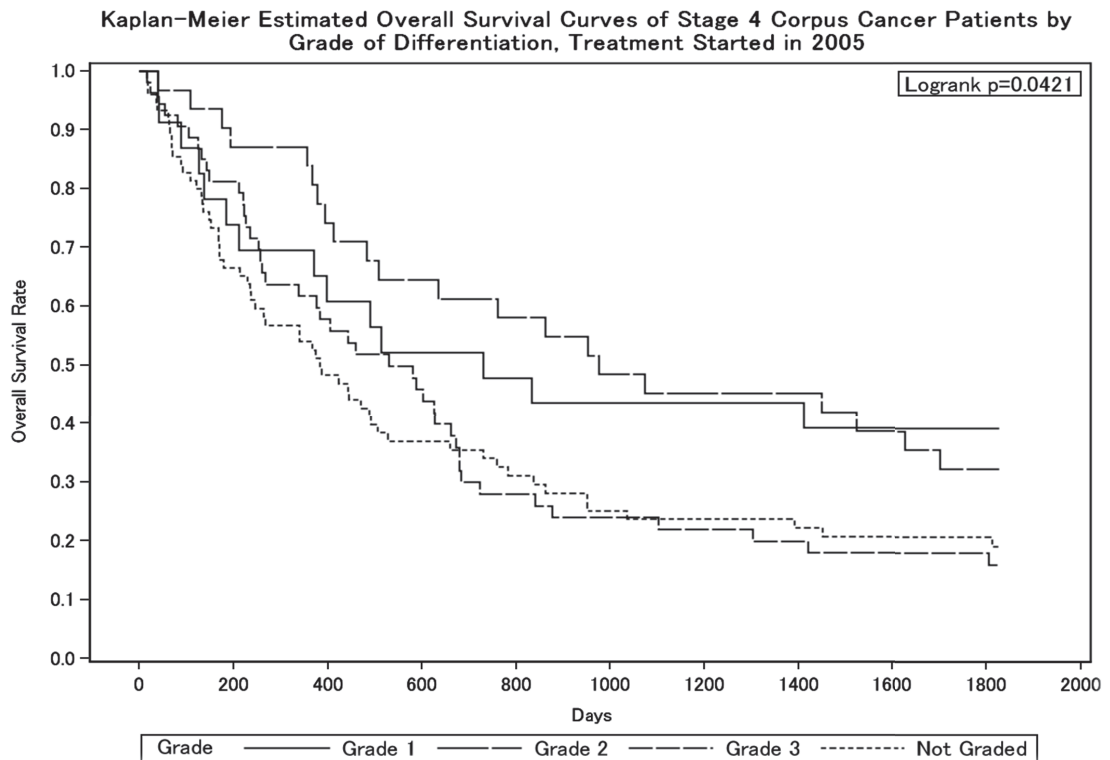
Adjustment for Multiple Comparisons for the Log-rank Test				
Strata Comparison		Chi-Square	p-Values	
Grade	Grade		Raw	Tukey-Kramer
Grade 1	Grade 2	9.3749	0.0022	0.0118
Grade 1	Grade 3	8.9842	0.0027	0.0145
Grade 1	Not Graded	37.5202	<.0001	<.0001
Grade 2	Grade 3	0.0779	0.7802	0.9924
Grade 2	Not Graded	6.8048	0.0091	0.0450
Grade 3	Not Graded	9.6972	0.0018	0.0100

Figure 9.



Test of Equality over Strata			
Test	Chi-Square	DF	Pr > Chi-Square
Log-rank	2.5069	1	0.1133
Wilcoxon	2.1806	1	0.1398
-2Log (LR)	3.9024	1	0.0482

Figure 10.



Test of Equality over Strata			
Test	Chi-Square	DF	Pr > Chi-Square
Log-rank	8.1981	3	0.0421
Wilcoxon	9.0208	3	0.0290
-2Log (LR)	12.3962	3	0.0061

Adjustment for Multiple Comparisons for the Log-rank Test				
Strata Comparison		Chi-Square	p-Values	
Grade	Grade		Raw	Tukey-Kramer
Grade 1	Grade 2	0.3380	0.5610	0.9377
Grade 1	Grade 3	2.5491	0.1104	0.3805
Grade 1	Not Graded	4.1809	0.0409	0.1717
Grade 2	Grade 3	3.7550	0.0527	0.2122
Grade 2	Not Graded	5.3384	0.0209	0.0956
Grade 3	Not Graded	0.2178	0.6407	0.9663



A		B	C	D	E	F	G	H	I	J	K
Institution		Total No. Treated	no description	Alive with no Evidence of the Disease	Alive with Carcinoma	Alive with or without Carcinoma Unknown	Died of Carcinoma	Died of Other Malignant Tumor	Died of Intercurrent Disease	Cause of Death Unknown	Lost to follow-up
	130081 TOKYO WOMENS MED. UNIV.	26	26	0	0	0	0	0	0	0	0
○	130085 KOSEI HOSP.	11	0	5	0	0	5	0	0	0	1
	130092 TEIKYO UNIV.	13	0	5	0	0	4	0	0	0	4
○	130095 NIHON UNIV.	15	0	10	0	1	3	0	0	0	1
○	130099 MUSASHINO RED CROSS HOSP.	24	0	7	3	1	11	0	0	0	2
	130112 MACHIDA MUNI. HOSP.	4	0	3	0	0	0	0	0	0	1
	130116 JIKEI UNIV. 3RD HOSP.	19	2	5	0	1	4	0	0	0	7
	130119 NIPPON MED. SCH. TAMA NAGAYAMA HOSP.	9	0	5	0	0	2	0	0	0	2
○	130122 TOKYO METRO. KOMAGOME HOSP.	20	0	8	6	1	4	0	1	0	0
	130124 KYOONDO HOSP.	9	0	4	0	0	2	0	0	0	3
○	130125 CANCER INST. HOSP.	64	0	33	5	0	26	0	0	0	0
	130135 TAMA-NAMBU CHIKI HOSP.	17	17	0	0	0	0	0	0	0	0
	140006 NIPPON MED. SCH. MUSASHI KOSUGI HOSP.	12	0	5	0	0	0	0	0	0	7
○	140008 KANTO ROSAI HOSP.	4	0	2	0	0	2	0	0	0	0
	140012 ST. MARIANNA UNIV.	22	11	0	0	0	5	0	0	0	6
	140016 YOKOHAMA ROSAI HOSP.	11	0	3	0	0	4	0	0	0	4
○	140017 SHOWA UNIV. FUJIGAOKA HOSP.	16	0	5	4	0	5	0	0	0	2
○	140020 KITAZATO UNIV.	25	0	16	0	0	8	0	0	0	1
○	140029 YOKOHAMA CITY UNIV.	24	0	12	1	2	8	0	0	0	1
	140030 YOKOHAMA MINAMI KYOSAI HOSP.	15	0	4	0	0	5	0	0	0	6
○	140035 YOKOHAMA MUNI. HOSP.	12	0	7	0	0	4	0	0	0	1
○	140037 ST. MARIANNA UNIV. YOKOHAMA CITY SEIBU HOSP.	5	0	3	0	0	2	0	0	0	0
	140038 YAMATO MUNI. HOSP.	11	11	0	0	0	0	0	0	0	0
○	140054 ISEHARA KYODO HO S P.	10	0	7	0	0	2	0	0	0	1
○	140055 TOKAI UNIV.	24	0	14	3	0	6	0	1	0	0
○	140059 KANAGAWA CANCER CENTER	26	0	18	0	0	7	1	0	0	0
○	140061 YOKOHAMA CITY UNIV. MED. CENTER	7	0	4	0	0	3	0	0	0	0
○	150002 YAMANASHI PREF. CENTRAL HOSP.	10	0	5	1	0	2	0	0	0	2
○	150006 UNIV. OF YAMANASHI	17	0	6	2	0	8	0	0	0	1
○	160006 SHINSHU UNIV.	17	0	6	1	1	6	0	0	0	3
	160014 MATSUMOTO MED. CENTER MATSUMOTO HOSP.	1	1	0	0	0	0	0	0	0	0
○	170006 FUJI CITY GENERAL HOSP.	5	0	5	0	0	0	0	0	0	0
○	170009 SHIZUOKA GENERAL HOSP.	22	0	11	5	0	4	0	0	0	2
	180001 NAGAOKA RED CROSS HOSP.	7	2	4	0	0	1	0	0	0	0
○	180009 NIIGATA UNIV.	34	0	20	0	0	12	0	0	0	2
○	180010 NIIGATA CANCER CENTER HOSP.	37	1	24	3	2	6	1	0	0	0
○	190001 TOYAMA UNIV.	6	0	3	1	0	2	0	0	0	0
○	190002 TOYAMA RED CROSS HOSP.	5	0	1	0	1	3	0	0	0	0
	190003 TOYAMA PREF. CENTRAL HOSP.	14	0	10	0	0	1	0	0	0	3
○	200001 KANAZAWA MED. UNIV.	5	0	3	0	0	2	0	0	0	0
○	200002 KANAZAWA MED. CENTER	6	0	4	1	1	0	0	0	0	0
	200004 KANAZAWA UNIV.	11	0	3	2	0	3	0	0	0	3
	210003 FUKUI UNIV.	6	6	0	0	0	0	0	0	0	0
○	210004 FUKUI RED CROSS HOSP.	12	0	7	2	0	2	0	1	0	0
○	220002 GIFU UNIV.	10	0	3	2	0	4	0	0	0	1
○	230014 RED CROSS NAGOYA DAIICHI HOSP.	16	0	8	2	0	6	0	0	0	0
	230024 NAGOYA MED. CENTER	12	12	0	0	0	0	0	0	0	0
○	230031 NAGOYA UNIV.	22	2	14	2	0	4	0	0	0	0
○	230034 NAGOYA CITY UNIV.	13	0	10	0	0	3	0	0	0	0
○	230035 FUJITA HEALTH UMIN.	11	0	6	1	0	4	0	0	0	0
	230040 AICHI MED. UNIV.	11	0	6	0	0	2	0	0	0	3
○	230052 AICHI CANCER CENTER	28	0	14	1	1	12	0	0	0	0
○	240002 MIE PREF. GENERAL MED. CENTER	4	0	3	1	0	0	0	0	0	0
	240003 YOKKAICHI MUNI. HOSP.	6	0	1	2	0	0	0	0	0	3
○	240015 ISE RED CROSS HOSP.	10	0	6	1	0	2	0	0	0	1
○	250001 OHTSU RED CROSS HOSP.	12	0	5	3	0	2	0	0	0	2
○	260002 KYOTO 2ND RED CROSS HOSP.	21	0	10	0	0	10	0	0	0	1
	260003 KYOTO PREF. UNIV. OF MED.	7	0	4	0	0	1	0	0	0	2
	260007 KYOTO 1ST RED CROSS HOSP.	11	11	0	0	0	0	0	0	0	0
○	260009 KYOTO UNIV.	21	0	10	1	0	8	0	0	0	2

	A	B	C	D	E	F	G	H	I	J	K
	Institution	Total No. Treated	no description	Alive with no Evidence of the Disease	Alive with Carcinoma	Alive with or without Carcinoma Unknown	Died of Carcinoma	Died of Other Malignant Tumor	Died of Intercurrent Disease	Cause of Death Unknown	Lost to follow-up
○	260017	SAISEIKAI KYOTO HOSP.	4	0	2	1	0	1	0	0	0
○	270003	KITANO HOSP.	14	0	6	0	0	6	0	0	2
	270007	OSAKA CITY GENERAL HOSP.	21	15	0	0	6	0	0	0	0
	270013	OSAKA POLICE HOSP.	7	0	1	2	0	2	0	0	2
○	270016	OSAKA CITY UNIV.	36	0	16	2	1	13	0	0	4
○	270035	OSAKA UNIV.	24	2	11	6	0	5	0	0	0
○	270041	OSAKA MED. COLL.	25	0	15	0	0	3	0	2	5
○	270042	KANSAI MED. UNIV.	9	0	5	1	0	2	0	0	1
○	270056	KINKI UNIV.	25	0	16	1	0	3	0	0	5
	270062	OSAKA ROUSAI HOSP.	13	0	7	0	0	3	0	0	3
○	270101	OSAKA MED. CENTER FOR CANCER AND CVD	34	0	14	5	1	14	0	0	0
	280001	KOBE UNIV.	13	6	0	0	5	0	0	0	2
	280010	KOBE MED. CENTER	5	2	0	0	1	0	0	0	1
○	280015	KANSAI ROSAI HOSP.	10	0	6	1	0	3	0	0	0
	280021	HYOGO MED. COLL.	17	17	0	0	0	0	0	0	0
	280028	TOYOOKA PUBLIC HOSP.	4	0	0	0	0	2	0	1	1
	280031	HIMEJI MED. CENTER	6	6	0	0	0	0	0	0	0
○	280033	HYOGO CANCER CENTER	28	0	13	3	0	11	0	0	1
	290003	NARA PREF. NARA HOSP.	13	9	0	0	0	4	0	0	0
○	290004	TENRI HOSP.	24	0	13	2	0	4	0	1	4
○	290007	NARA MED. UNIV.	17	0	11	0	0	3	0	0	3
	290009	MIMURO HOSP.	6	6	0	0	0	0	0	0	0
○	300002	JAPAN RED CROSS WAKAYAMA MED. CENTER	11	0	4	0	0	7	0	0	0
○	300003	WAKAYAMA MED. UNIV.	11	1	2	0	1	6	0	0	1
○	310001	TOTTORI PREF. CENTRAL HOSP.	4	0	2	1	0	1	0	0	0
○	310007	TOTTORI UNIV.	22	0	8	0	1	12	0	0	1
	320003	SHIMANE UNIV.	8	0	4	1	0	0	0	0	3
○	320004	SHIMANE PREF. CENTRAL HOSP.	10	0	1	3	0	6	0	0	0
○	330002	OKAYAMA RED CROSS HOSP.	10	0	2	1	0	5	0	0	2
○	330003	KAWASAKI HOSP.	1	0	0	0	0	1	0	0	0
○	330004	OKAYAMA SAISEIKAI GENERAL HOSP.	12	0	5	2	0	5	0	0	0
○	330006	OKAYAMA UNIV.	20	0	9	0	0	9	0	0	2
○	330008	KURASHIKI CENTRAL HOSP.	16	0	9	1	1	2	0	1	1
○	340001	FUKUYAMA MED. CENTER	9	0	4	0	0	5	0	0	0
	340002	ONOMICHI GENERAL HOSP.	8	0	2	1	0	0	0	0	5
○	340007	HIROSHIMA CITY HOSP.	15	0	5	2	0	4	1	0	3
	340008	HIROSHIMA RED CROSS HOSP.	8	0	4	1	0	1	0	0	2
	340010	HIROSHIMA CITY ASA HOSP.	8	0	4	0	1	1	0	0	2
○	340012	HIROSHIMA UNIV.	8	0	5	1	0	1	0	0	1
○	340014	HIROSHIMA PREF. HOSP.	8	0	6	0	0	2	0	0	0
○	340015	KURE MED. CENTER	11	0	5	0	0	4	0	0	2
	340017	KURE KYOSAI HOSP.	14	14	0	0	0	0	0	0	0
	340018	HIROSHIMA GENERAL HOSP.	5	0	2	0	0	1	0	0	2
	340031	HIGASHIHIROSHIMA MED. CENTER	3	3	0	0	0	0	0	0	0
	350003	TOKUYAMA CENTRAL HOSP.	12	12	0	0	0	0	0	0	0
	350008	YAMAGUCHI RED CROSS HOSP.	9	0	5	0	0	2	0	0	2
	350009	YAMAGUCHI UNIV.	9	0	4	0	0	3	0	0	2
	360003	TOKUSHIMA UNIV.	10	0	5	1	0	0	0	0	4
	360005	TOKUSHIMA PREF. CENTRAL HOSP.	4	0	2	0	1	0	0	0	1
	370001	TAKAMATSU RED CROSS HOSP.	8	0	2	1	0	2	1	0	2
○	380001	SHIKOKU CANCER CENTER	23	0	13	1	2	7	0	0	0
	380002	EHIME PREF. CENTRAL HOSP.	9	9	0	0	0	0	0	0	0
○	380006	EHIME UNIV.	9	0	5	1	0	2	0	0	1
○	390003	KOCHI HEALTH SCIENCES CENTER	11	0	7	1	0	2	0	0	1
○	390006	KOCHI UNIV.	13	0	8	1	0	2	0	0	2
○	400008	UNIV. OCCUPATIONAL & ENVIRONMENTAL HEALTH	11	0	2	0	0	5	2	1	1
○	400010	KYUSHU MED. CENTER	13	0	5	2	0	4	0	0	2
○	400013	FUKUOKA UNIV.	15	0	7	3	1	3	0	0	1
○	400014	FUKUOKA RED CROSS HOSP.	12	0	5	1	0	4	0	0	2
○	400020	KURUME UNIV.	24	0	16	1	1	5	0	0	1

A		B	C	D	E	F	G	H	I	J	K	
Institution		Total No. Treated	no description	Alive with no Evidence of the Disease	Alive with Carcinoma	Alive with or without Carcinoma Unknown	Died of Carcinoma	Died of Other Malignant Tumor	Died of Intercurrent Disease	Cause of Death Unknown	Lost to follow-up	
○	400040	KYUSHU CANCER CENTER	30	0	15	3	0	10	1	0	0	1
○	410005	SAGA UNIV.	13	0	4	1	0	6	0	0	0	2
○	420001	NAGASAKI MUNI. HOSP.	6	0	2	1	0	3	0	0	0	0
○	420002	NAGASAKI UNIV.	20	0	11	0	0	6	2	1	0	0
	420003	RED CROSS NAGASAKI ATOMIC BOMB HOSP.	4	0	1	0	0	1	0	0	0	2
○	420006	SASEBO KYOSAI HOSP.	4	0	2	0	1	1	0	0	0	0
	430001	KUMAMOTO MED. CENTER	12	0	5	0	0	3	0	0	0	4
○	430002	KUMAMOTO UNIV.	24	0	13	2	1	7	1	0	0	0
○	430003	KUMAMOTO CITY HOSP.	20	0	12	1	0	5	0	0	0	2
○	440002	OITA PREF. HOSP.	10	0	5	0	0	4	0	0	0	1
○	440005	OITA UNIV.	10	0	5	0	0	5	0	0	0	0
	450001	MIYAZAKI PREF. HOSP.	23	0	8	4	0	6	0	0	0	5
	460001	KAGOSHIMA UNIV.	27	0	8	0	0	3	0	0	0	16
	460004	KAGOSHIMA CITY HOSP.	28	0	13	2	0	2	0	1	1	9
○	470008	RYUKYU UNIV.	17	0	6	1	1	5	1	0	0	3
○	470010	OKINAWA PREF. CHUBU HOSP.	12	0	9	0	0	3	0	0	0	0
Total		2783	381	1148	165	43	693	13	14	5	321	

Table 1. No. of Patients by Stage and Age

FIGO Stage	Age	~19		20~29		30~39		40~49		50~59		60~69		70~79		80~		Total	
		No.	%	No.	%	No.	%	No.	%	No.	%	No.	%	No.	%	No.	%	No.	%
I	A	10	0.4	32	1.2	46	1.7	64	2.3	120	4.3	87	3.1	40	1.4	10	0.4	409	14.7
	B	0	0.0	0	0.0	2	0.1	11	0.4	16	0.6	3	0.1	0	0.0	0	0.0	32	1.2
	C(b)	3	0.1	18	0.7	43	1.6	85	3.1	146	5.3	61	2.2	34	1.2	7	0.3	397	14.3
	C(1)	0	0.0	3	0.1	1	0.0	8	0.3	7	0.3	7	0.3	4	0.1	0	0.0	30	1.1
	C(2)	0	0.0	6	0.2	11	0.4	16	0.6	38	1.4	29	1.0	8	0.3	5	0.2	113	4.1
	C(a)	3	0.1	7	0.3	22	0.8	33	1.2	52	1.9	20	0.7	9	0.3	1	0.0	147	5.3
	total	16	0.6	66	2.4	125	4.5	217	7.8	379	13.6	207	7.4	95	3.4	23	0.8	1128	40.5
II	A	0	0.0	1	0.0	1	0.0	7	0.3	9	0.3	3	0.1	3	0.1	0	0.0	24	0.9
	B	0	0.0	0	0.0	0	0.0	6	0.2	4	0.1	7	0.3	6	0.2	1	0.0	24	0.9
	C(b)	0	0.0	0	0.0	4	0.1	15	0.5	29	1.0	10	0.4	4	0.1	0	0.0	62	2.2
	C(1)	0	0.0	0	0.0	0	0.0	2	0.1	0	0.0	4	0.1	2	0.1	1	0.0	9	0.3
	C(2)	0	0.0	2	0.1	4	0.1	18	0.7	21	0.8	19	0.7	3	0.1	1	0.0	68	2.4
	C(a)	0	0.0	1	0.0	8	0.3	9	0.3	17	0.6	14	0.5	5	0.2	2	0.1	56	2.0
	total	0	0.0	4	0.1	17	0.6	57	2.1	80	2.9	57	2.1	23	0.8	5	0.2	243	8.7
III	A	0	0.0	1	0.0	2	0.1	9	0.3	9	0.3	5	0.2	1	0.0	1	0.0	28	1.0
	B	0	0.0	2	0.1	10	0.4	17	0.6	44	1.6	19	0.7	19	0.7	1	0.0	112	4.0
	C	3	0.1	11	0.4	38	1.4	123	4.4	265	9.5	220	7.9	128	4.6	27	1.0	815	29.3
	total	3	0.1	14	0.5	50	1.8	149	5.4	318	11.4	244	8.8	148	5.3	29	1.0	955	34.3
IV	2	0.1	2	0.1	10	0.4	27	1.0	66	2.4	63	2.3	37	1.3	12	0.4	219	7.9	
Neoadjuvant Chemotherapy	0	0.0	1	0.0	4	0.1	40	1.4	80	2.9	62	2.2	36	1.3	5	0.2	228	8.2	
Unknown	0	0.0	0	0.0	0	0.0	0	0.0	5	0.2	0	0.0	5	0.2	0	0.0	10	0.4	
Total	21	0.8	87	3.1	206	7.4	490	17.6	928	33.4	633	22.8	344	12.4	74	2.7	2783		

Table 2. 5-Year Results, Treatment Started in 2005

5-year result	No. of patients	%
Alive with no Evidence of the Disease	986	53.6
Alive with Carcinoma	146	7.9
Alive with or without Carcinoma Unknown	39	2.1
Died of Carcinoma	571	31.1
Died of Other Malignant Tumor	10	0.5
Died of Intercurrent Disease	11	0.6
Cause of Death Unknown	3	0.2
Lost to follow-up	73	4.0
Total	1839	

**Table 3. 5-Year Survival by Stage, Treatment Started in 2005**

FIGO Stage		Patients treated		5-year survival		Lost to follow-up
		No.		%		
I	A	261	743	93.3	91.6	32/743 (4.3%)
	B	19		100.0		
	C(b)	262		91.1		
	C(1)	19		89.5		
	C(2)	74		87.6		
	C(a)	108		90.2		
II	A	12	165	81.8	74.2	7/165 (4.2%)
	B	16		71.4		
	C(b)	46		77.9		
	C(1)	7		85.7		
	C(2)	43		73.4		
	C(a)	41		67.8		
III	A	18	634	82.4	49.6	22/634 (3.5%)
	B	78		69.8		
	C	538		45.6		
IV		143		38.4		6/143 (4.2%)
Neoadjuvant Chemotherapy		146		36.6		6/146 (4.1%)
Unknown		8		37.5		
Total		1839		66.9		

**Table 4. 5-Year Survival by Stage, Treatment Started in 2005  
Surface Epithelial-Stromal Tumors**

FIGO Stage		Patients treated		5-year survival	
		No.		%	
I	A	224	680	93.1	91.7
	B	19		100.0	
	C(b)	251		91.9	
	C(1)	18		88.9	
	C(2)	72		87.2	
	C(a)	96		90.2	
II	A	12	161	81.8	74.8
	B	15		76.9	
	C(b)	45		79.6	
	C(1)	7		85.7	
	C(2)	42		72.7	
	C(a)	40		67.0	
III	A	18	612	82.4	49.6
	B	77		69.4	
	C	517		45.6	
IV		137		38.6	
Neoadjuvant Chemotherapy		144		37.1	
Unknown		8		37.5	
Total		1742		66.5	

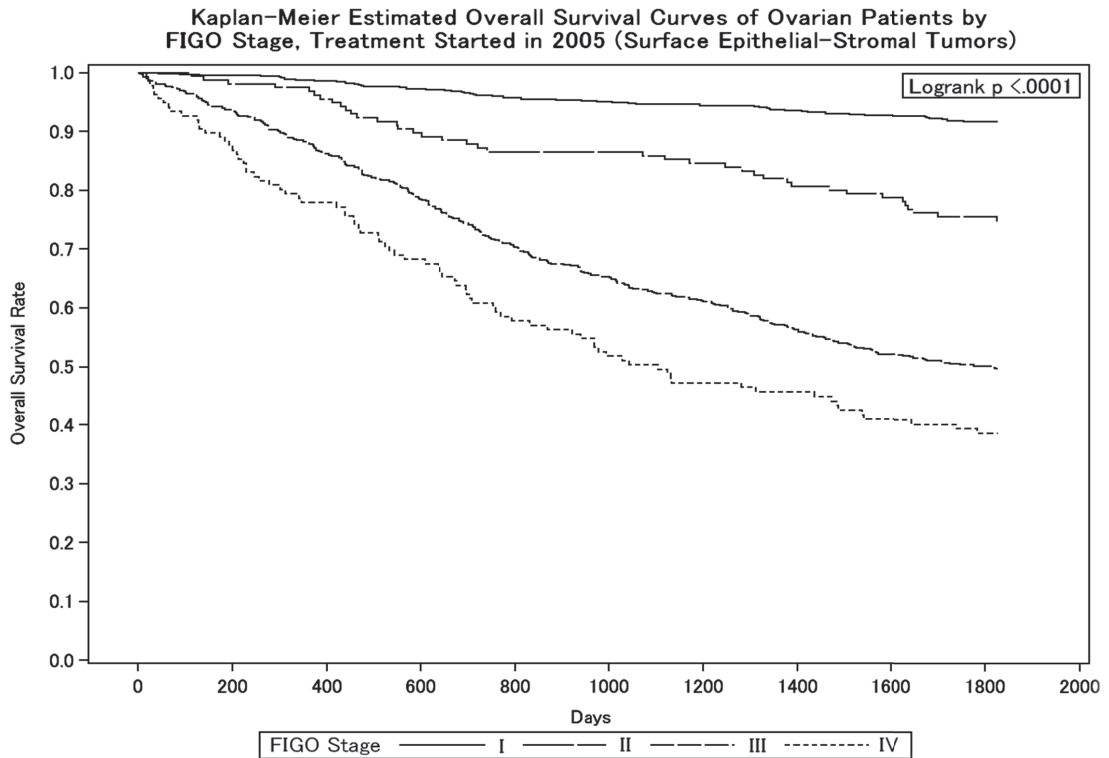
Table 5. 5-Year Survival by Histology, Treatment Started in 2005

Stage and Histological Type	FIGO Stage	Patients treated	5-year survival
		No.	%
Sex Cord/Stromal Tumors	I	8	87.5
	II	0	0.0
	III	2	50.0
	IV	0	0.0
	Neoadjuvant Chemotherapy	0	0.0
Germ Cell Tumors	I	50	91.8
	II	1	0.0
	III	16	56.3
	IV	4	50.0
	Neoadjuvant Chemotherapy	1	0.0
Immature Teratoma (G3)	I	4	100.0
	II	0	0.0
	III	0	0.0
	IV	1	0.0
	Neoadjuvant Chemotherapy	0	0.0
Dysgerminoma	I	11	90.9
	II	0	0.0
	III	2	100.0
	IV	0	0.0
	Neoadjuvant Chemotherapy	0	0.0
Yolk Sac Tumor	I	13	100.0
	II	0	0.0
	III	6	83.3
	IV	2	100.0
	Neoadjuvant Chemotherapy	1	0.0

Table 6. 5-Year Survival by Stage and Histological Type, Treatment Started in 2005

FIGO Stage	Histology	Patients treated		5-year survival
		No.	%	%
I	Serous	97	14.3	88.2
	Mucinous	152	22.4	91.2
	Endometrioid	150	22.1	93.9
	Clear	251	36.9	92.3
	Other	30	4.4	89.8
II	Serous	40	24.8	81.1
	Mucinous	14	8.7	69.2
	Endometrioid	42	26.1	78.0
	Clear	50	31.1	69.5
	Other	15	9.3	73.3
III	Serous	359	58.7	50.6
	Mucinous	36	5.9	41.7
	Endometrioid	73	11.9	68.1
	Clear	76	12.4	36.1
	Other	68	11.1	43.3
IV	Serous	79	57.7	38.6
	Mucinous	11	8.0	20.2
	Endometrioid	13	9.5	76.9
	Clear	17	12.4	35.9
	Other	17	12.4	22.1
Neoadjuvant Chemotherapy	Serous	105	72.9	36.2
	Mucinous	5	3.5	20.0
	Endometrioid	9	6.3	25.0
	Clear	5	3.5	60.0
	Other	20	13.9	45.0
Unknown	Serous	4	50.0	-
	Mucinous	2	25.0	-
	Endometrioid	1	12.5	-
	Clear	0	0.0	-
	Other	1	12.5	-

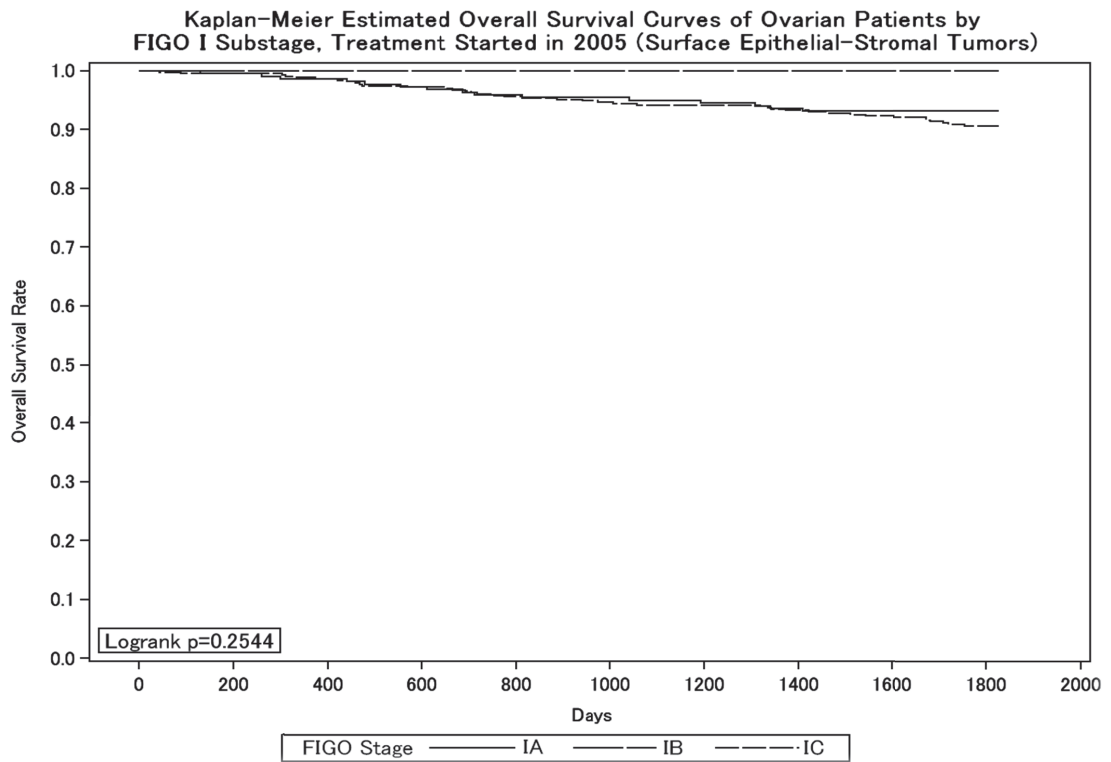
Figure 1.



Test of Equality over Strata			
Test	Chi-Square	DF	Pr > Chi-Square
Log-rank	352.5147	3	<.0001
Wilcoxon	348.1228	3	<.0001
-2Log (LR)	372.9581	3	<.0001

Adjustment for Multiple Comparisons for the Log-rank Test				
Strata Comparison		Chi-Square	p-Values	
FIGO Stage	FIGO Stage		Raw	Tukey-Kramer
I	II	133.6000	<.0001	<.0001
I	III	270.2000	<.0001	<.0001
I	IV	303.0000	<.0001	<.0001
II	III	125.1000	<.0001	<.0001
II	IV	48.9758	<.0001	<.0001
III	IV	51.3121	<.0001	<.0001

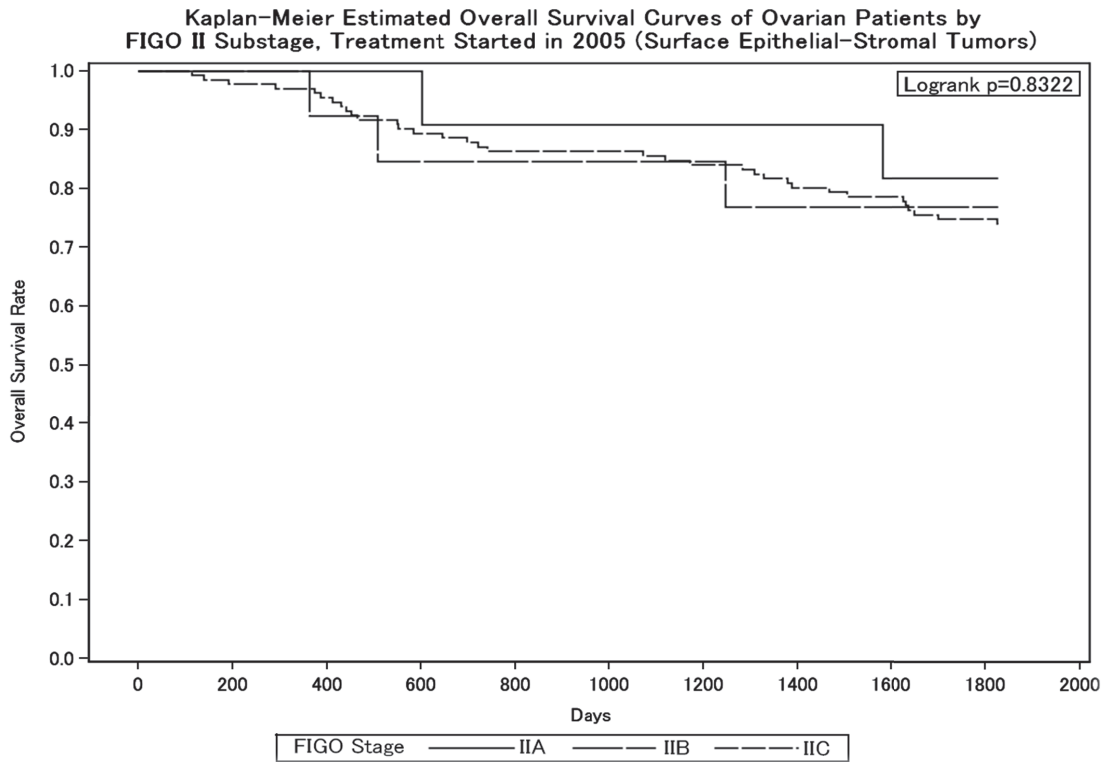
Figure 2.



Test of Equality over Strata			
Test	Chi-Square	DF	Pr > Chi-Square
Log-rank	2.7375	2	0.2544
Wilcoxon	2.6412	2	0.2670
-2Log (LR)	4.3750	2	0.1122

Adjustment for Multiple Comparisons for the Log-rank Test				
Strata Comparison		Chi-Square	p-Values	
FIGO Stage	FIGO Stage		Raw	Tukey-Kramer
IA	IB	0.1308	0.7176	0.9304
IA	IC	1.2225	0.2689	0.5105
IB	IC	2.4079	0.1207	0.2669

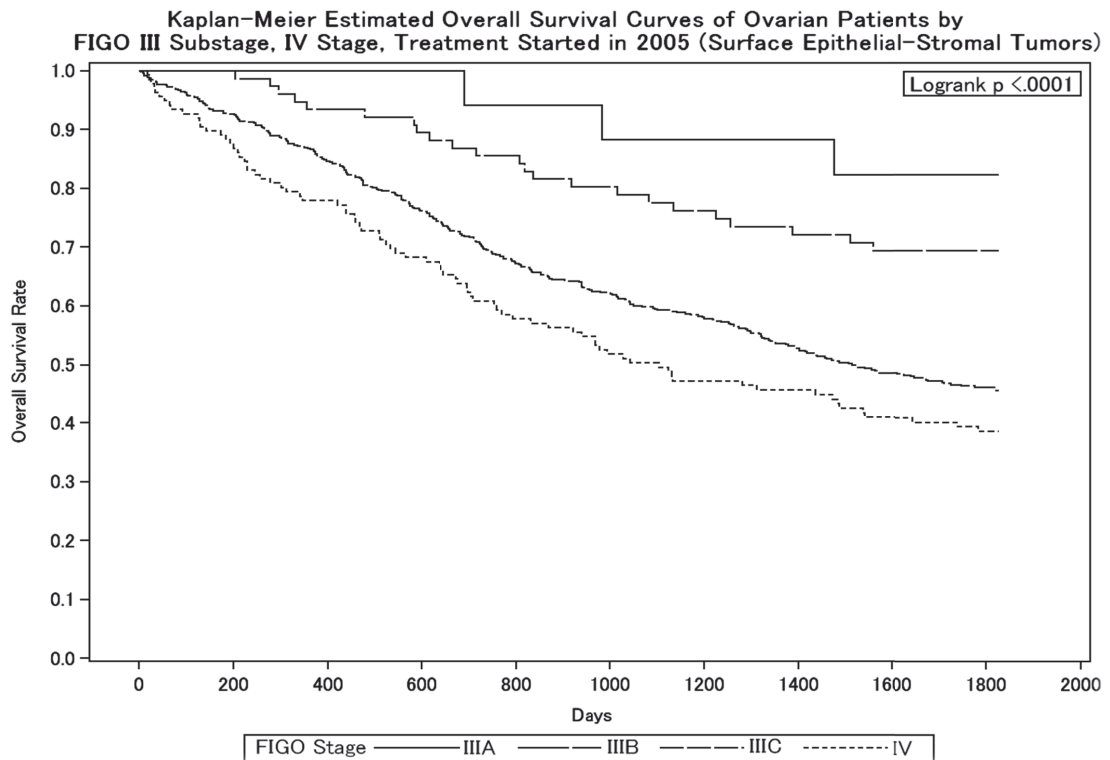
Figure 3.



Test of Equality over Strata			
Test	Chi-Square	DF	Pr > Chi-Square
Log-rank	0.3674	2	0.8322
Wilcoxon	0.3986	2	0.8193
-2Log (LR)	0.4110	2	0.8142

Adjustment for Multiple Comparisons for the Log-rank Test				
Strata Comparison		Chi-Square	p-Values	
FIGO Stage	FIGO Stage		Raw	Tukey-Kramer
IIA	IIB	0.0950	0.7579	0.9490
IIA	IIC	0.3506	0.5538	0.8244
IIB	IIC	0.1375	0.7108	0.9270

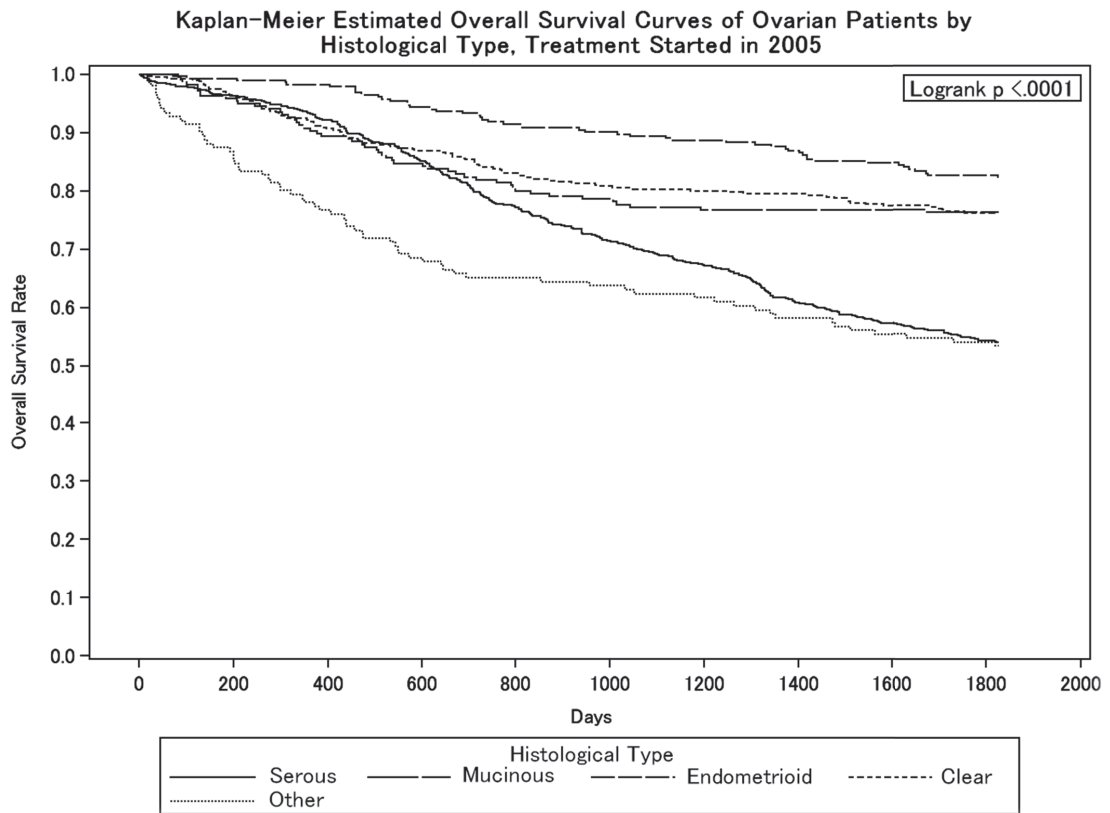
Figure 4.



Test of Equality over Strata			
Test	Chi-Square	DF	Pr > Chi-Square
Log-rank	26.6527	3	<.0001
Wilcoxon	28.2885	3	<.0001
-2Log (LR)	32.8424	3	<.0001

Adjustment for Multiple Comparisons for the Log-rank Test				
Strata Comparison		Chi-Square	p-Values	
FIGO Stage	FIGO Stage		Raw	Tukey-Kramer
IIIA	IIIB	4.0621	0.0439	0.1822
IIIA	IIIC	4.2506	0.0392	0.1658
IIIA	IV	13.0228	0.0003	0.0017
IIIB	IIIC	7.1772	0.0074	0.0371
IIIB	IV	18.4588	<.0001	0.0001
IIIC	IV	0.2825	0.5951	0.9514

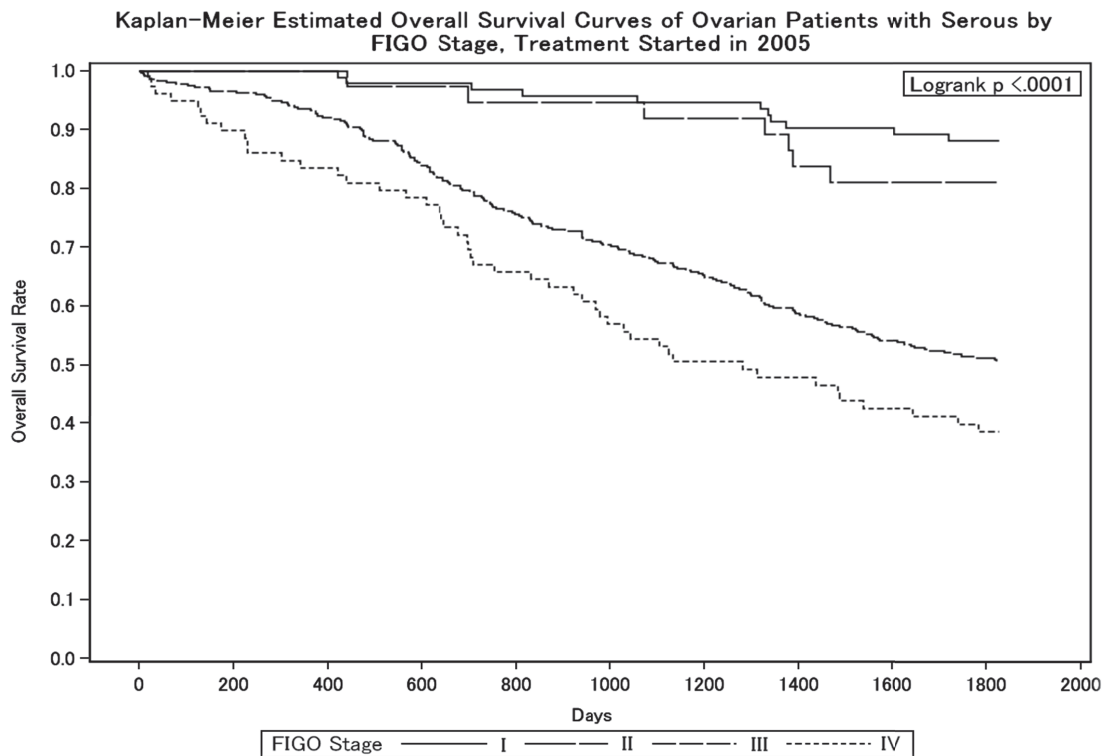
Figure 5.



Test of Equality over Strata			
Test	Chi-Square	DF	Pr > Chi-Square
Log-rank	110.1478	4	<.0001
Wilcoxon	103.3856	4	<.0001
-2Log (LR)	116.3876	4	<.0001

Adjustment for Multiple Comparisons for the Log-rank Test				
Strata Comparison		Chi-Square	p-Values	
Histological Type	Histological Type		Raw	Tukey-Kramer
Serous	Mucinous	52.6366	<.0001	<.0001
Serous	Endometrioid	74.9992	<.0001	<.0001
Serous	Clear	54.8911	<.0001	<.0001
Serous	Other	21.1128	<.0001	<.0001
Mucinous	Endometrioid	6.8585	0.0088	0.067
Mucinous	Clear	2.3173	0.1279	0.5479
Mucinous	Other	21.9324	<.0001	<.0001
Endometrioid	Clear	0.7173	0.397	0.9158
Endometrioid	Other	50.9041	<.0001	<.0001
Clear	Other	31.2943	<.0001	<.0001

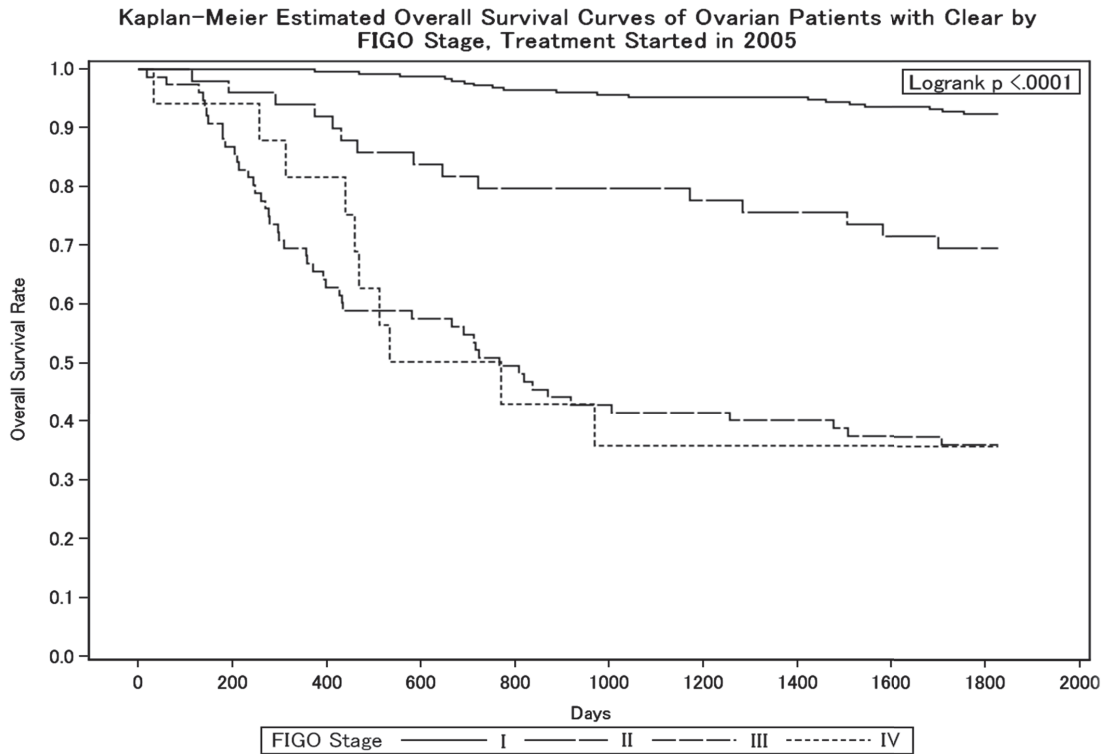
Figure 6.



Test of Equality over Strata			
Test	Chi-Square	DF	Pr > Chi-Square
Log-rank	60.6753	3	<.0001
Wilcoxon	61.5631	3	<.0001
-2Log (LR)	71.9963	3	<.0001

Adjustment for Multiple Comparisons for the Log-rank Test				
Strata Comparison		Chi-Square	p-Values	
FIGO Stage	FIGO Stage		Raw	Tukey-Kramer
I	II	10.8339	0.0010	0.0055
I	III	30.7205	<.0001	<.0001
I	IV	47.5531	<.0001	<.0001
II	III	18.5336	<.0001	<.0001
II	IV	23.6049	<.0001	<.0001
III	IV	0.8027	0.3703	0.8070

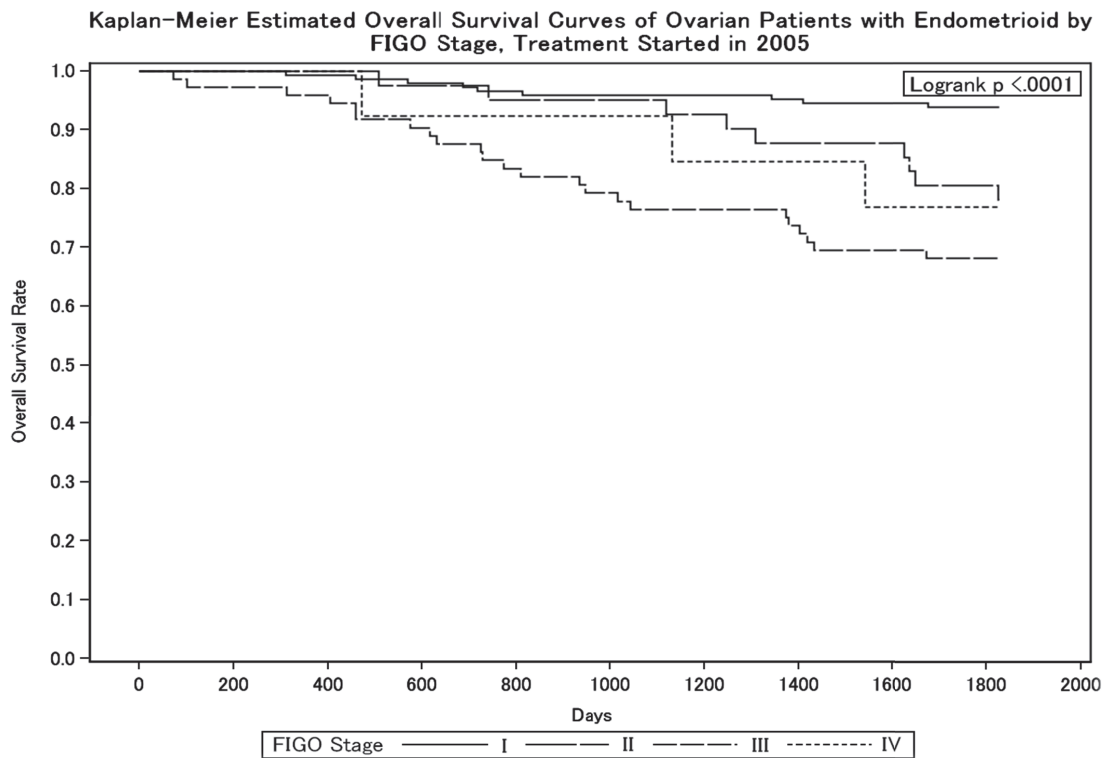
Figure 7.



Test of Equality over Strata			
Test	Chi-Square	DF	Pr > Chi-Square
Log-rank	161.2076	3	<.0001
Wilcoxon	164.2210	3	<.0001
-2Log (LR)	129.8522	3	<.0001

Adjustment for Multiple Comparisons for the Log-rank Test				
Strata Comparison		Chi-Square	p-Values	
FIGO Stage	FIGO Stage		Raw	Tukey-Kramer
I	II	56.4127	<.0001	<.0001
I	III	146.8000	<.0001	<.0001
I	IV	117.2000	<.0001	<.0001
II	III	43.9880	<.0001	<.0001
II	IV	1.0550	0.3044	0.7335
III	IV	58.4176	<.0001	<.0001

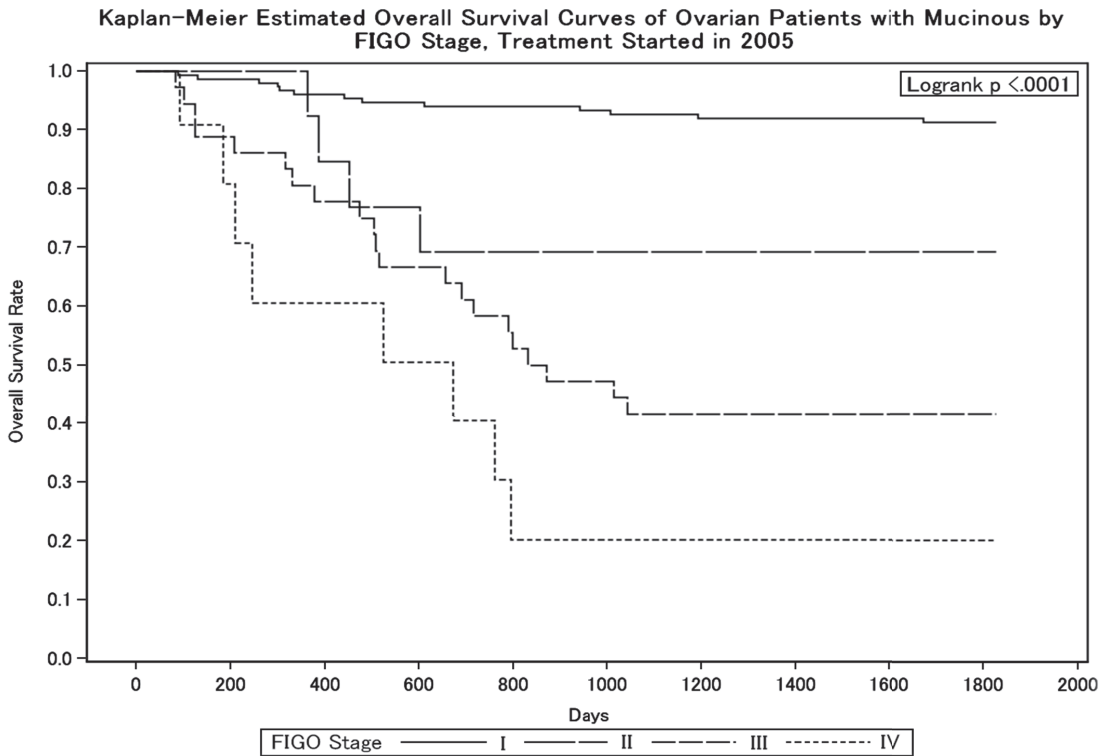
Figure 8.



Test of Equality over Strata			
Test	Chi-Square	DF	Pr > Chi-Square
Log-rank	26.7433	3	<.0001
Wilcoxon	26.7814	3	<.0001
-2Log (LR)	25.6765	3	<.0001

Adjustment for Multiple Comparisons for the Log-rank Test				
Strata Comparison		Chi-Square	p-Values	
FIGO Stage	FIGO Stage		Raw	Tukey-Kramer
I	II	13.6942	0.0002	0.0012
I	III	26.6735	<.0001	<.0001
I	IV	18.7909	<.0001	<.0001
II	III	6.3647	0.0116	0.0565
II	IV	0.2153	0.6426	0.9669
III	IV	12.5609	0.0004	0.0022

Figure 9.



Test of Equality over Strata			
Test	Chi-Square	DF	Pr > Chi-Square
Log-rank	80.8879	3	<.0001
Wilcoxon	77.7458	3	<.0001
-2Log (LR)	64.3471	3	<.0001

Adjustment for Multiple Comparisons for the Log-rank Test				
Strata Comparison		Chi-Square	p-Values	
FIGO Stage	FIGO Stage		Raw	Tukey-Kramer
I	II	39.2875	<.0001	<.0001
I	III	59.1209	<.0001	<.0001
I	IV	74.6638	<.0001	<.0001
II	III	20.0226	<.0001	<.0001
II	IV	6.9753	0.0083	0.0412
III	IV	8.7596	0.0031	0.0163

卵巢境界悪性腫瘍治療成績

Statement for the Year 2005, Inclusive, Borderline Ovarian Tumor

Table A. 5-Year Results, Stage I-IV

	A	B	C	D	E	F	G	H	I	J	K
	Institution	Total No. Treated	no description	Alive with no Evidence of the Disease	Alive with Carcinoma	Alive with or without Carcinoma Unknown	Died of Carcinoma	Died of Other Malignant Tumor	Died of Intercurrent Disease	Cause of Death Unknown	Lost to follow-up
	010022 JR SAPPORO HOSP.	1	1	0	0	0	0	0	0	0	0
	010025 SAPPORO MED. UNIV.	4	0	2	0	0	0	0	0	0	2
○	010027 HOKKAIDO UNIV.	7	0	5	0	0	1	0	0	0	1
○	010028 KKR SAPPORO MED. CENTER	2	0	2	0	0	0	0	0	0	0
○	010040 ASAHIKAWA MED. COLL.	2	0	2	0	0	0	0	0	0	0
	020012 HIROSAKI UNIV.	2	1	0	0	0	0	1	0	0	0
○	020017 MISAWA CITY HOSP.	1	0	1	0	0	0	0	0	0	0
○	040004 TOHOKU UNIV.	5	0	5	0	0	0	0	0	0	0
	040013 SENDAI MED. CENTER	3	0	1	0	0	0	0	0	0	2
○	050001 AKITA RED CROSS HOSP.	1	0	1	0	0	0	0	0	0	0
	050003 AKITA UNIV.	2	0	0	0	0	0	0	0	1	1
	060005 YAMAGATA UNIV.	3	1	2	0	0	0	0	0	0	0
○	070003 FUKUSHIMA MED. UNIV.	5	0	5	0	0	0	0	0	0	0
	080003 KASUMIGAURA MED. CENTER	5	5	0	0	0	0	0	0	0	0
○	080006 TSUKUBA GAKUEN HOSP.	1	0	1	0	0	0	0	0	0	0
○	080007 TSUKUBA UNIV.	8	0	7	0	0	0	0	0	0	1
	080017 MITO MED. CENTER	4	4	0	0	0	0	0	0	0	0
	080021 HITACHI GENERAL HOSP.	5	5	0	0	0	0	0	0	0	0
○	080031 TSUKUBA MED. CENTER	2	0	2	0	0	0	0	0	0	0
	090005 SAISEIKAI UTSUNOMIYA HOSP.	2	0	0	0	0	0	0	0	0	2
○	090011 ASHIKAGA RED CROSS HOSP.	6	0	5	0	0	1	0	0	0	0
	090015 JICHI MED. UNIV.	7	0	0	0	0	0	0	0	0	7
○	100022 GUNMA PREF. CANCER CENTER	1	0	1	0	0	0	0	0	0	0
○	110008 SAITAMA SHAKAI HOKEN HOSP.	3	0	3	0	0	0	0	0	0	0
	110014 KOSHIGAYA MUNI. HOSP.	7	4	3	0	0	0	0	0	0	0
	110022 SAITAMA MED. CENTER	16	16	0	0	0	0	0	0	0	0
	110023 SAITAMA NATIONAL HOSP.	1	1	0	0	0	0	0	0	0	0
○	110027 NATIONAL DEFENSE MED. COLL.	9	0	6	2	0	1	0	0	0	0
○	110030 SAITAMA CANCER CENTER	5	0	4	0	0	0	0	0	0	1
	120012 MATSUDO CITY HOSP.	2	0	1	0	0	0	0	0	0	1
○	120015 TOKYO DENTAL COLL. ICHIKAWA GENERAL HOSP.	3	0	3	0	0	0	0	0	0	0
	120021 JIKEI UNIV. KASHIWA HOSP.	12	12	0	0	0	0	0	0	0	0
○	120023 JUNTENDO UNIV. URAYASU HOSP.	2	0	2	0	0	0	0	0	0	0
	120029 ASAHI CENTRAL HOSP.	4	0	2	1	0	0	0	0	0	1
	120035 KAMEDA MED. CENTER	5	0	2	1	0	0	0	0	0	2
○	130005 MITUI MEMORIAL HOSP.	7	0	6	0	0	0	0	0	0	1
○	130009 NATIONAL CANCER CENTER	5	0	4	0	0	0	0	0	0	1
	130024 TOKYO MED. DENT. UNIV.	7	7	0	0	0	0	0	0	0	0
	130025 NIPPON MED. SCH.	2	0	1	0	0	0	0	0	0	1
○	130026 TOKYO UNIV.	5	0	5	0	0	0	0	0	0	0
○	130029 TOKYO WOMENS MED. UNIV. MED. CENTER EAST	1	0	1	0	0	0	0	0	0	0
	130034 JIKEI UNIV. KATSUSHIKA MED. CENTER	3	3	0	0	0	0	0	0	0	0
	130046 SHOWA UNIV.	7	0	4	0	1	0	0	0	0	2
○	130050 TOHO UNIV. OMORI HOSP.	2	0	2	0	0	0	0	0	0	0
	130055 RED CROSS MED. CENTER	3	0	2	0	0	0	0	0	0	1
	130061 TOKYO MED. CENTER	5	1	3	0	0	0	0	0	0	1
	130077 KEIO UNIV.	6	0	4	0	0	0	0	0	0	2
	130081 TOKYO WOMENS MED. UNIV.	4	4	0	0	0	0	0	0	0	0
	130085 KOSEI HOSP.	2	0	1	0	0	0	0	0	0	1
	130092 TEIKYO UNIV.	10	0	6	0	0	1	0	0	0	3
○	130095 NIHON UNIV.	9	0	8	0	0	0	0	0	0	1
○	130099 MUSASHINO RED CROSS HOSP.	6	0	6	0	0	0	0	0	0	0

A		B	C	D	E	F	G	H	I	J	K
Institution		Total No. Treated	no description	Alive with no Evidence of the Disease	Alive with Carcinoma	Alive with or without Carcinoma Unknown	Died of Carcinoma	Died of Other Malignant Tumor	Died of Intercurrent Disease	Cause of Death Unknown	Lost to follow-up
130112	MACHIDA MUNI. HOSP.	4	0	2	0	0	0	0	0	0	2
130116	JIKEI UNIV. 3RD HOSP.	8	3	3	0	0	0	0	0	0	2
130119	NIPPON MED. SCH. TAMA NAGAYAMA HOSP.	4	0	4	0	0	0	0	0	0	0
130122	TOKYO METRO. KOMAGOME HOSP.	14	0	13	0	0	0	1	0	0	0
130125	CANCER INST. HOSP.	13	0	13	0	0	0	0	0	0	0
130135	TAMA-NAMBU CHIIKI HOSP.	1	1	0	0	0	0	0	0	0	0
140001	KAWASAKI MUNI. HOSP.	1	1	0	0	0	0	0	0	0	0
140006	NIPPON MED. SCH. MUSASHI KOSUGI HOSP.	3	0	1	0	0	0	0	0	0	2
140008	KANTO ROSAI HOSP.	1	0	1	0	0	0	0	0	0	0
140012	ST. MARIANNA UNIV.	7	7	0	0	0	0	0	0	0	0
140016	YOKOHAMA ROSAI HOSP.	4	0	3	0	0	0	0	0	0	1
140017	SHOWA UNIV. FUJIGAOKA HOSP.	4	0	2	0	0	0	0	0	0	2
140020	KITAZATO UNIV.	12	0	6	0	0	0	0	0	0	6
140029	YOKOHAMA CITY UNIV.	7	0	7	0	0	0	0	0	0	0
140030	YOKOHAMA MINAMI KYOSAI HOSP.	4	0	3	0	0	0	0	0	0	1
140035	YOKOHAMA MUNI. HOSP.	4	0	4	0	0	0	0	0	0	0
140037	ST. MARIANNA UNIV. YOKOHAMA CITY SEIBU HOSP.	4	0	3	1	0	0	0	0	0	0
140054	ISEHARA KYODO HO S. P.	1	0	1	0	0	0	0	0	0	0
140059	KANAGAWA CANCER CENTER	3	0	3	0	0	0	0	0	0	0
140061	YOKOHAMA CITY UNIV. MED. CENTER	5	0	4	0	0	0	0	0	0	1
150002	YAMANASHI PREF. CENTRAL HOSP.	4	0	2	1	0	1	0	0	0	0
150006	UNIV. OF YAMANASHI	2	0	1	0	0	0	0	0	0	1
160006	SHINSHU UNIV.	9	0	4	0	0	0	0	0	0	5
170006	FUJI CITY GENERAL HOSP.	3	0	2	0	0	0	0	0	0	1
170009	SHIZUOKA GENERAL HOSP.	9	0	8	0	0	0	0	0	0	1
180009	NIIGATA UNIV.	5	0	4	0	0	0	0	0	0	1
180010	NIIGATA CANCER CENTER HOSP.	2	0	2	0	0	0	0	0	0	0
190002	TOYAMA RED CROSS HOSP.	5	0	5	0	0	0	0	0	0	0
190003	TOYAMA PREF. CENTRAL HOSP.	2	0	1	0	0	0	0	0	0	1
200001	KANAZAWA MED. UNIV.	4	0	2	0	0	0	0	0	0	2
200004	KANAZAWA UNIV.	3	0	2	0	0	0	0	0	0	1
220002	GIFU UNIV.	2	0	2	0	0	0	0	0	0	0
230014	RED CROSS NAGOYA DAIICHI HOSP.	9	0	8	0	0	0	1	0	0	0
230024	NAGOYA MED. CENTER	2	2	0	0	0	0	0	0	0	0
230031	NAGOYA UNIV.	8	0	8	0	0	0	0	0	0	0
230034	NAGOYA CITY UNIV.	4	0	2	0	1	0	1	0	0	0
230035	FUJITA HEALTH UMIN.	1	0	1	0	0	0	0	0	0	0
230040	AICHI MED. UNIV.	4	0	2	0	0	0	0	0	0	2
230052	AICHI CANCER CENTER	4	0	4	0	0	0	0	0	0	0
240002	MIE PREF. GENERAL MED. CENTER	2	0	1	0	0	0	0	0	0	1
240003	YOKKAICHI MUNI. HOSP.	5	0	4	0	0	0	0	0	0	1
240015	ISE RED CROSS HOSP.	3	1	2	0	0	0	0	0	0	0
250001	OHTSU RED CROSS HOSP.	3	0	3	0	0	0	0	0	0	0
260002	KYOTO 2ND RED CROSS HOSP.	5	0	3	0	0	0	0	0	0	2
260003	KYOTO PREF. UNIV. OF MED.	2	0	1	0	0	0	0	0	0	1
260007	KYOTO 1ST RED CROSS HOSP.	4	4	0	0	0	0	0	0	0	0
260009	KYOTO UNIV.	3	0	3	0	0	0	0	0	0	0
270003	KITANO HOSP.	3	0	1	0	0	1	0	0	0	1
270007	OSAKA CITY GENERAL HOSP.	7	7	0	0	0	0	0	0	0	0
270013	OSAKA POLICE HOSP.	6	0	3	0	0	0	0	0	0	3
270016	OSAKA CITY UNIV.	11	0	9	0	0	0	0	0	0	2
270041	OSAKA MED. COLL.	4	0	2	0	0	0	0	0	0	2
270042	KANSAI MED. UNIV.	2	0	1	0	0	0	1	0	0	0
270062	OSAKA ROUSAI HOSP.	6	0	3	0	0	0	0	0	2	1
270101	OSAKA MED. CENTER FOR CANCER AND CV/D	3	0	1	0	0	0	0	0	0	2
280001	KOBE UNIV.	1	1	0	0	0	0	0	0	0	0
280010	KOBE MED. CENTER	1	0	1	0	0	0	0	0	0	0

A		B	C	D	E	F	G	H	I	J	K
Institution		Total No. Treated	no description	Alive with no Evidence of the Disease	Alive with Carcinoma	Alive with or without Carcinoma Unknown	Died of Carcinoma	Died of Other Malignant Tumor	Died of Intercurrent Disease	Cause of Death Unknown	Lost to follow-up
○	280015	KANSAI ROSAI HOSP.	3	0	3	0	0	0	0	0	0
	280031	HIMEJI MED. CENTER	1	1	0	0	0	0	0	0	0
○	280033	HYOGO CANCER CENTER	5	0	4	0	0	0	0	0	1
	290003	NARA PREF. NARA HOSP.	1	1	0	0	0	0	0	0	0
	290004	TENRI HOSP.	3	0	2	0	0	0	0	0	1
○	290007	NARA MED. UNIV.	1	0	1	0	0	0	0	0	0
○	300002	JAPAN RED CROSS WAKAYAMA MED. CENTER	4	0	2	0	0	2	0	0	0
	300003	WAKAYAMA MED. UNIV.	5	5	0	0	0	0	0	0	0
○	310001	TOTTORI PREF. CENTRAL HOSP.	1	0	1	0	0	0	0	0	0
○	310007	TOTTORI UNIV.	5	0	5	0	0	0	0	0	0
	320003	SHIMANE UNIV.	2	0	1	0	0	0	0	0	1
○	320004	SHIMANE PREF. CENTRAL HOSP.	1	0	1	0	0	0	0	0	0
	330003	KAWASAKI HOSP.	1	0	0	0	0	0	0	0	1
○	330004	OKAYAMA SAISEIKAI GENERAL HOSP.	1	0	0	0	1	0	0	0	0
	330008	KURASHIKI CENTRAL HOSP.	8	0	6	0	0	0	0	0	2
○	340001	FUKUYAMA MED. CENTER	2	0	2	0	0	0	0	0	0
	340002	ONOMICHI GENERAL HOSP.	5	1	3	0	0	0	0	0	1
○	340007	HIROSHIMA CITY HOSP.	1	0	1	0	0	0	0	0	0
○	340010	HIROSHIMA CITY ASA HOSP.	3	0	3	0	0	0	0	0	0
○	340012	HIROSHIMA UNIV.	1	0	1	0	0	0	0	0	0
○	340014	HIROSHIMA PREF. HOSP.	6	0	6	0	0	0	0	0	0
	340015	KURE MED. CENTER	4	0	2	0	0	0	0	0	2
	340017	KURE KYOSAI HOSP.	5	5	0	0	0	0	0	0	0
	340018	HIROSHIMA GENERAL HOSP.	1	0	0	0	0	0	0	0	1
	350003	TOKUYAMA CENTRAL HOSP.	2	2	0	0	0	0	0	0	0
	350008	YAMAGUCHI RED CROSS HOSP.	3	0	2	0	0	0	0	0	1
○	350009	YAMAGUCHI UNIV.	2	0	2	0	0	0	0	0	0
	360003	TOKUSHIMA UNIV.	6	0	2	0	0	0	0	0	4
○	370001	TAKAMATSU RED CROSS HOSP.	3	0	3	0	0	0	0	0	0
	380001	SHIKOKU CANCER CENTER	9	0	4	0	0	3	0	0	2
○	380006	EHIME UNIV.	1	0	0	0	1	0	0	0	0
	390003	KOCHI HEALTH SCIENCES CENTER	1	0	0	0	0	0	0	0	1
	390006	KOCHI UNIV.	4	0	2	0	0	0	0	0	2
○	400008	UNIV. OCCUPATIONAL & ENVIRONMENTAL HEALTH	6	0	5	0	0	1	0	0	0
○	400010	KYUSHU MED. CENTER	1	0	1	0	0	0	0	0	0
○	400013	FUKUOKA UNIV.	12	0	11	0	0	1	0	0	0
○	400014	FUKUOKA RED CROSS HOSP.	4	0	3	1	0	0	0	0	0
○	400020	KURUME UNIV.	4	0	4	0	0	0	0	0	0
○	400040	KYUSHU CANCER CENTER	5	0	5	0	0	0	0	0	0
	410005	SAGA UNIV.	4	0	3	0	0	0	0	0	1
○	420001	NAGASAKI MUNI. HOSP.	1	0	1	0	0	0	0	0	0
○	420002	NAGASAKI UNIV.	15	0	13	0	0	0	0	0	2
	420003	RED CROSS NAGASAKI ATOMIC BOMB HOSP.	1	0	0	0	0	0	0	0	1
○	420006	SASEBO KYOSAI HOSP.	5	0	5	0	0	0	0	0	0
	430001	KUMAMOTO MED. CENTER	6	0	4	0	0	0	0	0	2
○	430002	KUMAMOTO UNIV.	7	0	6	0	0	0	0	0	1
	430003	KUMAMOTO CITY HOSP.	6	0	3	0	0	1	0	0	2
	440002	OITA PREF. HOSP.	2	0	0	0	0	1	0	0	1
○	440005	OITA UNIV.	2	0	2	0	0	0	0	0	0
	450001	MIYAZAKI PREF. HOSP.	6	0	3	0	0	0	0	0	3
	460001	KAGOSHIMA UNIV.	11	0	2	0	0	1	0	0	8
	460004	KAGOSHIMA CITY HOSP.	9	0	4	0	0	0	0	0	5
	470008	RYUKYU UNIV.	10	0	5	0	0	2	0	0	3
Total		707	107	431	7	3	17	7	0	3	132

Table 1. No. of Patients by Stage and Age

Age		~19		20~29		30~39		40~49		50~59		60~69		70~79		80~		Total	
		No.	%	No.	%	No.	%	No.	%	No.	%	No.	%	No.	%	No.	%	No.	%
I	A	0	0.0	1	0.1	2	0.3	4	0.6	2	0.3	0	0.0	3	0.4	2	0.3	14	2.0
	B	0	0.0	22	3.1	21	3.0	19	2.7	36	5.1	13	1.8	6	0.9	3	0.4	120	17.0
	C(b)	0	0.0	1	0.1	1	0.1	1	0.1	1	0.1	1	0.1	2	0.3	0	0.0	7	1.0
	C(1)	0	0.0	1	0.1	2	0.3	2	0.3	2	0.3	2	0.3	0	0.0	0	0.0	9	1.3
	C(2)	2	0.3	4	0.6	6	0.9	5	0.7	6	0.9	5	0.7	5	0.7	4	0.6	37	5.2
	C(a)	14	2.0	95	13.4	114	16.1	107	15.1	129	18.3	94	13.3	64	9.1	30	4.2	647	91.5
	total	0	0.0	0	0.0	0	0.0	1	0.1	0	0.0	1	0.1	1	0.1	0	0.0	3	0.4
II	A	0	0.0	0	0.0	1	0.1	0	0.0	0	0.0	0	0.0	1	0.1	0	0.0	2	0.3
	B	0	0.0	1	0.1	0	0.0	2	0.3	1	0.1	1	0.1	0	0.0	0	0.0	5	0.7
	C(b)	0	0.0	0	0.0	0	0.0	0	0.0	0	0.0	0	0.0	1	0.1	0	0.0	1	0.1
	C(1)	0	0.0	0	0.0	0	0.0	0	0.0	0	0.0	0	0.0	1	0.1	0	0.0	1	0.1
	C(2)	0	0.0	0	0.0	0	0.0	0	0.0	0	0.0	0	0.0	0	0.0	0	0.0	0	0.0
	C(a)	0	0.0	2	0.3	2	0.3	0	0.0	1	0.1	0	0.0	0	0.0	0	0.0	5	0.7
	total	0	0.0	3	0.4	3	0.4	3	0.4	2	0.3	2	0.3	3	0.4	0	0.0	16	2.3
III	A	0	0.0	0	0.0	1	0.1	3	0.4	2	0.3	1	0.1	1	0.1	0	0.0	8	1.1
	B	0	0.0	0	0.0	3	0.4	2	0.3	1	0.1	0	0.0	2	0.3	1	0.1	9	1.3
	C	1	0.1	3	0.4	2	0.3	5	0.7	3	0.4	5	0.7	3	0.4	0	0.0	22	3.1
	total	1	0.1	3	0.4	6	0.9	10	1.4	6	0.9	6	0.9	6	0.9	1	0.1	39	5.5
IV		0	0.0	0	0.0	0	0.0	0	0.0	0	0.0	1	0.1	1	0.1	0	0.0	2	0.3
Neoadjuvant Chemotherapy		0	0.0	0	0.0	0	0.0	0	0.0	1	0.1	0	0.0	1	0.1	0	0.0	2	0.3
Unknown		0	0.0	0	0.0	0	0.0	0	0.0	1	0.1	0	0.0	0	0.0	0	0.0	1	0.1
Total		15	2.1	101	14.3	123	17.4	120	17.0	139	19.7	103	14.6	75	10.6	31	4.4	707	

Table 2. 5-Year Results, Treatment Started in 2005

5-year result	No. of patients	%
Alive with no Evidence of the Disease	301	91.2
Alive with Carcinoma	5	1.5
Alive with or without Carcinoma Unknown	2	0.6
Died of Carcinoma	6	1.8
Died of Other Malignant Tumor	6	1.8
Died of Intercurrent Disease	0	0.0
Cause of Death Unknown	0	0.0
Lost to follow-up	10	3.0
Total	330	

**Table 3. Stage, Treatment Started in 2005**

FIGO Stage		Patients treated	
		No.	
I	A	218	303
	B	6	
	C(b)	51	
	C(1)	4	
	C(2)	6	
	C(a)	18	
II	A	0	7
	B	1	
	C(b)	3	
	C(1)	0	
	C(2)	0	
	C(a)	3	
III	A	5	18
	B	6	
	C	7	
IV		2	
Neoadjuvant Chemotherapy		0	
Unknown		0	
Total		330	

**Table 4. Stage, Treatment Started in 2005  
Surface Epithelial-Stromal Tumors**

FIGO Stage		Patients treated	
		No.	
I	A	196	268
	B	6	
	C(b)	43	
	C(1)	2	
	C(2)	6	
	C(a)	15	
II	A	0	5
	B	1	
	C(b)	3	
	C(1)	0	
	C(2)	0	
	C(a)	1	
III	A	3	13
	B	4	
	C	6	
IV		1	
Neoadjuvant Chemotherapy		0	
Unknown		0	
Total		287	

**Table 5. Histology, Treatment Started in 2005**

Stage and Histological Type	FIGO Stage	Patients treated
		No.
Sex Cord/Stromal Tumors	I	18
	II	1
	III	3
	IV	1
Germ Cell Tumors	I	17
	II	1
	III	2
	IV	0

**Table 6. Stage and Histological Type, Treatment Started in 2005**

FIGO Stage	Histology	Patients treated	
		No.	%
I	Serous	59	22.0
	Mucinous	186	69.4
	Endometrioid	9	3.4
	Clear	0	0.0
	Other	14	5.2
II	Serous	3	60.0
	Mucinous	1	20.0
	Endometrioid	0	0.0
	Clear	0	0.0
	Other	1	20.0
III	Serous	9	69.2
	Mucinous	4	30.8
	Endometrioid	0	0.0
	Clear	0	0.0
	Other	0	0.0
IV	Serous	0	0.0
	Mucinous	1	100.0
	Endometrioid	0	0.0
	Clear	0	0.0
	Other	0	0.0
Neoadjuvant Chemotherapy	Serous	0	0.0
	Mucinous	0	0.0
	Endometrioid	0	0.0
	Clear	0	0.0
	Other	0	0.0
Unknown	Serous	0	0.0
	Mucinous	0	0.0
	Endometrioid	0	0.0
	Clear	0	0.0
	Other	0	0.0