

## 報 告

## 婦人科腫瘍委員会

## 第 52 回治療年報

2004 年に治療した子宮頸癌, 子宮体癌, 卵巣悪性・境界悪性腫瘍の 5 年治療成績について

婦人科腫瘍委員会の第 52 回治療年報(2004 年治療開始例)の報告をいたします。

なお, 第 49 回治療年報より, 従来の直接法最小生存率\*による方法から Kaplan-Meier 法に変更しました。追跡不能症例(Lost to follow-up)が多いと治療成績の信頼性が低下するため, 予後追跡報告で追跡不能症例が 20% を超える施設のデータは治療成績の解析には用いないこととしています。予後解析に使用された施設は, 施設名の左に○がつけてあります。

加盟機関の先生方のご苦勞に感謝申し上げます, また婦人科腫瘍委員会の全委員に御礼申し上げます。今後とも何卒よろしくお願ひ申し上げます。

婦人科腫瘍委員会  
委員長 青木 陽一

## 子宮頸癌治療成績

Table A	5 年後の治療転帰
Table 1~8	項目別成績
Figure 1~10	予後 5 年生存率

## 子宮体癌治療成績

Table A	5 年後の治療転帰
Table 1~8	項目別成績
Figure 1~10	予後 5 年生存率

## 卵巣悪性腫瘍治療成績

Table A	5 年後の治療転帰
Table 1~6	項目別成績
Figure 1~9	予後 5 年生存率

## 卵巣境界悪性腫瘍治療成績

Table A	5 年後の治療転帰
Table 1~6	項目別成績

\*最小生存率: 直接法とは観察開始時点から一定の年限を経過した症例について生存者数を観察対象者数で割った値である。この場合, 消息不明例の取扱いによって 3 種類の生存率が計算される。すなわち, 消息不明例をすべて死亡とみなして計算する最小生存率, すべて生存とみなして計算する最大生存率, 消息不明例を対象から除外して計算する推定(概算)生存率の 3 種類である。

(日本癌治療学会・癌規約総論, 金原出版, 1991 より抜粋)

本報告に関するお問い合わせは婦人科腫瘍委員会宛にお願い致します。

## 子宮頸癌治療成績

## Statement for the Year 2004, Inclusive, Cervix

Table A. 5-Year Results, Stage I-IV

	A	B	C	D	E	F	G	H	I	J	K
	Institution	Total No. Treated	no description	Alive with no Evidence of the Disease	Alive with Carcinoma	Alive with or without Carcinoma Unknown	Died of Carcinoma	Died of Other Malignant Tumor	Died of Intercurrent Disease	Cause of Death Unknown	Lost to follow-up
○	010003 HOKKAIDO CANCER CENTER	34	2	21	1	1	5	0	1	0	3
	010025 SAPPORO MED. UNIV.	69	0	34	0	0	3	0	0	0	32
○	010027 HOKKAIDO UNIV.	34	0	20	1	0	9	0	0	0	4
○	010028 KKR SAPPORO MED. CENTER	2	0	1	0	1	0	0	0	0	0
	010037 ASAHIKAWA CITY HOSP.	9	9	0	0	0	0	0	0	0	0
○	010040 ASAHIKAWA MED. COLL.	10	0	5	0	0	4	0	0	0	1
	010045 KUSHIRO ROSAI HOSP.	7	7	0	0	0	0	0	0	0	0
	010051 MURORAN CITY GENERAL HOSP.	8	8	0	0	0	0	0	0	0	0
○	020008 MUTSU GENERAL HOSP.	3	0	2	1	0	0	0	0	0	0
○	020012 HIROSAKI UNIV.	12	0	9	0	0	3	0	0	0	0
	020017 MISAWA CITY HOSP.	2	0	1	0	0	0	0	0	0	1
○	040004 TOHOKU UNIV.	38	0	21	0	6	5	1	0	0	5
○	040013 SENDAI MED. CENTER	11	0	6	0	0	3	0	0	0	2
○	050001 AKITA RED CROSS HOSP.	7	0	1	0	0	4	0	2	0	0
	050003 AKITA UNIV.	24	0	12	0	0	6	0	0	0	6
○	060002 YAMAGATA PREF. CENTRAL HOSP.	12	0	11	0	0	1	0	0	0	0
	060005 YAMAGATA UNIV.	26	26	0	0	0	0	0	0	0	0
	070003 FUKUSHIMA MED. UNIV.	20	0	9	1	0	5	0	0	0	5
○	080001 TSUCHIURA KYODO GENERAL HOSP.	21	0	12	0	2	5	1	1	0	0
	080003 KASUMIGAURA MED. CENTER	16	16	0	0	0	0	0	0	0	0
○	080007 TSUKUBA UNIV.	54	0	36	0	1	12	0	0	0	5
	080017 MITO MED. CENTER	14	14	0	0	0	0	0	0	0	0
	080021 HITACHI GENERAL HOSP.	18	11	0	0	0	6	1	0	0	0
	080031 TSUKUBA MED. CENTER	6	0	1	0	0	2	1	0	0	2
	090004 DOKKYO MED. UNIV.	25	0	0	0	0	0	0	0	0	25
○	090005 SAISEIKAI UTSUNOMIYA HOSP.	12	0	7	1	0	3	0	0	0	1
	090011 ASHIKAGA RED CROSS HOSP.	17	0	4	4	1	3	0	0	0	5
	090015 JICHI MED. UNIV.	45	0	25	1	0	4	0	0	0	15
	090016 TOCHIGI CANCER CENTER	26	0	9	0	2	7	0	0	0	8
○	100012 GUNMA UNIV.	22	0	21	0	0	0	0	0	0	1
	100022 GUNMA PREF. CANCER CENTER	74	0	19	2	1	7	0	0	0	45
○	110008 SAITAMA SHAKAI HOKEN HOSP.	6	0	6	0	0	0	0	0	0	0
○	110014 KOSHIGAYA MUNI. HOSP.	12	0	7	0	0	3	0	0	0	2
	110022 SAITAMA MED. CENTER	41	41	0	0	0	0	0	0	0	0
○	110023 SAITAMA NATIONAL HOSP.	19	0	12	0	1	2	0	1	0	3
	110027 NATIONAL DEFENSE MED. COLL.	15	15	0	0	0	0	0	0	0	0
○	110030 SAITAMA CANCER CENTER	75	0	48	2	0	17	1	1	3	3
○	120005 CHIBA UNIV.	24	0	13	3	0	4	1	0	0	3
	120009 NIPPON MED. SCH. CHIBA HOKUSOU HOSP.	13	13	0	0	0	0	0	0	0	0
○	120012 MATSUDO CITY HOSP.	29	0	19	0	0	5	0	0	0	5
	120021 JIKEI UNIV. KASHIWA HOSP.	43	0	16	5	0	0	0	2	0	20
○	120023 JUNTENDO UNIV. URAYASU HOSP.	21	0	14	1	0	6	0	0	0	0
	120029 ASAHI CENTRAL HOSP.	24	0	16	1	0	2	0	0	0	5
○	120035 KAMEDA MED. CENTER	21	0	11	1	1	6	0	1	0	1
○	120042 CHIBA CANCER CENTER	25	0	14	0	1	5	0	0	0	5
	120043 NATIONAL INS. OF RADIOLOGICAL SCIENCES	57	0	22	1	1	25	2	6	0	0
○	130005 MITUI MEMORIAL HOSP.	17	0	13	0	0	1	0	0	0	3
○	130009 NATIONAL CANCER CENTER	90	0	62	5	0	22	0	0	0	1
	130013 JIKEI UNIV.	23	0	10	1	0	2	0	0	0	10
○	130023 JUNTENDO UNIV.	26	0	23	0	0	2	0	0	0	1
	130024 TOKYO MED. DENT. UNIV.	11	11	0	0	0	0	0	0	0	0
	130025 NIPPON MED. SCH.	19	19	0	0	0	0	0	0	0	0
○	130026 TOKYO UNIV.	26	1	14	0	0	7	0	0	0	4
○	130029 TOKYO WOMENS MED. UNIV. MED. CENTER EAST	5	0	4	0	1	0	0	0	0	0

	A	B	C	D	E	F	G	H	I	J	K
	Institution	Total No. Treated	no description	Alive with no Evidence of the Disease	Alive with Carcinoma	Alive with or without Carcinoma Unknown	Died of Carcinoma	Died of Other Malignant Tumor	Died of Intercurrent Disease	Cause of Death Unknown	Lost to follow-up
	130034	JIKEI UNIV. KATSUSHIKA MED. CENTER	33	33	0	0	0	0	0	0	0
	130044	NTT MED. CENTER TOKYO	6	0	3	0	0	1	0	0	2
○	130046	SHOWA UNIV.	25	0	18	0	0	4	0	0	3
○	130050	TOHO UNIV. OMORI HOSP.	12	0	9	0	0	3	0	0	0
○	130055	RED CROSS MED. CENTER	10	0	8	0	0	0	1	0	1
	130063	KOSEI CENTRAL HOSP.	9	0	7	0	0	0	0	0	2
	130074	TOKYO MED. UNIV.	19	19	0	0	0	0	0	0	0
	130077	KEIO UNIV.	41	0	27	0	0	2	0	0	12
	130080	NATIONAL CENTER FOR GLOBAL HEALTH AND MED.	7	7	0	0	0	0	0	0	0
	130081	TOKYO WOMENS MED. UNIV.	12	12	0	0	0	0	0	0	0
	130085	KOSEI HOSP.	5	0	2	0	0	1	0	0	2
	130092	TEIKYO UNIV.	13	0	6	1	0	3	0	0	3
○	130095	NIHON UNIV.	29	0	17	0	0	9	0	0	3
	130099	MUSASHINO RED CROSS HOSP.	23	21	0	0	0	1	0	0	1
	130100	KYORIN UNIV.	6	0	2	0	0	1	0	0	3
	130106	NATIONAL DESASTER MED. CENTER	3	3	0	0	0	0	0	0	0
	130112	MACHIDA MUNI. HOSP.	10	0	2	0	0	1	0	0	6
○	130116	JIKEI UNIV. 3RD HOSP.	10	0	10	0	0	0	0	0	0
○	130119	NIPPON MED. SCH. TAMA NAGAYAMA HOSP.	5	0	3	0	1	1	0	0	0
	130122	TOKYO METRO. KOMAGOME HOSP.	29	0	10	0	0	10	0	1	8
	130124	KYOUNDO HOSP.	2	0	1	0	0	0	0	0	1
○	130125	CANCER INST. HOSP.	117	2	72	6	0	19	0	0	18
	130135	TAMA-NAMBU CHIKI HOSP.	11	7	0	0	0	0	0	0	4
	140001	KAWASAKI MUNI. HOSP.	19	0	8	1	1	4	1	0	4
	140006	NIPPON MED. SCH. MUSASHI KOSUGI HOSP.	6	0	2	0	0	0	0	0	4
	140008	KANTO ROSAI HOSP.	4	0	1	0	0	2	0	0	1
	140012	ST. MARIANNA UNIV.	22	22	0	0	0	0	0	0	0
○	140017	SHOWA UNIV. FUJIGAOKA HOSP.	20	0	13	0	1	4	0	1	1
	140020	KITAZATO UNIV.	59	6	29	1	0	11	0	0	12
○	140029	YOKOHAMA CITY UNIV.	33	0	17	1	0	11	0	1	3
○	140030	YOKOHAMA MINAMI KYOSAI HOSP.	12	2	2	1	0	6	0	1	0
	140035	YOKOHAMA MUNI. HOSP.	7	0	3	0	0	2	0	0	2
	140037	ST. MARIANNA UNIV. YOKOHAMA CITY SEIBU HOSP.	2	2	0	0	0	0	0	0	0
	140039	ATSUGI CITY HOSP.	5	5	0	0	0	0	0	0	0
	140043	YOKOHAMA SAKAE KYOSAI HOSP.	4	4	0	0	0	0	0	0	0
	140049	HIRATSUKA CITY HOSP.	9	9	0	0	0	0	0	0	0
○	140054	ISEHARA KYODO HO S P.	1	0	1	0	0	0	0	0	0
	140055	TOKAI UNIV.	17	0	7	1	0	4	0	0	5
○	140059	KANAGAWA CANCER CENTER	136	0	104	1	0	27	0	1	2
	140061	YOKOHAMA CITY UNIV. MED. CENTER	4	0	1	0	0	1	0	0	2
	150002	YAMANASHI PREF. CENTRAL HOSP.	27	27	0	0	0	0	0	0	0
○	150006	UNIV. OF YAMANASHI	19	0	9	0	0	7	0	1	2
	160001	NAGANO RED CROSS HOSP.	28	0	14	1	0	3	0	0	10
○	160006	SHINSHU UNIV.	26	0	9	1	1	10	0	0	5
	160014	MATSUMOTO MED. CENTER MATSUMOTO HOSP.	4	4	0	0	0	0	0	0	0
	160022	NAGANO MUNI. HOSP.	7	7	0	0	0	0	0	0	0
○	170006	FUJI CITY GENERAL HOSP.	6	0	5	0	0	1	0	0	0
○	180001	NAGAOKA RED CROSS HOSP.	22	0	17	1	0	2	0	0	2
	180009	NIIGATA UNIV.	74	74	0	0	0	0	0	0	0
○	180010	NIIGATA CANCER CENTER HOSP.	88	0	68	0	1	11	0	0	8
	190001	TOYAMA UNIV.	17	0	9	0	0	1	0	1	6
	190002	TOYAMA RED CROSS HOSP.	8	0	2	1	0	2	0	0	3
	190003	TOYAMA PREF. CENTRAL HOSP.	18	18	0	0	0	0	0	0	0
○	200001	KANAZAWA MED. UNIV.	7	0	5	0	0	1	0	0	1
	200002	KANAZAWA MED. CENTER	12	0	5	0	0	2	0	0	5
	200004	KANAZAWA UNIV.	13	0	9	0	0	1	0	0	3
	210003	FUKUI UNIV.	12	7	0	0	0	2	0	0	3
○	210004	FUKUI RED CROSS HOSP.	6	0	3	0	1	2	0	0	0
○	220002	GIFU UNIV.	16	0	13	0	1	2	0	0	0
	220006	OGAKI MUNI. HOSP.	5	5	0	0	0	0	0	0	0

A		B	C	D	E	F	G	H	I	J	K
Institution		Total No. Treated	no description	Alive with no Evidence of the Disease	Alive with Carcinoma	Alive with or without Carcinoma Unknown	Died of Carcinoma	Died of Other Malignant Tumor	Died of Intercurrent Disease	Cause of Death Unknown	Lost to follow-up
	230001 TOYOHASHI MUNI. HOSP.	21	18	0	0	0	2	0	0	0	1
○	230014 RED CROSS NAGOYA DAIICHI HOSP.	26	0	21	0	0	3	1	1	0	0
	230022 MIDORI MUNI. HOSP.	9	9	0	0	0	0	0	0	0	0
	230024 NAGOYA MED. CENTER	27	27	0	0	0	0	0	0	0	0
	230031 NAGOYA UNIV.	15	14	0	0	0	1	0	0	0	0
○	230034 NAGOYA CITY UNIV.	16	0	8	4	0	4	0	0	0	0
○	230035 FUJITA HEALTH UMIN.	16	0	8	0	1	5	0	0	0	2
	230040 AICHI MED. UNIV.	20	11	0	0	0	4	0	0	0	5
○	230052 AICHI CANCER CENTER	76	0	53	2	2	18	0	1	0	0
	240002 MIE PREF. GENERAL MED. CENTER	16	1	7	0	0	2	0	0	0	6
○	240003 YOKKAICHI MUNI. HOSP.	8	0	5	1	0	2	0	0	0	0
○	240009 MIE UNIV.	27	0	15	0	0	10	0	0	0	2
○	240015 ISE RED CROSS HOSP.	14	0	9	1	0	2	0	1	1	0
○	250001 OHTSU RED CROSS HOSP.	4	0	3	0	0	1	0	0	0	0
○	260002 KYOTO 2ND RED CROSS HOSP.	27	0	15	2	0	4	0	2	1	3
	260003 KYOTO PREF. UNIV. OF MED.	14	0	8	0	0	3	0	0	0	3
	260006 KYOTO CITY HOSP.	17	17	0	0	0	0	0	0	0	0
	260007 KYOTO 1ST RED CROSS HOSP.	18	0	11	0	1	2	0	0	0	4
○	260009 KYOTO UNIV.	35	1	27	0	1	5	0	1	0	0
	260013 KYOTO KATSURA HOSP.	5	0	3	0	0	0	0	0	0	2
	260017 SAISEIKAI KYOTO HOSP.	6	1	3	1	0	0	0	0	0	1
○	270003 KITANO HOSP.	17	0	15	0	0	2	0	0	0	0
	270007 OSAKA CITY GENERAL HOSP.	51	51	0	0	0	0	0	0	0	0
	270009 OSAKA NATIONAL HOSP.	65	0	38	0	1	9	0	0	2	15
	270013 OSAKA POLICE HOSP.	7	0	3	0	0	0	0	0	0	4
	270016 OSAKA CITY UNIV.	50	0	30	2	0	7	0	0	0	11
	270035 OSAKA UNIV.	39	4	18	0	0	5	0	0	0	12
○	270041 OSAKA MED. COLL.	53	0	38	0	0	6	0	1	0	8
	270042 KANSAI MED. UNIV.	22	0	6	0	0	0	0	0	0	16
	270056 KINKI UNIV.	57	31	12	0	0	0	0	1	0	13
	270062 OSAKA ROUSAI HOSP.	43	0	14	2	0	4	0	0	0	23
○	270101 OSAKA MED. CENTER FOR CANCER AND CVD	61	0	38	1	1	13	0	0	0	8
	280001 KOBE UNIV.	10	0	3	0	0	0	0	0	0	7
	280002 KOBE CITY MED. CENTER GENERAL HOSP.	25	0	13	0	0	5	0	0	0	7
○	280010 KOBE MED. CENTER	5	0	3	0	0	1	0	1	0	0
○	280015 KANSAI ROSAI HOSP.	15	0	10	0	1	4	0	0	0	0
	280021 HYOGO MED. COLL.	30	30	0	0	0	0	0	0	0	0
○	280028 TOYOOKA PUBLIC HOSP.	6	0	3	0	0	2	0	0	0	1
	280030 HIMEJI RED CROSS HOSP.	24	0	12	0	0	6	0	0	1	5
	280031 HIMEJI MED. CENTER	13	4	0	0	0	3	0	0	0	6
○	280033 HYOGO CANCER CENTER	103	0	72	5	1	25	0	0	0	0
○	290003 NARA PREF. NARA HOSP.	26	0	17	4	0	4	0	0	0	1
○	290004 TENRI HOSP.	32	0	21	0	0	5	0	0	0	6
	290007 NARA MED. UNIV.	24	0	0	0	0	0	0	0	0	24
	290009 MIMURO HOSP.	2	2	0	0	0	0	0	0	0	0
○	300002 JAPAN RED CROSS WAKAYAMA MED. CENTER	24	0	11	0	0	12	0	1	0	0
○	300003 WAKAYAMA MED. UNIV.	23	0	16	3	0	3	0	0	0	1
	310001 TOTTORI PREF. CENTRAL HOSP.	6	0	3	0	0	1	0	0	0	2
○	310007 TOTTORI UNIV.	30	0	23	1	0	6	0	0	0	0
○	320003 SHIMANE UNIV.	13	0	9	1	0	3	0	0	0	0
	330002 OKAYAMA RED CROSS HOSP.	14	0	7	0	0	2	0	0	0	5
○	330003 KAWASAKI HOSP.	2	0	1	0	0	0	1	0	0	0
○	330004 OKAYAMA SAISEIKAI GENERAL HOSP.	5	0	4	0	0	0	0	0	0	1
	330006 OKAYAMA UNIV.	41	0	29	1	0	1	0	0	0	10
○	330008 KURASHIKI CENTRAL HOSP.	18	0	9	0	0	6	0	1	0	2
	330009 KAWASAKI MED. SCH.	16	16	0	0	0	0	0	0	0	0
	330010 KURASIKI MED. CENTER	17	17	0	0	0	0	0	0	0	0
○	340001 FUKUYAMA MED. CENTER	27	0	18	0	1	7	1	0	0	0
	340002 ONOMICHI GENERAL HOSP.	14	14	0	0	0	0	0	0	0	0
○	340007 HIROSHIMA CITY HOSP.	31	0	17	1	0	7	0	0	0	6

	A	B	C	D	E	F	G	H	I	J	K
	Institution	Total No. Treated	no description	Alive with no Evidence of the Disease	Alive with Carcinoma	Alive with or without Carcinoma Unknown	Died of Carcinoma	Died of Other Malignant Tumor	Died of Intercurrent Disease	Cause of Death Unknown	Lost to follow-up
○	340008 HIROSHIMA RED CROSS HOSP.	9	0	6	0	0	2	0	0	0	1
○	340010 HIROSHIMA CITY ASA HOSP.	20	1	9	1	2	6	0	0	0	1
○	340012 HIROSHIMA UNIV.	25	0	14	0	1	8	0	0	0	2
○	340014 HIROSHIMA PREF. HOSP.	16	0	13	0	0	2	0	0	0	1
○	340015 KURE MED. CENTER	23	0	21	0	0	2	0	0	0	0
	340017 KURE KYOSAI HOSP.	10	10	0	0	0	0	0	0	0	0
○	340018 HIROSHIMA GENERAL HOSP.	10	0	6	0	0	2	0	0	0	2
	340031 HIGASHIHIROSHIMA MED. CENTER	14	14	0	0	0	0	0	0	0	0
	350003 TOKUYAMA CENTRAL HOSP.	22	22	0	0	0	0	0	0	0	0
	350008 YAMAGUCHI RED CROSS HOSP.	13	0	5	0	0	2	1	0	0	5
	350009 YAMAGUCHI UNIV.	23	0	13	0	0	2	0	0	0	8
○	360003 TOKUSHIMA UNIV.	20	0	9	2	1	3	0	1	0	4
○	360005 TOKUSHIMA PREF. CENTRAL HOSP.	7	0	3	0	0	3	0	0	0	1
	370001 TAKAMATSU RED CROSS HOSP.	18	0	8	0	0	2	0	2	0	6
	370003 KAGAWA PREF. CENTRAL HOSP.	13	13	0	0	0	0	0	0	0	0
○	380001 SHIKOKU CANCER CENTER	72	0	47	1	0	16	0	3	0	5
	380002 EHIME PREF. CENTRAL HOSP.	4	4	0	0	0	0	0	0	0	0
○	380005 MATSUYAMA RED CROSS HOSP.	1	0	1	0	0	0	0	0	0	0
○	380006 EHIME UNIV.	21	0	13	0	2	1	0	0	2	3
○	390003 KOCHI HEALTH SCIENCES CENTER	10	0	5	1	1	3	0	0	0	0
○	390006 KOCHI UNIV.	11	0	7	2	0	0	0	0	0	2
○	400007 KYUSHU KOSEINENKIN HOSP.	23	0	14	1	0	4	0	0	0	4
○	400008 UNIV. OCCUPATIONAL & ENVIRONMENTAL HEALTH	24	0	16	0	0	6	0	2	0	0
○	400010 KYUSHU MED. CENTER	12	0	9	0	1	1	0	0	0	1
	400012 KYUSHU UNIV.	50	43	0	0	0	4	0	0	0	3
○	400013 FUKUOKA UNIV.	26	0	16	0	0	3	0	1	1	5
	400014 FUKUOKA RED CROSS HOSP.	8	0	3	0	0	3	0	0	0	2
○	400020 KURUME UNIV.	46	0	22	1	0	15	0	1	0	7
○	400040 KYUSHU CANCER CENTER	61	0	41	0	0	10	1	1	0	8
	410002 SAGA PREF. HOSP. KOSEIKAN	11	11	0	0	0	0	0	0	0	0
○	410005 SAGA UNIV.	31	0	18	3	0	4	1	0	0	5
○	420001 NAGASAKI MUNI. HOSP.	16	0	7	0	1	6	0	0	0	2
	420002 NAGASAKI UNIV.	27	0	12	0	0	9	0	0	0	6
○	420003 RED CROSS NAGASAKI ATOMIC BOMB HOSP.	6	0	4	0	0	1	0	0	0	1
○	420006 SASEBO KYOSAI HOSP.	16	0	9	0	0	6	1	0	0	0
○	430001 KUMAMOTO MED. CENTER	29	0	18	1	0	6	0	0	0	4
○	430002 KUMAMOTO UNIV.	56	0	37	1	0	10	0	0	0	8
○	430003 KUMAMOTO CITY HOSP.	27	0	14	4	0	6	0	1	0	2
	440002 OITA PREF. HOSP.	43	0	30	0	0	4	0	0	0	9
	450001 MIYAZAKI PREF. HOSP.	42	0	17	0	0	8	0	1	0	16
○	460001 KAGOSHIMA UNIV.	18	0	14	1	0	1	0	0	0	2
	460004 KAGOSHIMA CITY HOSP.	53	0	30	1	0	6	0	0	0	16
○	470008 RYUKYU UNIV.	73	0	52	2	0	12	0	0	0	7
○	470010 OKINAWA PREF. CHUBU HOSP.	13	0	8	0	0	3	0	0	0	2
	Total	5083	875	2444	103	46	780	16	46	15	758

Table 1. No. of Patients by Stage and Age

Age FIGO Stage		~19		20~29		30~39		40~49		50~59		60~69		70~79		80~		Total	
		No.	%	No.	%	No.	%	No.	%	No.	%	No.	%	No.	%	No.	%	No.	%
I	A1	0	0.0	74	1.5	360	7.1	228	4.5	111	2.2	69	1.4	31	0.6	7	0.1	880	17.3
	A2	0	0.0	4	0.1	28	0.6	10	0.2	19	0.4	4	0.1	4	0.1	2	0.0	71	1.4
	A not cl.	0	0.0	0	0.0	20	0.4	10	0.2	8	0.2	4	0.1	4	0.1	0	0.0	46	0.9
	B1	1	0.0	60	1.2	335	6.6	330	6.5	249	4.9	173	3.4	91	1.8	36	0.7	1275	25.1
	B2	0	0.0	13	0.3	104	2.1	111	2.2	83	1.6	34	0.7	22	0.4	3	0.1	370	7.3
	B not cl.	0	0.0	1	0.0	19	0.4	10	0.2	19	0.4	12	0.2	10	0.2	4	0.1	75	1.5
	not cl.	0	0.0	5	0.1	7	0.1	1	0.0	3	0.1	1	0.0	3	0.1	2	0.0	22	0.4
	total	1	0.0	157	3.1	873	17.2	700	13.8	492	9.7	297	5.8	165	3.3	54	1.1	2739	53.9
II	A	0	0.0	11	0.2	44	0.9	40	0.8	68	1.3	51	1.0	55	1.1	13	0.3	282	5.6
	B	0	0.0	13	0.3	104	2.1	152	3.0	235	4.6	175	3.4	141	2.8	52	1.0	872	17.2
	not cl.	0	0.0	0	0.0	0	0.0	0	0.0	1	0.0	1	0.0	1	0.0	0	0.0	3	0.1
	total	0	0.0	24	0.5	148	2.9	192	3.8	304	6.0	227	4.5	197	3.9	65	1.3	1157	22.8
III	A	0	0.0	2	0.0	1	0.0	5	0.1	9	0.2	12	0.2	16	0.3	6	0.1	51	1.0
	B	0	0.0	3	0.1	45	0.9	102	2.0	185	3.6	162	3.2	140	2.8	99	2.0	736	14.5
	not cl.	0	0.0	0	0.0	1	0.0	0	0.0	2	0.0	0	0.0	2	0.0	1	0.0	6	0.1
	total	0	0.0	5	0.1	47	0.9	107	2.1	196	3.9	174	3.4	158	3.1	106	2.1	793	15.6
IV	A	0	0.0	0	0.0	8	0.2	15	0.3	28	0.6	33	0.7	40	0.8	22	0.4	146	2.9
	B	0	0.0	1	0.0	19	0.4	30	0.6	71	1.4	54	1.1	38	0.8	19	0.4	232	4.6
	not cl.	0	0.0	0	0.0	1	0.0	3	0.1	2	0.0	3	0.1	6	0.1	1	0.0	16	0.3
	total	0	0.0	1	0.0	28	0.6	48	0.9	101	2.0	90	1.8	84	1.7	42	0.8	394	7.8
Total		1	0.0	187	3.7	1096	21.6	1047	20.6	1093	21.5	788	15.5	604	11.9	267	5.3	5083	

Table 2. Type of Treatment

Treatment		Surgery																
		Alone		Rad.		Chem.Immun. Hormon		Other		Rad. Chem.Immun. Hormon		Rad. Other		Chem.Immun. Hormon, Other		Rad. Chem.Immun. Hormon, Other		
		No.	%	No.	%	No.	%	No.	%	No.	%	No.	%	No.	%	No.	%	
FIGO Stage	I	A1	842	16.6	6	0.1	4	0.1	0	0.0	4	0.1	0	0.0	0	0.0	0	0.0
		A2	61	1.2	4	0.1	2	0.0	0	0.0	2	0.0	0	0.0	0	0.0	0	0.0
		A not cl.	42	0.8	1	0.0	1	0.0	0	0.0	0	0.0	0	0.0	0	0.0	0	0.0
		B1	735	14.5	165	3.3	117	2.3	1	0.0	137	2.7	1	0.0	0	0.0	2	0.0
		B2	75	1.5	61	1.2	79	1.6	1	0.0	111	2.2	0	0.0	0	0.0	0	0.0
		B not cl.	32	0.6	10	0.2	8	0.2	0	0.0	11	0.2	0	0.0	0	0.0	0	0.0
		not cl.	16	0.3	1	0.0	0	0.0	0	0.0	0	0.0	0	0.0	0	0.0	0	0.0
		total	1803	35.5	248	4.9	211	4.2	2	0.0	265	5.2	1	0.0	0	0.0	2	0.0
II	A	60	1.2	46	0.9	39	0.8	0	0.0	58	1.1	0	0.0	0	0.0	0	0.0	
	B	35	0.7	119	2.3	143	2.8	2	0.0	218	4.3	0	0.0	0	0.0	1	0.0	
	not cl.	0	0.0	0	0.0	0	0.0	0	0.0	2	0.0	0	0.0	0	0.0	0	0.0	
	total	95	1.9	165	3.3	182	3.6	2	0.0	278	5.5	0	0.0	0	0.0	1	0.0	
III	A	2	0.0	2	0.0	3	0.1	0	0.0	4	0.1	0	0.0	0	0.0	0	0.0	
	B	0	0.0	7	0.1	27	0.5	0	0.0	52	1.0	0	0.0	0	0.0	0	0.0	
	not cl.	0	0.0	0	0.0	1	0.0	0	0.0	2	0.0	0	0.0	0	0.0	0	0.0	
	total	2	0.0	9	0.2	31	0.6	0	0.0	58	1.1	0	0.0	0	0.0	0	0.0	
IV	A	0	0.0	2	0.0	0	0.0	0	0.0	10	0.2	0	0.0	0	0.0	0	0.0	
	B	2	0.0	1	0.0	18	0.4	0	0.0	12	0.2	0	0.0	0	0.0	0	0.0	
	not cl.	0	0.0	1	0.0	0	0.0	0	0.0	2	0.0	0	0.0	0	0.0	0	0.0	
	total	2	0.0	4	0.1	18	0.4	0	0.0	24	0.5	0	0.0	0	0.0	0	0.0	
Total		1902	37.4	426	8.4	442	8.7	4	0.1	625	12.3	1	0.0	0	0.0	3	0.1	

Treatment		Radiation								Chem.Immun. Hormon				Others				Total		
		Alone		Chem.Immun. Hormon		Other		Chem.Immun. Hormon, Other		Alone		Other		Alone		Other				
		No.	%	No.	%	No.	%	No.	%	No.	%	No.	%	No.	%	No.	%			
FIGO Stage	I	A1	8	0.2	0	0.0	0	0.0	0	0.0	1	0.0	0	0.0	15	0.3	0	0.0	880	17.3
		A2	2	0.0	0	0.0	0	0.0	0	0.0	0	0.0	0	0.0	0	0.0	0	0.0	71	1.4
		A not cl.	2	0.0	0	0.0	0	0.0	0	0.0	0	0.0	0	0.0	0	0.0	0	0.0	46	0.9
		B1	91	1.8	22	0.4	0	0.0	0	0.0	3	0.1	0	0.0	1	0.0	0	0.0	1275	25.1
		B2	21	0.4	22	0.4	0	0.0	0	0.0	0	0.0	0	0.0	0	0.0	0	0.0	370	7.3
		B not cl.	10	0.2	4	0.1	0	0.0	0	0.0	0	0.0	0	0.0	0	0.0	0	0.0	75	1.5
		not cl.	3	0.1	0	0.0	0	0.0	0	0.0	0	0.0	0	0.0	2	0.0	0	0.0	22	0.4
		total	137	2.7	48	0.9	0	0.0	0	0.0	4	0.1	0	0.0	18	0.4	0	0.0	2739	53.9
II	A	60	1.2	19	0.4	0	0.0	0	0.0	0	0.0	0	0.0	0	0.0	0	0.0	282	5.6	
	B	187	3.7	157	3.1	0	0.0	2	0.0	8	0.2	0	0.0	0	0.0	0	0.0	872	17.2	
	not cl.	1	0.0	0	0.0	0	0.0	0	0.0	0	0.0	0	0.0	0	0.0	0	0.0	3	0.1	
	total	248	4.9	176	3.5	0	0.0	2	0.0	8	0.2	0	0.0	0	0.0	0	0.0	1157	22.8	
III	A	17	0.3	22	0.4	0	0.0	0	0.0	0	0.0	0	0.0	1	0.0	0	0.0	51	1.0	
	B	295	5.8	335	6.6	2	0.0	7	0.1	10	0.2	0	0.0	1	0.0	0	0.0	736	14.5	
	not cl.	2	0.0	1	0.0	0	0.0	0	0.0	0	0.0	0	0.0	0	0.0	0	0.0	6	0.1	
	total	314	6.2	358	7.0	2	0.0	7	0.1	10	0.2	0	0.0	2	0.0	0	0.0	793	15.6	
IV	A	68	1.3	57	1.1	1	0.0	3	0.1	3	0.1	0	0.0	2	0.0	0	0.0	146	2.9	
	B	69	1.4	101	2.0	0	0.0	1	0.0	27	0.5	0	0.0	1	0.0	0	0.0	232	4.6	
	not cl.	4	0.1	4	0.1	0	0.0	0	0.0	4	0.1	0	0.0	1	0.0	0	0.0	16	0.3	
	total	141	2.8	162	3.2	1	0.0	4	0.1	34	0.7	0	0.0	4	0.1	0	0.0	394	7.8	
Total		840	16.5	744	14.6	3	0.1	13	0.3	56	1.1	0	0.0	24	0.5	0	0.0	5083		

**Table 3. 5-Year Results, Treatment Started in 2004**

5-year result	No. of patients	%
Alive with no Evidence of the Disease	1800	67.3
Alive with Carcinoma	75	2.8
Alive with or without Carcinoma Unknown	39	1.5
Died of Carcinoma	555	20.7
Died of Other Malignant Tumor	12	0.5
Died of Intercurrent Disease	38	1.4
Cause of Death Unknown	10	0.4
Lost to follow-up	147	5.5
Total	2676	

**Table 4. 5-Year Survival by Stage, Treatment Started in 2004**

FIGO Stage		Patients treated		5-year survival		Lost to follow-up
		No.		%		
I	A1	393	1400	100.0	91.5	80/1400 (5.7%)
	A2	37		100.0		
	A not cl.	24		-		
	B1	715		91.1		
	B2	188		74.8		
	B not cl.	39		-		
II	A	152	653	81.2	73.7	35/653 (5.4%)
	B	500		71.5		
	not cl.	1		-		
III	A	24	399	56.6	53.9	22/399 (5.5%)
	B	371		53.3		
	not cl.	4		-		
IV	A	81	224	33.8	28.4	10/224 (4.5%)
	B	137		24.7		
	not cl.	6		-		
Total		2676		76.4		

**Table 5. 5-Year Survival by Histological Type, Treatment Started in 2004**

Histological type	Patients treated		5-year survival
	No.	%	%
Squamous carcinoma	2005	74.9	78.3
Adenocarcinoma	462	17.3	72.5
Adenosquamous carcinoma	117	4.4	72.4
Others	86	3.2	61.5
No description	6	0.2	-

**Table 6. 5-Year Survival by Stage and Histological Type, Treatment Started in 2004**

FIGO Stage	Histology type	Patients treated		5-year survival
		No.	%	%
I	Squamous carcinoma	1019	72.8	92.6
	Adenocarcinoma	281	20.1	90.3
	Adenosquamous carcinoma	58	4.1	87.9
	Others	41	2.9	80.1
	No description	1	0.1	-
II	Squamous carcinoma	489	74.9	77.7
	Adenocarcinoma	98	15.0	58.2
	Adenosquamous carcinoma	42	6.4	68.3
	Others	23	3.5	65.2
	No description	1	0.2	-
III	Squamous carcinoma	341	85.5	56.8
	Adenocarcinoma	37	9.3	35.1
	Adenosquamous carcinoma	12	3.0	41.7
	Others	8	2.0	50.0
	No description	1	0.3	-
IV	Squamous carcinoma	156	69.6	32.8
	Adenocarcinoma	46	20.5	21.3
	Adenosquamous carcinoma	5	2.2	0.0
	Others	14	6.3	7.1
	No description	3	1.3	-

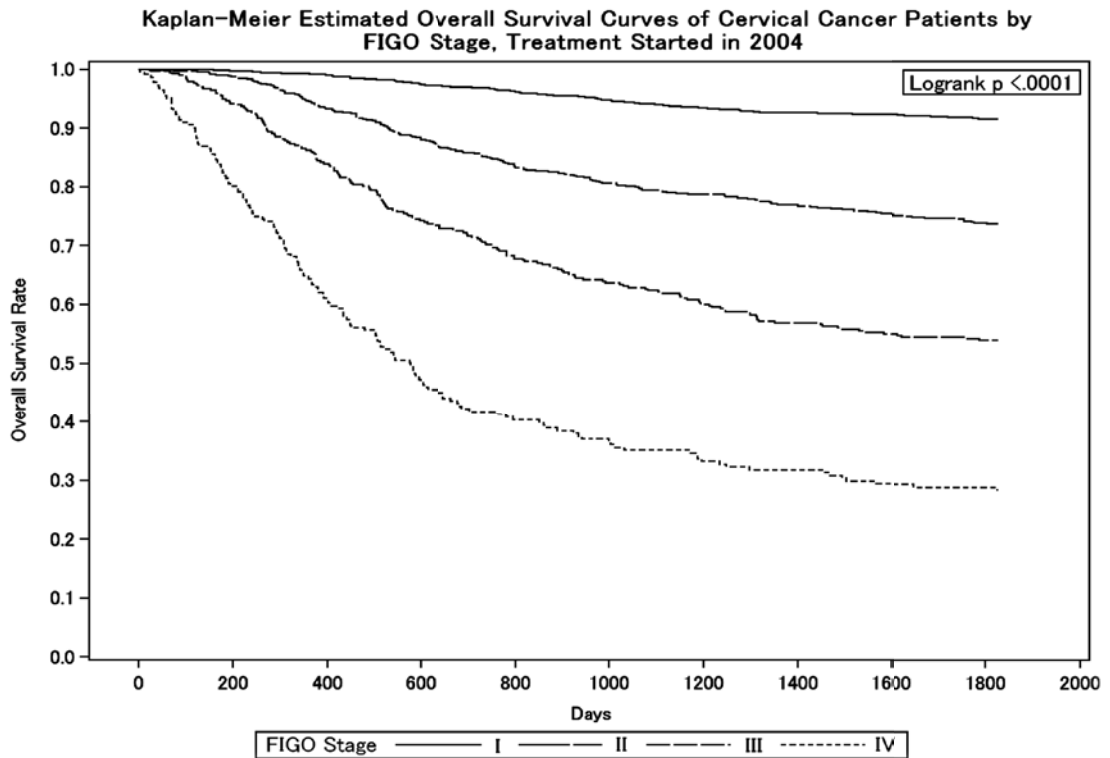
**Table 7. 5-Year Survival by First Therapy, Treatment Started in 2004**

FIGO Stage	Therapy	Patients treated		5-year survival
		No.	%	%
I	Surgery	1228	87.7	94.2
	Radiation	105	7.5	73.5
	(Radiation alone)	(16)	(1.14)	(77.0)
	Chemotherapy	63	4.5	67.7
	Others	4	0.3	100.0
II	Surgery	266	40.7	79.6
	Radiation	229	35.1	68.8
	(Radiation alone)	(22)	(3.37)	(50.9)
	Chemotherapy	156	23.9	70.2
	Others	2	0.3	100.0
III	Surgery	8	2.0	75.0
	Radiation	324	81.2	54.9
	(Radiation alone)	(30)	(7.52)	(46.2)
	Chemotherapy	67	16.8	46.8
	Others	0	0.0	-
IV	Surgery	14	6.3	24.5
	Radiation	148	66.1	29.8
	(Radiation alone)	(41)	(18.3)	(20.1)
	Chemotherapy	62	27.7	26.3
	Others	0	0.0	-

**Table 8. 5-Year Survival by TNM Classification, Treatment Started in 2004**

TNM Stage			Patients treated		5-year survival
			No.	%	%
T1a1	N0	M0	332	13.1	100.0
T1a2	N0	M0	34	1.3	100.0
T1b1	N0	M0	656	25.8	92.7
T1b2	N0	M0	140	5.5	81.3
T2a	N0	M0	125	4.9	82.8
T2b	N0	M0	338	13.3	76.3
T3a	N0	M0	16	0.6	60.0
T3b	N0	M0	192	7.6	62.2
T4	N0	M0	38	1.5	34.2
T1a1	N1	M0	1	0.0	100.0
T1b1	N1	M0	54	2.1	77.4
T1b2	N1	M0	44	1.7	54.3
T2a	N1	M0	29	1.1	72.4
T2b	N1	M0	126	5.0	64.6
T3a	N1	M0	6	0.2	33.3
T3b	N1	M0	149	5.9	45.8
T4	N1	M0	36	1.4	33.3
Any T	Any N	M1	224	8.8	32.9

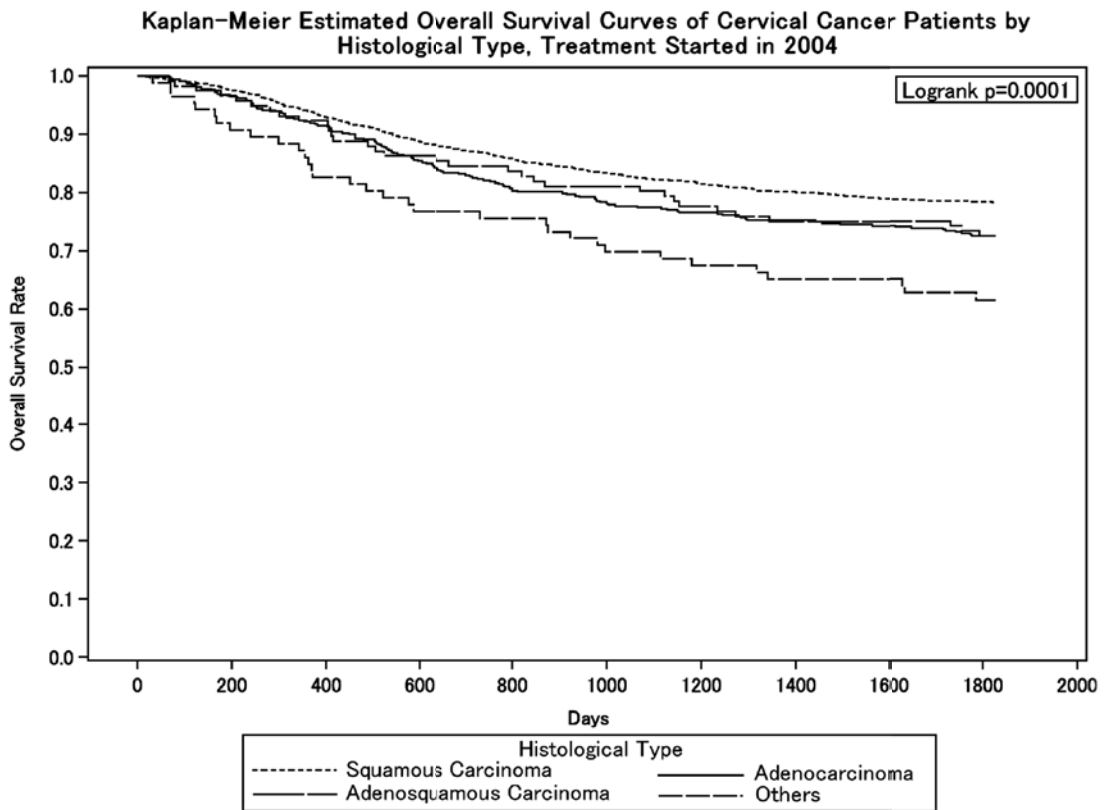
Figure 1.



Test of Equality over Strata			
Test	Chi-Square	DF	Pr > Chi-Square
Log-rank	813.9057	3	<.0001
Wilcoxon	839.5249	3	<.0001
-2Log (LR)	610.3217	3	<.0001

Adjustment for Multiple Comparisons for the Log-rank Test				
Strata Comparison		Chi-Square	p-Values	
FIGO Stage	FIGO Stage		Raw	Tukey-Kramer
I	II	152.9000	<.0001	<.0001
I	III	380.0000	<.0001	<.0001
I	IV	631.9000	<.0001	<.0001
II	III	32.1361	<.0001	<.0001
II	IV	74.8632	<.0001	<.0001
III	IV	5.5946	0.0180	0.0839

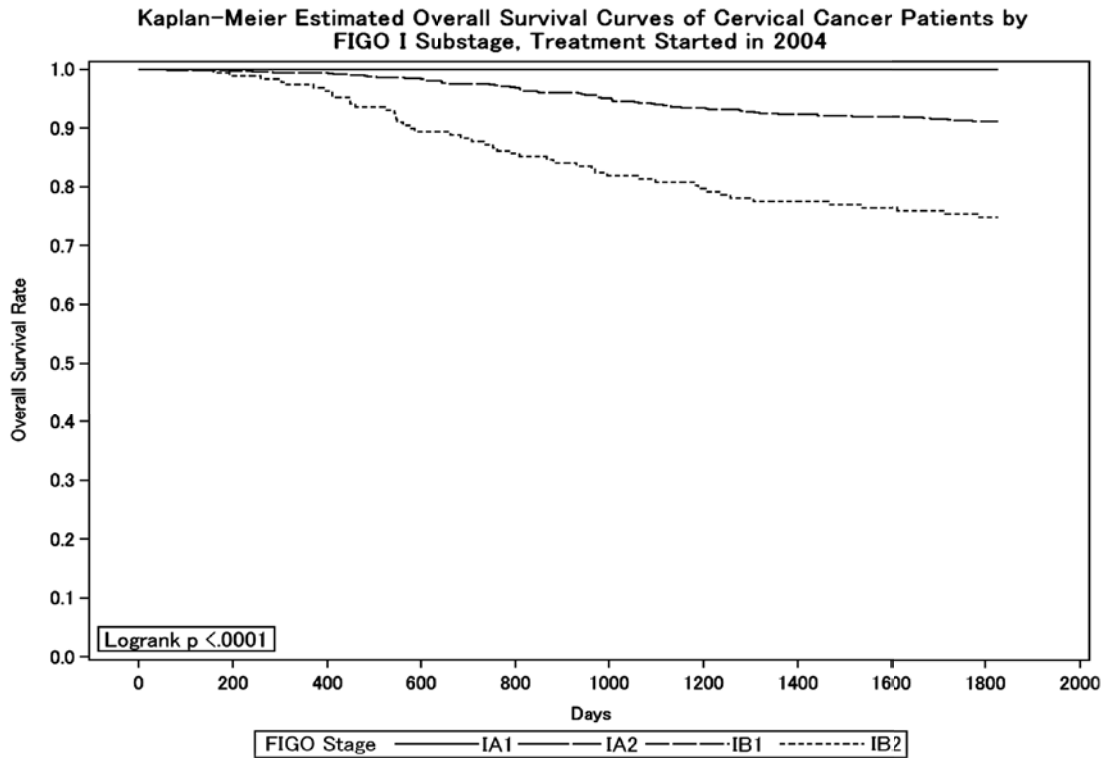
Figure 2.



Test of Equality over Strata			
Test	Chi-Square	DF	Pr > Chi-Square
Log-rank	20.9263	3	0.0001
Wilcoxon	21.1960	3	<.0001
-2Log (LR)	18.8532	3	0.0003

Adjustment for Multiple Comparisons for the Log-rank Test				
Strata Comparison		Chi-Square	p-Values	
Histological Type	Histological Type		Raw	Tukey-Kramer
Adenocarcinoma	Adenosquamous Carcinoma	1.9906	0.1583	0.4925
Adenocarcinoma	Others	0.3029	0.5821	0.9465
Adenocarcinoma	Squamous Carcinoma	10.5508	0.0012	0.0064
Adenosquamous Carcinoma	Others	2.1266	0.1448	0.4630
Adenosquamous Carcinoma	Squamous Carcinoma	11.7300	0.0006	0.0034
Others	Squamous Carcinoma	19.5955	<.0001	<.0001

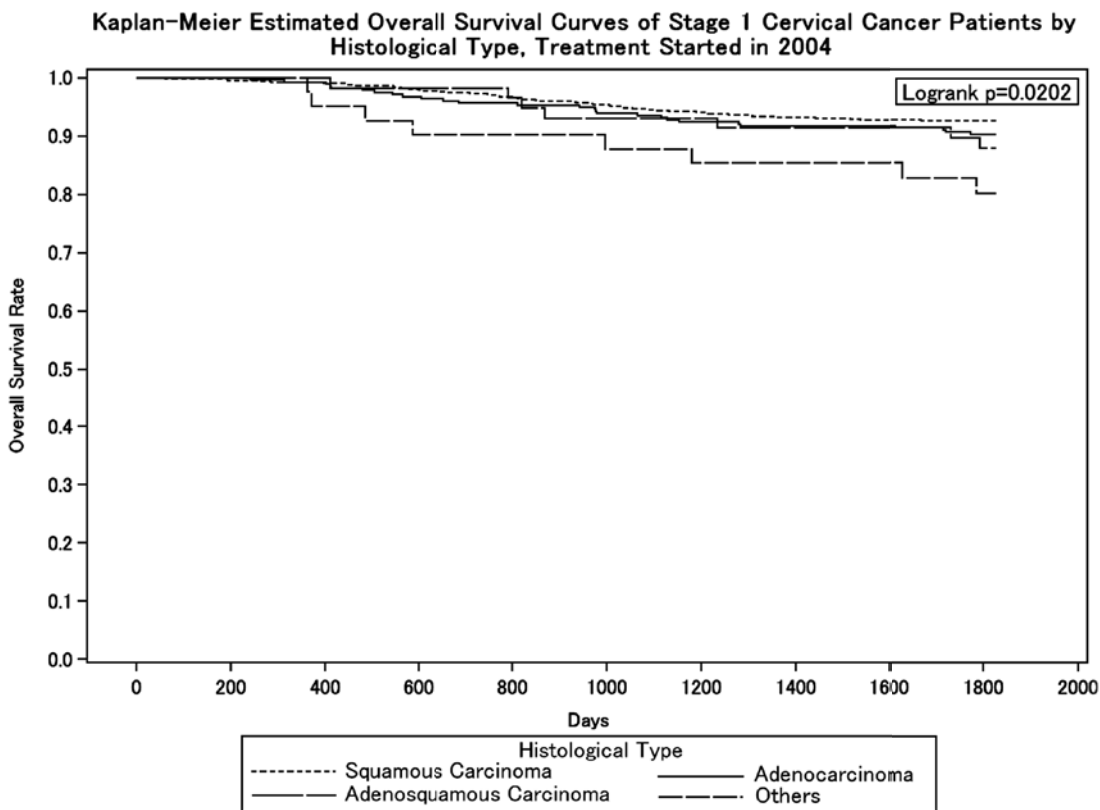
Figure 3.



Test of Equality over Strata			
Test	Chi-Square	DF	Pr > Chi-Square
Log-rank	113.7874	3	<.0001
Wilcoxon	115.0156	3	<.0001
-2Log (LR)	119.6579	3	<.0001

Adjustment for Multiple Comparisons for the Log-rank Test				
Strata Comparison		Chi-Square	p-Values	
FIGO Stage	FIGO Stage		Raw	Tukey-Kramer
1A1	1A2	31.3113	<.0001	<.0001
1A1	1B1	14.9490	0.0001	0.0006
1A1	1B2	99.2928	<.0001	<.0001
1A2	1B1	1.1320	0.2874	0.7115
1A2	1B2	81.1501	<.0001	<.0001
1B1	1B2	16.5387	<.0001	0.0003

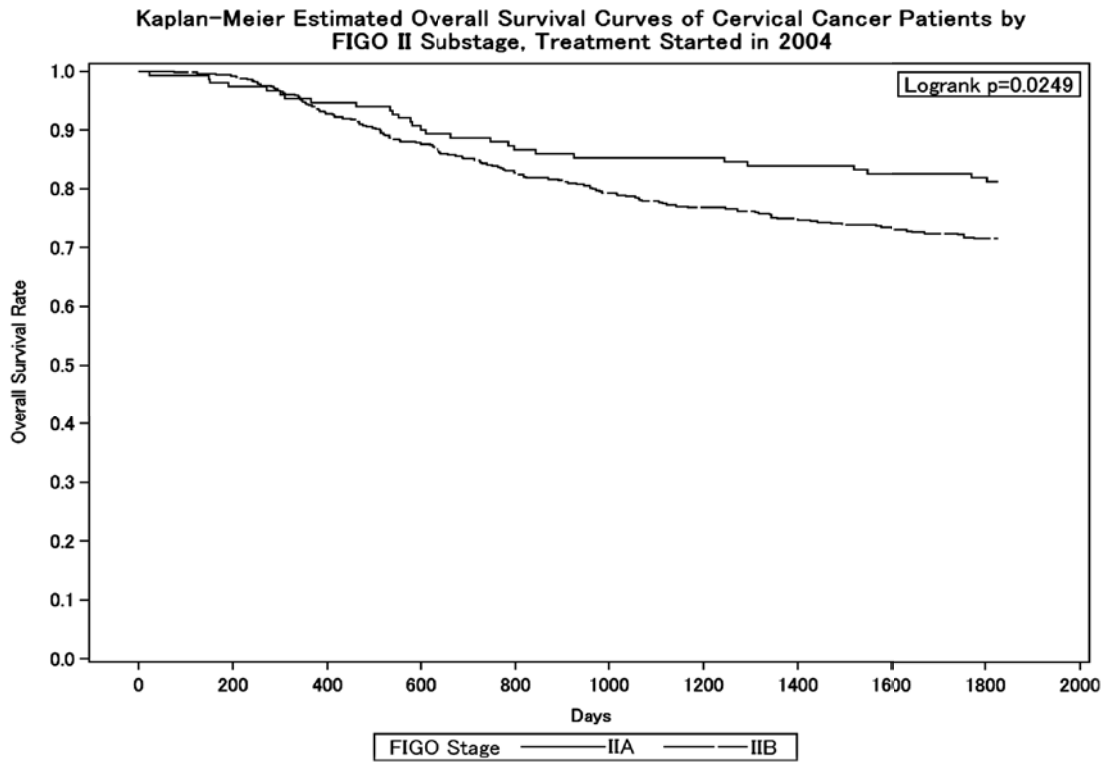
Figure 4.



Test of Equality over Strata			
Test	Chi-Square	DF	Pr > Chi-Square
Log-rank	9.8136	3	0.0202
Wilcoxon	9.6097	3	0.0222
-2Log (LR)	7.6739	3	0.0533

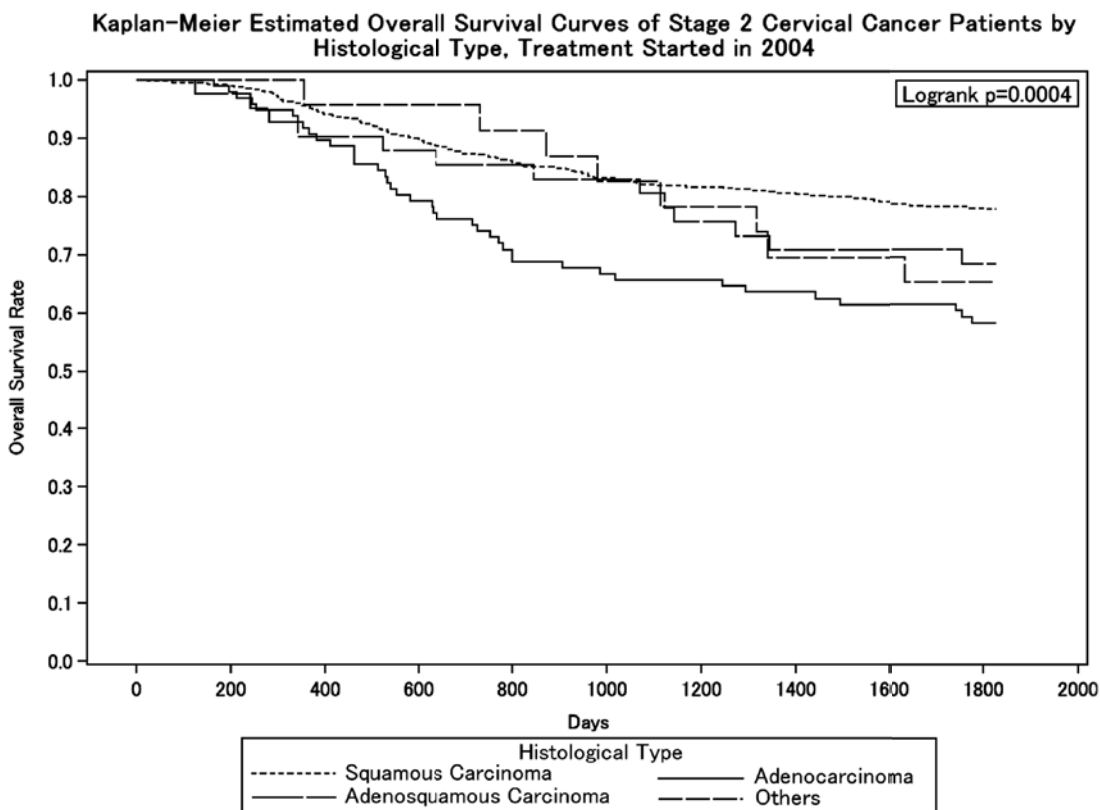
Adjustment for Multiple Comparisons for the Log-rank Test				
Strata Comparison		Chi-Square	p-Values	
Histological Type	Histological Type		Raw	Tukey-Kramer
Adenocarcinoma	Adenosquamous Carcinoma	0.0906	0.7634	0.9905
Adenocarcinoma	Others	0.0552	0.8142	0.9954
Adenocarcinoma	Squamous Carcinoma	2.6540	0.1033	0.3621
Adenosquamous Carcinoma	Others	0.8627	0.3530	0.7894
Adenosquamous Carcinoma	Squamous Carcinoma	4.6101	0.0318	0.1384
Others	Squamous Carcinoma	7.5988	0.0058	0.0298

Figure 5.



Test of Equality over Strata			
Test	Chi-Square	DF	Pr > Chi-Square
Log-rank	5.0316	1	0.0249
Wilcoxon	4.6562	1	0.0309
-2Log (LR)	5.7037	1	0.0169

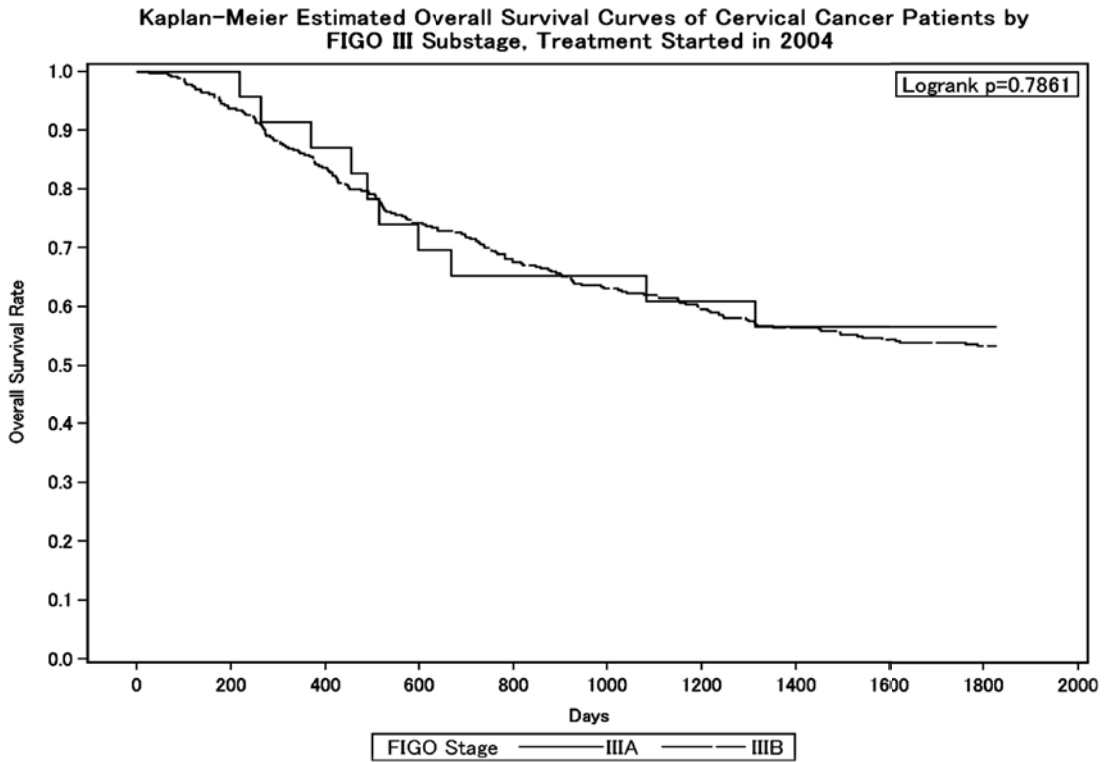
Figure 6.



Test of Equality over Strata			
Test	Chi-Square	DF	Pr > Chi-Square
Log-rank	18.4074	3	0.0004
Wilcoxon	17.8393	3	0.0005
-2Log (LR)	16.5497	3	0.0009

Adjustment for Multiple Comparisons for the Log-rank Test				
Strata Comparison		Chi-Square	p-Values	
Histological Type	Histological Type		Raw	Tukey-Kramer
Adenocarcinoma	Adenosquamous Carcinoma	7.0720	0.0078	0.0392
Adenocarcinoma	Others	9.1243	0.0025	0.0135
Adenocarcinoma	Squamous Carcinoma	18.3533	<.0001	0.0001
Adenosquamous Carcinoma	Others	0.0241	0.8767	0.9987
Adenosquamous Carcinoma	Squamous Carcinoma	10.3660	0.0013	0.0070
Others	Squamous Carcinoma	12.1178	0.0005	0.0028

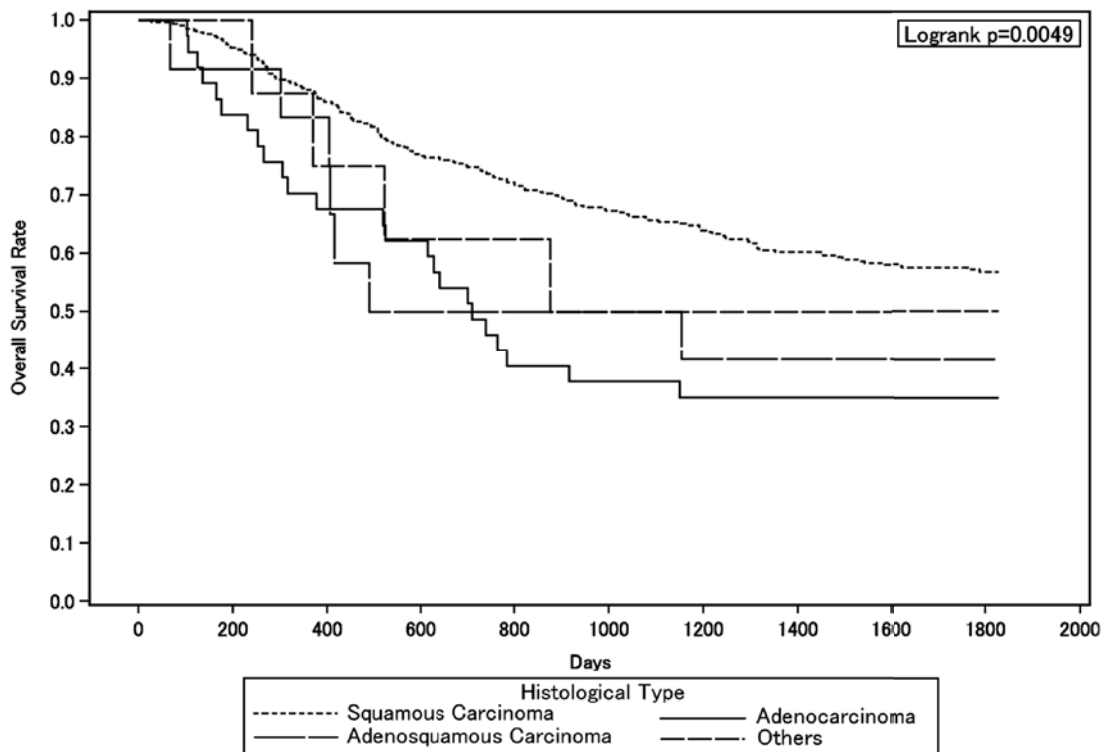
Figure 7.



Test of Equality over Strata			
Test	Chi-Square	DF	Pr > Chi-Square
Log-rank	0.0736	1	0.7861
Wilcoxon	0.0626	1	0.8025
-2Log (LR)	0.0937	1	0.7595

Figure 8.

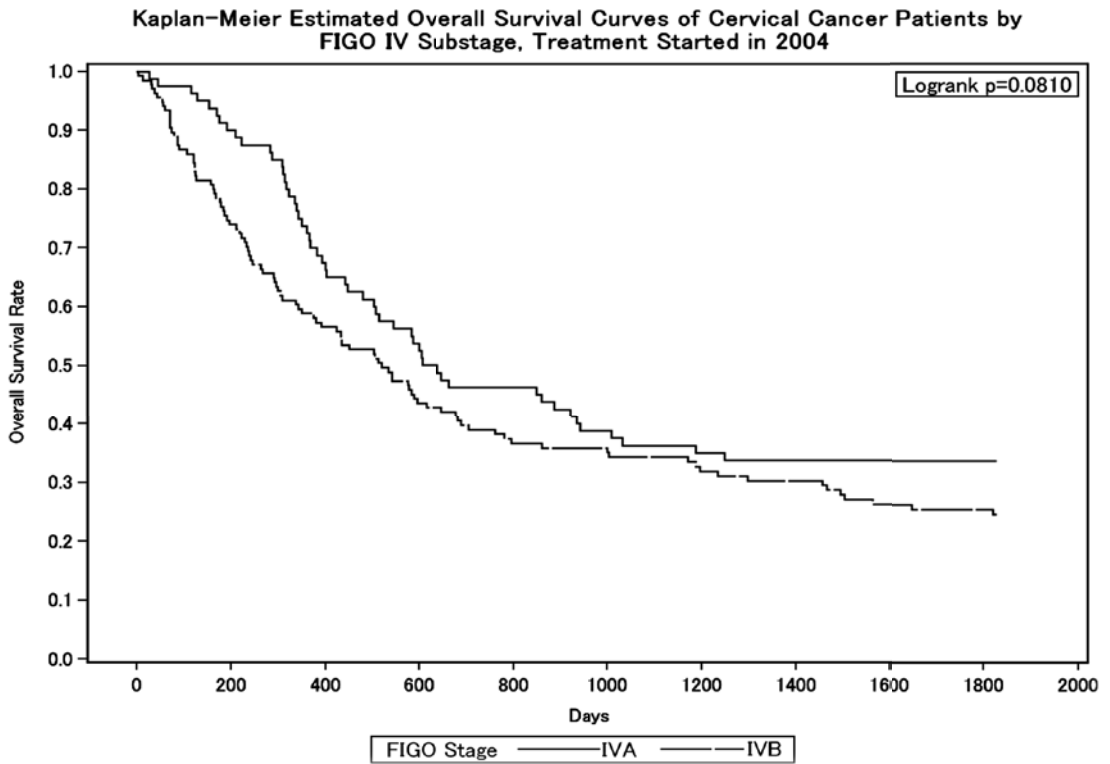
Kaplan-Meier Estimated Overall Survival Curves of Stage 3 Cervical Cancer Patients by Histological Type, Treatment Started in 2004



Test of Equality over Strata			
Test	Chi-Square	DF	Pr > Chi-Square
Log-rank	12.8648	3	0.0049
Wilcoxon	15.0461	3	0.0018
-2Log (LR)	11.8019	3	0.0081

Adjustment for Multiple Comparisons for the Log-rank Test				
Strata Comparison		Chi-Square	p-Values	
Histological Type	Histological Type		Raw	Tukey-Kramer
Adenocarcinoma	Adenosquamous Carcinoma	4.5180	0.0335	0.1449
Adenocarcinoma	Others	7.2191	0.0072	0.0363
Adenocarcinoma	Squamous Carcinoma	12.5915	0.0004	0.0022
Adenosquamous Carcinoma	Others	0.4595	0.4978	0.9055
Adenosquamous Carcinoma	Squamous Carcinoma	9.4986	0.0021	0.0111
Others	Squamous Carcinoma	8.3222	0.0039	0.0204

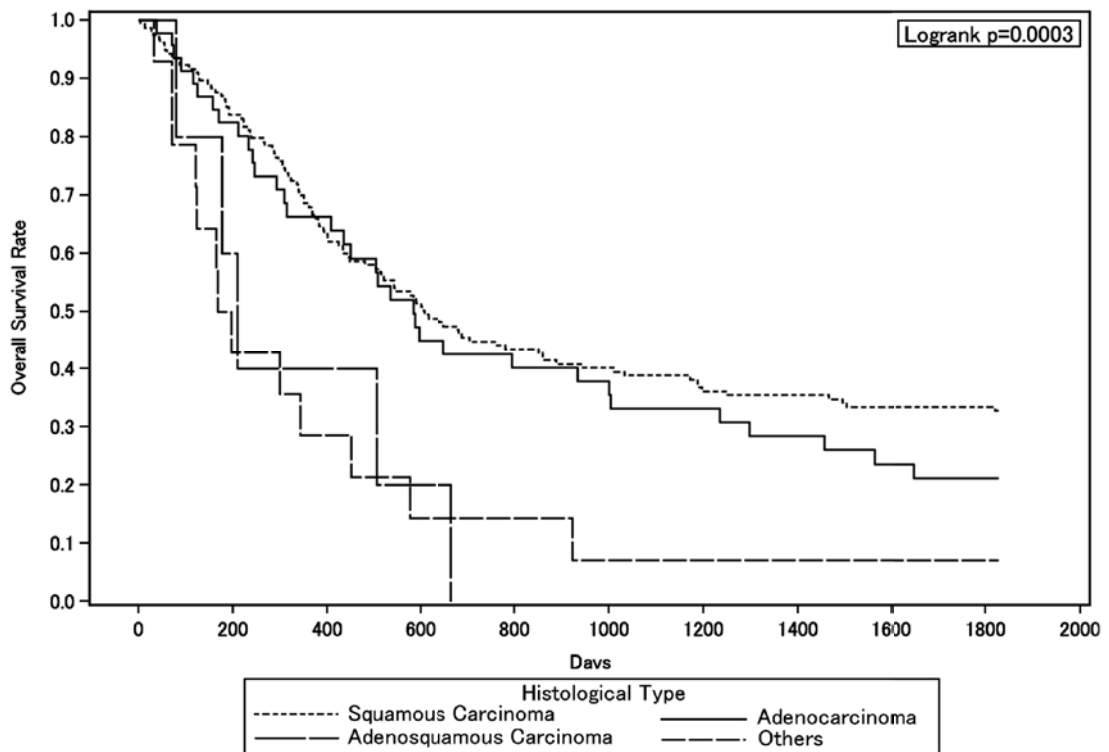
Figure 9.



Test of Equality over Strata			
Test	Chi-Square	DF	Pr > Chi-Square
Log-rank	3.0449	1	0.0810
Wilcoxon	4.8013	1	0.0284
-2Log (LR)	3.1299	1	0.0769

Figure 10.

Kaplan-Meier Estimated Overall Survival Curves of Stage 4 Cervical Cancer Patients by Histological Type, Treatment Started in 2004



Test of Equality over Strata			
Test	Chi-Square	DF	Pr > Chi-Square
Log-rank	18.4939	3	0.0003
Wilcoxon	18.2058	3	0.0004
-2Log (LR)	18.4861	3	0.0003

Adjustment for Multiple Comparisons for the Log-rank Test				
Strata Comparison		Chi-Square	p-Values	
Histological Type	Histological Type		Raw	Tukey-Kramer
Adenocarcinoma	Adenosquamous Carcinoma	0.0063	0.9367	0.9998
Adenocarcinoma	Others	0.8250	0.3637	0.8004
Adenocarcinoma	Squamous Carcinoma	2.5895	0.1076	0.3733
Adenosquamous Carcinoma	Others	3.1637	0.0753	0.2836
Adenosquamous Carcinoma	Squamous Carcinoma	8.1878	0.0042	0.0219
Others	Squamous Carcinoma	10.9346	0.0009	0.0052

## 子宮体癌治療成績

## Statement for the Year 2004, Inclusive, Corpus

Table A. 5-Year Results, Stage I-IV

A	B	C	D	E	F	G	H	I	J	K
Institution	Total No. Treated	no description	Alive with no Evidence of the Disease	Alive with Carcinoma	Alive with or without Carcinoma Unknown	Died of Carcinoma	Died of Other Malignant Tumor	Died of Intercurrent Disease	Cause of Death Unknown	Lost to follow-up
○ 010003	HOKKAIDO CANCER CENTER	35	0	26	0	0	8	1	0	0
010025	SAPPORO MED. UNIV.	40	0	22	0	0	1	1	0	16
○ 010027	HOKKAIDO UNIV.	40	0	24	2	1	6	0	0	7
○ 010028	KKR SAPPORO MED. CENTER	4	0	2	0	1	1	0	0	0
010037	ASAHIKAWA CITY HOSP.	15	15	0	0	0	0	0	0	0
○ 010040	ASAHIKAWA MED. COLL.	16	0	14	0	0	1	0	0	1
010045	KUSHIRO ROSAI HOSP.	3	3	0	0	0	0	0	0	0
010051	MURORAN CITY GENERAL HOSP.	2	2	0	0	0	0	0	0	0
○ 020008	MUTSU GENERAL HOSP.	1	0	0	0	0	0	1	0	0
○ 020012	HIROSAKI UNIV.	15	0	13	2	0	0	0	0	0
○ 020017	MISAWA CITY HOSP.	5	0	4	0	0	1	0	0	0
○ 040004	TOHOKU UNIV.	74	0	61	1	0	8	0	0	4
○ 040013	SENDAI MED. CENTER	21	0	15	0	0	5	1	0	0
○ 050001	AKITA RED CROSS HOSP.	11	0	10	0	0	1	0	0	0
○ 050003	AKITA UNIV.	32	0	23	0	0	4	0	0	5
○ 060002	YAMAGATA PREF. CENTRAL HOSP.	7	0	5	0	0	1	0	0	1
060005	YAMAGATA UNIV.	25	24	1	0	0	0	0	0	0
○ 070003	FUKUSHIMA MED. UNIV.	36	0	25	1	0	2	0	1	7
○ 080001	TSUCHIURA KYODO GENERAL HOSP.	12	0	12	0	0	0	0	0	0
080003	KASUMIGAURA MED. CENTER	14	14	0	0	0	0	0	0	0
○ 080007	TSUKUBA UNIV.	39	0	29	1	0	6	0	0	3
080017	MITO MED. CENTER	14	14	0	0	0	0	0	0	0
080021	HITACHI GENERAL HOSP.	22	19	0	0	0	1	0	0	2
○ 080031	TSUKUBA MED. CENTER	2	0	2	0	0	0	0	0	0
○ 090004	DOKKYO MED. UNIV.	30	0	15	3	2	5	0	0	5
○ 090005	SAISEIKAI UTSUNOMIYA HOSP.	8	0	5	1	0	2	0	0	0
○ 090011	ASHIKAGA RED CROSS HOSP.	13	0	5	2	0	3	0	2	1
090015	JICHI MED. UNIV.	45	0	26	1	0	4	1	1	12
○ 090016	TOCHIGI CANCER CENTER	16	0	12	0	0	4	0	0	0
○ 100012	GUNMA UNIV.	23	0	19	0	1	2	0	0	1
100022	GUNMA PREF. CANCER CENTER	37	0	13	2	0	4	0	0	18
○ 110008	SAITAMA SHAKAI HOKEN HOSP.	2	0	2	0	0	0	0	0	0
○ 110014	KOSHIGAYA MUNL HOSP.	11	0	8	0	0	1	0	0	2
110022	SAITAMA MED. CENTER	38	38	0	0	0	0	0	0	0
○ 110023	SAITAMA NATIONAL HOSP.	20	0	11	0	1	5	0	0	3
110027	NATIONAL DEFENSE MED. COLL.	35	35	0	0	0	0	0	0	0
○ 110030	SAITAMA CANCER CENTER	55	0	46	2	0	5	1	0	1
○ 120005	CHIBA UNIV.	31	0	20	1	0	4	0	0	6
120009	NIPPON MED. SCH. CHIBA HOKUSOU HOSP.	12	11	0	0	0	1	0	0	0
○ 120012	MATSUDO CITY HOSP.	23	0	16	0	0	4	0	0	3
120021	JIKEI UNIV. KASHIWA HOSP.	60	0	30	7	2	7	0	0	14
○ 120023	JUNTENDO UNIV. URAYASU HOSP.	18	1	15	0	1	1	0	0	0
○ 120029	ASAHI CENTRAL HOSP.	20	0	18	0	0	0	0	0	2
○ 120035	KAMEDA MED. CENTER	14	0	11	0	0	2	0	0	1
○ 120042	CHIBA CANCER CENTER	23	0	18	1	0	3	0	0	1
○ 120043	NATIONAL INS. OF RADIOLOGICAL SCIENCES	2	0	1	0	1	0	0	0	0
○ 130009	NATIONAL CANCER CENTER	77	0	64	3	0	8	1	0	1
130013	JIKEI UNIV.	39	0	20	0	0	7	0	1	11
○ 130023	JUNTENDO UNIV.	26	0	21	0	0	4	1	0	0
130024	TOKYO MED. DENT. UNIV.	14	14	0	0	0	0	0	0	0
130025	NIPPON MED. SCH.	17	0	7	0	1	3	0	0	6
130026	TOKYO UNIV.	39	3	20	0	0	7	1	0	8
○ 130029	TOKYO WOMENS MED. UNIV. MED. CENTER EAST	13	0	11	0	0	1	0	1	0
130034	JIKEI UNIV. KATSUSHIKA MED. CENTER	19	19	0	0	0	0	0	0	0

	A	B	C	D	E	F	G	H	I	J	K
	Institution	Total No. Treated	no description	Alive with no Evidence of the Disease	Alive with Carcinoma	Alive with or without Carcinoma Unknown	Died of Carcinoma	Died of Other Malignant Tumor	Died of Intercurrent Disease	Cause of Death Unknown	Lost to follow-up
○	130044 NTT MED. CENTER TOKYO	18	0	13	0	0	2	0	1	0	2
	130046 SHOWA UNIV.	10	0	4	0	0	0	0	0	0	6
○	130050 TOHO UNIV. OMORI HOSP.	15	0	11	0	0	1	0	0	0	3
○	130055 RED CROSS MED. CENTER	10	0	9	0	0	0	0	0	0	1
○	130063 KOSEI CENTRAL HOSP.	2	0	1	1	0	0	0	0	0	0
	130074 TOKYO MED. UNIV.	22	22	0	0	0	0	0	0	0	0
○	130077 KEIO UNIV.	69	0	44	5	0	7	0	0	0	13
	130080 NATIONAL CENTER FOR GLOBAL HEALTH AND MED.	7	7	0	0	0	0	0	0	0	0
	130081 TOKYO WOMENS MED. UNIV.	19	19	0	0	0	0	0	0	0	0
	130085 KOSEI HOSP.	1	1	0	0	0	0	0	0	0	0
○	130092 TEIKYO UNIV.	19	0	12	1	0	2	1	0	0	3
○	130095 NIHON UNIV.	19	0	15	0	0	1	0	0	0	3
	130099 MUSASHINO RED CROSS HOSP.	37	34	0	0	0	2	0	0	0	1
	130100 KYORIN UNIV.	9	0	4	1	0	1	0	0	0	3
	130106 NATIONAL DISASTER MED. CENTER	2	2	0	0	0	0	0	0	0	0
○	130112 MACHIDA MUNI. HOSP.	7	0	4	2	0	0	0	0	0	1
	130116 JIKEI UNIV. 3RD HOSP.	16	0	11	0	1	0	0	0	0	4
○	130119 NIPPON MED. SCH. TAMA NAGAYAMA HOSP.	7	0	5	0	0	2	0	0	0	0
○	130122 TOKYO METRO. KOMAGOME HOSP.	27	0	19	2	0	4	0	0	0	2
	130124 KYOUNDO HOSP.	8	0	6	0	0	0	0	0	0	2
○	130125 CANCER INST. HOSP.	95	0	74	1	0	9	0	0	1	10
	130135 TAMA-NAMBU CHIHI HOSP.	13	10	0	0	0	0	0	0	0	3
	140001 KAWASAKI MUNI. HOSP.	9	0	5	1	0	1	0	0	0	2
	140006 NIPPON MED. SCH. MUSASHI KOSUGI HOSP.	9	0	5	1	0	0	0	0	0	3
○	140008 KANTO ROSAI HOSP.	7	0	5	0	0	1	0	0	0	1
	140012 ST. MARIANNA UNIV.	33	33	0	0	0	0	0	0	0	0
○	140017 SHOWA UNIV. FUJIGAOKA HOSP.	15	0	12	1	0	2	0	0	0	0
	140020 KITAZATO UNIV.	67	57	0	0	0	1	0	0	0	9
○	140029 YOKOHAMA CITY UNIV.	29	0	22	0	0	5	0	0	0	2
	140030 YOKOHAMA MINAMI KYOSAI HOSP.	18	1	10	1	0	3	0	0	0	3
○	140035 YOKOHAMA MUNI. HOSP.	8	0	6	0	0	1	1	0	0	0
	140037 ST. MARIANNA UNIV. YOKOHAMA CITY SEIBU HOSP.	10	10	0	0	0	0	0	0	0	0
	140038 YAMATO MUNI. HOSP.	6	6	0	0	0	0	0	0	0	0
	140039 ATSUGI CITY HOSP.	21	21	0	0	0	0	0	0	0	0
	140043 YOKOHAMA SAKAE KYOSAI HOSP.	4	4	0	0	0	0	0	0	0	0
	140049 HIRATSUKA CITY HOSP.	7	7	0	0	0	0	0	0	0	0
○	140054 ISEHARA KYODO HO S.P.	4	0	3	0	0	1	0	0	0	0
	140055 TOKAI UNIV.	28	1	13	0	0	6	0	0	0	8
○	140059 KANAGAWA CANCER CENTER	61	0	52	0	0	9	0	0	0	0
○	140061 YOKOHAMA CITY UNIV. MED. CENTER	5	0	5	0	0	0	0	0	0	0
	150002 YAMANASHI PREF. CENTRAL HOSP.	23	23	0	0	0	0	0	0	0	0
○	150006 UNIV. OF YAMANASHI	11	0	9	1	0	1	0	0	0	0
○	160001 NAGANO RED CROSS HOSP.	26	0	21	0	0	2	0	0	0	3
○	160006 SHINSHU UNIV.	25	0	13	1	0	6	0	0	0	5
	160014 MATSUMOTO MED. CENTER MATSUMOTO HOSP.	5	5	0	0	0	0	0	0	0	0
	160022 NAGANO MUNI. HOSP.	3	3	0	0	0	0	0	0	0	0
○	170006 FUJI CITY GENERAL HOSP.	7	0	5	1	0	0	0	0	0	1
○	180001 NAGAOKA RED CROSS HOSP.	20	0	18	0	0	1	0	0	0	1
	180009 NIIGATA UNIV.	38	38	0	0	0	0	0	0	0	0
○	180010 NIIGATA CANCER CENTER HOSP.	46	0	39	0	0	6	1	0	0	0
	190001 TOYAMA UNIV.	15	0	8	2	0	1	0	0	0	4
○	190002 TOYAMA RED CROSS HOSP.	9	0	6	0	0	2	1	0	0	0
	190003 TOYAMA PREF. CENTRAL HOSP.	17	17	0	0	0	0	0	0	0	0
○	200001 KANAZAWA MED. UNIV.	9	0	7	0	0	1	0	0	0	1
	200002 KANAZAWA MED. CENTER	11	0	5	0	1	0	0	0	0	5
○	200004 KANAZAWA UNIV.	16	0	13	1	0	2	0	0	0	0
	210003 FUKUI UNIV.	6	4	0	0	0	1	0	0	0	1
○	210004 FUKUI RED CROSS HOSP.	4	0	3	0	1	0	0	0	0	0
	220002 GIFU UNIV.	9	0	5	1	0	1	0	0	0	2

	A	B	C	D	E	F	G	H	I	J	K
	Institution	Total No. Treated	no description	Alive with no Evidence of the Disease	Alive with Carcinoma	Alive with or without Carcinoma Unknown	Died of Carcinoma	Died of Other Malignant Tumor	Died of Intercurrent Disease	Cause of Death Unknown	Lost to follow-up
	230001 TOYOHASHI MUNL. HOSP.	31	24	0	0	0	6	0	0	0	1
○	230014 RED CROSS NAGOYA DAIICHI HOSP.	16	0	15	0	0	1	0	0	0	0
	230022 MIDORI MUNL. HOSP.	8	8	0	0	0	0	0	0	0	0
	230024 NAGOYA MED. CENTER	11	11	0	0	0	0	0	0	0	0
○	230031 NAGOYA UNIV.	21	0	14	1	0	4	0	0	0	2
○	230034 NAGOYA CITY UNIV.	18	0	13	1	0	4	0	0	0	0
○	230035 FUJITA HEALTH UMIN.	23	0	14	1	1	3	2	0	0	2
	230040 AICHI MED. UNIV.	14	8	0	0	0	2	0	0	0	4
○	230052 AICHI CANCER CENTER	73	0	56	4	0	13	0	0	0	0
	240002 MIE PREF. GENERAL MED. CENTER	20	0	12	2	0	4	0	0	0	2
○	240003 YOKKAICHI MUNL. HOSP.	6	0	2	2	0	1	0	1	0	0
○	240015 ISE RED CROSS HOSP.	16	0	11	2	0	1	1	0	0	1
○	250001 OHTSU RED CROSS HOSP.	6	0	4	1	0	1	0	0	0	0
	260002 KYOTO 2ND RED CROSS HOSP.	15	0	13	0	0	1	0	0	0	1
○	260003 KYOTO PREF. UNIV. OF MED.	7	0	6	0	0	0	0	0	0	1
	260006 KYOTO CITY HOSP.	9	9	0	0	0	0	0	0	0	0
	260007 KYOTO 1ST RED CROSS HOSP.	22	5	12	0	1	2	0	0	0	2
○	260009 KYOTO UNIV.	24	0	19	0	0	2	0	1	0	2
○	260013 KYOTO KATSURA HOSP.	3	0	1	0	0	2	0	0	0	0
○	260017 SAISEIKAI KYOTO HOSP.	5	0	3	0	0	2	0	0	0	0
○	270003 KITANO HOSP.	20	0	15	1	0	1	0	0	0	3
○	270007 OSAKA CITY GENERAL HOSP.	23	0	15	2	0	4	0	1	0	1
○	270009 OSAKA NATIONAL HOSP.	38	0	31	0	0	3	0	1	0	3
	270013 OSAKA POLICE HOSP.	12	0	7	0	0	0	0	0	0	5
	270016 OSAKA CITY UNIV.	27	0	18	1	0	1	1	0	0	6
	270035 OSAKA UNIV.	32	0	19	0	1	4	0	0	0	8
○	270041 OSAKA MED. COLL.	36	0	27	0	0	4	0	1	0	4
	270042 KANSAI MED. UNIV.	15	0	3	0	0	0	0	0	0	12
	270056 KINKI UNIV.	29	0	19	1	0	0	0	1	0	8
○	270062 OSAKA ROUSAI HOSP.	42	0	30	0	0	4	0	0	0	8
○	270101 OSAKA MED. CENTER FOR CANCER AND CVD	38	0	25	0	0	7	1	0	0	5
	280001 KOBE UNIV.	15	0	8	0	0	0	0	0	0	7
○	280002 KOBE CITY MED. CENTER GENERAL HOSP.	16	0	10	0	1	2	0	0	1	2
○	280010 KOBE MED. CENTER	10	0	7	0	1	0	1	0	0	1
○	280015 KANSAI ROSAI HOSP.	18	0	11	2	0	4	0	1	0	0
	280021 HYOGO MED. COLL.	22	22	0	0	0	0	0	0	0	0
○	280028 TOYOOKA PUBLIC HOSP.	13	0	10	0	1	0	0	0	0	2
	280030 HIMEJI RED CROSS HOSP.	24	22	0	0	0	0	0	0	0	2
	280031 HIMEJI MED. CENTER	7	7	0	0	0	0	0	0	0	0
○	280033 HYOGO CANCER CENTER	67	0	51	5	1	9	0	1	0	0
○	290003 NARA PREF. NARA HOSP.	17	0	12	1	0	4	0	0	0	0
○	290004 TENRI HOSP.	17	0	13	0	0	1	0	0	0	3
	290007 NARA MED. UNIV.	17	0	0	0	0	0	0	0	0	17
	290009 MIMURO HOSP.	1	1	0	0	0	0	0	0	0	0
	300002 JAPAN RED CROSS WAKAYAMA MED. CENTER	26	0	15	1	1	3	0	0	0	6
○	300003 WAKAYAMA MED. UNIV.	19	0	15	1	0	1	0	0	0	2
○	310001 TOTTORI PREF. CENTRAL HOSP.	2	0	2	0	0	0	0	0	0	0
○	310007 TOTTORI UNIV.	11	0	8	1	0	2	0	0	0	0
	320003 SHIMANE UNIV.	7	0	6	0	0	0	0	0	0	1
○	330002 OKAYAMA RED CROSS HOSP.	6	0	4	0	1	0	0	0	0	1
○	330003 KAWASAKI HOSP.	1	0	0	0	0	1	0	0	0	0
○	330004 OKAYAMA SAISEIKAI GENERAL HOSP.	13	0	9	0	1	0	0	1	0	2
○	330006 OKAYAMA UNIV.	27	0	22	1	0	1	0	0	0	3
	330008 KURASHIKI CENTRAL HOSP.	24	0	15	0	0	4	0	0	0	5
	330009 KAWASAKI MED. SCH.	11	11	0	0	0	0	0	0	0	0
	330010 KURASIKI MED. CENTER	22	22	0	0	0	0	0	0	0	0
○	340001 FUKUYAMA MED. CENTER	20	0	15	0	0	5	0	0	0	0
	340002 ONOMICHI GENERAL HOSP.	9	9	0	0	0	0	0	0	0	0
○	340007 HIROSHIMA CITY HOSP.	20	0	15	1	0	1	0	0	0	3

	A	B	C	D	E	F	G	H	I	J	K
	Institution	Total No. Treated	no description	Alive with no Evidence of the Disease	Alive with Carcinoma	Alive with or without Carcinoma Unknown	Died of Carcinoma	Died of Other Malignant Tumor	Died of Intercurrent Disease	Cause of Death Unknown	Lost to follow-up
○	340008 HIROSHIMA RED CROSS HOSP.	6	0	5	0	1	0	0	0	0	0
○	340010 HIROSHIMA CITY ASA HOSP.	16	0	10	1	0	2	0	0	0	3
○	340012 HIROSHIMA UNIV.	16	0	15	0	0	1	0	0	0	0
○	340014 HIROSHIMA PREF. HOSP.	22	0	18	0	0	2	0	0	2	0
○	340015 KURE MED. CENTER	26	0	25	0	0	1	0	0	0	0
	340017 KURE KYOSAI HOSP.	6	6	0	0	0	0	0	0	0	0
	340018 HIROSHIMA GENERAL HOSP.	8	0	4	0	0	2	0	0	0	2
	340031 HIGASHIHIROSHIMA MED. CENTER	6	6	0	0	0	0	0	0	0	0
	350003 TOKUYAMA CENTRAL HOSP.	17	17	0	0	0	0	0	0	0	0
○	350008 YAMAGUCHI RED CROSS HOSP.	6	0	4	0	0	1	0	0	0	1
○	350009 YAMAGUCHI UNIV.	13	0	8	1	0	1	0	1	0	2
○	360003 TOKUSHIMA UNIV.	24	0	18	3	0	1	1	0	0	1
○	360005 TOKUSHIMA PREF. CENTRAL HOSP.	6	0	2	1	0	2	0	0	0	1
○	370001 TAKAMATSU RED CROSS HOSP.	11	0	8	0	0	2	0	0	0	1
	370003 KAGAWA PREF. CENTRAL HOSP.	20	20	0	0	0	0	0	0	0	0
○	380001 SHIKOKU CANCER CENTER	55	1	41	3	0	7	1	1	0	1
	380002 EHIME PREF. CENTRAL HOSP.	4	4	0	0	0	0	0	0	0	0
○	380005 MATSUYAMA RED CROSS HOSP.	4	0	4	0	0	0	0	0	0	0
	380006 EHIME UNIV.	18	0	12	1	0	1	0	0	0	4
○	390003 KOCHI HEALTH SCIENCES CENTER	8	0	8	0	0	0	0	0	0	0
○	390006 KOCHI UNIV.	15	0	7	1	0	3	1	0	0	3
○	400007 KYUSHU KOSEINENKIN HOSP.	19	0	13	2	0	3	0	0	0	1
○	400008 UNIV. OCCUPATIONAL & ENVIRONMENTAL HEALTH	26	0	20	0	0	4	0	1	0	1
	400010 KYUSHU MED. CENTER	14	0	10	0	0	1	0	0	0	3
○	400012 KYUSHU UNIV.	38	0	27	3	1	6	1	0	0	0
○	400013 FUKUOKA UNIV.	27	0	15	1	1	6	0	1	0	3
○	400014 FUKUOKA RED CROSS HOSP.	14	0	11	1	0	2	0	0	0	0
○	400020 KURUME UNIV.	26	0	16	0	0	7	0	0	0	3
○	400040 KYUSHU CANCER CENTER	47	0	32	2	0	7	0	0	0	6
	410002 SAGA PREF. HOSP. KOSEIKAN	8	8	0	0	0	0	0	0	0	0
○	410005 SAGA UNIV.	17	0	13	1	0	1	0	0	0	2
	420001 NAGASAKI MUNI. HOSP.	7	0	3	1	0	0	0	0	0	3
○	420002 NAGASAKI UNIV.	19	0	14	1	0	3	0	0	0	1
	420003 RED CROSS NAGASAKI ATOMIC BOMB HOSP.	9	0	5	0	0	2	0	0	0	2
	420006 SASEBO KYOSAI HOSP.	11	0	8	0	0	0	0	0	0	3
○	430001 KUMAMOTO MED. CENTER	30	0	25	1	0	2	0	0	0	2
○	430002 KUMAMOTO UNIV.	24	0	10	1	0	7	1	1	0	4
○	430003 KUMAMOTO CITY HOSP.	28	0	21	1	0	3	1	0	0	2
○	440002 OITA PREF. HOSP.	18	0	12	0	0	3	0	0	0	3
○	450001 MIYAZAKI PREF. HOSP.	16	0	10	0	0	3	0	0	0	3
	460001 KAGOSHIMA UNIV.	19	0	10	1	1	1	0	0	0	6
	460004 KAGOSHIMA CITY HOSP.	41	0	23	0	0	5	0	0	0	13
○	470008 RYUKYU UNIV.	28	0	19	1	0	4	0	1	0	3
○	470010 OKINAWA PREF. CHUBU HOSP.	13	0	7	0	0	3	1	0	0	2
	Total	4266	758	2409	114	28	432	25	22	5	473

Table 1. No. of Patients by Stage and Age

Age		~19		20~29		30~39		40~49		50~59		60~69		70~79		80~		Total	
		No.	%	No.	%	No.	%	No.	%	No.	%	No.	%	No.	%	No.	%	No.	%
I	A	1	0.0	20	0.5	98	2.3	153	3.6	289	6.8	147	3.5	59	1.4	10	0.2	777	18.2
	B	0	0.0	2	0.1	68	1.6	163	3.8	574	13.5	415	9.7	170	4.0	30	0.7	1422	33.3
	C	0	0.0	0	0.0	12	0.3	30	0.7	160	3.8	176	4.1	107	2.5	27	0.6	512	12.0
	not cl.	0	0.0	0	0.0	0	0.0	4	0.1	3	0.1	1	0.0	2	0.1	0	0.0	10	0.2
	total	1	0.0	22	0.5	178	4.2	350	8.2	1026	24.1	739	17.3	338	7.9	67	1.6	2721	63.8
II	A	0	0.0	2	0.1	8	0.2	24	0.6	47	1.1	37	0.9	26	0.6	3	0.1	147	3.5
	B	0	0.0	1	0.0	13	0.3	36	0.8	68	1.6	53	1.2	37	0.9	12	0.3	220	5.2
	not cl.	0	0.0	0	0.0	1	0.0	1	0.0	3	0.1	2	0.1	1	0.0	3	0.1	11	0.3
	total	0	0.0	3	0.1	22	0.5	61	1.4	118	2.8	92	2.2	64	1.5	18	0.4	378	8.9
III	A	0	0.0	1	0.0	21	0.5	64	1.5	179	4.2	108	2.5	47	1.1	16	0.4	436	10.2
	B	0	0.0	0	0.0	1	0.0	0	0.0	4	0.1	8	0.2	4	0.1	0	0.0	17	0.4
	C	0	0.0	8	0.2	11	0.3	33	0.8	180	4.2	117	2.7	50	1.2	4	0.1	403	9.5
	not cl.	0	0.0	0	0.0	0	0.0	0	0.0	7	0.2	3	0.1	2	0.1	3	0.1	15	0.4
	total	0	0.0	9	0.2	33	0.8	97	2.3	370	8.7	236	5.5	103	2.4	23	0.5	871	20.4
IV	A	0	0.0	0	0.0	0	0.0	0	0.0	11	0.3	4	0.1	1	0.0	3	0.1	19	0.5
	B	0	0.0	0	0.0	12	0.3	27	0.6	89	2.1	75	1.8	51	1.2	14	0.3	268	6.3
	not cl.	0	0.0	0	0.0	0	0.0	2	0.1	3	0.1	2	0.1	2	0.1	0	0.0	9	0.2
	total	0	0.0	0	0.0	12	0.3	29	0.7	103	2.4	81	1.9	54	1.3	17	0.4	296	6.9
Total		1	0.0	34	0.8	245	5.7	537	12.6	1617	37.9	1148	26.9	559	13.1	125	2.9	4266	

Table 2. Type of Treatment

Treatment FIGO Stage		Surgery															
		Alone		Rad.		Chem.Immun. Hormon		Other		Rad. Chem.Immun. Hormon		Rad. Other		Chem.Immun. Hormon, Other		Rad. Chem.Immun. Hormon, Other	
		No.	%	No.	%	No.	%	No.	%	No.	%	No.	%	No.	%	No.	%
I	A	669	15.7	3	0.1	61	1.4	0	0.0	0	0.0	0	0.0	0	0.0	0	0.0
	B	1111	26.0	27	0.6	267	6.3	1	0.0	6	0.1	0	0.0	0	0.0	0	0.0
	C	167	3.9	46	1.1	283	6.6	0	0.0	7	0.2	0	0.0	1	0.0	0	0.0
	not cl.	6	0.1	0	0.0	2	0.1	0	0.0	1	0.0	0	0.0	0	0.0	0	0.0
	total	1953	45.8	76	1.8	613	14.4	1	0.0	14	0.3	0	0.0	1	0.0	0	0.0
II	A	68	1.6	15	0.4	61	1.4	0	0.0	1	0.0	0	0.0	0	0.0	0	0.0
	B	76	1.8	26	0.6	109	2.6	0	0.0	6	0.1	0	0.0	1	0.0	0	0.0
	not cl.	1	0.0	0	0.0	3	0.1	0	0.0	0	0.0	0	0.0	0	0.0	0	0.0
	total	145	3.4	41	1.0	173	4.1	0	0.0	7	0.2	0	0.0	1	0.0	0	0.0
III	A	86	2.0	16	0.4	320	7.5	0	0.0	12	0.3	0	0.0	1	0.0	0	0.0
	B	3	0.1	5	0.1	6	0.1	0	0.0	1	0.0	0	0.0	0	0.0	0	0.0
	C	40	0.9	34	0.8	271	6.4	0	0.0	46	1.1	0	0.0	0	0.0	0	0.0
	not cl.	2	0.1	1	0.0	3	0.1	0	0.0	2	0.1	0	0.0	0	0.0	0	0.0
	total	131	3.1	56	1.3	600	14.1	0	0.0	61	1.4	0	0.0	1	0.0	0	0.0
IV	A	1	0.0	2	0.1	10	0.2	0	0.0	3	0.1	0	0.0	0	0.0	0	0.0
	B	20	0.5	4	0.1	156	3.7	1	0.0	26	0.6	0	0.0	0	0.0	0	0.0
	not cl.	1	0.0	0	0.0	3	0.1	0	0.0	1	0.0	0	0.0	0	0.0	0	0.0
	total	22	0.5	6	0.1	169	4.0	1	0.0	30	0.7	0	0.0	0	0.0	0	0.0
Total		2251	52.8	179	4.2	1555	36.5	2	0.1	112	2.6	0	0.0	3	0.1	0	0.0

Treatment FIGO Stage		Radiation								Chem.Immun. Hormon				Others				Total			
		Alone		Chem.Immun. Hormon		Other		Chem.Immun. Hormon, Other		Alone		Other		Alone		Other					
		No.	%	No.	%	No.	%	No.	%	No.	%	No.	%	No.	%	No.	%	No.	%		
I	A	7	0.2	1	0.0	0	0.0	0	0.0	32	0.8	2	0.1	2	0.1	0	0.0	0	0.0	777	18.2
	B	3	0.1	1	0.0	0	0.0	0	0.0	5	0.1	0	0.0	1	0.0	0	0.0	0	0.0	1422	33.3
	C	4	0.1	0	0.0	0	0.0	0	0.0	3	0.1	0	0.0	1	0.0	0	0.0	0	0.0	512	12.0
	not cl.	1	0.0	0	0.0	0	0.0	0	0.0	0	0.0	0	0.0	0	0.0	0	0.0	0	0.0	10	0.2
	total	15	0.4	2	0.1	0	0.0	0	0.0	40	0.9	2	0.1	4	0.1	0	0.0	0	0.0	2721	63.8
II	A	2	0.1	0	0.0	0	0.0	0	0.0	0	0.0	0	0.0	0	0.0	0	0.0	0	0.0	147	3.5
	B	2	0.1	0	0.0	0	0.0	0	0.0	0	0.0	0	0.0	0	0.0	0	0.0	0	0.0	220	5.2
	not cl.	4	0.1	2	0.1	0	0.0	0	0.0	1	0.0	0	0.0	0	0.0	0	0.0	0	0.0	11	0.3
	total	8	0.2	2	0.1	0	0.0	0	0.0	1	0.0	0	0.0	0	0.0	0	0.0	0	0.0	378	8.9
III	A	0	0.0	1	0.0	0	0.0	0	0.0	0	0.0	0	0.0	0	0.0	0	0.0	0	0.0	436	10.2
	B	0	0.0	1	0.0	0	0.0	0	0.0	1	0.0	0	0.0	0	0.0	0	0.0	0	0.0	17	0.4
	C	1	0.0	2	0.1	0	0.0	0	0.0	9	0.2	0	0.0	0	0.0	0	0.0	0	0.0	403	9.5
	not cl.	2	0.1	1	0.0	1	0.0	0	0.0	3	0.1	0	0.0	0	0.0	0	0.0	0	0.0	15	0.4
	total	3	0.1	5	0.1	1	0.0	0	0.0	13	0.3	0	0.0	0	0.0	0	0.0	0	0.0	871	20.4
IV	A	2	0.1	1	0.0	0	0.0	0	0.0	0	0.0	0	0.0	0	0.0	0	0.0	0	0.0	19	0.5
	B	12	0.3	14	0.3	0	0.0	0	0.0	33	0.8	1	0.0	1	0.0	0	0.0	0	0.0	268	6.3
	not cl.	0	0.0	0	0.0	0	0.0	0	0.0	3	0.1	0	0.0	1	0.0	0	0.0	0	0.0	9	0.2
	total	14	0.3	15	0.4	0	0.0	0	0.0	36	0.8	1	0.0	2	0.1	0	0.0	0	0.0	296	6.9
Total		40	0.9	24	0.6	1	0.0	0	0.0	90	2.1	3	0.1	6	0.1	0	0.0	0	0.0	4266	

**Table 3. 5-Year Results, Treatment Started in 2004**

5-year result	No. of patients	%
Alive with no Evidence of the Disease	1947	77.9
Alive with Carcinoma	85	3.4
Alive with or without Carcinoma Unknown	18	0.7
Died of Carcinoma	294	11.8
Died of Other Malignant Tumor	19	0.8
Died of Intercurrent Disease	17	0.7
Cause of Death Unknown	2	0.1
Lost to follow-up	116	4.6
Total	2498	

**Table 4. 5-Year Survival by Stage, Treatment Started in 2004**

FIGO Stage		Patients treated		5-year survival		Lost to follow-up
		No.		%		
I	A	419	1596	97.6	95.5	74/1596 (4.6%)
	B	863		96.3		
	C	311		90.7		
	not cl.	3		-		
II	A	89	220	94.2	92.6	10/220 (4.6%)
	B	131		91.5		
	not cl.	0		-		
III	A	261	499	81.4	74.6	27/499 (5.4%)
	B	7		71.4		
	C	228		67.5		
	not cl.	3		-		
IV	A	10	183	45.0	31.5	5/183 (2.7%)
	B	167		31.3		
	not cl.	6		-		
Total		2498		86.5		

**Table 5. 5-Year Survival by Stage and Histological Type, Treatment Started in 2004**

FIGO Stage	Histology	Patients treated		5-year survival
		No.	%	%
I	Endometrioid type	1386	86.8	96.5
	Serous, Mucinous, Clear cell type	63	4.0	93.1
	Others	147	9.2	87.2
	No description	0	0.0	-
II	Endometrioid type	181	82.3	95.0
	Serous, Mucinous, Clear cell type	13	5.9	69.2
	Others	26	11.8	88.5
	No description	0	0.0	-
III	Endometrioid type	349	69.9	82.6
	Serous, Mucinous, Clear cell type	46	9.2	43.2
	Others	104	20.8	61.6
	No description	0	0.0	-
IV	Endometrioid type	100	54.6	35.4
	Serous, Mucinous, Clear cell type	34	18.6	14.1
	Others	49	26.8	34.7
	No description	0	0.0	-

**Table 6. 5-Year Survival by Stage and Grade, Treatment Started in 2004**

FIGO Stage	Grade	Patients treated		5-year survival
		No.	%	%
I	Grade 1	961	60.2	97.1
	Grade 2	378	23.7	96.5
	Grade 3	146	9.2	90.2
	Not Graded	111	7.0	84.6
II	Grade 1	111	50.5	98.1
	Grade 2	72	32.7	91.6
	Grade 3	20	9.1	84.2
	Not Graded	17	7.7	70.6
III	Grade 1	166	33.3	90.7
	Grade 2	156	31.3	76.5
	Grade 3	98	19.6	65.4
	Not Graded	79	15.8	48.9
IV	Grade 1	31	16.9	45.2
	Grade 2	39	21.3	30.8
	Grade 3	59	32.2	29.2
	Not Graded	54	29.5	26.5

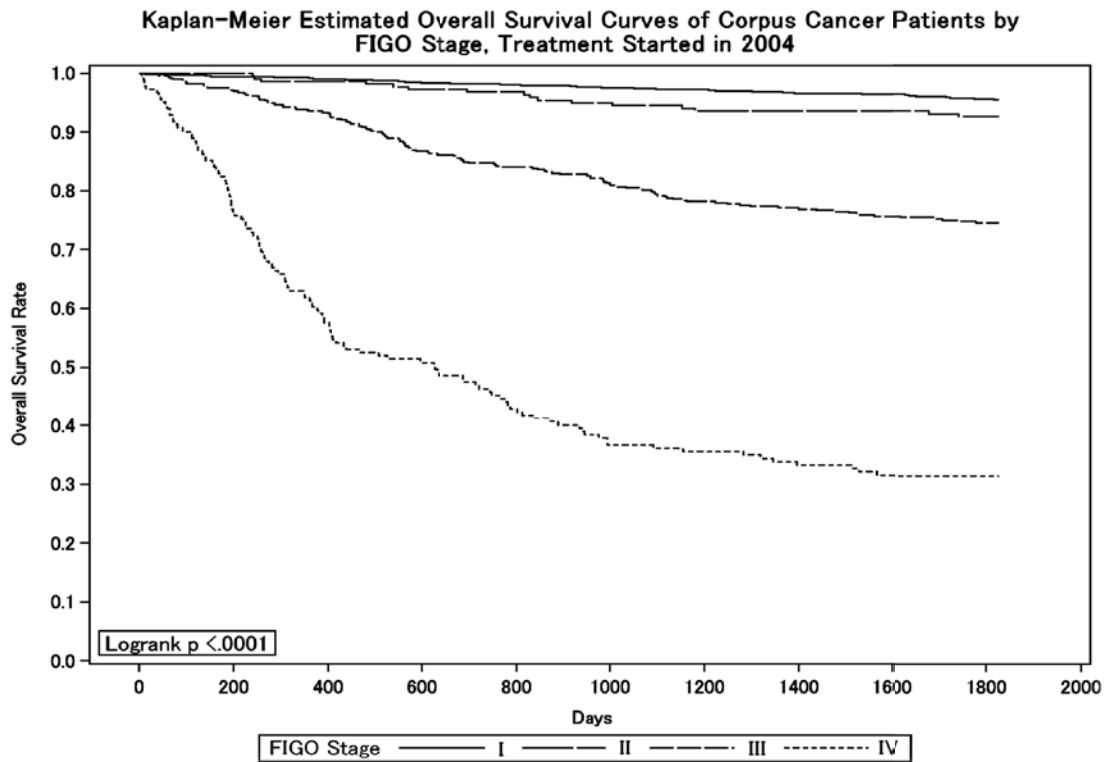
**Table 7. 5-Year Survival by Histological Type and Grade, Treatment Started in 2004**

Histology	Grade	Patients treated		5-year survival
		No.	%	%
Endometrioid type	Grade 1	1164	57.7	95.4
	Grade 2	568	28.2	88.5
	Grade 3	236	11.7	78.3
	Not Graded	48	2.4	72.4
Serous, Mucinous, Clear cell type	Grade 1	19	12.2	66.9
	Grade 2	22	14.1	53.1
	Grade 3	36	23.1	50.6
	Not Graded	79	50.6	62.5
Others	Grade 1	86	26.4	96.4
	Grade 2	55	16.9	86.8
	Grade 3	51	15.6	53.1
	Not Graded	134	41.1	55.3

**Table 8. 5-Year Survival by TNM Classification, Treatment Started in 2004**

TNM Stage			Patients treated		5-year survival
			No.	%	%
T1a	N0	M0	419	16.9	97.6
T1b	N0	M0	899	36.3	96.1
T1c	N0	M0	315	12.7	90.5
T2a	N0	M0	89	3.6	93.1
T2b	N0	M0	132	5.3	91.6
T3a	N0	M0	192	7.8	80.0
T3b	N0	M0	5	0.2	80.0
T3c	N0	M0	11	0.4	45.5
T4	N0	M0	7	0.3	14.3
T1a	N1	M0	5	0.2	100.0
T1b	N1	M0	27	1.1	87.5
T1c	N1	M0	52	2.1	76.9
T2a	N1	M0	2	0.1	100.0
T2b	N1	M0	26	1.1	72.2
T3a	N1	M0	45	1.8	52.1
T3b	N1	M0	9	0.4	26.7
T3c	N1	M0	68	2.8	64.7
T4	N1	M0	11	0.4	51.1
Any T	AnyN	M1	161	6.5	32.0

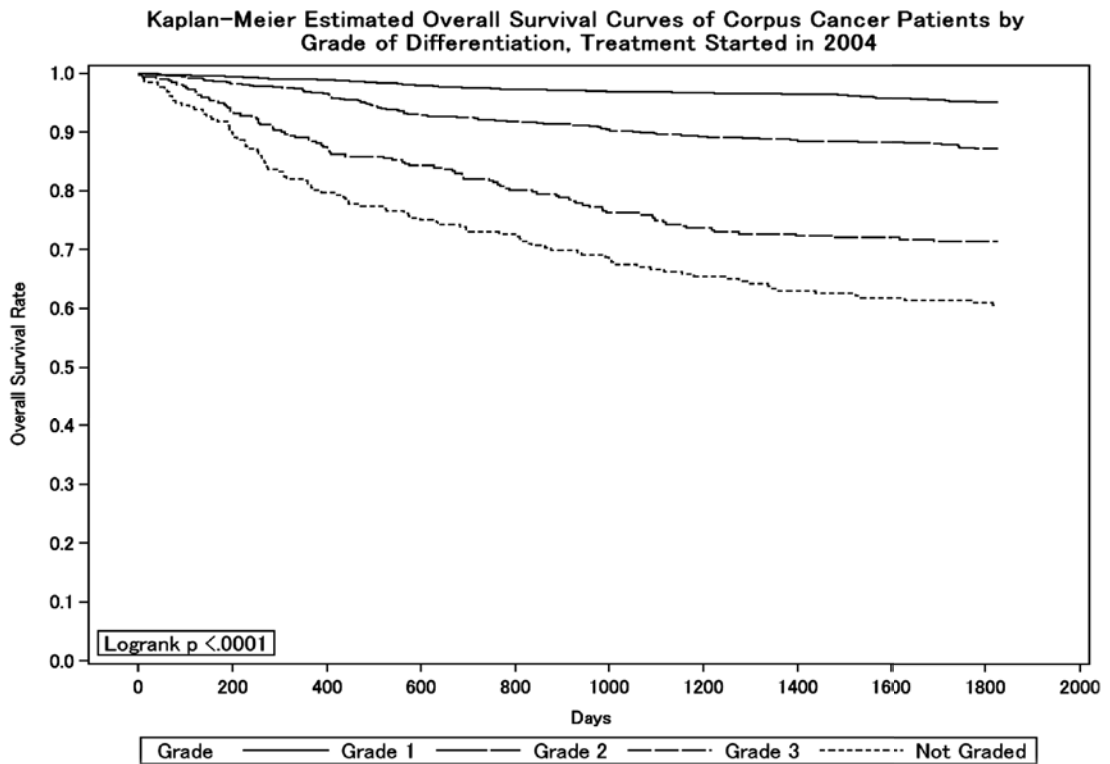
Figure 1.



Test of Equality over Strata			
Test	Chi-Square	DF	Pr > Chi-Square
Log-rank	996.1214	3	<.0001
Wilcoxon	1011.6804	3	<.0001
-2Log (LR)	547.4530	3	<.0001

Adjustment for Multiple Comparisons for the Log-rank Test				
Strata Comparison		Chi-Square	p-Values	
FIGO Stage	FIGO Stage		Raw	Tukey-Kramer
I	II	137.7000	<.0001	<.0001
I	III	224.1000	<.0001	<.0001
I	IV	656.4000	<.0001	<.0001
II	III	63.4595	<.0001	<.0001
II	IV	343.5000	<.0001	<.0001
III	IV	32.7498	<.0001	<.0001

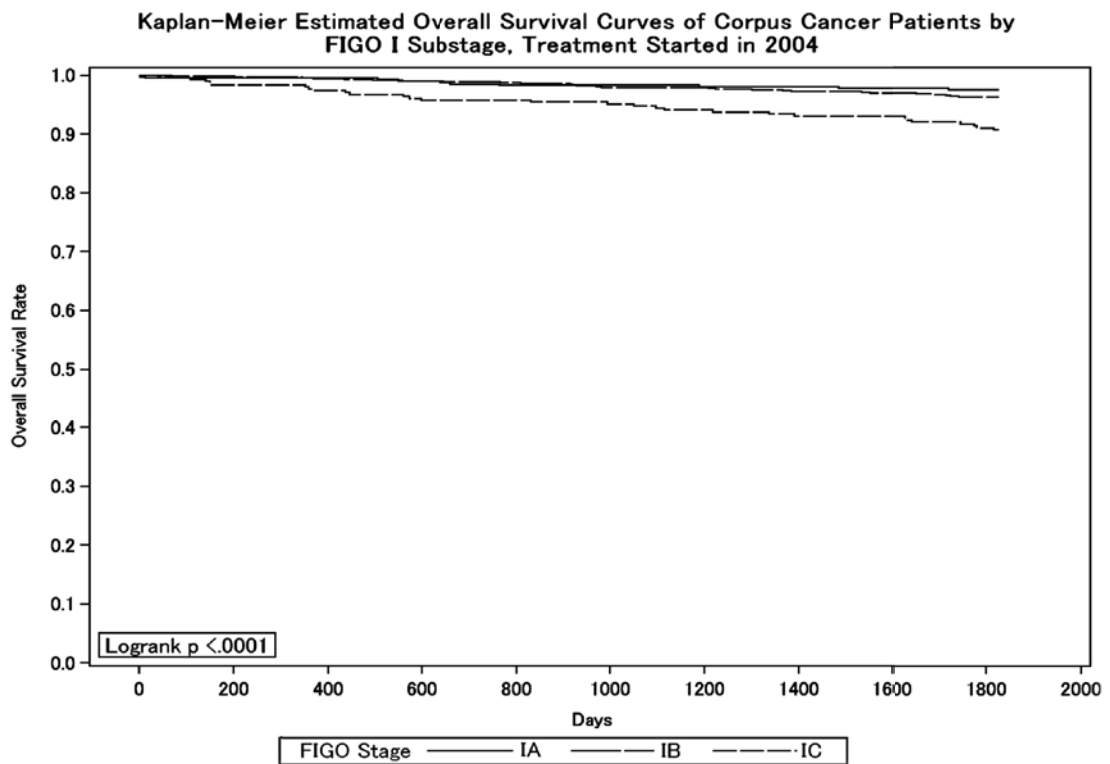
Figure 2.



Test of Equality over Strata			
Test	Chi-Square	DF	Pr > Chi-Square
Log-rank	325.9831	3	<.0001
Wilcoxon	330.8971	3	<.0001
-2Log (LR)	274.5196	3	<.0001

Adjustment for Multiple Comparisons for the Log-rank Test				
Strata Comparison		Chi-Square	p-Values	
Grade	Grade		Raw	Tukey-Kramer
Grade 1	Grade 2	52.1343	<.0001	<.0001
Grade 1	Grade 3	180.0000	<.0001	<.0001
Grade 1	Not Graded	256.6000	<.0001	<.0001
Grade 2	Grade 3	27.4080	<.0001	<.0001
Grade 2	Not Graded	56.6748	<.0001	<.0001
Grade 3	Not Graded	6.0811	0.0137	0.0653

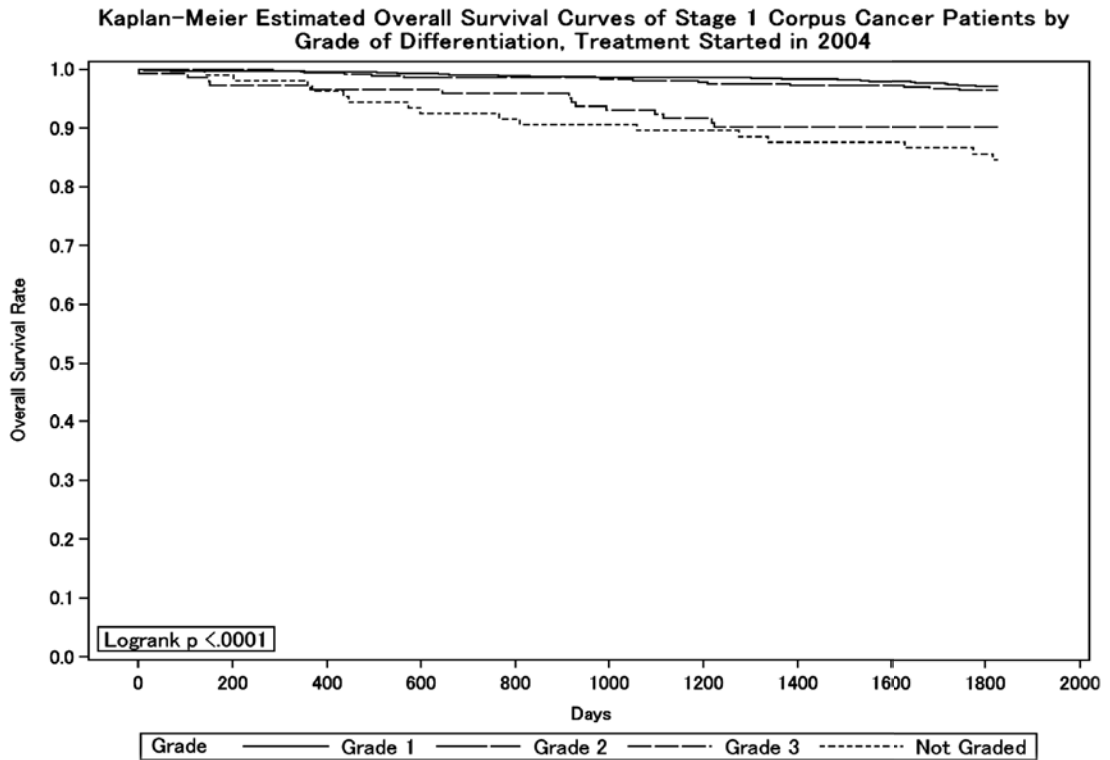
Figure 3.



Test of Equality over Strata			
Test	Chi-Square	DF	Pr > Chi-Square
Log-rank	22.2693	2	<.0001
Wilcoxon	22.2029	2	<.0001
-2Log (LR)	18.7536	2	<.0001

Adjustment for Multiple Comparisons for the Log-rank Test				
Strata Comparison		Chi-Square	p-Values	
FIGO Stage	FIGO Stage		Raw	Tukey-Kramer
IA	IB	0.0552	0.8143	0.9700
IA	IC	17.6051	<.0001	<.0001
IB	IC	11.2121	0.0008	0.0023

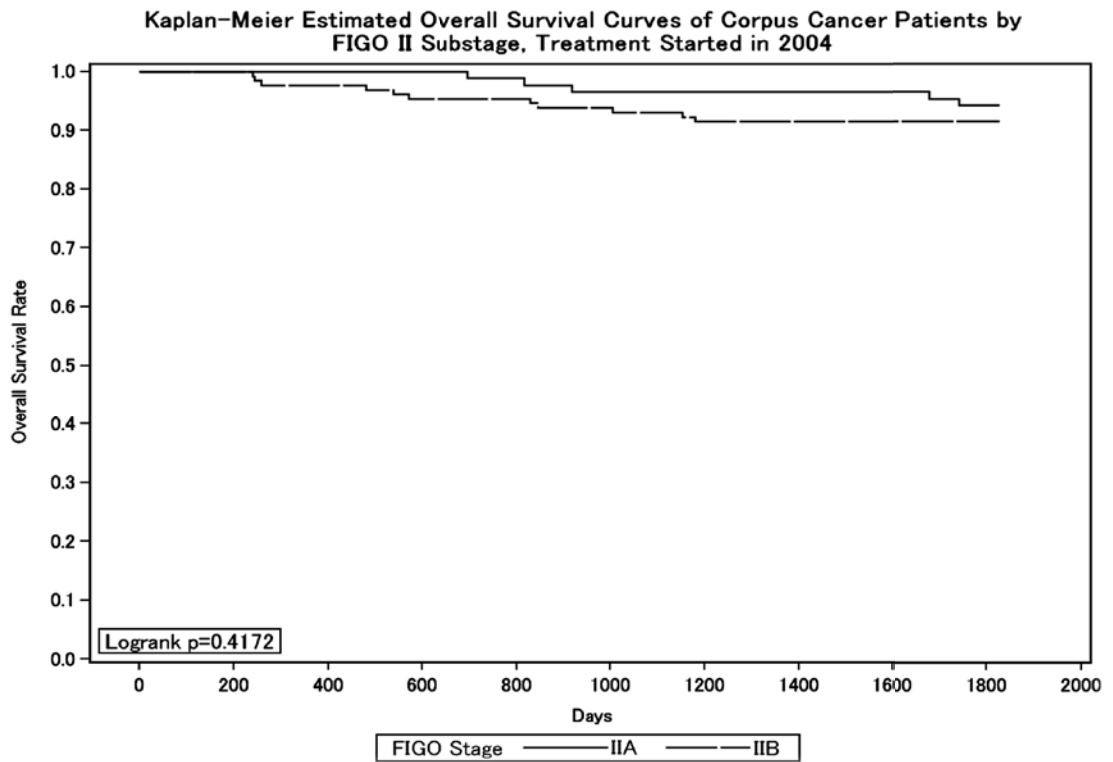
Figure 4.



Test of Equality over Strata			
Test	Chi-Square	DF	Pr > Chi-Square
Log-rank	47.4648	3	<.0001
Wilcoxon	48.1940	3	<.0001
-2Log (LR)	33.1385	3	<.0001

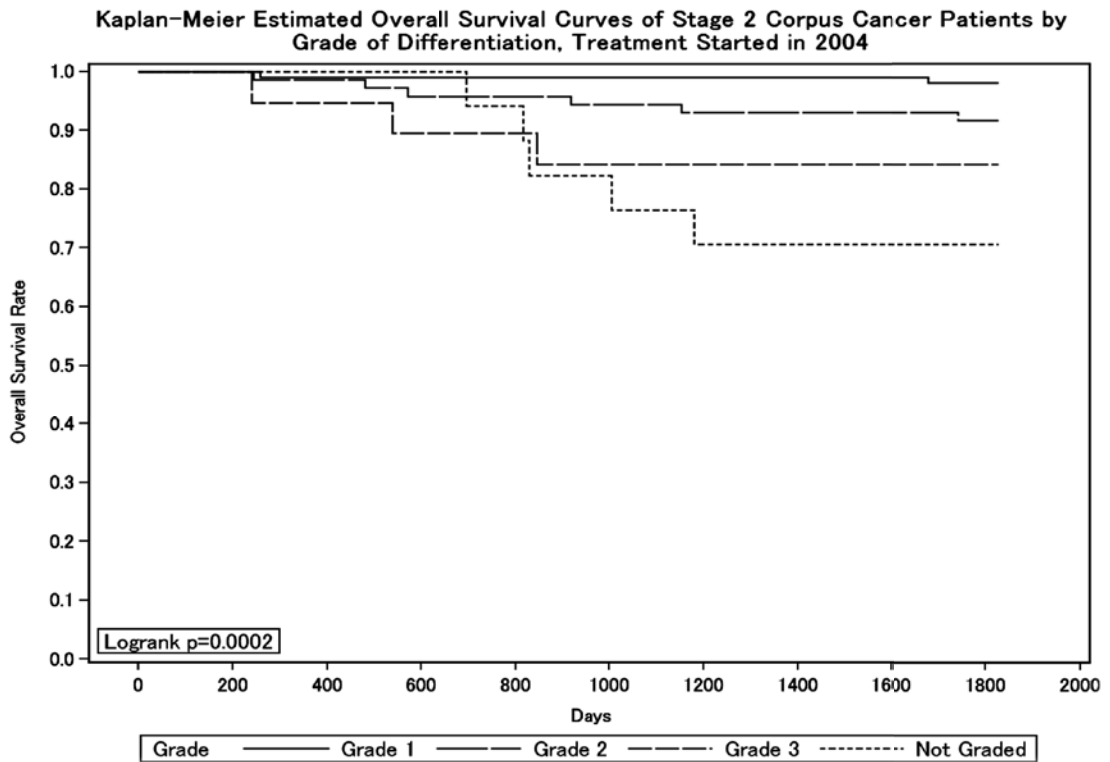
Adjustment for Multiple Comparisons for the Log-rank Test				
Strata Comparison		Chi-Square	p-Values	
Grade	Grade		Raw	Tukey-Kramer
Grade 1	Grade 2	2.8787	0.0898	0.3254
Grade 1	Grade 3	18.6539	<.0001	<.0001
Grade 1	Not Graded	28.6456	<.0001	<.0001
Grade 2	Grade 3	6.3073	0.0120	0.0581
Grade 2	Not Graded	12.4655	0.0004	0.0023
Grade 3	Not Graded	1.3587	0.2438	0.6486

Figure 5.



Test of Equality over Strata			
Test	Chi-Square	DF	Pr > Chi-Square
Log-rank	0.6581	1	0.4172
Wilcoxon	0.7587	1	0.3837
-2Log (LR)	0.6768	1	0.4107

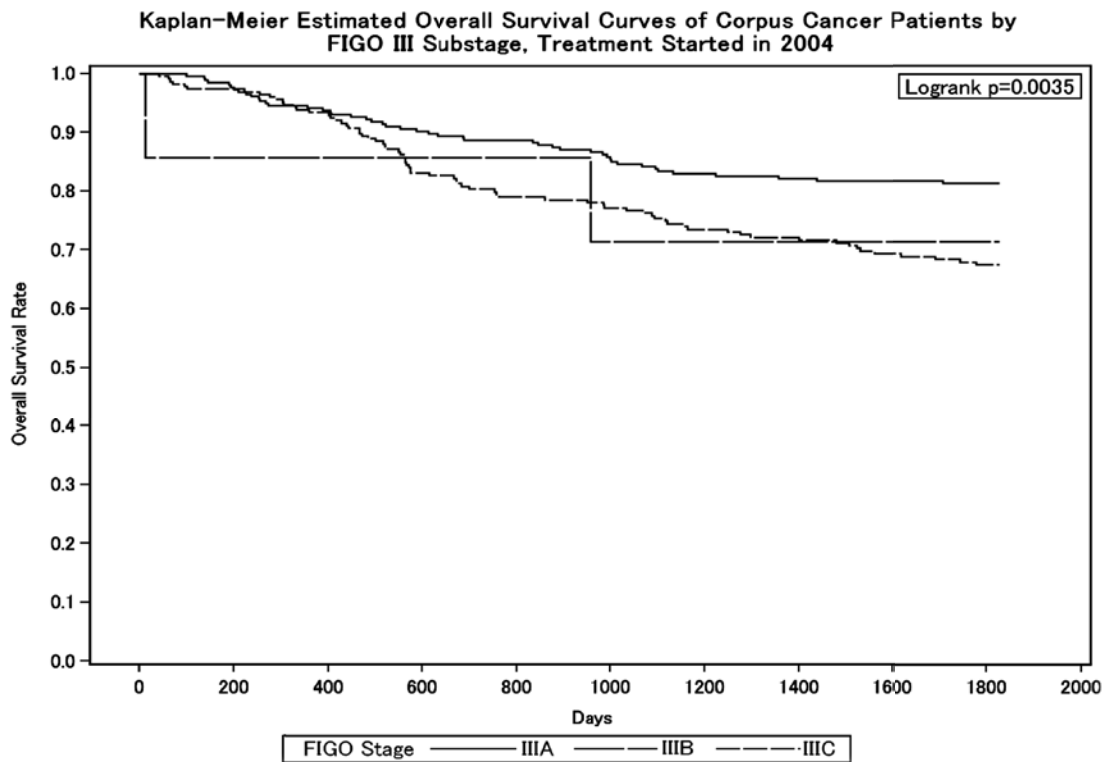
Figure 6.



Test of Equality over Strata			
Test	Chi-Square	DF	Pr > Chi-Square
Log-rank	20.0201	3	0.0002
Wilcoxon	19.9518	3	0.0002
-2Log (LR)	15.8684	3	0.0012

Adjustment for Multiple Comparisons for the Log-rank Test				
Strata Comparison		Chi-Square	p-Values	
Grade	Grade		Raw	Tukey-Kramer
Grade 1	Grade 2	3.8070	0.0510	0.2068
Grade 1	Grade 3	9.7956	0.0017	0.0095
Grade 1	Not Graded	16.4535	<.0001	0.0003
Grade 2	Grade 3	0.1676	0.6823	0.9768
Grade 2	Not Graded	1.8088	0.1787	0.5342
Grade 3	Not Graded	1.8836	0.1699	0.5167

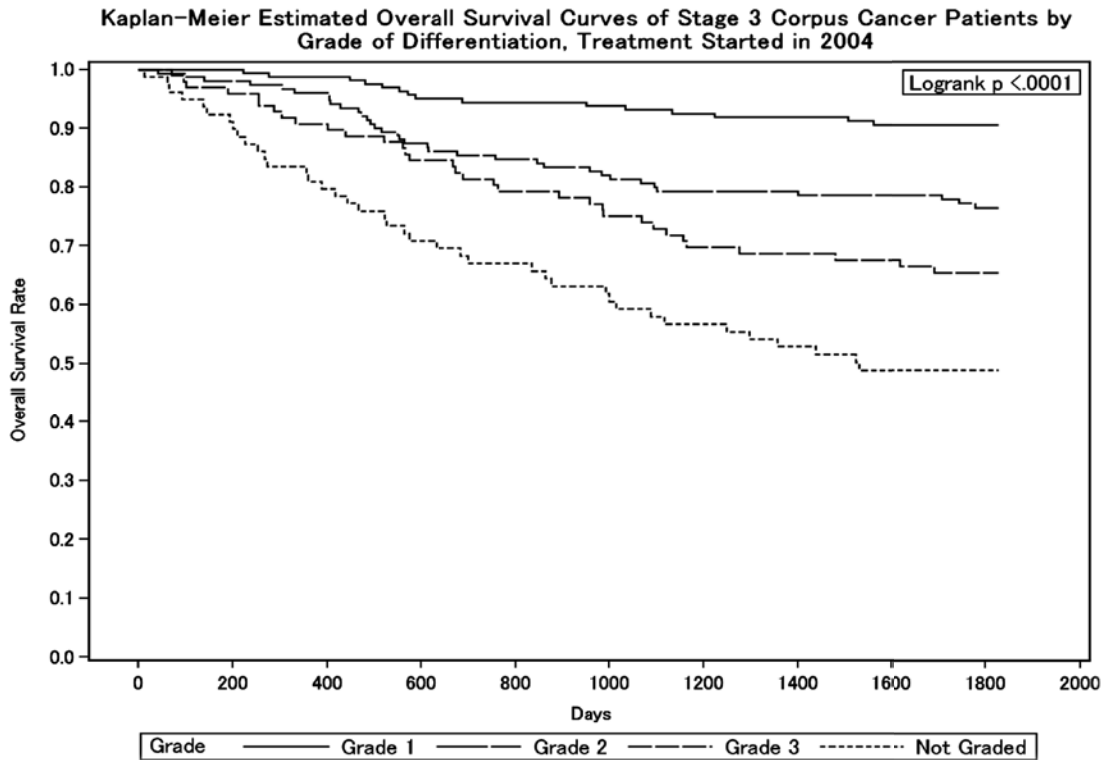
Figure 7.



Test of Equality over Strata			
Test	Chi-Square	DF	Pr > Chi-Square
Log-rank	11.3171	2	0.0035
Wilcoxon	10.3348	2	0.0057
-2Log (LR)	12.0750	2	0.0024

Adjustment for Multiple Comparisons for the Log-rank Test				
Strata Comparison		Chi-Square	p-Values	
FIGO Stage	FIGO Stage		Raw	Tukey-Kramer
IIIA	IIIB	10.5471	0.0012	0.0033
IIIA	IIIC	11.2577	0.0008	0.0023
IIIB	IIIC	9.5069	0.0020	0.0058

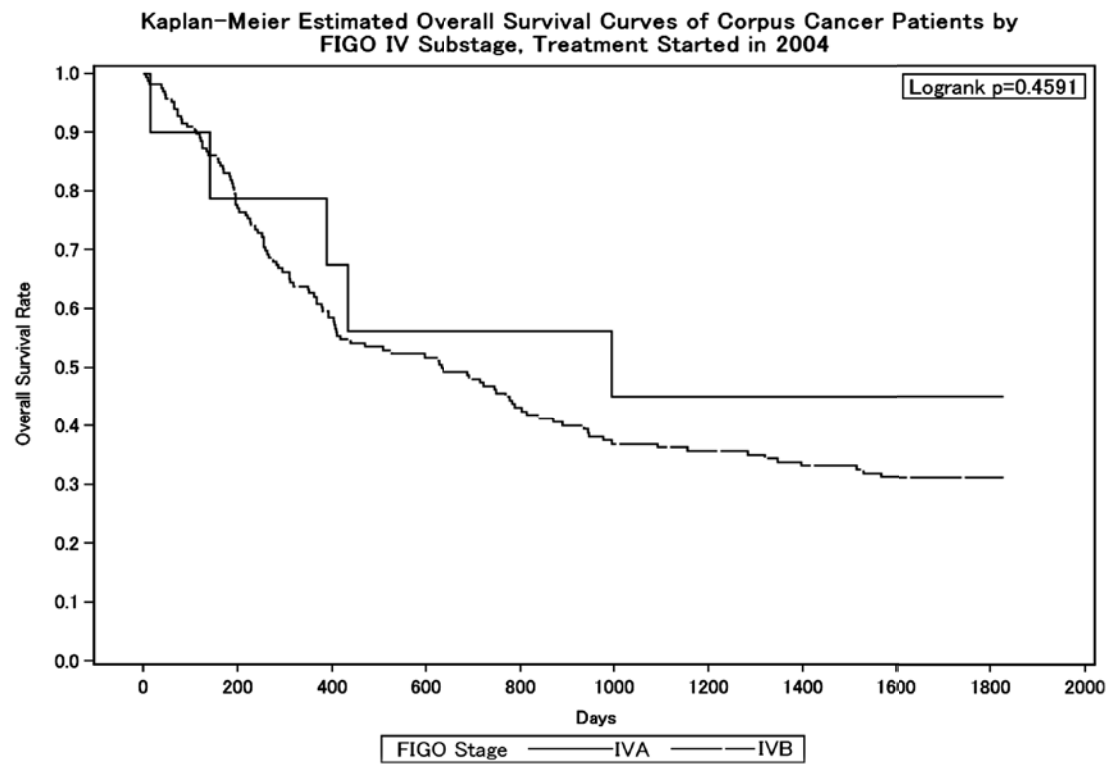
Figure 8.



Test of Equality over Strata			
Test	Chi-Square	DF	Pr > Chi-Square
Log-rank	59.5000	3	<.0001
Wilcoxon	59.8315	3	<.0001
-2Log (LR)	58.8432	3	<.0001

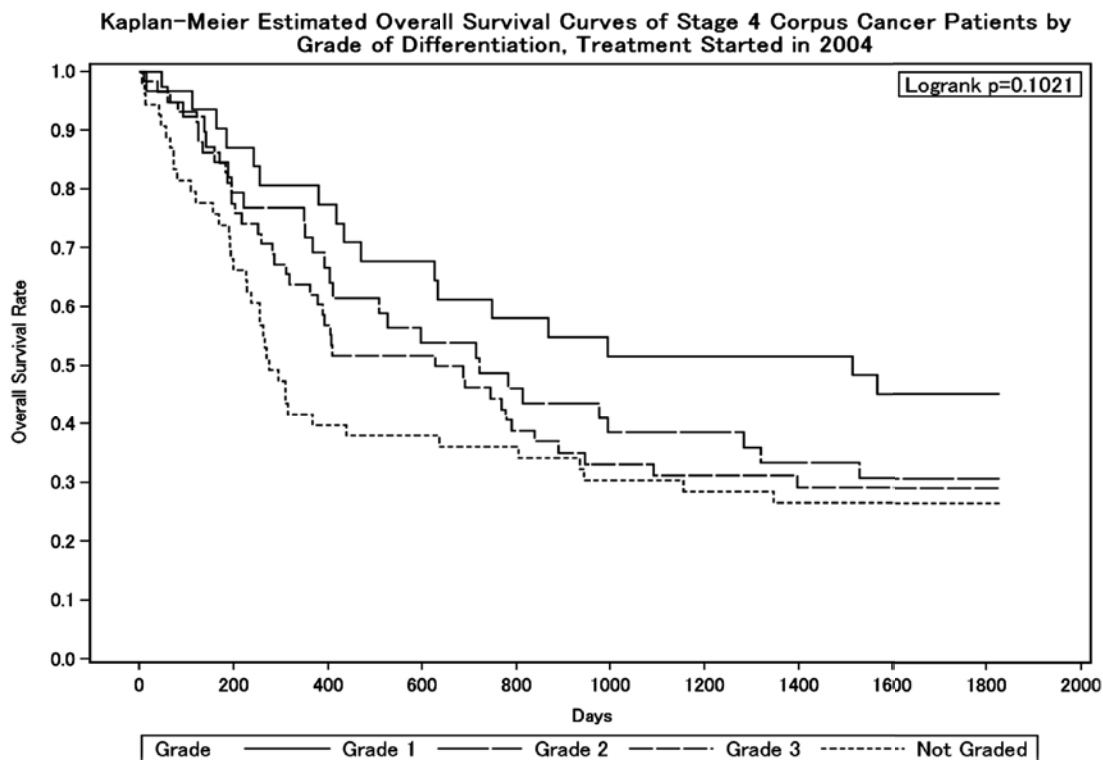
Adjustment for Multiple Comparisons for the Log-rank Test				
Strata Comparison		Chi-Square	p-Values	
Grade	Grade		Raw	Tukey-Kramer
Grade 1	Grade 2	8.6251	0.0033	0.0175
Grade 1	Grade 3	24.7460	<.0001	<.0001
Grade 1	Not Graded	53.3994	<.0001	<.0001
Grade 2	Grade 3	2.8921	0.0890	0.3233
Grade 2	Not Graded	14.5666	0.0001	0.0008
Grade 3	Not Graded	5.0204	0.0251	0.1124

Figure 9.



Test of Equality over Strata			
Test	Chi-Square	DF	Pr > Chi-Square
Log-rank	0.5480	1	0.4591
Wilcoxon	0.3665	1	0.5449
-2Log (LR)	0.8385	1	0.3598

Figure 10.



Test of Equality over Strata			
Test	Chi-Square	DF	Pr > Chi-Square
Log-rank	6.2037	3	0.1021
Wilcoxon	9.3300	3	0.0252
-2Log (LR)	7.9977	3	0.0461

Adjustment for Multiple Comparisons for the Log-rank Test				
Strata Comparison		Chi-Square	p-Values	
Grade	Grade		Raw	Tukey-Kramer
Grade 1	Grade 2	0.9436	0.3314	0.7658
Grade 1	Grade 3	1.8217	0.1771	0.5312
Grade 1	Not Graded	6.0004	0.0143	0.0681
Grade 2	Grade 3	0.1860	0.6663	0.9731
Grade 2	Not Graded	2.0886	0.1484	0.4710
Grade 3	Not Graded	0.8428	0.3586	0.7952

卵巢悪性腫瘍治療成績

Statement for the Year 2004, Inclusive, Malignant Ovarian Tumor

Table A. 5-Year Results, Stage I-IV

A	B	C	D	E	F	G	H	I	J	K
Institution	Total No. Treated	no description	Alive with no Evidence of the Disease	Alive with Carcinoma	Alive with or without Carcinoma Unknown	Died of Carcinoma	Died of Other Malignant Tumor	Died of Intercurrent Disease	Cause of Death Unknown	Lost to follow-up
010003	HOKKAIDO CANCER CENTER	37	2	16	1	0	18	0	0	0
010025	SAPPORO MED. UNIV.	16	0	8	0	0	4	0	0	4
010027	HOKKAIDO UNIV.	12	0	6	1	0	3	0	0	2
010028	KKR SAPPORO MED. CENTER	8	0	7	0	0	1	0	0	0
010037	ASAHIKAWA CITY HOSP.	12	12	0	0	0	0	0	0	0
010040	ASAHIKAWA MED. COLL.	14	0	6	1	1	6	0	0	0
010045	KUSHIRO ROSAI HOSP.	6	6	0	0	0	0	0	0	0
010051	MURORAN CITY GENERAL HOSP.	1	1	0	0	0	0	0	0	0
020008	MUTSU GENERAL HOSP.	2	0	1	0	0	1	0	0	0
020012	HIROSAKI UNIV.	7	0	3	0	0	3	0	0	1
020017	MISAWA CITY HOSP.	2	0	0	1	0	0	1	0	0
040004	TOHOKU UNIV.	21	0	7	5	0	4	0	1	4
040013	SENDAI MED. CENTER	20	0	11	0	0	6	1	0	2
050001	AKITA RED CROSS HOSP.	3	0	2	0	0	1	0	0	0
050003	AKITA UNIV.	16	0	8	1	1	2	0	1	3
060002	YAMAGATA PREF. CENTRAL HOSP.	10	3	4	1	0	2	0	0	0
060005	YAMAGATA UNIV.	26	0	12	1	0	10	0	1	2
070003	FUKUSHIMA MED. UNIV.	20	1	11	0	2	3	0	0	3
080001	TSUCHIURA KYODO GENERAL HOSP.	9	0	5	0	0	3	1	0	0
080003	KASUMIGAURA MED. CENTER	6	6	0	0	0	0	0	0	0
080006	TSUKUBA GAKUEN HOSP.	1	0	1	0	0	0	0	0	0
080007	TSUKUBA UNIV.	35	0	19	2	1	10	1	1	1
080017	MITO MED. CENTER	11	11	0	0	0	0	0	0	0
080021	HITACHI GENERAL HOSP.	19	15	0	0	0	4	0	0	0
080031	TSUKUBA MED. CENTER	4	0	1	0	0	3	0	0	0
090004	DOKKYO MED. UNIV.	25	0	11	1	0	11	0	0	2
090005	SAISEIKAI UTSUNOMIYA HOSP.	16	0	8	0	0	7	0	0	1
090011	ASHIKAGA RED CROSS HOSP.	15	0	8	1	0	6	0	0	0
090015	JICHI MED. UNIV.	48	0	17	1	2	19	0	0	9
090016	TOCHIGI CANCER CENTER	12	0	6	0	0	5	0	0	1
100012	GUNMA UNIV.	11	0	6	1	0	3	0	0	1
100022	GUNMA PREF. CANCER CENTER	29	0	8	3	2	7	0	0	9
110008	SAITAMA SHAKAI HOKEN HOSP.	11	0	8	0	0	3	0	0	0
110014	KOSHIGAYA MUNI. HOSP.	19	0	8	2	1	5	0	0	3
110022	SAITAMA MED. CENTER	52	52	0	0	0	0	0	0	0
110023	SAITAMA NATIONAL HOSP.	9	0	4	2	0	3	0	0	0
110027	NATIONAL DEFENSE MED. COLL.	29	29	0	0	0	0	0	0	0
110030	SAITAMA CANCER CENTER	19	0	9	1	2	7	0	0	0
120005	CHIBA UNIV.	14	9	0	0	0	5	0	0	0
120009	NIPPON MED. SCH. CHIBA HOKUSOU HOSP.	21	13	0	0	0	8	0	0	0
120012	MATSUDO CITY HOSP.	20	0	7	2	0	6	0	0	5
120021	JIKEI UNIV. KASHIWA HOSP.	44	0	22	8	2	8	0	0	4
120023	JUNTENDO UNIV. URAYASU HOSP.	17	1	9	1	0	6	0	0	0
120029	ASAHI CENTRAL HOSP.	21	0	10	2	1	7	1	0	0
120035	KAMEDA MED. CENTER	16	0	6	1	0	7	0	1	1
120042	CHIBA CANCER CENTER	10	0	3	0	2	5	0	0	0
130005	MITUI MEMORIAL HOSP.	18	0	6	1	1	6	0	0	4
130009	NATIONAL CANCER CENTER	30	0	13	5	0	8	2	0	2
130013	JIKEI UNIV.	16	0	8	1	0	2	0	0	5
130023	JUNTENDO UNIV.	21	0	12	2	0	7	0	0	0
130024	TOKYO MED. DENT. UNIV.	10	10	0	0	0	0	0	0	0
130025	NIPPON MED. SCH.	20	20	0	0	0	0	0	0	0
130026	TOKYO UNIV.	20	0	12	3	1	4	0	0	0
130029	TOKYO WOMENS MED. UNIV. MED. CENTER EAST	14	0	9	1	0	3	0	0	1

	A	B	C	D	E	F	G	H	I	J	K
	Institution	Total No. Treated	no description	Alive with no Evidence of the Disease	Alive with Carcinoma	Alive with or without Carcinoma Unknown	Died of Carcinoma	Died of Other Malignant Tumor	Died of Intercurrent Disease	Cause of Death Unknown	Lost to follow-up
○	130034	JIKEI UNIV. KATSUSHIKA MED. CENTER	25	25	0	0	0	0	0	0	0
○	130044	NTT MED. CENTER TOKYO	25	0	10	2	3	10	0	0	0
○	130046	SHOWA UNIV.	21	0	7	0	0	9	0	0	5
○	130050	TOHO UNIV. OMORI HOSP.	11	0	6	1	1	0	0	0	3
○	130055	RED CROSS MED. CENTER	11	0	7	0	0	4	0	0	0
○	130074	TOKYO MED. UNIV.	16	16	0	0	0	0	0	0	0
○	130077	KEIO UNIV.	45	0	22	3	0	12	0	0	8
○	130080	NATIONAL CENTER FOR GLOBAL HEALTH AND MED.	15	15	0	0	0	0	0	0	0
○	130081	TOKYO WOMENS MED. UNIV.	21	21	0	0	0	0	0	0	0
○	130085	KOSEI HOSP.	1	0	0	0	0	1	0	0	0
○	130092	TEIKYO UNIV.	14	0	9	0	0	3	0	0	2
○	130095	NIHON UNIV.	16	0	8	0	0	4	0	0	4
○	130099	MUSASHINO RED CROSS HOSP.	19	16	0	0	0	3	0	0	0
○	130100	KYORIN UNIV.	6	0	3	0	0	0	0	0	3
○	130106	NATIONAL DESASTER MED. CENTER	7	7	0	0	0	0	0	0	0
○	130112	MACHIDA MUNI. HOSP.	6	0	2	1	0	1	0	0	2
○	130116	JIKEI UNIV. 3RD HOSP.	12	0	5	3	1	3	0	0	0
○	130119	NIPPON MED. SCH. TAMA NAGAYAMA HOSP.	4	0	3	0	0	1	0	0	0
○	130122	TOKYO METRO. KOMAGOME HOSP.	19	0	8	1	0	7	0	0	3
○	130124	KYOUNDO HOSP.	9	0	3	0	1	1	0	0	4
○	130125	CANCER INST. HOSP.	55	3	31	0	0	20	0	0	1
○	130135	TAMA-NAMBU CHIIKI HOSP.	12	8	0	0	0	3	0	1	0
○	140001	KAWASAKI MUNI. HOSP.	11	11	0	0	0	0	0	0	0
○	140006	NIPPON MED. SCH. MUSASHI KOSUGI HOSP.	8	0	5	0	0	1	0	0	2
○	140008	KANTO ROSAI HOSP.	8	0	3	2	0	2	0	0	1
○	140012	ST. MARIANNA UNIV.	36	36	0	0	0	0	0	0	0
○	140017	SHOWA UNIV. FUJIGAOKA HOSP.	19	0	9	3	1	4	0	0	2
○	140020	KITAZATO UNIV.	34	0	14	1	0	14	0	0	5
○	140029	YOKOHAMA CITY UNIV.	29	1	11	3	0	11	1	1	0
○	140030	YOKOHAMA MINAMI KYOSAI HOSP.	16	0	6	0	1	6	0	0	3
○	140035	YOKOHAMA MUNI. HOSP.	8	0	5	0	0	2	0	0	1
○	140037	ST. MARIANNA UNIV. YOKOHAMA CITY SEIBU HOSP.	8	8	0	0	0	0	0	0	0
○	140038	YAMATO MUNI. HOSP.	6	6	0	0	0	0	0	0	0
○	140039	ATSUGI CITY HOSP.	10	10	0	0	0	0	0	0	0
○	140043	YOKOHAMA SAKAE KYOSAI HOSP.	3	3	0	0	0	0	0	0	0
○	140049	HIRATSUKA CITY HOSP.	9	9	0	0	0	0	0	0	0
○	140054	ISEHARA KYODO HO S P.	6	0	3	0	0	3	0	0	0
○	140055	TOKAI UNIV.	24	0	15	1	0	5	0	0	3
○	140059	KANAGAWA CANCER CENTER	17	0	12	0	0	5	0	0	0
○	140061	YOKOHAMA CITY UNIV. MED. CENTER	5	0	1	1	0	2	0	0	1
○	150002	YAMANASHI PREF. CENTRAL HOSP.	12	12	0	0	0	0	0	0	0
○	150006	UNIV. OF YAMANASHI	11	0	7	1	0	2	0	0	1
○	160006	SHINSHU UNIV.	11	0	6	1	0	3	0	0	1
○	160014	MATSUMOTO MED. CENTER MATSUMOTO HOSP.	4	4	0	0	0	0	0	0	0
○	160022	NAGANO MUNI. HOSP.	6	6	0	0	0	0	0	0	0
○	170006	FUJI CITY GENERAL HOSP.	4	0	2	0	0	2	0	0	0
○	180001	NAGAOKA RED CROSS HOSP.	8	0	2	2	0	4	0	0	0
○	180009	NIIGATA UNIV.	38	38	0	0	0	0	0	0	0
○	180010	NIIGATA CANCER CENTER HOSP.	26	0	13	0	1	11	0	1	0
○	190001	TOYAMA UNIV.	5	0	1	0	0	2	0	0	2
○	190002	TOYAMA RED CROSS HOSP.	6	0	3	1	0	0	0	0	2
○	190003	TOYAMA PREF. CENTRAL HOSP.	9	9	0	0	0	0	0	0	0
○	200001	KANAZAWA MED. UNIV.	6	0	1	1	0	3	0	0	1
○	200002	KANAZAWA MED. CENTER	6	0	2	1	0	2	0	0	1
○	200004	KANAZAWA UNIV.	15	2	5	1	0	4	0	0	3
○	210003	FUKUI UNIV.	7	5	0	0	0	2	0	0	0
○	210004	FUKUI RED CROSS HOSP.	10	0	4	0	4	2	0	0	0
○	220002	GIFU UNIV.	7	0	3	0	0	4	0	0	0
○	230001	TOYOHASHI MUNI. HOSP.	15	11	0	0	0	4	0	0	0
○	230014	RED CROSS NAGOYA DAICHI HOSP.	16	0	2	0	0	9	0	0	5

	A	B	C	D	E	F	G	H	I	J	K
	Institution	Total No. Treated	no description	Alive with no Evidence of the Disease	Alive with Carcinoma	Alive with or without Carcinoma Unknown	Died of Carcinoma	Died of Other Malignant Tumor	Died of Intercurrent Disease	Cause of Death Unknown	Lost to follow-up
	230022 MIDORI MUNI. HOSP.	4	4	0	0	0	0	0	0	0	0
	230024 NAGOYA MED. CENTER	10	10	0	0	0	0	0	0	0	0
○	230031 NAGOYA UNIV.	20	0	15	0	0	5	0	0	0	0
○	230034 NAGOYA CITY UNIV.	9	0	8	1	0	0	0	0	0	0
○	230035 FUJITA HEALTH UMIN.	19	0	15	0	0	4	0	0	0	0
	230040 AICHI MED. UNIV.	19	11	0	0	0	4	0	0	0	4
○	230052 AICHI CANCER CENTER	34	0	15	4	2	13	0	0	0	0
○	240002 MIE PREF. GENERAL MED. CENTER	7	0	0	2	0	4	0	0	0	1
○	240003 YOKKAICHI MUNI. HOSP.	4	0	2	1	0	1	0	0	0	0
○	240009 MIE UNIV.	15	0	9	0	0	4	0	0	0	2
○	240015 ISE RED CROSS HOSP.	10	0	7	2	0	1	0	0	0	0
	250001 OHTSU RED CROSS HOSP.	8	0	3	0	0	3	0	0	0	2
○	260002 KYOTO 2ND RED CROSS HOSP.	14	0	9	0	0	4	0	0	0	1
	260003 KYOTO PREF. UNIV. OF MED.	13	0	2	1	0	4	0	1	0	5
	260006 KYOTO CITY HOSP.	3	3	0	0	0	0	0	0	0	0
	260007 KYOTO 1ST RED CROSS HOSP.	12	0	4	0	0	5	0	0	0	3
○	260009 KYOTO UNIV.	22	0	10	2	1	6	0	1	0	2
○	260013 KYOTO KATSURA HOSP.	6	0	3	0	0	3	0	0	0	0
○	260017 SAISEIKAI KYOTO HOSP.	9	0	4	1	0	4	0	0	0	0
○	270003 KITANO HOSP.	10	0	7	0	0	2	0	0	0	1
○	270007 ŌSAKA CITY GENERAL HOSP.	22	0	15	0	1	5	0	0	0	1
	270013 ŌSAKA POLICE HOSP.	7	0	4	0	0	0	0	0	0	3
	270016 ŌSAKA CITY UNIV.	41	0	14	2	4	7	1	2	0	11
	270035 ŌSAKA UNIV.	18	18	0	0	0	0	0	0	0	0
○	270041 ŌSAKA MED. COLL.	31	0	15	0	0	12	1	0	0	3
	270042 KANSAI MED. UNIV.	13	0	1	0	0	0	0	0	0	12
	270056 KINKI UNIV.	35	35	0	0	0	0	0	0	0	0
	270062 ŌSAKA ROUSAI HOSP.	10	0	5	0	1	0	0	0	0	4
○	270101 ŌSAKA MED. CENTER FOR CANCER AND CVD	27	0	6	2	1	16	0	0	0	2
	280001 KOBE UNIV.	7	0	4	0	0	0	0	0	0	3
○	280002 KOBE CITY MED. CENTER GENERAL HOSP.	22	0	7	2	0	8	0	0	2	3
○	280010 KOBE MED. CENTER	5	0	3	0	0	1	0	0	0	1
○	280015 KANSAI ROSAI HOSP.	14	0	6	0	1	7	0	0	0	0
	280021 HYOGO MED. COLL.	14	14	0	0	0	0	0	0	0	0
	280028 TOYOOKA PUBLIC HOSP.	3	0	0	0	0	2	0	0	0	1
	280030 HIMEJI RED CROSS HOSP.	12	12	0	0	0	0	0	0	0	0
	280031 HIMEJI MED. CENTER	7	3	0	0	0	3	0	0	0	1
○	280033 HYOGO CANCER CENTER	26	0	9	5	0	11	0	0	0	1
○	290003 NARA PREF. NARA HOSP.	14	0	8	2	0	4	0	0	0	0
○	290004 TENRI HOSP.	12	0	5	1	0	5	0	0	0	1
	290007 NARA MED. UNIV.	9	0	0	0	0	0	0	0	0	9
	290009 MIMURO HOSP.	1	1	0	0	0	0	0	0	0	0
○	300002 JAPAN RED CROSS WAKAYAMA MED. CENTER	11	0	6	1	0	2	0	0	0	2
○	300003 WAKAYAMA MED. UNIV.	10	0	3	1	1	4	0	0	0	1
○	310001 TOTTORI PREF. CENTRAL HOSP.	6	0	1	4	0	1	0	0	0	0
○	310007 TOTTORI UNIV.	10	0	6	2	0	2	0	0	0	0
○	320003 SHIMANE UNIV.	9	0	2	1	2	3	1	0	0	0
	330002 OKAYAMA RED CROSS HOSP.	6	0	2	0	0	1	0	1	0	2
○	330003 KAWASAKI HOSP.	1	0	0	0	0	1	0	0	0	0
○	330004 OKAYAMA SAISEIKAI GENERAL HOSP.	10	0	2	2	0	5	0	0	0	1
○	330006 OKAYAMA UNIV.	18	0	7	2	0	7	0	0	0	2
○	330008 KURASHIKI CENTRAL HOSP.	16	0	10	2	0	2	1	0	1	0
	330009 KAWASAKI MED. SCH.	5	5	0	0	0	0	0	0	0	0
	330010 KURASHIKI MED. CENTER	6	6	0	0	0	0	0	0	0	0
○	340001 FUKUYAMA MED. CENTER	11	0	6	2	0	3	0	0	0	0
	340002 ONOMICHI GENERAL HOSP.	11	11	0	0	0	0	0	0	0	0
○	340007 HIROSHIMA CITY HOSP.	16	0	10	0	0	4	0	0	0	2
	340008 HIROSHIMA RED CROSS HOSP.	4	2	2	0	0	0	0	0	0	0
○	340010 HIROSHIMA CITY ASA HOSP.	12	0	6	2	1	3	0	0	0	0
○	340012 HIROSHIMA UNIV.	7	0	3	0	0	3	0	0	0	1

A		B	C	D	E	F	G	H	I	J	K
Institution		Total No. Treated	no description	Alive with no Evidence of the Disease	Alive with Carcinoma	Alive with or without Carcinoma Unknown	Died of Carcinoma	Died of Other Malignant Tumor	Died of Intercurrent Disease	Cause of Death Unknown	Lost to follow-up
○ 340014	HIROSHIMA PREF. HOSP.	8	1	4	0	0	3	0	0	0	0
○ 340015	KURE MED. CENTER	15	0	8	1	0	4	0	1	0	1
○ 340017	KURE KYOSAI HOSP.	7	7	0	0	0	0	0	0	0	0
○ 340018	HIROSHIMA GENERAL HOSP.	7	0	4	0	0	2	0	0	0	1
340031	HIGASHIHIROSHIMA MED. CENTER	3	3	0	0	0	0	0	0	0	0
350003	TOKUYAMA CENTRAL HOSP.	14	14	0	0	0	0	0	0	0	0
○ 350008	YAMAGUCHI RED CROSS HOSP.	4	0	2	0	0	2	0	0	0	0
○ 350009	YAMAGUCHI UNIV.	8	0	3	0	1	3	0	0	0	1
○ 360003	TOKUSHIMA UNIV.	6	0	4	0	0	1	0	0	0	1
360005	TOKUSHIMA PREF. CENTRAL HOSP.	7	0	2	0	0	1	0	0	0	4
○ 370001	TAKAMATSU RED CROSS HOSP.	8	0	3	0	1	4	0	0	0	0
370003	KAGAWA PREF. CENTRAL HOSP.	14	14	0	0	0	0	0	0	0	0
○ 380001	SHIKOKU CANCER CENTER	17	0	8	1	2	5	1	0	0	0
380002	EHIME PREF. CENTRAL HOSP.	3	3	0	0	0	0	0	0	0	0
380005	MATSUYAMA RED CROSS HOSP.	6	0	3	0	0	1	0	0	0	2
○ 380006	EHIME UNIV.	13	1	6	2	0	3	0	0	0	1
○ 390003	KOCHI HEALTH SCIENCES CENTER	11	0	7	2	1	1	0	0	0	0
390006	KOCHI UNIV.	9	0	5	1	0	0	0	0	0	3
400007	KYUSHU KOSEINENKIN HOSP.	9	0	4	0	0	2	0	0	0	3
○ 400008	UNIV. OCCUPATIONAL & ENVIRONMENTAL HEALTH	8	0	5	0	0	3	0	0	0	0
○ 400010	KYUSHU MED. CENTER	14	0	8	1	0	3	0	0	0	2
○ 400012	KYUSHU UNIV.	31	0	21	3	1	2	0	1	0	3
○ 400013	FUKUOKA UNIV.	16	0	8	0	0	6	0	0	1	1
○ 400014	FUKUOKA RED CROSS HOSP.	10	0	3	0	0	7	0	0	0	0
○ 400020	KURUME UNIV.	24	0	11	1	1	11	0	0	0	0
○ 400040	KYUSHU CANCER CENTER	20	0	11	2	0	5	0	0	0	2
410002	SAGA PREF. HOSP. KOSEIKAN	6	6	0	0	0	0	0	0	0	0
○ 410005	SAGA UNIV.	9	0	2	4	1	1	0	0	0	1
○ 420001	NAGASAKI MUNI. HOSP.	6	0	3	0	0	1	1	0	0	1
○ 420002	NAGASAKI UNIV.	20	0	14	1	0	3	1	1	0	0
○ 420003	RED CROSS NAGASAKI ATOMIC BOMB HOSP.	5	0	3	0	0	1	0	0	0	1
○ 420006	SASEBO KYOSAI HOSP.	20	0	15	0	0	4	1	0	0	0
430001	KUMAMOTO MED. CENTER	14	0	5	0	0	0	0	0	1	8
○ 430002	KUMAMOTO UNIV.	27	0	13	2	1	8	1	0	0	2
○ 430003	KUMAMOTO CITY HOSP.	18	0	8	3	1	5	0	1	0	0
○ 440002	OITA PREF. HOSP.	13	0	7	1	0	4	0	0	0	1
○ 450001	MIYAZAKI PREF. HOSP.	27	0	10	0	1	11	0	0	0	5
○ 460001	KAGOSHIMA UNIV.	25	0	13	0	1	10	0	0	0	1
○ 460004	KAGOSHIMA CITY HOSP.	20	0	14	1	0	3	1	0	0	1
○ 470008	RYUKYU UNIV.	14	0	10	0	0	4	0	0	0	0
○ 470010	OKINAWA PREF. CHUBU HOSP.	9	0	5	0	1	2	0	0	0	1
Total		3066	657	1130	156	60	748	17	17	6	275

Table 1. No. of Patients by Stage and Age

Age		~19		20~29		30~39		40~49		50~59		60~69		70~79		80~		Total	
		No.	%	No.	%	No.	%	No.	%	No.	%	No.	%	No.	%	No.	%	No.	%
I	A	8	0.3	40	1.3	57	1.9	86	2.8	152	5.0	84	2.7	51	1.7	15	0.5	493	16.1
	B	0	0.0	0	0.0	5	0.2	5	0.2	11	0.4	8	0.3	0	0.0	0	0.0	29	1.0
	C(b)	4	0.1	20	0.7	41	1.3	84	2.7	133	4.3	53	1.7	22	0.7	8	0.3	365	11.9
	C(1)	0	0.0	2	0.1	3	0.1	8	0.3	14	0.5	7	0.2	2	0.1	1	0.0	37	1.2
	C(2)	2	0.1	11	0.4	9	0.3	36	1.2	56	1.8	28	0.9	11	0.4	2	0.1	155	5.1
	C(a)	3	0.1	7	0.2	13	0.4	50	1.6	58	1.9	27	0.9	11	0.4	2	0.1	171	5.6
	total	17	0.6	80	2.6	128	4.2	269	8.8	424	13.8	207	6.8	97	3.2	28	0.9	1250	40.8
II	A	0	0.0	0	0.0	5	0.2	9	0.3	14	0.5	3	0.1	2	0.1	0	0.0	33	1.1
	B	0	0.0	0	0.0	6	0.2	8	0.3	12	0.4	4	0.1	5	0.2	1	0.0	36	1.2
	C(b)	0	0.0	1	0.0	3	0.1	21	0.7	26	0.9	18	0.6	5	0.2	0	0.0	74	2.4
	C(1)	1	0.0	0	0.0	1	0.0	3	0.1	4	0.1	5	0.2	1	0.0	0	0.0	15	0.5
	C(2)	0	0.0	0	0.0	4	0.1	9	0.3	32	1.0	16	0.5	3	0.1	2	0.1	66	2.2
	C(a)	2	0.1	2	0.1	8	0.3	12	0.4	37	1.2	9	0.3	4	0.1	1	0.0	75	2.5
	total	3	0.1	3	0.1	27	0.9	62	2.0	125	4.1	55	1.8	20	0.7	4	0.1	299	9.8
III	A	0	0.0	3	0.1	3	0.1	4	0.1	16	0.5	6	0.2	1	0.0	2	0.1	35	1.1
	B	2	0.1	3	0.1	6	0.2	30	1.0	29	1.0	24	0.8	12	0.4	3	0.1	109	3.6
	C	3	0.1	20	0.7	45	1.5	135	4.4	263	8.6	252	8.2	165	5.4	23	0.8	906	29.6
	total	5	0.2	26	0.9	54	1.8	169	5.5	308	10.1	282	9.2	178	5.8	28	0.9	1050	34.3
IV	0	0.0	3	0.1	11	0.4	36	1.2	62	2.0	54	1.8	44	1.4	8	0.3	218	7.1	
Neoadjuvant Chemotherapy	1	0.0	1	0.0	5	0.2	33	1.1	88	2.9	65	2.1	37	1.2	3	0.1	233	7.6	
Unknown	0	0.0	2	0.1	0	0.0	3	0.1	8	0.3	0	0.0	2	0.1	1	0.0	16	0.5	
Total	26	0.9	115	3.8	225	7.3	572	18.7	1015	33.1	663	21.6	378	12.3	72	2.4	3066		

Table 2. 5-Year Results, Treatment Started in 2004

5-year result	No. of patients	%
Alive with no Evidence of the Disease	984	51.7
Alive with Carcinoma	140	7.4
Alive with or without Carcinoma Unknown	50	2.6
Died of Carcinoma	615	32.3
Died of Other Malignant Tumor	14	0.7
Died of Intercurrent Disease	9	0.5
Cause of Death Unknown	5	0.3
Lost to follow-up	86	4.5
Total	1903	

**Table 3. 5-Year Survival by Stage, Treatment Started in 2004**

FIGO Stage		Patients treated		5-year survival		Lost to follow-up
		No.		%		
I	A	317	774	94.1	90.2	41/774 (5.3%)
	B	18		94.1		
	C(b)	220		89.3		
	C(1)	21		85.7		
	C(2)	89		79.8		
	C(a)	109		89.6		
II	A	25	179	88.0	76.7	9/179 (5.0%)
	B	16		68.2		
	C(b)	50		79.6		
	C(1)	4		25.0		
	C(2)	39		70.6		
	C(a)	45		80.0		
III	A	23	653	53.1	47.7	25/653 (3.8%)
	B	63		59.2		
	C	567		46.3		
IV		149		27.9		8/149 (5.4%)
Neoadjuvant Chemotherapy		141		37.2		3/141 (2.1%)
Unknown		7		42.9		
Total		1903		65.4		

**Table 4. 5-Year Survival by Stage, Treatment Started in 2004  
Surface Epithelial-Stromal Tumors**

FIGO Stage		Patients treated		5-year survival	
		No.		%	
I	A	278	708	93.4	89.7
	B	17		93.8	
	C(b)	212		89.4	
	C(1)	19		84.2	
	C(2)	78		79.5	
	C(a)	104		89.1	
II	A	23	164	91.3	77.6
	B	14		70.7	
	C(b)	45		81.9	
	C(1)	4		25.0	
	C(2)	39		70.6	
	C(a)	39		79.5	
III	A	21	623	53.3	47.6
	B	59		58.7	
	C	543		46.1	
IV		146		27.0	
Neoadjuvant Chemotherapy		140		36.7	
Unknown		6		33.3	
Total		1787		64.5	

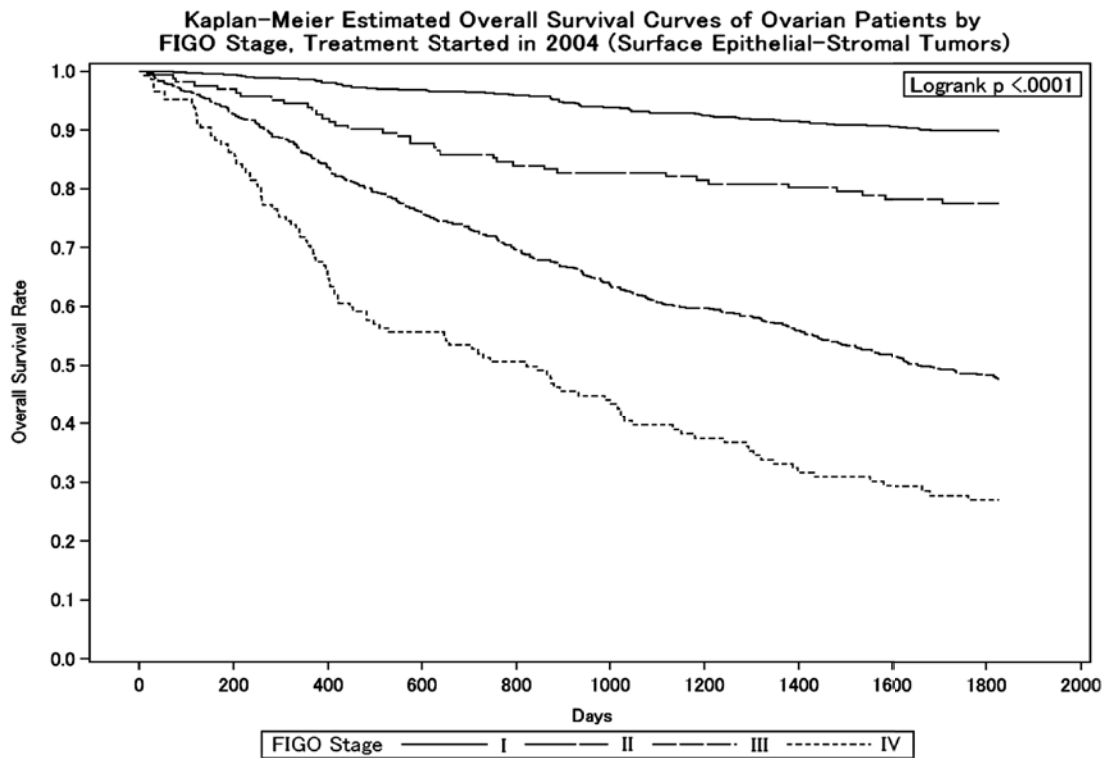
**Table 5. 5-Year Survival by Histology, Treatment Started in 2004**

Stage and Histological Type	FIGO Stage	Patients treated	5-year survival
		No.	%
Sex Cord/Stromal Tumors	I	4	75.0
	II	2	100.0
	III	0	0.0
	IV	0	0.0
	Neoadjuvant Chemotherapy	0	0.0
Germ Cell Tumors	I	58	96.5
	II	10	70.0
	III	24	53.3
	IV	3	66.7
	Neoadjuvant Chemotherapy	1	100.0
Immature Teratoma (G3)	I	8	100.0
	II	1	100.0
	III	3	100.0
	IV	0	0.0
	Neoadjuvant Chemotherapy	0	0.0
Dysgerminoma	I	14	100.0
	II	1	100.0
	III	4	50.0
	IV	1	100.0
	Neoadjuvant Chemotherapy	0	0.0
Yolk Sac Tumor	I	13	100.0
	II	2	50.0
	III	8	87.5
	IV	1	0.0
	Neoadjuvant Chemotherapy	1	100.0

**Table 6. 5-Year Survival by Stage and Histological Type, Treatment Started in 2004**

FIGO Stage	Histology	Patients treated		5-year survival
		No.	%	%
I	Serous	98	13.8	88.3
	Mucinous	167	23.6	91.4
	Endometrioid	153	21.6	94.1
	Clear	249	35.2	87.7
	Other	41	5.8	82.4
II	Serous	42	25.6	82.8
	Mucinous	10	6.1	56.3
	Endometrioid	56	34.2	83.7
	Clear	40	24.4	62.5
	Other	16	9.8	93.8
III	Serous	373	59.9	54.5
	Mucinous	37	5.9	18.9
	Endometrioid	67	10.8	54.3
	Clear	64	10.3	38.3
	Other	82	13.2	31.6
IV	Serous	65	44.5	24.3
	Mucinous	7	4.8	0.0
	Endometrioid	19	13.0	36.8
	Clear	23	15.8	23.1
	Other	32	21.9	35.5
Neoadjuvant Chemotherapy	Serous	99	70.7	37.8
	Mucinous	6	4.3	66.7
	Endometrioid	6	4.3	33.3
	Clear	8	5.7	12.5
	Other	21	15.0	38.1
Unknown	Serous	0	0.0	0.0
	Mucinous	0	0.0	0.0
	Endometrioid	0	0.0	0.0
	Clear	0	0.0	0.0
	Other	0	0.0	0.0

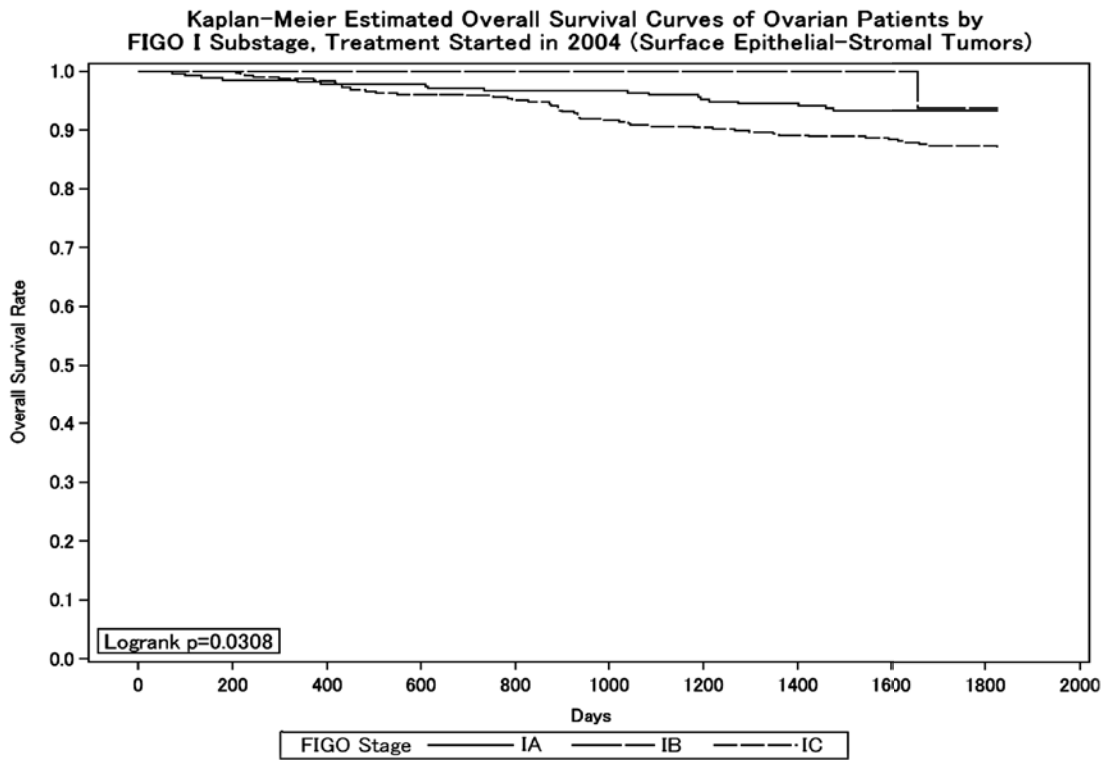
Figure 1.



Test of Equality over Strata			
Test	Chi-Square	DF	Pr > Chi-Square
Log-rank	434.0637	3	<.0001
Wilcoxon	424.4927	3	<.0001
-2Log (LR)	424.7090	3	<.0001

Adjustment for Multiple Comparisons for the Log-rank Test				
Strata Comparison		Chi-Square	p-Values	
FIGO Stage	FIGO Stage		Raw	Tukey-Kramer
I	II	127.8000	<.0001	<.0001
I	III	264.9000	<.0001	<.0001
I	IV	370.9000	<.0001	<.0001
II	III	127.5000	<.0001	<.0001
II	IV	98.7101	<.0001	<.0001
III	IV	29.0379	<.0001	<.0001

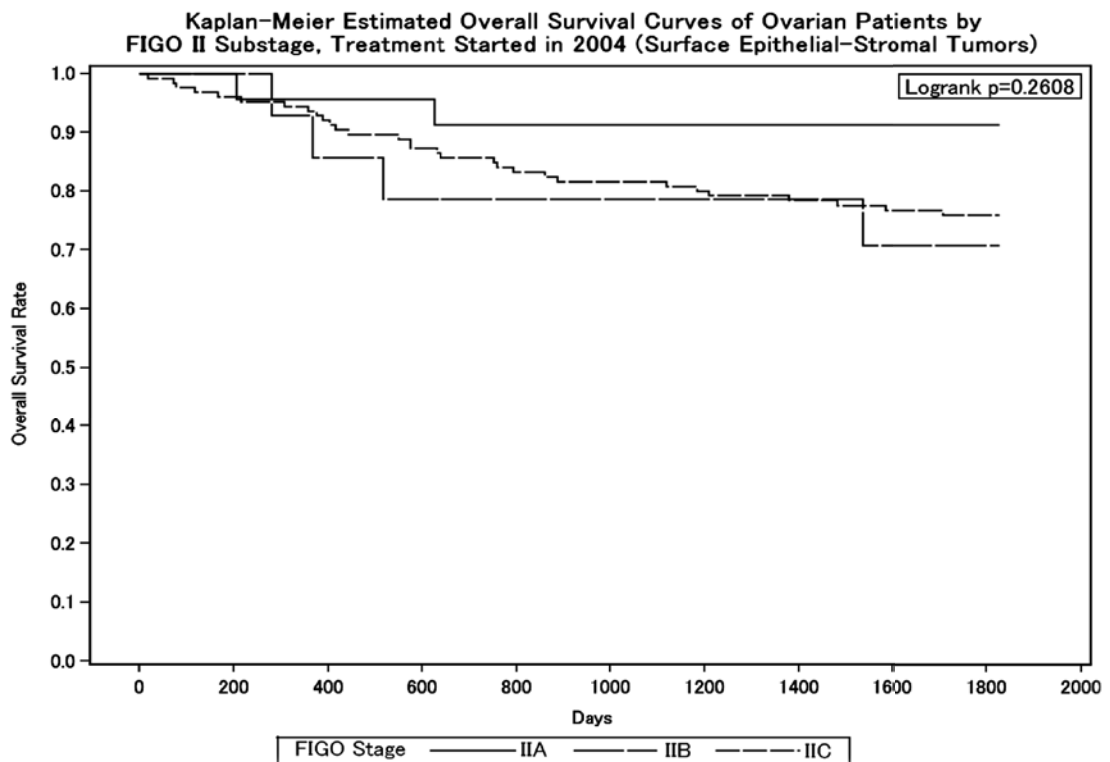
Figure 2.



Test of Equality over Strata			
Test	Chi-Square	DF	Pr > Chi-Square
Log-rank	6.9607	2	0.0308
Wilcoxon	6.8990	2	0.0318
-2Log (LR)	7.3130	2	0.0258

Adjustment for Multiple Comparisons for the Log-rank Test				
Strata Comparison		Chi-Square	p-Values	
FIGO Stage	FIGO Stage		Raw	Tukey-Kramer
IA	IB	4.4286	0.0353	0.0889
IA	IC	6.7036	0.0096	0.0260
IB	IC	6.5364	0.0106	0.0285

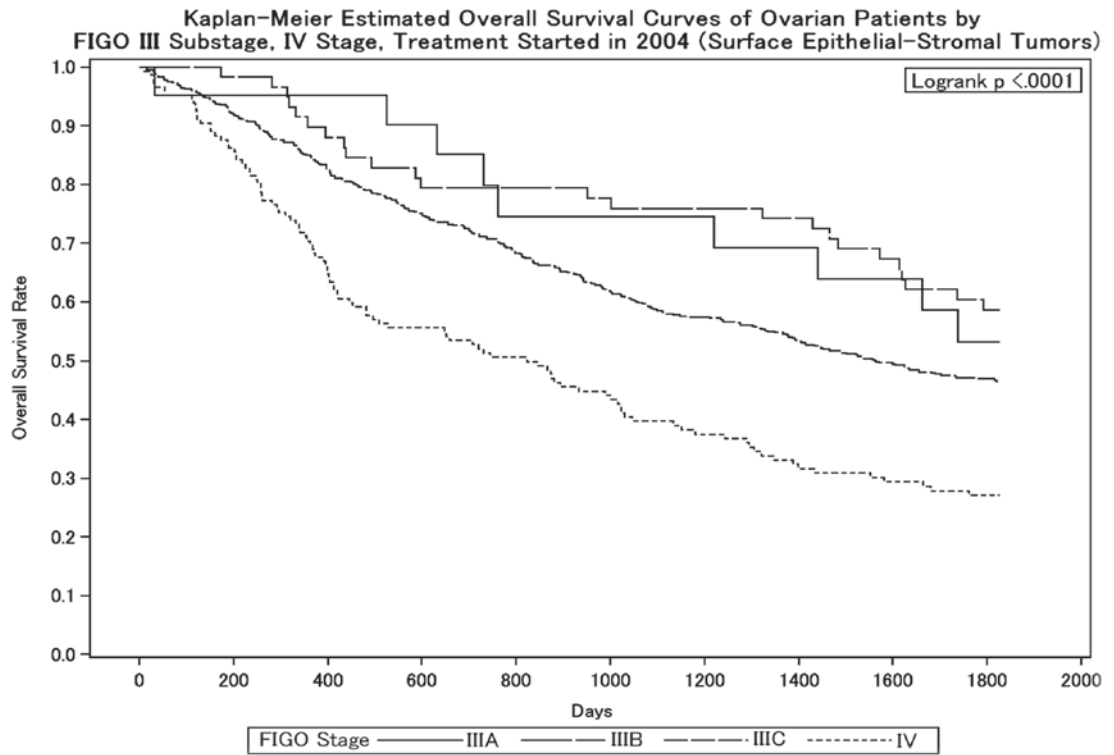
Figure 3.



Test of Equality over Strata			
Test	Chi-Square	DF	Pr > Chi-Square
Log-rank	2.6879	2	0.2608
Wilcoxon	2.5438	2	0.2803
-2Log (LR)	3.3758	2	0.1849

Adjustment for Multiple Comparisons for the Log-rank Test				
Strata Comparison		Chi-Square	p-Values	
FIGO Stage	FIGO Stage		Raw	Tukey-Kramer
IIA	IIB	2.4506	0.1175	0.2607
IIA	IIC	1.6150	0.2038	0.4117
IIB	IIC	0.0921	0.7615	0.9505

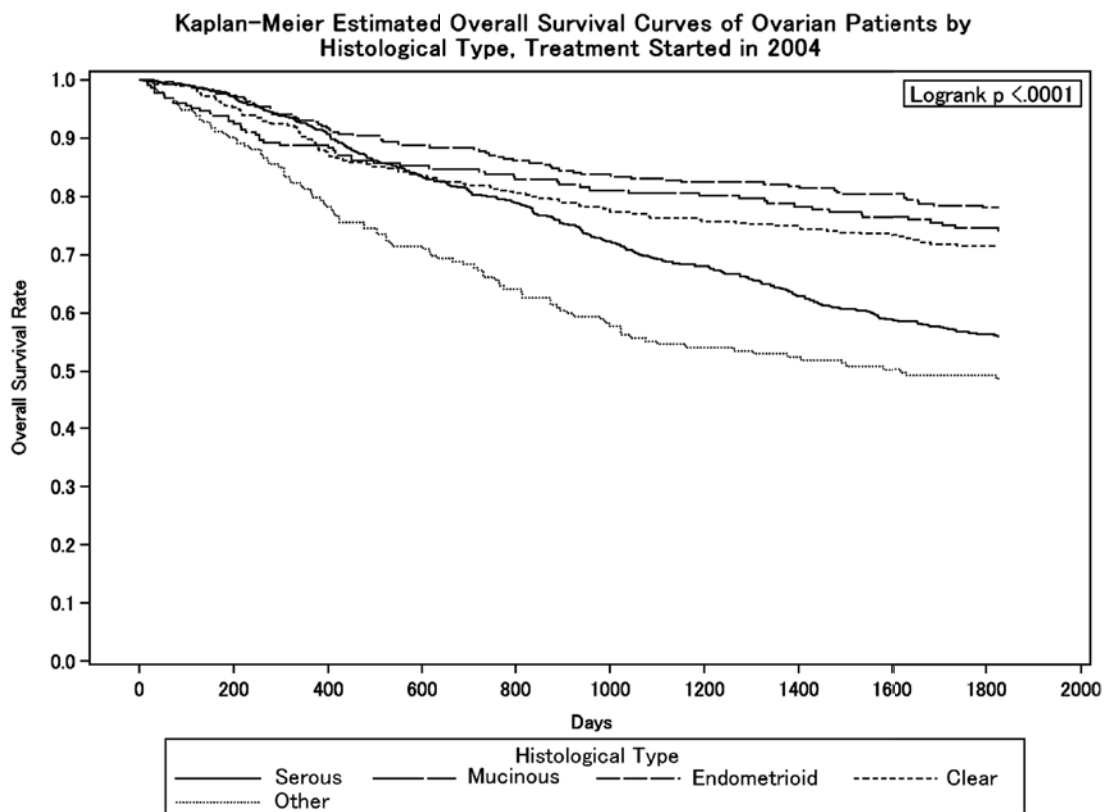
Figure 4.



Test of Equality over Strata			
Test	Chi-Square	DF	Pr > Chi-Square
Log-rank	35.8727	3	<.0001
Wilcoxon	39.6906	3	<.0001
-2Log (LR)	34.2683	3	<.0001

Adjustment for Multiple Comparisons for the Log-rank Test				
Strata Comparison		Chi-Square	p-Values	
FIGO Stage	FIGO Stage		Raw	Tukey-Kramer
IIIA	IIIB	2.4042	0.1210	0.4072
IIIA	IIIC	2.7081	0.0998	0.3530
IIIA	IV	29.3255	<.0001	<.0001
IIIB	IIIC	0.2500	0.6171	0.9591
IIIB	IV	31.6224	<.0001	<.0001
IIIC	IV	17.3686	<.0001	0.0002

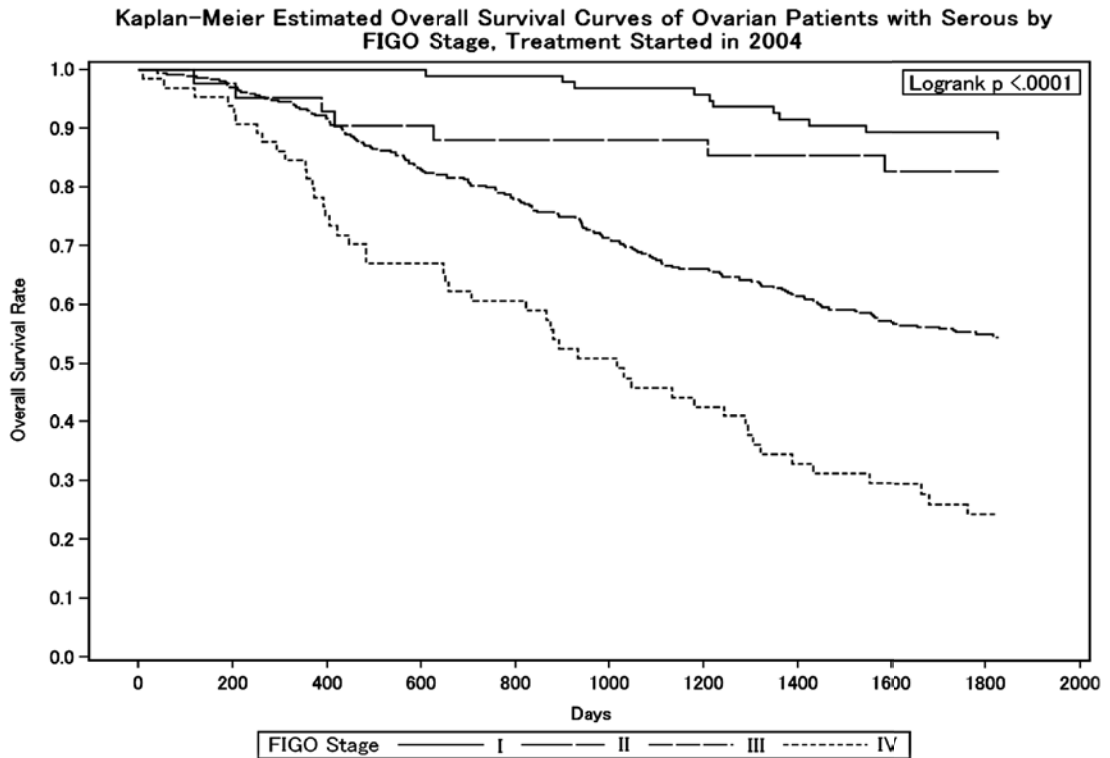
Figure 5.



Test of Equality over Strata			
Test	Chi-Square	DF	Pr > Chi-Square
Log-rank	80.6587	4	<.0001
Wilcoxon	73.8811	4	<.0001
-2Log (LR)	84.3433	4	<.0001

Adjustment for Multiple Comparisons for the Log-rank Test				
Strata Comparison		Chi-Square	p-Values	
Histological Type	Histological Type		Raw	Tukey-Kramer
Serous	Mucinous	26.3145	<.0001	<.0001
Serous	Endometrioid	37.7240	<.0001	<.0001
Serous	Clear	23.0357	<.0001	<.0001
Serous	Other	1.6755	0.1955	0.6947
Mucinous	Endometrioid	3.3481	0.0673	0.3563
Mucinous	Clear	0.1232	0.7256	0.9968
Mucinous	Other	31.0010	<.0001	<.0001
Endometrioid	Clear	1.6520	0.1987	0.7003
Endometrioid	Other	49.3045	<.0001	<.0001
Clear	Other	26.8833	<.0001	<.0001

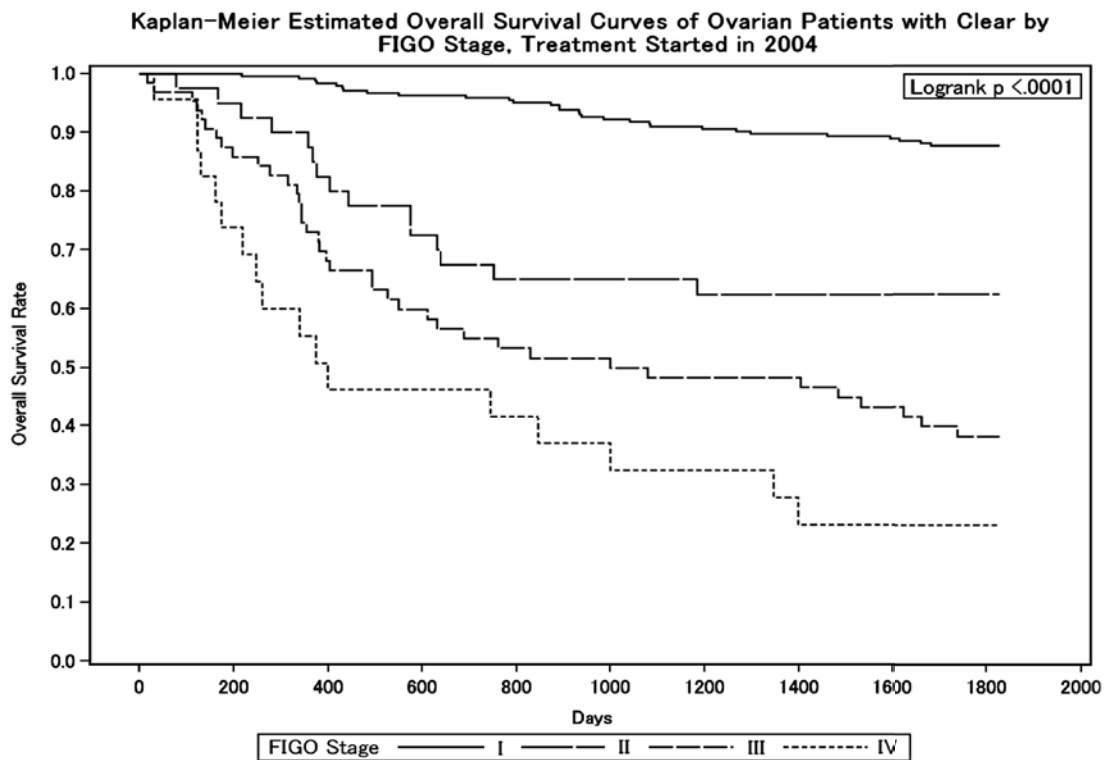
Figure 6.



Test of Equality over Strata			
Test	Chi-Square	DF	Pr > Chi-Square
Log-rank	85.1571	3	<.0001
Wilcoxon	83.0800	3	<.0001
-2Log (LR)	84.8529	3	<.0001

Adjustment for Multiple Comparisons for the Log-rank Test				
Strata Comparison		Chi-Square	p-Values	
FIGO Stage	FIGO Stage		Raw	Tukey-Kramer
I	II	10.6379	0.0011	0.0061
I	III	21.9190	<.0001	<.0001
I	IV	70.4773	<.0001	<.0001
II	III	10.8489	0.001	0.0055
II	IV	44.4063	<.0001	<.0001
III	IV	0.7521	0.3858	0.8218

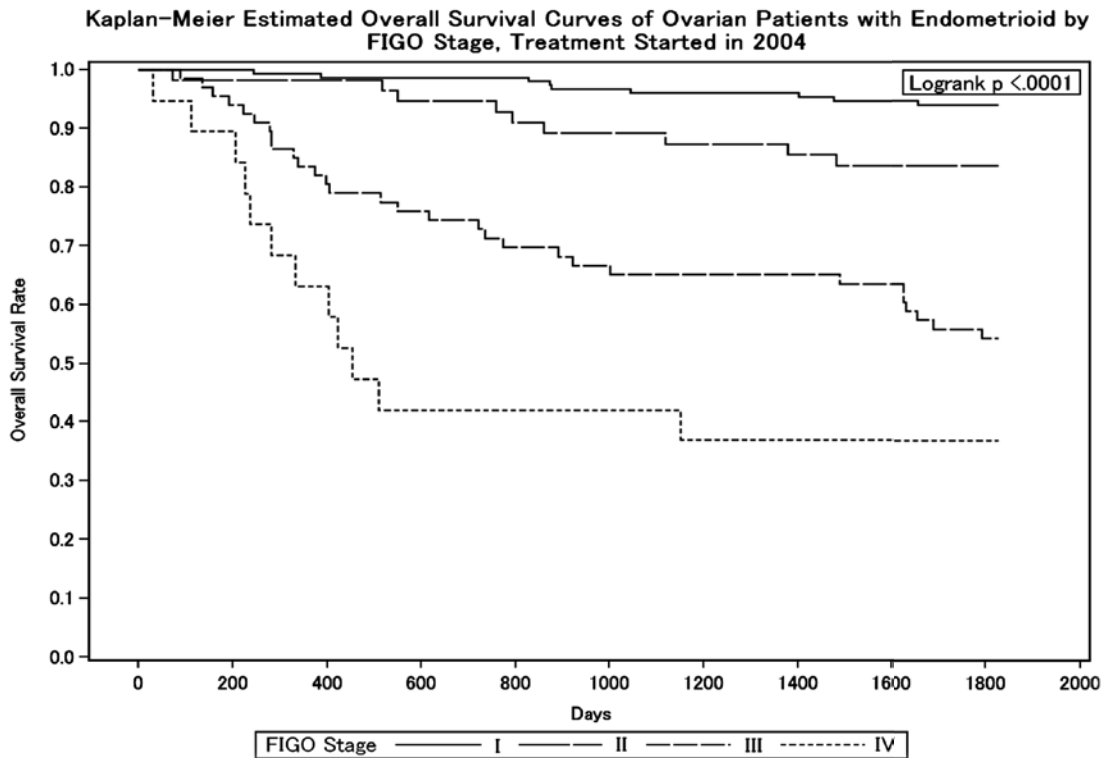
Figure 7.



Test of Equality over Strata			
Test	Chi-Square	DF	Pr > Chi-Square
Log-rank	135.0576	3	<.0001
Wilcoxon	138.5251	3	<.0001
-2Log (LR)	105.2109	3	<.0001

Adjustment for Multiple Comparisons for the Log-rank Test				
Strata Comparison		Chi-Square	p-Values	
FIGO Stage	FIGO Stage		Raw	Tukey-Kramer
I	II	58.6495	<.0001	<.0001
I	III	99.9121	<.0001	<.0001
I	IV	122.6000	<.0001	<.0001
II	III	18.0678	<.0001	0.0001
II	IV	5.3179	0.0211	0.0966
III	IV	9.1504	0.0025	0.0133

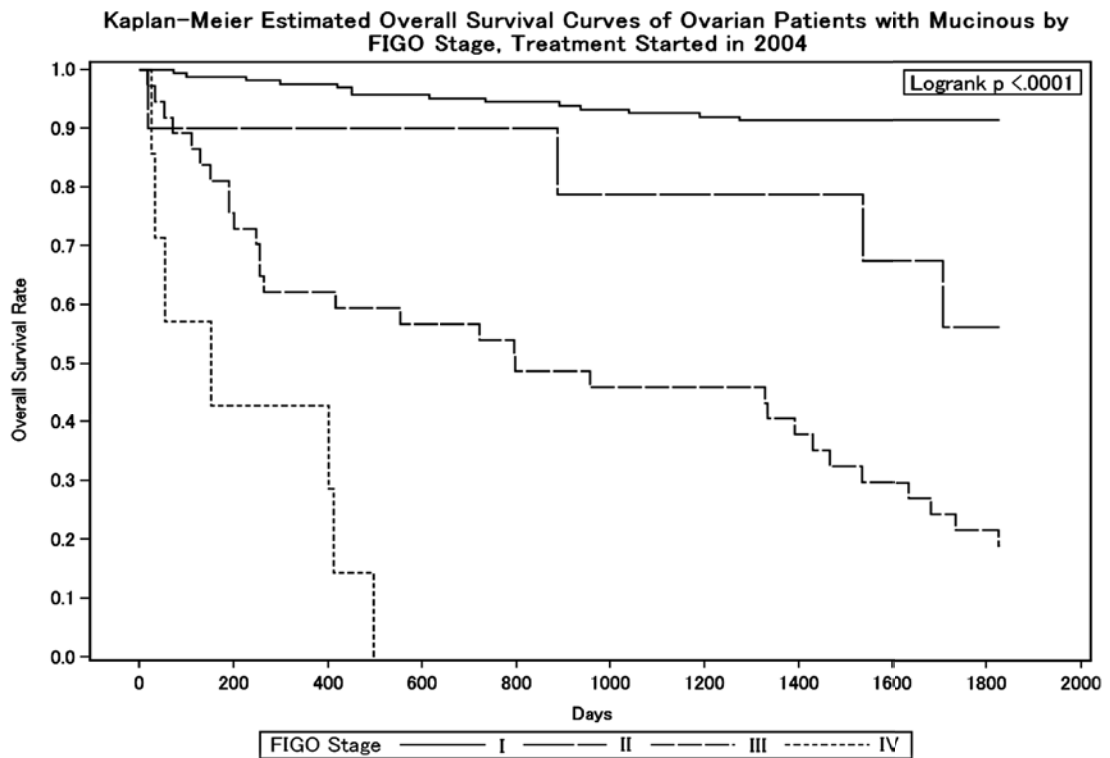
Figure 8.



Test of Equality over Strata			
Test	Chi-Square	DF	Pr > Chi-Square
Log-rank	88.1257	3	<.0001
Wilcoxon	90.5150	3	<.0001
-2Log (LR)	70.7283	3	<.0001

Adjustment for Multiple Comparisons for the Log-rank Test				
Strata Comparison		Chi-Square	p-Values	
FIGO Stage	FIGO Stage		Raw	Tukey-Kramer
I	II	13.1685	0.0003	0.0016
I	III	51.0589	<.0001	<.0001
I	IV	61.7717	<.0001	<.0001
II	III	19.2921	<.0001	<.0001
II	IV	12.2901	0.0005	0.0026
III	IV	6.1195	0.0134	0.0641

Figure 9.



Test of Equality over Strata			
Test	Chi-Square	DF	Pr > Chi-Square
Log-rank	192.7271	3	<.0001
Wilcoxon	180.3320	3	<.0001
-2Log (LR)	115.1073	3	<.0001

Adjustment for Multiple Comparisons for the Log-rank Test				
Strata Comparison		Chi-Square	p-Values	
FIGO Stage	FIGO Stage		Raw	Tukey-Kramer
I	II	83.2735	<.0001	<.0001
I	III	126.4000	<.0001	<.0001
I	IV	163.0000	<.0001	<.0001
II	III	56.1301	<.0001	<.0001
II	IV	8.2682	0.004	0.021
III	IV	45.2190	<.0001	<.0001

## 卵巣境界悪性腫瘍治療成績

## Statement for the Year 2004, Inclusive, Borderline Ovarian Tumor

Table A. 5-Year Results, Stage I-IV

A	B	C	D	E	F	G	H	I	J	K
Institution	Total No. Treated	no description	Alive with no Evidence of the Disease	Alive with Carcinoma	Alive with or without Carcinoma Unknown	Died of Carcinoma	Died of Other Malignant Tumor	Died of Intercurrent Disease	Cause of Death Unknown	Lost to follow-up
○ 10003	HOKKAIDO CANCER CENTER	4	0	2	0	0	2	0	0	0
○ 10025	SAPPORO MED. UNIV.	2	0	2	0	0	0	0	0	0
○ 10027	HOKKAIDO UNIV.	7	0	6	0	0	0	0	0	1
○ 10028	KKR SAPPORO MED. CENTER	1	0	1	0	0	0	0	0	0
10037	ASAHIKAWA CITY HOSP.	1	1	0	0	0	0	0	0	0
10045	KUSHIRO ROSAI HOSP.	2	2	0	0	0	0	0	0	0
○ 20012	HIROSAKI UNIV.	1	0	1	0	0	0	0	0	0
○ 40004	TOHOKU UNIV.	11	0	7	0	2	2	0	0	0
○ 40013	SENDAI MED. CENTER	1	0	1	0	0	0	0	0	0
○ 60002	YAMAGATA PREF. CENTRAL HOSP.	4	0	4	0	0	0	0	0	0
60005	YAMAGATA UNIV.	4	0	3	0	0	0	0	0	1
70003	FUKUSHIMA MED. UNIV.	3	0	2	0	0	0	0	0	1
80003	KASUMIGAURA MED. CENTER	1	1	0	0	0	0	0	0	0
○ 80007	TSUKUBA UNIV.	3	0	1	1	0	0	1	0	0
80017	MITO MED. CENTER	3	3	0	0	0	0	0	0	0
80021	HITACHI GENERAL HOSP.	5	4	0	0	0	0	0	0	1
○ 90005	SAISEIKAI UTSUNOMIYA HOSP.	5	0	5	0	0	0	0	0	0
○ 90011	ASHIKAGA RED CROSS HOSP.	6	0	6	0	0	0	0	0	0
90015	JICHI MED. UNIV.	9	0	6	0	0	0	0	0	3
○ 100012	GUNMA UNIV.	4	0	4	0	0	0	0	0	0
100022	GUNMA PREF. CANCER CENTER	5	0	1	0	0	0	0	0	4
○ 110008	SAITAMA SHAKAI HOKEN HOSP.	2	0	2	0	0	0	0	0	0
○ 110014	KOSHIGAYA MUNI. HOSP.	6	0	6	0	0	0	0	0	0
110022	SAITAMA MED. CENTER	22	22	0	0	0	0	0	0	0
○ 110023	SAITAMA NATIONAL HOSP.	6	0	6	0	0	0	0	0	0
110027	NATIONAL DEFENSE MED. COLL.	6	6	0	0	0	0	0	0	0
○ 110030	SAITAMA CANCER CENTER	6	0	6	0	0	0	0	0	0
120005	CHIBA UNIV.	2	2	0	0	0	0	0	0	0
120009	NIPPON MED. SCH. CHIBA HOKUSOU HOSP.	9	8	0	0	0	1	0	0	0
120012	MATSUDO CITY HOSP.	8	0	6	0	0	0	0	0	2
120021	JIKEI UNIV. KASHIWA HOSP.	12	0	4	2	0	0	0	0	6
○ 120023	JUNTENDO UNIV. URAYASU HOSP.	6	0	6	0	0	0	0	0	0
120029	ASAHI CENTRAL HOSP.	3	0	2	0	0	0	0	0	1
○ 120035	KAMEDA MED. CENTER	4	0	4	0	0	0	0	0	0
○ 120042	CHIBA CANCER CENTER	1	0	1	0	0	0	0	0	0
○ 130005	MITUI MEMORIAL HOSP.	1	0	1	0	0	0	0	0	0
○ 130009	NATIONAL CANCER CENTER	3	0	3	0	0	0	0	0	0
130013	JIKEI UNIV.	11	0	7	0	0	0	0	0	4
○ 130023	JUNTENDO UNIV.	6	0	6	0	0	0	0	0	0
130024	TOKYO MED. DENT. UNIV.	7	7	0	0	0	0	0	0	0
130025	NIPPON MED. SCH.	7	7	0	0	0	0	0	0	0
○ 130026	TOKYO UNIV.	10	1	8	0	0	0	0	0	1
○ 130029	TOKYO WOMENS MED. UNIV. MED. CENTER EAST	1	0	1	0	0	0	0	0	0
130034	JIKEI UNIV. KATSUSHIKA MED. CENTER	5	5	0	0	0	0	0	0	0
○ 130044	NTT MED. CENTER TOKYO	5	0	5	0	0	0	0	0	0
130046	SHOWA UNIV.	3	0	1	0	0	0	0	0	2
○ 130050	TOHO UNIV. OMORI HOSP.	3	0	3	0	0	0	0	0	0
130055	RED CROSS MED. CENTER	9	0	6	0	0	0	0	0	3
○ 130063	KOSEI CENTRAL HOSP.	2	0	2	0	0	0	0	0	0
130074	TOKYO MED. UNIV.	16	16	0	0	0	0	0	0	0
130077	KEIO UNIV.	12	0	7	0	0	0	0	0	5
130080	NATIONAL CENTER FOR GLOBAL HEALTH AND MED.	2	2	0	0	0	0	0	0	0

A		B	C	D	E	F	G	H	I	J	K
Institution		Total No. Treated	no description	Alive with no Evidence of the Disease	Alive with Carcinoma	Alive with or without Carcinoma Unknown	Died of Carcinoma	Died of Other Malignant Tumor	Died of Intercurrent Disease	Cause of Death Unknown	Lost to follow-up
130081	TOKYO WOMENS MED. UNIV.	1	1	0	0	0	0	0	0	0	0
130092	TEIKYO UNIV.	4	0	2	0	0	0	0	0	0	2
130095	NIHON UNIV.	10	0	8	0	0	0	0	0	0	2
130099	MUSASHINO RED CROSS HOSP.	8	8	0	0	0	0	0	0	0	0
130100	KYORIN UNIV.	1	0	1	0	0	0	0	0	0	0
130106	NATIONAL DESASTER MED. CENTER	1	1	0	0	0	0	0	0	0	0
130112	MACHIDA MUNI. HOSP.	2	0	0	0	0	0	0	0	0	2
130116	JIKEI UNIV. 3RD HOSP.	9	0	8	1	0	0	0	0	0	0
130119	NIPPON MED. SCH. TAMA NAGAYAMA HOSP.	1	0	1	0	0	0	0	0	0	0
130122	TOKYO METRO. KOMAGOME HOSP.	6	0	5	0	0	0	0	0	0	1
130125	CANCER INST. HOSP.	10	0	10	0	0	0	0	0	0	0
130135	TAMA-NAMBU CHIKI HOSP.	6	4	0	0	0	0	0	0	0	2
140001	KAWASAKI MUNI. HOSP.	9	9	0	0	0	0	0	0	0	0
140006	NIPPON MED. SCH. MUSASHI KOSUGI HOSP.	2	0	1	0	0	0	0	0	0	1
140012	ST. MARIANNA UNIV.	8	8	0	0	0	0	0	0	0	0
140017	SHOWA UNIV. FUJIGAOKA HOSP.	5	0	5	0	0	0	0	0	0	0
140020	KITAZATO UNIV.	5	0	2	0	0	0	0	0	0	3
140029	YOKOHAMA CITY UNIV.	5	0	4	0	0	0	1	0	0	0
140035	YOKOHAMA MUNI. HOSP.	2	0	2	0	0	0	0	0	0	0
140037	ST. MARIANNA UNIV. YOKOHAMA CITY SEIBU HOSP.	4	4	0	0	0	0	0	0	0	0
140038	YAMATO MUNI. HOSP.	1	1	0	0	0	0	0	0	0	0
140039	ATSUGI CITY HOSP.	2	2	0	0	0	0	0	0	0	0
140043	YOKOHAMA SAKAE KYOSAI HOSP.	1	1	0	0	0	0	0	0	0	0
140054	ISEHARA KYODO HO S P.	1	0	1	0	0	0	0	0	0	0
140055	TOKAI UNIV.	6	0	5	0	0	0	0	0	0	1
150002	YAMANASHI PREF. CENTRAL HOSP.	3	3	0	0	0	0	0	0	0	0
150006	UNIV. OF YAMANASHI	7	0	5	0	0	0	0	0	0	2
160006	SHINSHU UNIV.	6	0	4	0	0	0	0	0	0	2
160022	NAGANO MUNI. HOSP.	1	1	0	0	0	0	0	0	0	0
170006	FUJI CITY GENERAL HOSP.	1	0	1	0	0	0	0	0	0	0
180001	NAGAOKA RED CROSS HOSP.	1	0	1	0	0	0	0	0	0	0
180009	NIIGATA UNIV.	8	8	0	0	0	0	0	0	0	0
180010	NIIGATA CANCER CENTER HOSP.	2	0	2	0	0	0	0	0	0	0
190001	TOYAMA UNIV.	4	0	2	0	0	0	0	0	0	2
190002	TOYAMA RED CROSS HOSP.	2	0	2	0	0	0	0	0	0	0
190003	TOYAMA PREF. CENTRAL HOSP.	3	3	0	0	0	0	0	0	0	0
200001	KANAZAWA MED. UNIV.	1	0	1	0	0	0	0	0	0	0
220002	GIFU UNIV.	1	0	1	0	0	0	0	0	0	0
230001	TOYOHASHI MUNI. HOSP.	7	5	0	0	0	0	0	0	2	0
230014	RED CROSS NAGOYA DAIICHI HOSP.	7	0	6	1	0	0	0	0	0	0
230024	NAGOYA MED. CENTER	1	1	0	0	0	0	0	0	0	0
230031	NAGOYA UNIV.	4	0	4	0	0	0	0	0	0	0
230034	NAGOYA CITY UNIV.	6	0	6	0	0	0	0	0	0	0
230035	FUJITA HEALTH UMIN.	3	0	3	0	0	0	0	0	0	0
230040	AICHI MED. UNIV.	3	2	0	0	0	0	0	0	0	1
230052	AICHI CANCER CENTER	2	0	2	0	0	0	0	0	0	0
240002	MIE PREF. GENERAL MED. CENTER	4	0	4	0	0	0	0	0	0	0
240003	YOKKAICHI MUNI. HOSP.	2	0	1	0	0	0	0	0	0	1
240009	MIE UNIV.	6	0	4	0	0	0	0	0	0	2
240015	ISE RED CROSS HOSP.	2	0	2	0	0	0	0	0	0	0
260002	KYOTO 2ND RED CROSS HOSP.	3	0	2	0	0	0	0	0	0	1
260007	KYOTO 1ST RED CROSS HOSP.	2	0	2	0	0	0	0	0	0	0
260009	KYOTO UNIV.	6	0	6	0	0	0	0	0	0	0
260013	KYOTO KATSURA HOSP.	2	0	1	0	0	0	0	0	0	1
260017	SAISEIKAI KYOTO HOSP.	1	0	1	0	0	0	0	0	0	0
270007	OSAKA CITY GENERAL HOSP.	4	0	2	0	0	0	0	0	0	2
270013	OSAKA POLICE HOSP.	5	0	3	0	0	0	0	0	0	2

	A	B	C	D	E	F	G	H	I	J	K
	Institution	Total No. Treated	no description	Alive with no Evidence of the Disease	Alive with Carcinoma	Alive with or without Carcinoma Unknown	Died of Carcinoma	Died of Other Malignant Tumor	Died of Intercurrent Disease	Cause of Death Unknown	Lost to follow-up
○	270016 OSAKA CITY UNIV.	12	0	9	1	0	1	0	0	0	1
	270035 OSAKA UNIV.	1	1	0	0	0	0	0	0	0	0
○	270041 OSAKA MED. COLL.	8	0	6	0	0	1	0	0	0	1
	270042 KANSAI MED. UNIV.	8	1	1	0	0	0	0	0	1	5
	270056 KINKI UNIV.	1	1	0	0	0	0	0	0	0	0
○	270062 OSAKA ROUSAI HOSP.	4	0	3	0	0	1	0	0	0	0
○	270101 OSAKA MED. CENTER FOR CANCER AND CVD	11	0	9	0	0	0	0	0	0	2
	280001 KOBE UNIV.	1	0	0	0	0	0	0	0	0	1
	280010 KOBE MED. CENTER	2	0	0	0	0	0	0	0	0	2
○	280015 KANSAI ROSAI HOSP.	4	0	4	0	0	0	0	0	0	0
	280021 HYOGO MED. COLL.	5	5	0	0	0	0	0	0	0	0
○	280028 TOYOOKA PUBLIC HOSP.	4	0	4	0	0	0	0	0	0	0
	280030 HIMEJI RED CROSS HOSP.	8	8	0	0	0	0	0	0	0	0
	280031 HIMEJI MED. CENTER	1	1	0	0	0	0	0	0	0	0
○	280033 HYOGO CANCER CENTER	3	0	3	0	0	0	0	0	0	0
○	290003 NARA PREF. NARA HOSP.	6	0	5	1	0	0	0	0	0	0
	290004 TENRI HOSP.	3	0	2	0	0	0	0	0	0	1
	290007 NARA MED. UNIV.	1	0	0	0	0	0	0	0	0	1
	300002 JAPAN RED CROSS WAKAYAMA MED. CENTER	6	0	4	0	0	0	0	0	0	2
	300003 WAKAYAMA MED. UNIV.	8	8	0	0	0	0	0	0	0	0
○	310007 TOTTORI UNIV.	1	0	1	0	0	0	0	0	0	0
○	320003 SHIMANE UNIV.	5	0	5	0	0	0	0	0	0	0
	330002 OKAYAMA RED CROSS HOSP.	1	0	0	0	0	0	0	0	0	1
○	330003 KAWASAKI HOSP.	2	0	2	0	0	0	0	0	0	0
	330004 OKAYAMA SAISEIKAI GENERAL HOSP.	2	0	1	0	0	0	0	0	0	1
○	330008 KURASHIKI CENTRAL HOSP.	7	0	6	1	0	0	0	0	0	0
	330009 KAWASAKI MED. SCH.	2	2	0	0	0	0	0	0	0	0
○	340001 FUKUYAMA MED. CENTER	1	0	1	0	0	0	0	0	0	0
	340002 ONOMICHI GENERAL HOSP.	4	4	0	0	0	0	0	0	0	0
	340010 HIROSHIMA CITY ASA HOSP.	5	1	2	0	0	0	1	0	0	1
○	340012 HIROSHIMA UNIV.	5	0	5	0	0	0	0	0	0	0
○	340014 HIROSHIMA PREF. HOSP.	10	0	8	0	0	1	0	0	0	1
	340017 KURE KYOSAI HOSP.	3	3	0	0	0	0	0	0	0	0
	350008 YAMAGUCHI RED CROSS HOSP.	3	0	2	0	0	0	0	0	0	1
○	350009 YAMAGUCHI UNIV.	1	0	1	0	0	0	0	0	0	0
○	360003 TOKUSHIMA UNIV.	5	0	5	0	0	0	0	0	0	0
○	360005 TOKUSHIMA PREF. CENTRAL HOSP.	1	0	1	0	0	0	0	0	0	0
○	370001 TAKAMATSU RED CROSS HOSP.	2	0	2	0	0	0	0	0	0	0
	370003 KAGAWA PREF. CENTRAL HOSP.	3	3	0	0	0	0	0	0	0	0
○	380001 SHIKOKU CANCER CENTER	10	0	10	0	0	0	0	0	0	0
○	380005 MATSUYAMA RED CROSS HOSP.	1	0	0	0	0	1	0	0	0	0
	380006 EHIME UNIV.	1	0	1	0	0	0	0	0	0	0
○	390003 KOCHI HEALTH SCIENCES CENTER	3	0	3	0	0	0	0	0	0	0
	390006 KOCHI UNIV.	2	0	1	0	0	0	0	0	0	1
	400007 KYUSHU KOSEINENKIN HOSP.	3	0	2	0	0	0	0	0	0	1
○	400008 UNIV. OCCUPATIONAL & ENVIRONMENTAL HEALTH	7	0	7	0	0	0	0	0	0	0
	400010 KYUSHU MED. CENTER	3	0	3	0	0	0	0	0	0	0
○	400012 KYUSHU UNIV.	8	0	7	0	0	0	0	0	0	1
○	400013 FUKUOKA UNIV.	12	0	11	0	0	0	0	0	0	1
	400014 FUKUOKA RED CROSS HOSP.	6	0	4	0	0	0	0	0	0	2
○	400020 KURUME UNIV.	3	0	3	0	0	0	0	0	0	0
	400040 KYUSHU CANCER CENTER	5	0	3	0	0	0	0	0	0	2
	410002 SAGA PREF. HOSP. KOSEIKAN	4	4	0	0	0	0	0	0	0	0
○	410005 SAGA UNIV.	1	0	1	0	0	0	0	0	0	0
	420001 NAGASAKI MUNI. HOSP.	3	0	0	0	0	0	0	0	0	3
	420002 NAGASAKI UNIV.	4	0	1	0	0	0	1	0	0	2
○	420003 RED CROSS NAGASAKI ATOMIC BOMB HOSP.	1	0	1	0	0	0	0	0	0	0

A		B	C	D	E	F	G	H	I	J	K
Institution		Total No. Treated	no description	Alive with no Evidence of the Disease	Alive with Carcinoma	Alive with or without Carcinoma Unknown	Died of Carcinoma	Died of Other Malignant Tumor	Died of Intercurrent Disease	Cause of Death Unknown	Lost to follow-up
○ 420006	SASEBO KYOSAI HOSP.	5	0	5	0	0	0	0	0	0	0
	430001 KUMAMOTO MED. CENTER	2	0	1	0	0	0	0	0	0	1
○ 430002	KUMAMOTO UNIV.	9	0	8	0	0	0	0	0	0	1
○ 430003	KUMAMOTO CITY HOSP.	3	0	2	0	0	1	0	0	0	0
○ 440002	OITA PREF. HOSP.	5	0	3	1	0	1	0	0	0	0
	450001 MIYAZAKI PREF. HOSP.	10	0	6	0	0	0	0	0	0	4
	460001 KAGOSHIMA UNIV.	2	0	1	0	0	0	0	0	0	1
	460004 KAGOSHIMA CITY HOSP.	6	0	3	0	0	0	0	0	0	3
	470008 RYUKYU UNIV.	7	0	5	0	0	0	0	0	0	2
	470010 OKINAWA PREF. CHUBU HOSP.	3	0	1	0	0	0	0	0	0	2
Total		787	191	453	9	2	11	4	1	3	113

Table 1. No. of Patients by Stage and Age

FIGO Stage	Age	~19		20~29		30~39		40~49		50~59		60~69		70~79		80~		Total	
		No.	%	No.	%	No.	%	No.	%	No.	%	No.	%	No.	%	No.	%	No.	%
I	A	19	2.4	84	10.7	99	12.6	106	13.5	99	12.6	72	9.2	40	5.1	17	2.2	536	68.1
	B	0	0.0	1	0.1	1	0.1	3	0.4	1	0.1	2	0.3	1	0.1	0	0.0	9	1.1
	C(b)	5	0.6	17	2.2	16	2.0	13	1.7	30	3.8	14	1.8	7	0.9	3	0.4	105	13.3
	C(1)	0	0.0	1	0.1	0	0.0	1	0.1	1	0.1	0	0.0	1	0.1	0	0.0	4	0.5
	C(2)	1	0.1	3	0.4	4	0.5	5	0.6	1	0.1	4	0.5	2	0.3	0	0.0	20	2.5
	C(a)	2	0.3	6	0.8	6	0.8	9	1.1	14	1.8	7	0.9	1	0.1	1	0.1	46	5.8
	total	27	3.4	112	14.2	126	16.0	137	17.4	146	18.6	99	12.6	52	6.6	21	2.7	720	91.5
II	A	0	0.0	0	0.0	0	0.0	0	0.0	0	0.0	1	0.1	0	0.0	0	0.0	1	0.1
	B	0	0.0	0	0.0	3	0.4	0	0.0	0	0.0	0	0.0	1	0.1	0	0.0	4	0.5
	C(b)	0	0.0	1	0.1	1	0.1	1	0.1	1	0.1	3	0.4	0	0.0	0	0.0	7	0.9
	C(1)	0	0.0	1	0.1	0	0.0	0	0.0	0	0.0	0	0.0	0	0.0	0	0.0	1	0.1
	C(2)	0	0.0	0	0.0	0	0.0	0	0.0	0	0.0	1	0.1	1	0.1	0	0.0	2	0.3
	C(a)	0	0.0	1	0.1	0	0.0	0	0.0	1	0.1	0	0.0	0	0.0	0	0.0	2	0.3
	total	0	0.0	3	0.4	4	0.5	1	0.1	2	0.3	5	0.6	2	0.3	0	0.0	17	2.2
III	A	0	0.0	3	0.4	1	0.1	3	0.4	2	0.3	0	0.0	0	0.0	0	0.0	9	1.1
	B	1	0.1	0	0.0	1	0.1	0	0.0	0	0.0	3	0.4	1	0.1	0	0.0	6	0.8
	C	1	0.1	2	0.3	2	0.3	3	0.4	3	0.4	3	0.4	7	0.9	0	0.0	21	2.7
	total	2	0.3	5	0.6	4	0.5	6	0.8	5	0.6	6	0.8	8	1.0	0	0.0	36	4.6
IV		0	0.0	1	0.1	1	0.1	1	0.1	0	0.0	1	0.1	0	0.0	0	0.0	4	0.5
Neoadjuvant Chemotherapy		0	0.0	0	0.0	0	0.0	0	0.0	3	0.4	2	0.3	0	0.0	0	0.0	5	0.6
Unknown		0	0.0	1	0.1	2	0.3	0	0.0	1	0.1	1	0.1	0	0.0	0	0.0	5	0.6
Total		29	3.7	122	15.5	137	17.4	145	18.4	157	20.0	114	14.5	62	7.9	21	2.7	787	

Table 2. 5-Year Results, Treatment Started in 2004

5-year result	No. of patients	%
Alive with no Evidence of the Disease	339	91.1
Alive with Carcinoma	7	1.9
Alive with or without Carcinoma Unknown	2	0.5
Died of Carcinoma	11	3.0
Died of Other Malignant Tumor	1	0.3
Died of Intercurrent Disease	1	0.3
Cause of Death Unknown	0	0.0
Lost to follow-up	11	3.0
Total	372	

**Table 3. Stage, Treatment Started in 2004**

FIGO Stage		Patients treated	
		No.	
I	A	241	336
	B	3	
	C(b)	62	
	C(1)	2	
	C(2)	7	
	C(a)	21	
II	A	1	9
	B	2	
	C(b)	4	
	C(1)	0	
	C(2)	0	
	C(a)	2	
III	A	8	20
	B	3	
	C	9	
IV		4	
Neoadjuvant Chemotherapy		3	
Unknown		0	
Total		372	

**Table 4. Stage, Treatment Started in 2004  
Surface Epithelial-Stromal Tumors**

FIGO Stage		Patients treated	
		No.	
I	A	210	291
	B	3	
	C(b)	53	
	C(1)	2	
	C(2)	5	
	C(a)	18	
II	A	0	4
	B	0	
	C(b)	4	
	C(1)	0	
	C(2)	0	
	C(a)	0	
III	A	6	16
	B	3	
	C	7	
IV		2	
Neoadjuvant Chemotherapy		2	
Unknown		0	
Total		315	

**Table 5. Histology, Treatment Started in 2004**

Stage and Histological Type	FIGO Stage	Patients treated
		No.
Sex Cord/Stromal Tumors	I	27
	II	2
	III	3
	IV	1
Germ Cell Tumors	I	18
	II	3
	III	1
	IV	2

**Table 6. Stage and Histological Type, Treatment Started in 2004**

FIGO Stage	Histology	Patients treated	
		No.	%
I	Serous	58	19.9
	Mucinous	218	74.9
	Endometrioid	6	2.1
	Clear	0	0.0
	Other	9	3.1
II	Serous	1	25.0
	Mucinous	3	75.0
	Endometrioid	0	0.0
	Clear	0	0.0
	Other	0	0.0
III	Serous	9	56.3
	Mucinous	7	43.8
	Endometrioid	0	0.0
	Clear	0	0.0
	Other	0	0.0
IV	Serous	2	100.0
	Mucinous	0	0.0
	Endometrioid	0	0.0
	Clear	0	0.0
	Other	0	0.0
Neoadjuvant Chemotherapy	Serous	1	50.0
	Mucinous	1	50.0
	Endometrioid	0	0.0
	Clear	0	0.0
	Other	0	0.0
Unknown	Serous	0	0.0
	Mucinous	0	0.0
	Endometrioid	0	0.0
	Clear	0	0.0
	Other	0	0.0