

## 報 告

## 婦人科腫瘍委員会

## 第49回治療年報

2001年に治療した子宮頸癌，子宮体癌の5年治療成績について

## 重要なお知らせ

婦人科腫瘍委員会 委員長 櫻木 範明  
婦人科悪性腫瘍登録業務に関する小委員会 委員長 吉川 史隆

日本産科婦人科学会婦人科腫瘍委員会では臓器別がん登録として子宮頸癌，子宮体癌，卵巣癌について登録施設から年次(暦年)毎に新規治療症例の報告を受け，集計結果を患者年報として公表しています。この登録症例については治療後3年，5年での予後追跡調査を行い，治療成績を治療年報として公表してきました。

この度治療成績の解析方法に大きな変更を行いましたのでお知らせいたします。要点は以下の通りです。

1. 従来の直接法最小生存率\*による方法から Kaplan-Meier 法に変更しました。
2. 追跡不能症例(Lost to follow-up)が多いと治療成績の信頼性が低下するため，予後追跡報告で追跡不能症例が20%を超える施設のデータは治療成績の解析には用いないこととしています。
3. 予後解析に使用された施設は，施設名の左に○がつけてあります。

\*最小生存率：直接法とは観察開始時点から一定の年限を経過した症例について生存者数を観察対象者数で割った値である。この場合，消息不明例の取扱いによって3種類の生存率が計算される。

すなわち，消息不明例をすべて死亡とみなして計算する最小生存率，すべて生存とみなして計算する最大生存率，消息不明例を対象から除外して計算する推定(概算)生存率の3種類である。

(日本癌治療学会・癌規約総論，金原出版，1991より抜粋)

### 1. はしがき

婦人科腫瘍委員会の第49回治療年報(2001年治療開始例)の報告をいたします(子宮頸癌192機関, 子宮体癌194機関). 第48回治療年報は平成21年12月号(日産婦誌2009: 61: 2159—2197)の本学会誌に掲載されております. 加盟機関の先生方のご苦勞に感謝申し上げます, また婦人科腫瘍委員会の全委員に御礼申し上げます. 今後とも何卒よろしくお願い申し上げます.

### 2. 子宮頸癌治療成績

Table A 5年後の治療転帰

Table 1~8 項目別成績

Figure 1~10 予後5年生存率

### 3. 子宮体癌治療成績

Table A 5年後の治療転帰

Table 1~8 項目別成績

Figure 1~10 予後5年生存率

本報告に関するお問い合わせは婦人科腫瘍委員会宛にお願いいたします.



	A	B	C	D	E	F	G	H	I	J
	Institution	Total No. Treated	no description	Alive with no Evidence of the Disease	Alive with Carcinoma	Died of Carcinoma	Died of Other Malignant Tumor	Died of Intercurrent Disease	Cause of Death Unknown	Lost to follow-up
	63 TOTTORI UNIV.	21	0	11	1	2	0	0	0	7
	64 MORIOKA RED CROSS HOSP.	0	0	0	0	0	0	0	0	0
	65 MATSUYAMA RED CROSS HOSP.	0	0	0	0	0	0	0	0	0
	67 HIROSHIMA UNIV.	26	21	0	0	3	0	0	0	2
○	68 YAMAGUCHI UNIV.	25	0	15	2	5	0	0	0	3
	69 TOYOOKA PUBLIC HOSP.	13	0	7	0	1	1	0	0	4
	70 GUNMA UNIV.	23	16	0	0	6	0	0	0	1
	71 TOKYO POLICE HOSP.	0	0	0	0	0	0	0	0	0
	73 OSAKA KITANO HOSP.	0	0	0	0	0	0	0	0	0
○	77 CHIBA UNIV.	23	0	18	0	4	0	0	0	1
	79 KANSAI MED. UNIV.	27	0	14	0	6	0	1	0	6
	80 KAWASAKI HOSP.(OKAYAMA)	4	0	1	0	0	0	0	0	3
	81 TOUMA HOSP. (SAITAMA)	0	0	0	0	0	0	0	0	0
	82 YAMAGUCHI RED CROSS HOSP.	12	0	8	0	1	0	0	0	3
	83 SASEBO MUNI. HOSP.	0	0	0	0	0	0	0	0	0
	84 NIPPON MED. SCHOOL. 2ND HOSP.	9	7	0	0	2	0	0	0	0
	85 NAGOYA NATIONAL HOSP.	24	6	0	0	3	0	0	0	15
	86 KOSEI HOSP.	0	0	0	0	0	0	0	0	0
	87 HITACHI GENERAL HOSP.	0	0	0	0	0	0	0	0	0
	88 OSAKA RED CROSS HOSP.	11	8	0	0	3	0	0	0	0
	89 NIHON UNIV.	27	0	8	0	8	0	0	0	11
○	90 NAGOYA I RED CROSS HOSP.	19	0	7	0	8	0	2	0	2
	92 INTERNATIONAL MED. CENTER HOSP.	11	11	0	0	0	0	0	0	0
○	94 KUMAMOTO NATIONAL HOSP.	42	0	31	0	10	0	0	0	1
	95 NARA MED. UNIV.	23	23	0	0	0	0	0	0	0
○	96 OSAKA MED. COLL.	53	0	39	0	9	0	0	0	5
	97 KYUSHU UNIV. SEIKEN	11	8	0	0	3	0	0	0	0
	99 OKAYAMA NATIONAL HOSP.	0	0	0	0	0	0	0	0	0
	100 YAMANASHI PREF. CENTRAL HOSP.	34	30	0	0	3	0	0	0	1
○	101 NATIONAL CANCER CENTER	97	0	65	6	22	1	1	0	2
	102 SHIZUOKA PREF. HOSP.	29	0	13	0	8	0	0	0	8
○	103 OSAKA MED. CENTER	62	0	44	1	11	1	0	2	3
○	105 OKAYAMA SAISEIKAI GENERAL HOSP.	1	0	1	0	0	0	0	0	0
	106 KOKURA NATIONAL HOSP.	0	0	0	0	0	0	0	0	0
	107 SHIMADA MUNI. HOSP.	2	2	0	0	0	0	0	0	0
	109 FUKUI RED CROSS HOSP.	9	0	6	0	1	0	0	0	2
	110 OSAKA POLICE HOSP.	8	0	5	0	0	0	0	0	3
○	111 HYOGO CANCER CENTER	86	0	50	9	10	0	1	1	15
	112 OHTSU RED CROSS HOSP.	17	0	10	0	3	0	0	0	4
	114 FUKUOKA NATIONAL HOSP.	18	0	10	0	4	0	0	0	4
○	116 AICHI CANCER CENTER	75	0	51	2	12	0	0	0	10
○	117 KANAGAWA CANCER CENTER	97	0	66	0	23	0	0	7	1
○	118 OITA PREF. HOSP.	37	0	19	0	11	0	0	0	7
	119 TOYAMA PREF. CENTRAL HOSP.	20	14	0	0	4	0	0	0	2
	120 TOKUSHIMA UNIV.	13	12	0	0	1	0	0	0	0
	121 SHOWA UNIV.	17	0	8	2	3	0	0	0	4
○	122 NIIGATA CANCER CENTER	21	0	17	0	1	0	0	0	3
	123 HIROSHIMA MUNI. HOSP.	30	0	13	0	3	0	1	0	13
	124 KYOTO 1ST RED CROSS HOSP.	0	0	0	0	0	0	0	0	0
○	125 YAMAGATA PREF. CENTRAL HOSP.	9	0	9	0	0	0	0	0	0
○	126 WAKAYAMA MED. UNIV.	27	0	17	0	7	1	0	0	2
○	127 TAKAMATSU RED CROSS HOSP.	14	0	12	0	1	0	0	0	1
○	128 KAGAWA PREF. CENTRAL HOSP.	9	0	6	0	2	0	1	0	0

	A	B	C	D	E	F	G	H	I	J
	Institution	Total No. Treated	no description	Alive with no Evidence of the Disease	Alive with Carcinoma	Died of Carcinoma	Died of Other Malignant Tumor	Died of Intercurrent Disease	Cause of Death Unknown	Lost to follow-up
	129 KAGOSHIMA MUNI. HOSP.	64	60	0	0	4	0	0	0	0
○	130 FUKUYAMA NATIONAL HOSP.	17	0	12	0	5	0	0	0	0
	131 TOKYO MED. UNIV.	20	20	0	0	0	0	0	0	0
○	132 SHIKOKU CANCER CENTER	74	0	49	3	9	0	2	0	11
○	133 KAWASAKI MUNI. HOSP.	31	0	19	0	8	0	0	0	4
	134 TOHO UNIV.	0	0	0	0	0	0	0	0	0
○	136 ONOMICHI HOSP.	7	0	3	0	2	1	0	0	1
	137 KUMAMOTO MUNI. HOSP.	0	0	0	0	0	0	0	0	0
	139 KYOUNDO HOSP.	12	0	5	1	1	0	0	0	5
	140 KYUSHU KOSEINENKIN HOSP.	24	15	0	0	2	0	1	0	6
○	141 KURE NATIONAL HOSP.	30	0	26	0	2	0	0	0	2
○	143 GUNMA PREF. CANCER CENTER	58	0	48	0	10	0	0	0	0
○	144 TOKUSHIMA PREF. CENTRAL HOSP.	12	0	11	0	0	0	1	0	0
○	145 FUKUOKA UNIV.	30	0	16	2	5	0	1	0	6
	146 TENRI HOSP.	28	0	15	0	5	0	0	0	8
○	147 KASUMIGAURA NATIONAL HOSP.	14	0	9	0	3	0	2	0	0
	148 CHIBA PREF. CANCER CENTER	41	0	21	0	8	0	0	0	12
○	149 KYUSHU CANCER CENTER	51	0	38	0	9	0	1	1	2
○	150 NAGANO RED CROSS HOSP.	23	0	15	0	8	0	0	0	0
	151 CHIBA MUNI. HOSP.	0	0	0	0	0	0	0	0	0
	152 KANAZAWA MED. UNIV.	4	0	2	0	1	0	0	0	1
○	153 NATIONAL INS. OF RADIOLOGICAL SCIENCES	54	0	24	0	17	0	3	0	10
○	154 RYUKYU UNIV.	90	0	57	1	20	0	0	1	11
○	155 KOCHI MUNI. HOSP.	5	0	4	1	0	0	0	0	0
	156 FUKUI PREF. HOSP.	0	0	0	0	0	0	0	0	0
○	157 SAITAMA CANCER CENTER	96	0	57	3	25	1	0	4	6
	158 KINKI UNIV.	28	25	0	0	2	0	0	0	1
○	159 NAGASAKI ATOMIC BOMB HOSP.	7	0	5	0	2	0	0	0	0
	160 HIMEJI RED CROSS HOSP.	25	24	0	0	1	0	0	0	0
	161 TOKYO METRO. KOMAGOME HOSP.	33	0	12	1	8	0	2	2	8
	163 JICHI MED. UNIV.	37	0	20	0	1	0	0	0	16
	164 MURORAN MUNI. HOSP.	0	0	0	0	0	0	0	0	0
○	166 TOCHIGI NATIONAL HOSP.	19	0	12	0	5	0	1	0	1
	167 ST. MARIANNA UNIV.	13	4	7	1	1	0	0	0	0
	168 KITAZATO UNIV.	57	2	35	0	9	0	0	0	11
	169 AKITA UNIV.	0	0	0	0	0	0	0	0	0
○	170 KANSAI ROSAI HOSP.	10	0	7	2	1	0	0	0	0
	171 KYOTO MUNI. HOSP.	16	15	0	0	1	0	0	0	0
	172 MITO NATIONAL HOSP.	26	19	0	0	4	1	0	0	2
○	173 ASAHIKAWA MED. COLL.	15	0	10	0	2	0	0	0	3
	174 WAKAYAMA ROSAI HOSP.	0	0	0	0	0	0	0	0	0
	175 SHIMANE UNIV.	9	6	0	0	0	0	1	0	2
	176 KAWASAKI MED. SCHOOL	13	8	0	0	4	1	0	0	0
○	177 SAITAMA NATIONAL HOSP.	17	0	6	1	7	0	0	0	3
	178 TOYAMA UNIV.	8	7	0	0	1	0	0	0	0
○	179 TSUKUBA UNIV.	41	0	20	2	11	0	0	3	5
	180 HYOGO MED. COLL.	24	24	0	0	0	0	0	0	0
	181 AICHI MED. UNIV.	22	0	10	1	4	0	0	0	7
	182 NATIONAL DEFENSE MED. COLL.	15	15	0	0	0	0	0	0	0
	183 KOCHI UNIV.	15	0	4	0	2	0	1	0	8
○	184 KYOTO 2ND RED CROSS HOSP.	22	0	12	1	5	0	0	0	4
○	185 SAGA UNIV.	21	0	17	0	1	0	1	1	1
	186 NAGAOKA RED CROSS HOSP.	20	14	0	0	2	0	0	0	4

	A	B	C	D	E	F	G	H	I	J
	Institution	Total No. Treated	no description	Alive with no Evidence of the Disease	Alive with Carcinoma	Died of Carcinoma	Died of Other Malignant Tumor	Died of Intercurrent Disease	Cause of Death Unknown	Lost to follow-up
	187 EHIME UNIV.	18	15	0	0	0	0	0	0	3
	188 TOKUSHIMA MUNI. HOSP.	4	4	0	0	0	0	0	0	0
○	189 TEIKYO UNIV.	5	0	1	0	2	0	1	0	1
	190 HIMEJI NATIONAL HOSP.	12	0	1	2	4	0	0	0	5
	191 HAMAMATSU UNIV.	19	17	0	0	2	0	0	0	0
	192 KAGAWA UNIV.	0	0	0	0	0	0	0	0	0
	193 KOUSEIREN TAKAOKA HOSP.	0	0	0	0	0	0	0	0	0
	194 2ND TOKYO NATIONAL HOSP.	18	15	0	0	3	0	0	0	0
	195 TOKYO METRO. FUCHU HOSP.	30	27	0	0	3	0	0	0	0
	196 YAMAGATA UNIV.	29	27	0	0	2	0	0	0	0
○	197 YOKKAICHI MUNI. HOSP.	6	0	3	1	2	0	0	0	0
○	198 UNIV. OF YAMANASHI	26	0	15	2	2	1	1	0	5
	199 FUKUI UNIV.	11	9	0	0	2	0	0	0	0
	200 SASEBO KYOSAI HOSP.	22	0	17	0	3	0	1	1	0
	201 KOSEI CENTRAL HOSP.	6	0	3	1	0	0	0	0	2
	202 SAITAMA MED. CENTER	35	0	15	0	6	0	1	0	13
	203 TOCHIGI CANCER CENTER	23	20	0	0	3	0	0	0	0
	204 NIPPON MED. SCHOOL TAMA NAGAYAMA HOSP.	5	0	3	0	0	0	0	0	2
	205 KYORIN UNIV.	20	20	0	0	0	0	0	0	0
○	206 OSAKA ROUSAI HOSP.	31	0	19	3	1	0	0	2	6
	207 OSAKA CITY GENERAL HOSP.	36	35	0	0	1	0	0	0	0
	208 SIMANE PREF. CENTRAL HOSP.	0	0	0	0	0	0	0	0	0
	209 KURASIKI MED. CENTER	18	18	0	0	0	0	0	0	0
	210 MIDORI MUNI. HOSP.	5	2	0	0	2	0	0	0	1
	211 SAPPORO-KOUSEI GENERAL HOSP.	5	5	0	0	0	0	0	0	0
○	212 TSUKUBA GAKUEN HOSP.	2	0	2	0	0	0	0	0	0
○	213 DOKKYO MED. UNIV.	31	0	22	0	0	0	0	9	0
	214 NHO MATSUMOTO HOSP.	13	12	0	0	1	0	0	0	0
○	215 YAMADA RED CROSS HOSP.	22	0	12	0	6	0	0	0	4
	216 FUKUOKA RED CROSS HOSP.	9	0	2	0	3	0	0	0	4
	217 MUSASHINO RED CROSS HOSP.	13	9	0	0	1	0	0	0	3
	218 HYOGO PREF. AWAJI HOSP.	8	8	0	0	0	0	0	0	0
	219 SHIGA UNIV. OF MED. SCIENCE	28	28	0	0	0	0	0	0	0
○	220 ISEHARA KYODO HOSP.	4	0	2	0	2	0	0	0	0
	221 EHIME PREF. CENTRAL HOSP.	5	3	0	0	2	0	0	0	0
	222 KUSHIRO ROUSAI HOSP.	4	2	0	0	2	0	0	0	0
○	223 TOTTORI PREF. CENTRAL HOSP.	14	0	11	0	2	0	0	0	1
	224 YAMATO TAKADA MUNI. HOSP.	5	5	0	0	0	0	0	0	0
	225 ASHIKAGA RED CROSS HOSP.	13	8	0	0	5	0	0	0	0
○	226 TSUKUBA MED. CENTER	10	0	6	0	1	0	1	0	2
	227 MATSUDO CITY HOSP.	21	0	13	0	1	0	0	0	7
	228 NAGANO MUNI. HOSP.	5	5	0	0	0	0	0	0	0
	229 ST. MARIANNA UNIV. YOKOHAMA CITY SEIBU HOSP.	2	0	1	0	0	0	0	0	1
	230 SAGA PREF. HOSP. KOSEIKAN	9	7	0	0	0	0	0	1	1
○	231 OKINAWA PREF. CHUBU HOSP.	25	0	16	0	3	0	2	0	4
○	232 TOYAMA RED CROSS HOSP.	10	0	8	0	2	0	0	0	0
	233 HIROSHIMA PREF. HOSP.	17	0	8	0	2	0	1	0	6
	234 SHONAN KAMAKURA GENERAL HOSP.	8	7	0	0	1	0	0	0	0
○	235 UNIV. OCCUPATIONAL & ENVIRONMENTAL HEALTH	16	0	12	0	2	0	0	0	2
	236 KOSHIGAYA MUNI. HOSP.	7	6	0	0	1	0	0	0	0
	502 SAN-IKUKAI HOSP.	0	0	0	0	0	0	0	0	0
	503 HACHINOHE MUNI. HOSP.	11	11	0	0	0	0	0	0	0
	504 MIMURO HOSP.	4	2	0	0	0	0	0	0	2

A	B	C	D	E	F	G	H	I	J
Institution	Total No. Treated	no description	Alive with no Evidence of the Disease	Alive with Carcinoma	Died of Carcinoma	Died of Other Malignant Tumor	Died of Intercurrent Disease	Cause of Death Unknown	Lost to follow-up
506 OGAKI MUNI. HOSP.	0	0	0	0	0	0	0	0	0
507 FUJI CITY GENERAL HOSP.	0	0	0	0	0	0	0	0	0
508 SAISEIKAI KYOTO HOSP.	2	1	0	0	1	0	0	0	0
○ 509 JIKEI UNIV. 3RD HOSP.	10	0	8	0	1	0	0	0	1
510 KURE KYOSAI HOSP.	12	8	0	0	2	0	1	0	1
511 YOKOHAMASAKAE KYOSAI HOSP.	6	6	0	0	0	0	0	0	0
○ 512 KOBE MED. CENTER	1	0	0	0	0	0	1	0	0
○ 513 KANTO ROSAI HOSP.	4	0	3	0	0	0	0	1	0
515 TOKAI UNIV.	14	0	6	0	1	0	0	0	7
○ 516 ASAHI CENTRAL HOSP.	15	0	8	0	2	0	0	3	2
○ 517 YOKOHAMA MUNI. HOSP.	2	0	1	0	1	0	0	0	0
518 YOKOHAMA MINAMI KYOSAI HOSP.	7	0	3	0	1	0	1	0	2
519 KYOTO KATURA HOSP.	6	6	0	0	0	0	0	0	0
520 JIKEI UNIV. KASHIWA HOSP.	29	0	8	3	6	0	0	1	11
522 HAMAMATSU MED. CENTER	10	10	0	0	0	0	0	0	0
523 JUNTENDO UNIV. URAYASU HOSP.	0	0	0	0	0	0	0	0	0
524 KAMEDA MED. CENTER	0	0	0	0	0	0	0	0	0
○ 526 JIKEI UNIV. AOTO HOSP.	21	0	9	1	7	0	0	0	4
Total	4,411	1,035	1,925	67	687	14	42	56	585

Table 1. No. of Patients by Stage and Age

Age		~19		20~29		30~39		40~49		50~59		60~69		70~79		80~		Total	
		No.	%	No.	%	No.	%	No.	%	No.	%	No.	%	No.	%	No.	%	No.	%
I	a1	1	0.0	72	1.6	299	6.8	189	4.3	111	2.5	61	1.4	27	0.6	2	0.0	762	17.3
	a2	0	0.0	5	0.1	20	0.5	21	0.5	13	0.3	5	0.1	5	0.1	0	0.0	69	1.6
	a not cl.	0	0.0	3	0.1	26	0.6	18	0.4	7	0.2	11	0.2	6	0.1	2	0.0	73	1.7
	b1	0	0.0	40	0.9	272	6.2	269	6.1	265	6.0	136	3.1	80	1.8	19	0.4	1,081	24.5
	b2	1	0.0	11	0.2	70	1.6	79	1.8	62	1.4	27	0.6	7	0.2	3	0.1	260	5.9
	b not cl.	0	0.0	5	0.1	21	0.5	29	0.7	28	0.6	18	0.4	9	0.2	3	0.1	113	2.6
	not cl.	0	0.0	0	0.0	1	0.0	1	0.0	0	0.0	1	0.0	0	0.0	1	0.0	4	0.1
total	2	0.0	136	3.1	709	16.1	606	13.7	486	11.0	259	5.9	134	3.0	30	0.7	2,362	53.5	
II	a	0	0.0	5	0.1	40	0.9	44	1.0	54	1.2	56	1.3	52	1.2	15	0.3	266	6.0
	b	1	0.0	11	0.2	97	2.2	137	3.1	220	5.0	146	3.3	120	2.7	44	1.0	776	17.6
	not cl.	0	0.0	0	0.0	1	0.0	0	0.0	0	0.0	0	0.0	0	0.0	0	0.0	1	0.0
total	1	0.0	16	0.4	138	3.1	181	4.1	274	6.2	202	4.6	172	3.9	59	1.3	1,043	23.6	
III	a	0	0.0	0	0.0	0	0.0	8	0.2	6	0.1	13	0.3	20	0.5	10	0.2	57	1.3
	b	0	0.0	1	0.0	44	1.0	97	2.2	154	3.5	111	2.5	140	3.2	75	1.7	622	14.1
	not cl.	0	0.0	0	0.0	0	0.0	0	0.0	1	0.0	0	0.0	2	0.0	1	0.0	4	0.1
total	0	0.0	1	0.0	44	1.0	105	2.4	161	3.6	124	2.8	162	3.7	86	1.9	683	15.5	
IV	a	0	0.0	1	0.0	7	0.2	20	0.5	28	0.6	37	0.8	39	0.9	24	0.5	156	3.5
	b	0	0.0	2	0.0	6	0.1	34	0.8	52	1.2	38	0.9	18	0.4	16	0.4	166	3.8
	not cl.	0	0.0	0	0.0	0	0.0	0	0.0	0	0.0	0	0.0	1	0.0	0	0.0	1	0.0
total	0	0.0	3	0.1	13	0.3	54	1.2	80	1.8	75	1.7	58	1.3	40	0.9	323	7.3	
Total	3	0.1	156	3.5	904	20.5	946	21.4	1,001	22.7	660	15.0	526	11.9	215	4.9	4,411		

Table 2. Type of Treatment

Treatment		Surgery								Radiation				Chem.Immun. Hormon		Others		Total	
		alone		Rad.		Rad. Chem. Immun.Hormon		Chem.Immun. Hormon		alone		Chem.Immun. Hormon		Hormon		Others		Total	
		No.	%	No.	%	No.	%	No.	%	No.	%	No.	%	No.	%	No.	%	No.	%
I	a1	735	16.7	13	0.3	1	0.0	0	0.0	1	0.0	0	0.0	6	0.1	6	0.1	762	17.3
	a2	62	1.4	6	0.1	0	0.0	0	0.0	0	0.0	0	0.0	0	0.0	1	0.0	69	1.6
	a not cl.	67	1.5	4	0.1	0	0.0	0	0.0	0	0.0	0	0.0	1	0.0	1	0.0	73	1.7
	b1	653	14.8	389	8.8	22	0.5	0	0.0	7	0.2	1	0.0	0	0.0	9	0.2	1,081	24.5
	b2	56	1.3	195	4.4	8	0.2	0	0.0	1	0.0	0	0.0	0	0.0	0	0.0	260	5.9
	b not cl.	39	0.9	72	1.6	0	0.0	0	0.0	2	0.0	0	0.0	0	0.0	0	0.0	113	2.6
not cl.	3	0.1	0	0.0	0	0.0	0	0.0	1	0.0	0	0.0	0	0.0	0	0.0	4	0.1	
II	a	51	1.2	192	4.4	13	0.3	1	0.0	9	0.2	0	0.0	0	0.0	0	0.0	266	6.0
	b	49	1.1	644	14.6	39	0.9	0	0.0	44	1.0	0	0.0	0	0.0	0	0.0	776	17.6
	not cl.	0	0.0	1	0.0	0	0.0	0	0.0	0	0.0	0	0.0	0	0.0	0	0.0	1	0.0
III	a	4	0.1	40	0.9	3	0.1	0	0.0	10	0.2	0	0.0	0	0.0	0	0.0	57	1.3
	b	2	0.0	475	10.8	31	0.7	0	0.0	107	2.4	4	0.1	2	0.0	1	0.0	622	14.1
	not cl.	0	0.0	1	0.0	0	0.0	1	0.0	2	0.0	0	0.0	0	0.0	0	0.0	4	0.1
IV	a	1	0.0	86	1.9	8	0.2	0	0.0	58	1.3	1	0.0	2	0.0	0	0.0	156	3.5
	b	2	0.0	88	2.0	6	0.1	0	0.0	64	1.5	3	0.1	3	0.1	0	0.0	166	3.8
	not cl.	0	0.0	1	0.0	0	0.0	0	0.0	0	0.0	0	0.0	0	0.0	0	0.0	1	0.0
Total	1,724	39.1	2,207	50.0	131	3.0	2	0.0	306	6.9	9	0.2	14	0.3	18	0.4	4,411		

**Table 3. 5-Year Result, Treatment Started in 2001**

5-year result	No. of patients	%
Alive with no Evidence of the Disease	1,861	62.0
Alive with Carcinoma	78	2.6
Died of Carcinoma	549	18.3
Died of Other Malignant Tumor	8	0.3
Died of Intercurrent Disease	36	1.2
Cause of Death Unknown	42	1.4
Lost Sight of or Untraced	428	14.3
Total	3,002	

**Table 4. 5-Year Survival by Stage, Treatment Started in 2001**

Stage		Patients treated			5-year survival		
		No.	No.	No.	%	%	%
I	a1	523	618	1,610	99.0	98.8	93.8
	a2	50			100.0		
	a not cl.	45	-				
	b1	748	981		91.7	90.7	
	b2	162			86.3		
	b not cl.	71	-				
	not cl.	11	-				
II	a	178	714	715	73.3	72.0	72.1
	b	536			71.6		
	not cl.	1	-				
III	a	36	456	458	56.2	48.4	48.6
	b	420			47.8		
	not cl.	2	-				
IV	a	104	219	219	35.0	27.2	27.2
	b	115			19.8		
	not cl.	0	-				
Total		3,002			77.4		

**Table 5. 5-Year Survival by Histological Type, Treatment Started in 2001**

Histological type	Patients treated		5-year survival	
	No.	%	%	
squamous carcinoma	2,339	78.2	78.7	
adenocarcinoma	455	15.2	72.9	
adenosquamous carcinoma	124	4.1	83.9	
others	73	2.4	54.2	

**Table 6. 5-Year Survival by Stage and Histological Type, Treatment Started in 2001**

Stage	Histology type	Patients treated		5-year survival
		No.	%	%
I	squamous carcinoma	1,201	74.9	95.0
	adenocarcinoma	293	18.2	89.6
	adenosquamous carcinoma	73	4.6	93.7
	others	37	2.3	85.6
II	squamous carcinoma	568	79.7	75.8
	adenocarcinoma	99	13.9	54.5
	adenosquamous carcinoma	35	4.9	74.2
	others	11	1.5	30.0
III	squamous carcinoma	397	87.1	51.1
	adenocarcinoma	34	7.5	23.5
	adenosquamous carcinoma	12	2.6	66.7
	others	13	2.9	18.5
IV	squamous carcinoma	173	79.4	28.6
	adenocarcinoma	29	13.3	21.5
	adenosquamous carcinoma	4	1.8	50.0
	others	12	5.5	16.7

**Table 7. 5-Year Survival First Therapy, Treatment Started in 2001**

Stage	Therapy	Patients treated		5-year survival
		No.	%	%
I	Surgery	854	87.1	91.5
	Radiation	72	7.3	82.3
	(Radiation alone)	(57)	-	(83.4)
	Chemotherapy	55	5.6	87.3
	others	0	0.0	-
II	Surgery	327	45.7	77.9
	Radiation	227	31.7	69.6
	(Radiation alone)	(158)	-	(65.7)
	Chemotherapy	160	22.4	63.9
	others	1	0.1	0.0
III	Surgery	19	4.1	50.2
	Radiation	336	73.4	49.7
	(Radiation alone)	(202)	-	(49.0)
	Chemotherapy	101	22.1	44.4
	others	2	0.4	100.0
IV	Surgery	11	5.0	27.3
	Radiation	158	72.1	30.0
	(Radiation alone)	(89)	-	(20.1)
	Chemotherapy	47	21.5	20.3
	others	3	1.4	27.2

**Table 8. 5-Year Survival by TNM Classification, Treatment Started in 2001**

TNM Stage			Patients treated		5-year survival
			No.	%	%
T1a1	N0	M0	444	16.1	99.1
T1a2	N0	M0	48	1.7	100.0
T1b1	N0	M0	694	25.1	93.1
T1b2	N0	M0	136	4.9	89.2
T2a	N0	M0	154	5.6	78.6
T2b	N0	M0	403	14.6	74.2
T3a	N0	M0	29	1.1	59.6
T3b	N0	M0	270	9.8	54.1
T4	N0	M0	68	2.5	46.5
T1a1	N1	M0	1	0.0	100.0
T1a2	N1	M0	1	0.0	100.0
T1b1	N1	M0	45	1.6	70.2
T1b2	N1	M0	20	0.7	62.7
T2a	N1	M0	21	0.8	41.9
T2b	N1	M0	120	4.3	63.2
T3a	N1	M0	5	0.2	40.0
T3b	N1	M0	136	4.9	37.1
T4	N1	M0	29	1.1	18.7
Any T	AnyN	M1	136	4.9	25.6

Figure 1.

Kaplan-Meier Estimated Overall Survival Curves of Cervical Cancer Patients by FIGO Stage, Treatment Started in 2001

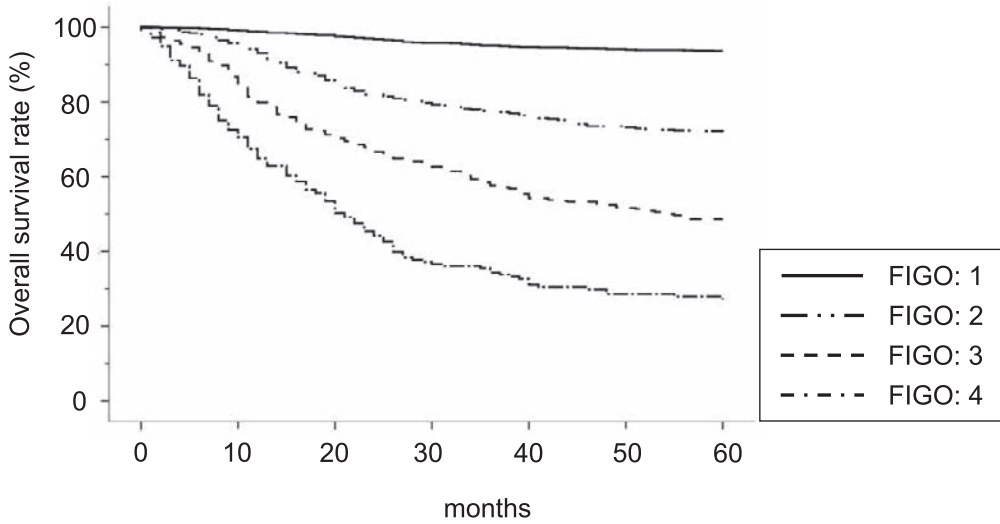


Figure 2.

Kaplan-Meier Estimated Overall Survival Curves of Cervical Cancer Patients by Histological type, Treatment Started in 2001

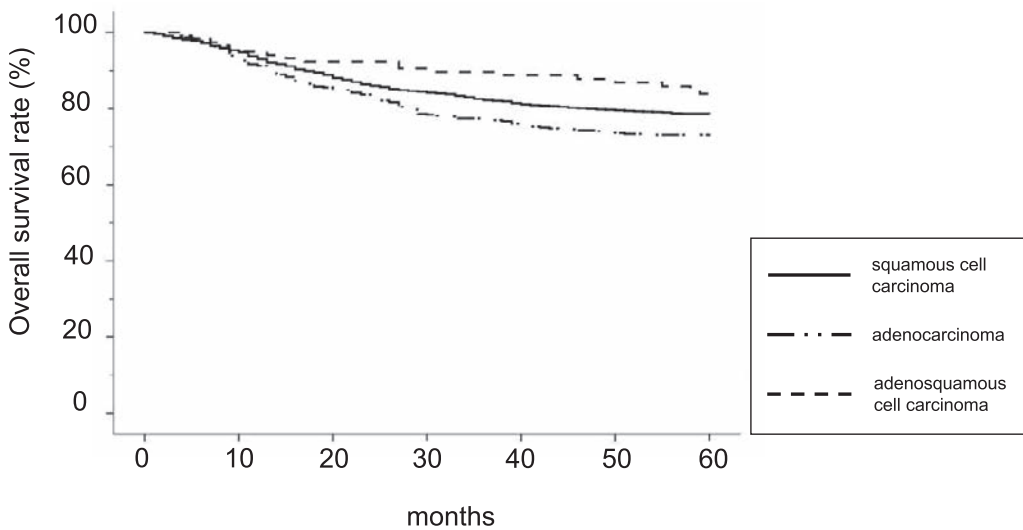


Figure 3.

Kaplan-Meier Estimated Overall Survival Curves of Cervical Cancer Patients by FIGO 1 Substage, Treatment Started in 2001

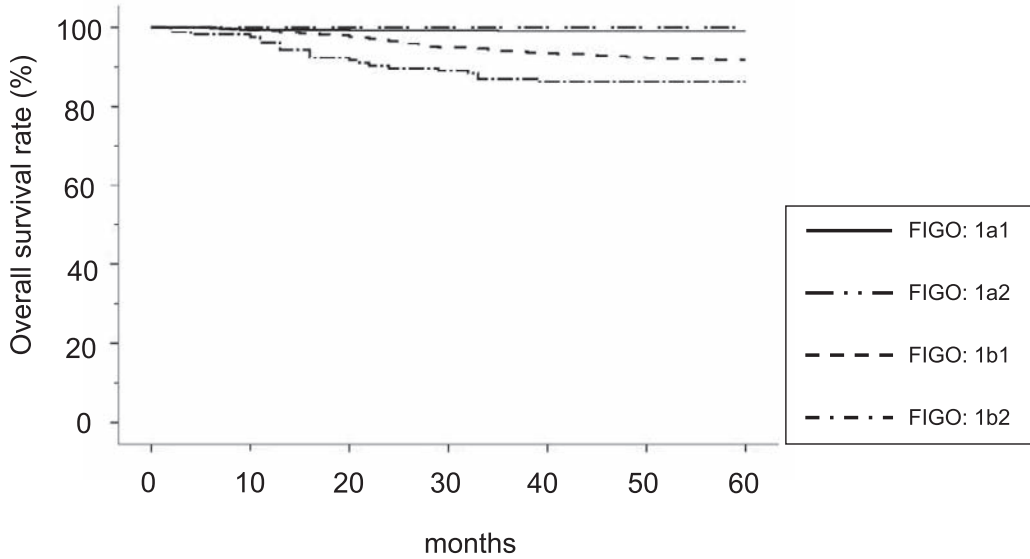


Figure 4.

Kaplan-Meier Estimated Overall Survival Curves of Stage 1 Cervical Cancer Patients by Histological type, Treatment Started in 2001

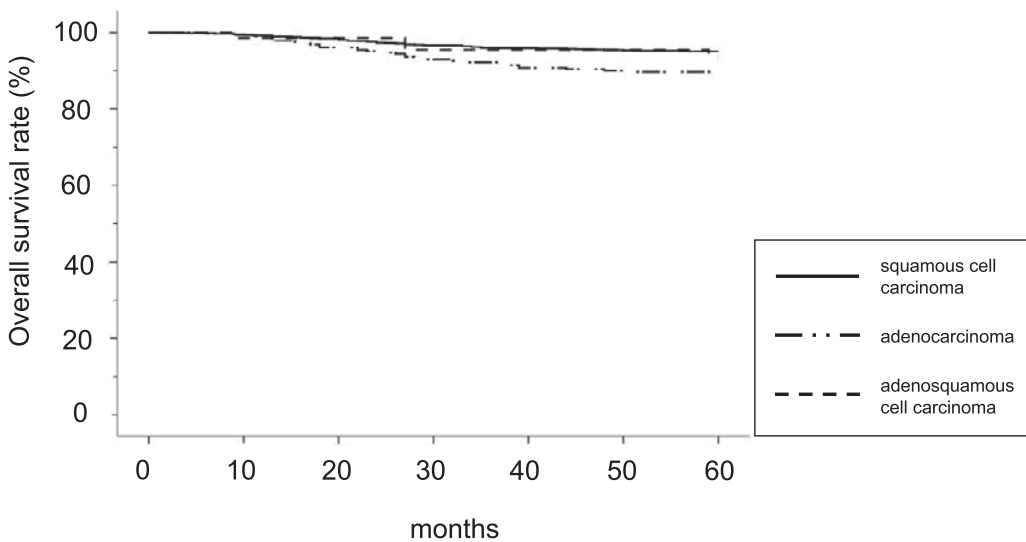


Figure 5.

Kaplan-Meier Estimated Overall Survival Curves of Cervical Cancer Patients by FIGO 2 Substage, Treatment Started in 2001

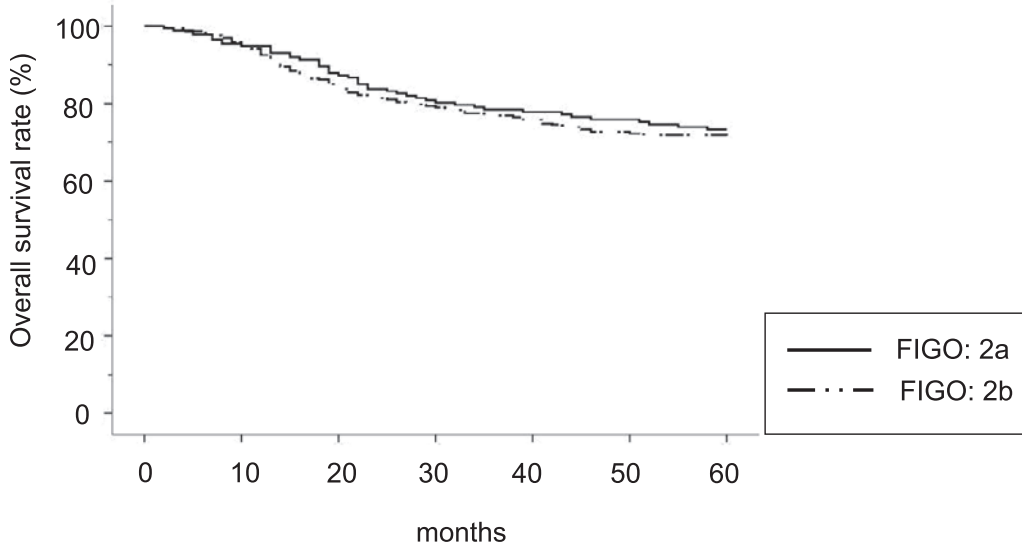


Figure 6.

Kaplan-Meier Estimated Overall Survival Curves of FIGO 2 Cervical Cancer Patients by Histological type, Treatment Started in 2001

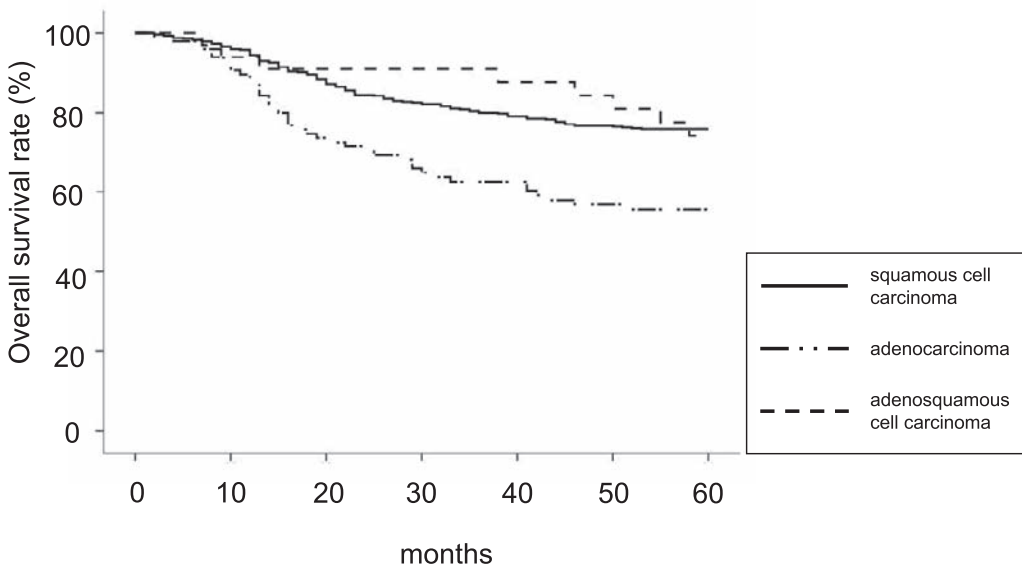


Figure 7.

Kaplan-Meier Estimated Overall Survival Curves of Cervical Cancer Patients by FIGO 3 Substage, Treatment Started in 2001

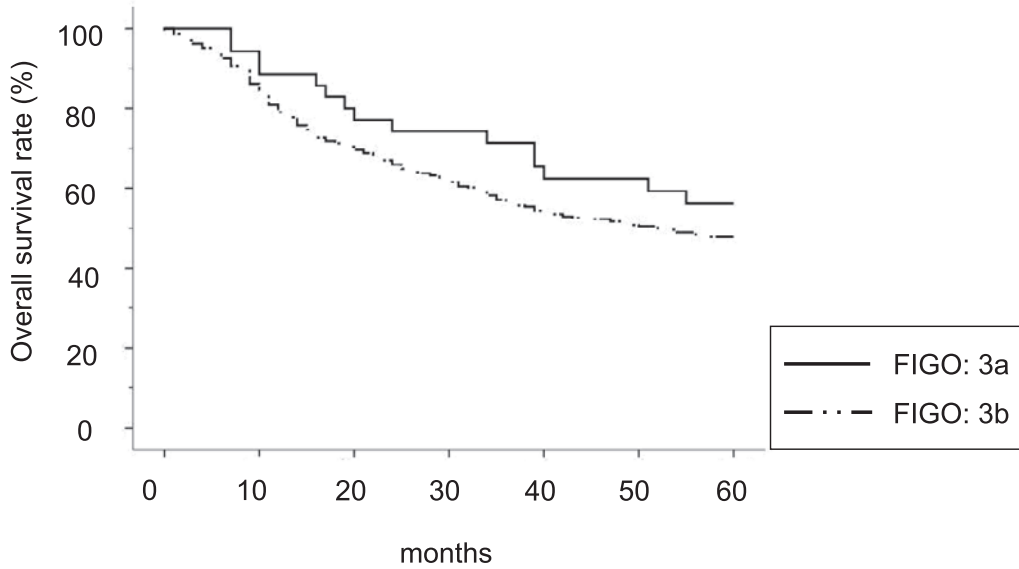


Figure 8.

Kaplan-Meier Estimated Overall Survival Curves of FIGO 3 Cervical Cancer Patients by Histological type, Treatment Started in 2001

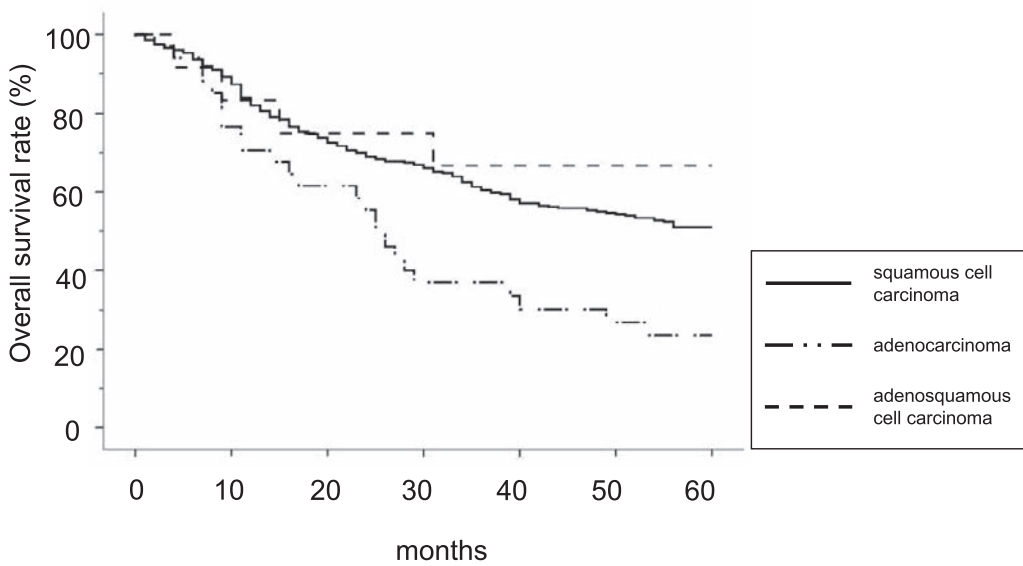


Figure 9.

Kaplan-Meier Estimated Overall Survival Curves of Cervical Cancer Patients by FIGO 4 Substage, Treatment Started in 2001

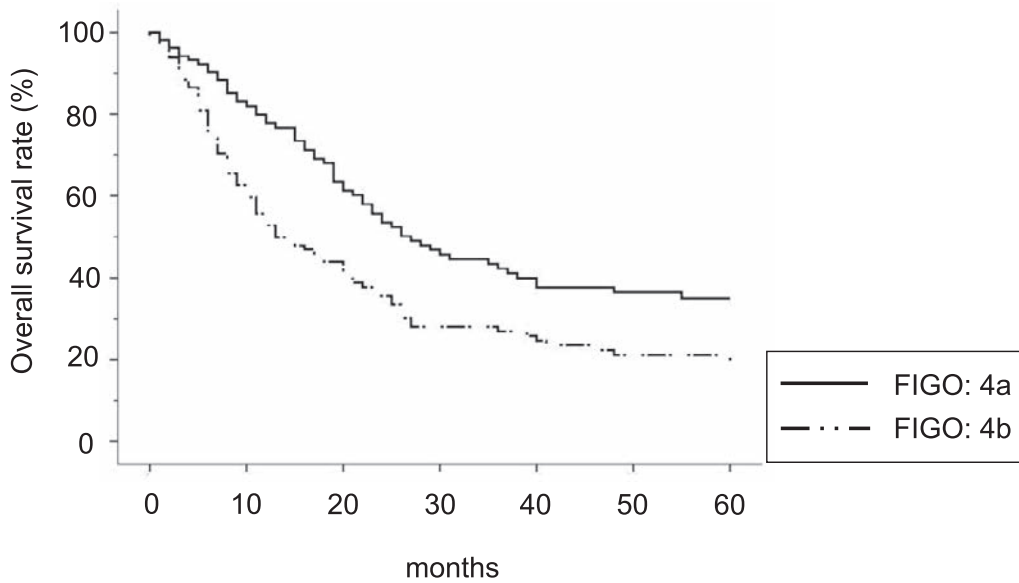
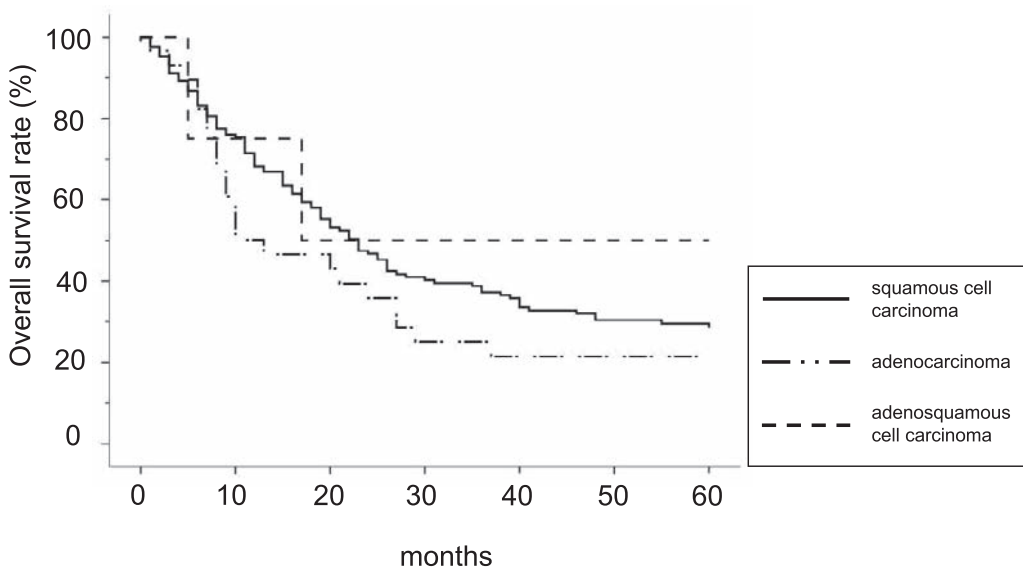


Figure 10.

Kaplan-Meier Estimated Overall Survival Curves of FIGO 4 Cervical Cancer Patients by Histological type, Treatment Started in 2001





	A	B	C	D	E	F	G	H	I	J
	Institution	Total No. Treated	no description	Alive with no Evidence of the Disease	Alive with Carcinoma	Died of Carcinoma	Died of Other Malignant Tumor	Died of Intercurrent Disease	Cause of Death Unknown	Lost to follow-up
○	63 TOTTORI UNIV.	7	0	4	0	2	0	0	0	1
	64 MORIOKA RED CROSS HOSP.	0	0	0	0	0	0	0	0	0
	65 MATSUYAMA RED CROSS HOSP.	0	0	0	0	0	0	0	0	0
	67 HIROSHIMA UNIV.	17	13	0	0	0	0	0	1	3
○	68 YAMAGUCHI UNIV.	9	0	7	0	0	0	1	0	1
○	69 TOYOOKA PUBLIC HOSP.	6	0	5	0	1	0	0	0	0
	70 GUNMA UNIV.	16	14	0	0	0	0	0	0	2
	71 TOKYO POLICE HOSP.	0	0	0	0	0	0	0	0	0
	73 OSAKA KITANO HOSP.	0	0	0	0	0	0	0	0	0
	77 CHIBA UNIV.	21	0	13	2	0	0	0	0	6
○	79 KANSAI MED. UNIV.	19	0	10	1	4	0	1	0	3
	80 KAWASAKI HOSP.(OKAYAMA)	4	0	2	0	1	0	0	0	1
	81 TOUMA HOSP. (SAITAMA)	0	0	0	0	0	0	0	0	0
○	82 YAMAGUCHI RED CROSS HOSP.	12	0	9	0	3	0	0	0	0
	83 SASEBO MUNI. HOSP.	0	0	0	0	0	0	0	0	0
	84 NIPPON MED. SCHOOL 2ND HOSP.	3	3	0	0	0	0	0	0	0
	85 NAGOYA NATIONAL HOSP.	16	7	0	0	0	0	0	0	9
	86 KOSEI HOSP.	0	0	0	0	0	0	0	0	0
	87 HITACHI GENERAL HOSP.	0	0	0	0	0	0	0	0	0
	88 OSAKA RED CROSS HOSP.	7	7	0	0	0	0	0	0	0
	89 NIHON UNIV.	24	0	13	0	4	0	0	0	7
○	90 NAGOYA I RED CROSS HOSP.	16	0	12	1	1	0	0	0	2
	92 INTERNATIONAL MED. CENTER HOSP.	13	13	0	0	0	0	0	0	0
○	94 KUMAMOTO NATIONAL HOSP.	31	0	24	0	6	0	0	0	1
	95 NARA MED. UNIV.	9	9	0	0	0	0	0	0	0
	96 OSAKA MED. COLL.	23	0	13	0	4	0	0	1	5
	97 KYUSHU UNIV. SEIKEN	7	4	0	0	2	0	0	0	1
	99 OKAYAMA NATIONAL HOSP.	0	0	0	0	0	0	0	0	0
	100 YAMANASHI PREF. CENTRAL HOSP.	24	23	0	0	0	0	0	0	1
○	101 NATIONAL CANCER CENTER	72	0	59	3	8	0	0	2	0
○	102 SHIZUOKA PREF. HOSP.	24	0	21	0	2	0	0	0	1
○	103 OSAKA MED. CENTER	36	0	29	1	5	0	1	0	0
○	105 OKAYAMA SAISEIKAI GENERAL HOSP.	5	0	4	0	1	0	0	0	0
	106 KOKURA NATIONAL HOSP.	0	0	0	0	0	0	0	0	0
	107 SHIMADA MUNI. HOSP.	4	4	0	0	0	0	0	0	0
	109 FUKUI RED CROSS HOSP.	4	0	3	0	0	0	0	0	1
	110 OSAKA POLICE HOSP.	5	0	3	0	0	0	0	0	2
○	111 HYOGO CANCER CENTER	29	0	18	1	5	0	0	1	4
	112 OHTSU RED CROSS HOSP.	13	0	8	0	1	0	0	0	4
	114 FUKUOKA NATIONAL HOSP.	19	0	12	1	1	0	0	0	5
○	116 AICHI CANCER CENTER	46	0	33	1	7	0	0	0	5
○	117 KANAGAWA CANCER CENTER	49	0	38	0	10	1	0	0	0
○	118 OITA PREF. HOSP.	19	0	11	0	6	0	0	0	2
	119 TOYAMA PREF. CENTRAL HOSP.	18	13	0	0	4	0	0	0	1
	120 TOKUSHIMA UNIV.	6	5	0	0	1	0	0	0	0
○	121 SHOWA UNIV.	13	0	10	0	3	0	0	0	0
	122 NIIGATA CANCER CENTER	34	0	22	0	3	0	0	1	8
○	123 HIROSHIMA MUNI. HOSP.	21	0	15	1	0	0	1	0	4
	124 KYOTO 1ST RED CROSS HOSP.	0	0	0	0	0	0	0	0	0
○	125 YAMAGATA PREF. CENTRAL HOSP.	7	0	6	0	0	0	0	0	1
○	126 WAKAYAMA MED. UNIV.	13	0	12	0	0	0	0	0	1
	127 TAKAMATSU RED CROSS HOSP.	13	0	9	0	1	0	0	0	3
○	128 KAGAWA PREF. CENTRAL HOSP.	13	0	8	0	4	0	0	0	1

	A	B	C	D	E	F	G	H	I	J
	Institution	Total No. Treated	no description	Alive with no Evidence of the Disease	Alive with Carcinoma	Died of Carcinoma	Died of Other Malignant Tumor	Died of Intercurrent Disease	Cause of Death Unknown	Lost to follow-up
○	129 KAGOSHIMA MUNI. HOSP.	26	24	0	0	2	0	0	0	0
○	130 FUKUYAMA NATIONAL HOSP.	13	0	8	3	2	0	0	0	0
○	131 TOKYO MED. UNIV.	19	17	0	0	2	0	0	0	0
○	132 SHIKOKU CANCER CENTER	34	0	25	2	2	0	1	0	4
○	133 KAWASAKI MUNI. HOSP.	8	0	8	0	0	0	0	0	0
○	134 TOHO UNIV.	0	0	0	0	0	0	0	0	0
○	136 ONOMICHI HOSP.	13	0	10	1	1	1	0	0	0
○	137 KUMAMOTO MUNI. HOSP.	0	0	0	0	0	0	0	0	0
○	139 KYOUNDO HOSP.	15	0	10	0	0	0	0	0	5
○	140 KYUSHU KOSEINENKIN HOSP.	16	12	0	0	2	0	0	0	2
○	141 KURE NATIONAL HOSP.	20	0	18	0	1	0	0	0	1
○	143 GUNMA PREF. CANCER CENTER	26	0	22	1	3	0	0	0	0
○	144 TOKUSHIMA PREF. CENTRAL HOSP.	5	0	2	0	0	1	0	0	2
○	145 FUKUOKA UNIV.	22	0	19	0	0	0	0	0	3
○	146 TENRI HOSP.	12	0	9	0	1	0	0	0	2
○	147 KASUMIGAURA NATIONAL HOSP.	9	0	5	1	3	0	0	0	0
○	148 CHIBA PREF. CANCER CENTER	20	0	13	0	1	0	0	0	6
○	149 KYUSHU CANCER CENTER	42	0	35	0	5	0	0	0	2
○	150 NAGANO RED CROSS HOSP.	24	0	17	0	6	0	1	0	0
○	151 CHIBA MUNI. HOSP.	0	0	0	0	0	0	0	0	0
○	152 KANAZAWA MED. UNIV.	4	0	4	0	0	0	0	0	0
○	153 NATIONAL INS. OF RADIOLOGICAL SCIENCES	1	0	0	1	0	0	0	0	0
○	154 RYUKYU UNIV.	31	0	29	0	1	0	0	0	1
○	155 KOCHI MUNI. HOSP.	7	0	3	0	1	0	0	0	3
○	156 FUKUI PREF. HOSP.	0	0	0	0	0	0	0	0	0
○	157 SAITAMA CANCER CENTER	63	0	53	1	7	0	0	2	0
○	158 KINKI UNIV.	18	17	0	0	0	0	0	0	1
○	159 NAGASAKI ATOMIC BOMB HOSP.	16	0	13	0	3	0	0	0	0
○	160 HIMEJI RED CROSS HOSP.	23	21	0	0	1	0	1	0	0
○	161 TOKYO METRO. KOMAGOME HOSP.	36	0	29	1	5	0	1	0	0
○	163 JICHI MED. UNIV.	23	0	16	0	2	0	0	0	5
○	164 MURORAN MUNI. HOSP.	4	3	0	0	1	0	0	0	0
○	166 TOCHIGI NATIONAL HOSP.	13	0	10	0	3	0	0	0	0
○	167 ST. MARIANNA UNIV.	22	0	11	3	2	0	2	0	4
○	168 KITAZATO UNIV.	54	0	37	1	9	0	0	0	7
○	169 AKITA UNIV.	0	0	0	0	0	0	0	0	0
○	170 KANSAI ROSAI HOSP.	14	0	9	0	4	0	0	0	1
○	171 KYOTO MUNI. HOSP.	5	3	0	0	1	0	1	0	0
○	172 MITO NATIONAL HOSP.	24	21	0	0	2	0	1	0	0
○	173 ASAHIKAWA MED. COLL.	7	0	5	0	0	0	0	0	2
○	174 WAKAYAMA ROSAI HOSP.	0	0	0	0	0	0	0	0	0
○	175 SHIMANE UNIV.	13	11	0	0	1	0	0	0	1
○	176 KAWASAKI MED. SCHOOL	19	18	0	0	0	0	0	0	1
○	177 SAITAMA NATIONAL HOSP.	10	0	7	0	0	0	0	1	2
○	178 TOYAMA UNIV.	7	7	0	0	0	0	0	0	0
○	179 TSUKUBA UNIV.	25	0	17	1	2	0	0	1	4
○	180 HYOGO MED. COLL.	9	9	0	0	0	0	0	0	0
○	181 AICHI MED. UNIV.	10	0	7	0	3	0	0	0	0
○	182 NATIONAL DEFENSE MED. COLL.	19	17	0	0	2	0	0	0	0
○	183 KOCHI UNIV.	6	0	5	0	0	0	0	0	1
○	184 KYOTO 2ND RED CROSS HOSP.	12	0	10	1	1	0	0	0	0
○	185 SAGA UNIV.	12	0	7	0	3	0	0	0	2
○	186 NAGAOKA RED CROSS HOSP.	17	15	0	0	1	0	0	0	1

	A	B	C	D	E	F	G	H	I	J
	Institution	Total No. Treated	no description	Alive with no Evidence of the Disease	Alive with Carcinoma	Died of Carcinoma	Died of Other Malignant Tumor	Died of Intercurrent Disease	Cause of Death Unknown	Lost to follow-up
	187 EHIME UNIV.	11	4	0	0	2	0	0	0	5
	188 TOKUSHIMA MUNI. HOSP.	9	9	0	0	0	0	0	0	0
○	189 TEIKYO UNIV.	10	0	6	1	1	0	0	0	2
	190 HIMEJI NATIONAL HOSP.	6	0	1	0	1	0	0	0	4
	191 HAMAMATSU UNIV.	14	11	0	0	3	0	0	0	0
	192 KAGAWA UNIV.	0	0	0	0	0	0	0	0	0
	193 KOUSEIREN TAKAOKA HOSP.	0	0	0	0	0	0	0	0	0
	194 2ND TOKYO NATIONAL HOSP.	19	19	0	0	0	0	0	0	0
	195 TOKYO METRO. FUCHU HOSP.	27	26	0	0	1	0	0	0	0
	196 YAMAGATA UNIV.	15	15	0	0	0	0	0	0	0
	197 YOKKAICHI MUNI. HOSP.	9	0	3	0	0	0	0	0	6
○	198 UNIV. OF YAMANASHI	17	0	11	0	4	0	0	0	2
	199 FUKUI UNIV.	4	4	0	0	0	0	0	0	0
○	200 SASEBO KYOSAI HOSP.	14	0	9	0	5	0	0	0	0
○	201 KOSEI CENTRAL HOSP.	1	0	0	1	0	0	0	0	0
○	202 SAITAMA MED. CENTER	35	0	21	1	7	0	0	0	6
	203 TOCHIGI CANCER CENTER	12	10	0	0	1	0	0	0	1
○	204 NIPPON MED. SCHOOL TAMA NAGAYAMA HOSP.	7	0	7	0	0	0	0	0	0
	205 KYORIN UNIV.	21	19	0	0	2	0	0	0	0
○	206 OSAKA ROUSAI HOSP.	29	0	21	1	2	0	0	0	5
	207 OSAKA CITY GENERAL HOSP.	18	16	0	0	2	0	0	0	0
	208 SIMANE PREF. CENTRAL HOSP.	0	0	0	0	0	0	0	0	0
	209 KURASIKI MED. CENTER	16	16	0	0	0	0	0	0	0
	210 MIDORI MUNI. HOSP.	6	6	0	0	0	0	0	0	0
	211 SAPPORO-KOUSEI GENERAL HOSP.	9	7	0	0	2	0	0	0	0
○	212 TSUKUBA GAKUEN HOSP.	6	0	4	0	2	0	0	0	0
○	213 DOKKYO MED. UNIV.	20	0	13	1	3	0	0	0	3
	214 NHO MATSUMOTO HOSP.	7	6	0	0	1	0	0	0	0
○	215 YAMADA RED CROSS HOSP.	17	0	12	1	3	0	0	0	1
○	216 FUKUOKA RED CROSS HOSP.	8	0	3	0	4	0	0	0	1
	217 MUSASHINO RED CROSS HOSP.	15	9	0	0	0	0	0	0	6
	218 HYOGO PREF. AWAJI HOSP.	3	3	0	0	0	0	0	0	0
	219 SHIGA UNIV. OF MED. SCIENCE	12	12	0	0	0	0	0	0	0
○	220 ISEHARA KYODO HOSP.	1	0	0	0	1	0	0	0	0
	221 EHIME PREF. CENTRAL HOSP.	9	6	0	0	0	0	0	0	3
	222 KUSHIRO ROUSAI HOSP.	7	6	0	0	0	0	0	1	0
○	223 TOTTORI PREF. CENTRAL HOSP.	7	0	5	0	0	1	0	0	1
	224 YAMATO TAKADA MUNI. HOSP.	7	6	0	0	1	0	0	0	0
	225 ASHIKAGA RED CROSS HOSP.	7	5	0	0	1	0	0	0	1
○	226 TSUKUBA MED. CENTER	8	0	5	0	3	0	0	0	0
○	227 MATSUDO CITY HOSP.	16	0	11	1	2	0	0	0	2
	228 NAGANO MUNI. HOSP.	8	8	0	0	0	0	0	0	0
○	229 ST. MARIANNA UNIV. YOKOHAMA CITY SEIBU HOSP.	8	0	7	0	1	0	0	0	0
	230 SAGA PREF. HOSP. KOSEIKAN	8	6	0	0	2	0	0	0	0
○	231 OKINAWA PREF. CHUBU HOSP.	10	0	6	0	1	1	0	0	2
○	232 TOYAMA RED CROSS HOSP.	1	0	0	1	0	0	0	0	0
○	233 HIROSHIMA PREF. HOSP.	16	0	10	0	3	0	1	0	2
	234 SHONAN KAMAKURA GENERAL HOSP.	7	7	0	0	0	0	0	0	0
○	235 UNIV. OCCUPATIONAL & ENVIRONMENTAL HEALTH	16	0	12	1	3	0	0	0	0
	236 KOSHIGAYA MUNI. HOSP.	20	16	0	0	4	0	0	0	0
	502 SAN-IKUKAI HOSP.	0	0	0	0	0	0	0	0	0
	503 HACHINOHE MUNI. HOSP.	9	9	0	0	0	0	0	0	0
	504 MIMURO HOSP.	7	5	0	0	0	0	0	1	1

A	B	C	D	E	F	G	H	I	J	
Institution	Total No. Treated	no description	Alive with no Evidence of the Disease	Alive with Carcinoma	Died of Carcinoma	Died of Other Malignant Tumor	Died of Intercurrent Disease	Cause of Death Unknown	Lost to follow-up	
506	OGAKI MUNI. HOSP.	0	0	0	0	0	0	0	0	
507	FUJI CITY GENERAL HOSP.	0	0	0	0	0	0	0	0	
508	SAISEIKAI KYOTO HOSP.	7	7	0	0	0	0	0	0	
○	509	JIKEI UNIV. 3RD HOSP.	13	0	8	0	3	0	0	2
	510	KURE KYOSAI HOSP.	7	6	0	0	1	0	0	0
	511	YOKOHAMASAKAE KYOSAI HOSP.	9	8	0	0	1	0	0	0
	512	KOBE MED. CENTER	3	2	0	0	1	0	0	0
	513	KANTO ROSAI HOSP.	7	0	3	0	0	0	2	2
	515	TOKAI UNIV.	16	0	9	0	2	0	1	4
	516	ASAHI CENTRAL HOSP.	15	0	6	0	5	0	0	4
○	517	YOKOHAMA MUNI. HOSP.	10	0	5	2	1	0	1	1
○	518	YOKOHAMA MINAMI KYOSAI HOSP.	12	0	9	0	1	1	0	1
	519	KYOTO KATURA HOSP.	4	3	0	0	1	0	0	0
○	520	JIKEI UNIV. KASHIWA HOSP.	46	0	32	2	6	0	0	6
	522	HAMAMATSU MED. CENTER	8	8	0	0	0	0	0	0
	523	JUNTENDO UNIV. URAYASU HOSP.	0	0	0	0	0	0	0	0
	524	KAMEDA MED. CENTER	0	0	0	0	0	0	0	0
	525	YAMATO CITY HOSP.	4	0	3	0	0	0	0	1
	526	JIKEI UNIV. AOTO HOSP.	15	0	5	0	3	0	0	7
	Total	3,249	813	1,634	52	345	8	26	24	347

Table 1. No. of Patients by Stage and Age

Stage		Age		~19		20~29		30~39		40~49		50~59		60~69		70~79		80~		Total	
		No.	%	No.	%	No.	%	No.	%	No.	%	No.	%	No.	%	No.	%	No.	%	No.	%
I	a		0.0	12	0.4	55	1.7	134	4.1	246	7.6	98	3.0	39	1.2	14	0.4	598	18.4		
	b	1	0.0	12	0.4	43	1.3	152	4.7	500	15.4	264	8.1	128	3.9	19	0.6	1,119	34.4		
	c		0.0	3	0.1	8	0.2	17	0.5	99	3.0	142	4.4	95	2.9	13	0.4	377	11.6		
	not cl.		0.0		0.0	1	0.0	2	0.1	1	0.0	4	0.1	2	0.1		0.0	10	0.3		
	total	1	0.0	27	0.8	107	3.3	305	9.4	846	26.0	508	15.6	264	8.1	46	1.4	2,104	64.8		
II	a		0.0	2	0.1	7	0.2	20	0.6	28	0.9	18	0.6	11	0.3	2	0.1	88	2.7		
	b		0.0	2	0.1	5	0.2	30	0.9	68	2.1	22	0.7	16	0.5	7	0.2	150	4.6		
	c		0.0	1	0.0		0.0	1	0.0	3	0.1	5	0.2	2	0.1	2	0.1	14	0.4		
	not cl.		0.0		0.0		0.0		0.0												
	total	0	0.0	5	0.2	12	0.4	51	1.6	99	3.0	45	1.4	29	0.9	11	0.3	252	7.8		
III	a		0.0	5	0.2	22	0.7	55	1.7	167	5.1	68	2.1	39	1.2	11	0.3	367	11.3		
	b		0.0		0.0		0.0	1	0.0	4	0.1	3	0.1	4	0.1	1	0.0	13	0.4		
	c		0.0	2	0.1	12	0.4	30	0.9	125	3.8	87	2.7	44	1.4	3	0.1	303	9.3		
	not cl.		0.0		0.0		0.0		0.0	11	0.3	8	0.2	5	0.2	6	0.2	30	0.9		
	total	0	0.0	7	0.2	34	1.0	86	2.6	307	9.4	166	5.1	92	2.8	21	0.6	713	21.9		
IV	a		0.0		0.0	1	0.0	1	0.0	6	0.2	6	0.2	5	0.2		0.0	19	0.6		
	b		0.0	1	0.0	7	0.2	13	0.4	63	1.9	43	1.3	25	0.8	5	0.2	157	4.8		
	c		0.0		0.0		0.0		0.0	2	0.1	2	0.1		0.0		0.0	4	0.1		
	not cl.		0.0		0.0		0.0		0.0												
	total	0	0.0	1	0.0	8	0.2	14	0.4	71	2.2	51	1.6	30	0.9	5	0.2	180	5.5		
Total		1	0.0	40	1.2	161	5.0	456	14.0	1,323	40.7	770	23.7	415	12.8	83	2.6	3,249			

Table 2. Type of Treatment

Treatment		Surgery								Radiation				Chem.Immun. Hormon		Others		Total	
		alone		Rad.		Rad. Chem. Immun. Hormon		Chem.Immun. Hormon		alone		Chem.Immun. Hormon		Chem.Immun. Hormon		Others		Total	
		No.	%	No.	%	No.	%	No.	%	No.	%	No.	%	No.	%	No.	%	No.	%
I	a	512	15.8	5	0.2	1	0.0	44	1.4	10	0.3	2	0.1	23	0.7	1	0.0	597	18.4
	b	850	26.2	31	1.0	5	0.2	222	6.8	8	0.2	0	0.0	2	0.1	1	0.0	1,118	34.4
	c	131	4.0	63	1.9	10	0.3	173	5.3	0	0.0	0	0.0	0	0.0	0	0.0	377	11.6
	not cl.	6	0.2	0	0.0	0	0.0	1	0.0	2	0.1	1	0.0	0	0.0	0	0.0	10	0.3
	total	1,519	46.2	109	3.3	16	0.5	440	13.5	20	0.6	3	0.1	25	0.8	3	0.1	1,092	33.0
II	a	44	1.4	13	0.4	2	0.1	29	0.9	0	0.0	0	0.0	0	0.0	0	0.0	88	2.7
	b	44	1.4	20	0.6	2	0.1	83	2.6	0	0.0	0	0.0	0	0.0	1	0.0	149	4.6
	c	2	0.1	0	0.0	0	0.0	7	0.2	3	0.1	0	0.0	2	0.1	0	0.0	14	0.4
	not cl.																		
	total	90	2.7	33	1.0	4	0.1	119	3.7	3	0.1	2	0.1	2	0.1	1	0.0	164	5.0
III	a	72	2.2	25	0.8	14	0.4	255	7.8	0	0.0	0	0.0	1	0.0	0	0.0	367	11.3
	b	3	0.1	1	0.0	2	0.1	5	0.2	1	0.0	0	0.0	1	0.0	0	0.0	13	0.4
	c	34	1.0	32	1.0	46	1.4	190	5.8	1	0.0	0	0.0	0	0.0	0	0.0	303	9.3
	not cl.	1	0.0	0	0.0	2	0.1	11	0.3	7	0.2	5	0.2	4	0.1	0	0.0	30	0.9
	total	110	3.3	60	1.8	63	1.9	261	7.9	8	0.2	5	0.2	6	0.2	1	0.0	393	11.9
IV	a	4	0.1	0	0.0	2	0.1	8	0.2	0	0.0	1	0.0	4	0.1	0	0.0	19	0.6
	b	15	0.5	7	0.2	18	0.6	91	2.8	6	0.2	4	0.1	16	0.5	0	0.0	157	4.8
	c																		
	not cl.	0	0.0	0	0.0	2	0.1	1	0.0	0	0.0	1	0.0	0	0.0	0	0.0	4	0.1
	total	19	0.6	7	0.2	20	0.6	99	3.0	6	0.2	6	0.2	20	0.6	0	0.0	120	3.7
Total		1,718	52.9	197	6.1	106	3.3	1,120	34.5	38	1.2	14	0.4	53	1.6	3	0.1	3,249	

Table 3. 5-Year Result Treatment, Started in 2001

5-year result	No. of patients	%
Alive with no Evidence of the Disease	1,621	72.5
Alive with Carcinoma	60	2.7
Died of Carcinoma	269	12
Died of Other Malignant Tumor	7	0.3
Died of Intercurrent Disease	20	0.9
Cause of Death Unknown	16	0.7
Lost Sight of or Untraced	243	10.9
Total	2,236	

**Table 4. 5-Year Survival by Stage, Treatment Started in 2001**

Stage		Patients treated		5-year survival	
		No.	No.	%	%
I	a	420	1,445	96.7	95.1
	b	763		95.9	
	c	255		90.2	
	not cl.	7		-	
II	a	47	155	97.7	84.6
	b	99		83.4	
	not cl.	9		-	
III	a	268	512	80.1	71.5
	b	9		57.1	
	c	212		64.0	
	not cl.	23		-	
IV	a	11	124	24.2	29.5
	b	111		28.9	
	not cl.	2		-	
Total		2,236		85.4	

**Table 5. 5-Year Survival by Stage and Histological Type, Treatment Started in 2001**

Stage	Histology	Patients treated		5-year survival
		No.	%	%
I	Endometrioid type	1,323	91.6	95.8
	Serous, Mucinous, Clear cell type	54	3.7	88.2
	Others	67	4.6	85.3
II	Endometrioid type	133	85.8	88.2
	Serous, Mucinous, Clear cell type	7	4.5	85.7
	Others	15	9.7	51.4
III	Endometrioid type	431	84.2	76.9
	Serous, Mucinous, Clear cell type	36	7.0	57.6
	Others	45	8.8	30.6
IV	Endometrioid type	84	67.7	36.3
	Serous, Mucinous, Clear cell type	16	12.9	12.5
	Others	24	19.4	17.5
Total	Endometrioid type	1,971	88.2	88.7
	Serous, Mucinous, Clear cell type	113	5.1	67.7
	Others	151	6.8	54.7

**Table 6. 5-Year Survival by Stage and Grade, Treatment Started in 2001**

Stage	Grade	Patients treated		5-year survival
		No.	%	%
I	Grade 1	872	60.3	96.6
	Grade 2	358	24.8	93.7
	Grade 3	122	8.4	93.1
	Not Graded	93	6.4	88.1
II	Grade 1	68	43.9	89.4
	Grade 2	45	29.0	88.2
	Grade 3	23	14.8	76.9
	Not Graded	19	12.3	68.0
III	Grade 1	198	38.7	84.7
	Grade 2	160	31.3	73.3
	Grade 3	84	16.4	59.9
	Not Graded	70	13.7	43.7
IV	Grade 1	22	17.7	59.1
	Grade 2	42	33.9	31.0
	Grade 3	30	24.2	10.9
	Not Graded	30	24.2	20.2
Total	Grade 1	1,160	51.9	93.4
	Grade 2	605	27.2	83.6
	Grade 3	259	11.6	71.6
	Not Graded	212	9.5	62.3

**Table 7. 5-Year Survival by Histological Type and Grade, Treatment Started in 2001**

Histology	Grade	Patients treated		5-year survival
		No.	%	%
Endometrioid type	Grade 1	1,133	57.5	93.8
	Grade 2	569	28.9	84.8
	Grade 3	239	12.1	74.5
	Not Graded	30	1.5	77.1
Serous, Mucinous, Clear cell type	Grade 1	19	16.8	72.6
	Grade 2	24	21.2	68.3
	Grade 3	5	4.4	40.0
	Not Graded	65	57.5	68.6
Others	Grade 1	8	5.3	80.0
	Grade 2	12	7.9	52.4
	Grade 3	15	9.9	40.0
	Not Graded	116	76.8	55.5

**Table 8. 5-Year Survival by TNM Classification, Treatment Started in 2001**

TNM Stage			Patients treated		5-year survival
			No.	%	%
T1a	N0	M0	421	19.5	96.5
T1b	N0	M0	798	36.9	95.0
T1c	N0	M0	271	12.5	90.9
T2a	N0	M0	49	2.3	97.8
T2b	N0	M0	99	4.6	85.4
T3a	N0	M0	173	8.0	79.6
T3b	N0	M0	6	0.3	60.0
T3c	N0	M0	8	0.4	62.5
T4	N0	M0	7	0.3	57.1
T1a	N1	M0	1	0.0	100.0
T1b	N1	M0	22	1.0	90.5
T1c	N1	M0	48	2.2	78.7
T2a	N1	M0	2	0.1	50.0
T2b	N1	M0	17	0.8	75.0
T3a	N1	M0	48	2.2	47.8
T3b	N1	M0	6	0.3	20.0
T3c	N1	M0	66	3.1	58.0
T4	N1	M0	5	0.2	20.0
Any T	AnyN	M1	116	5.4	32.2

Figure 1.

Kaplan-Meier Estimated Overall Survival Curves of Corpus Cancer Patients by FIGO Stage, Treatment Started in 2001

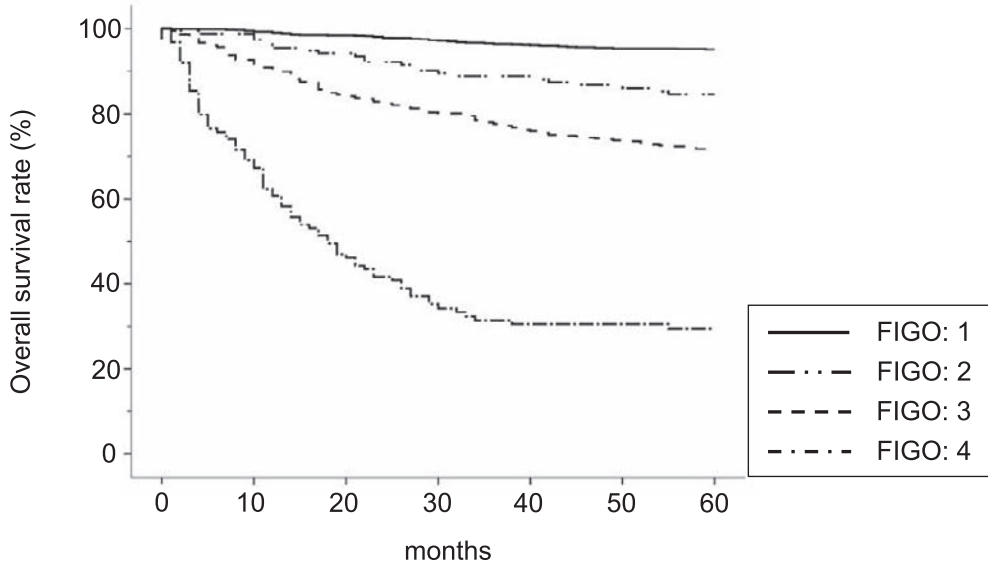


Figure 2.

Kaplan-Meier Estimated Overall Survival Curves of Corpus Cancer Patients by Grade of Differentiation, Treatment Started in 2001

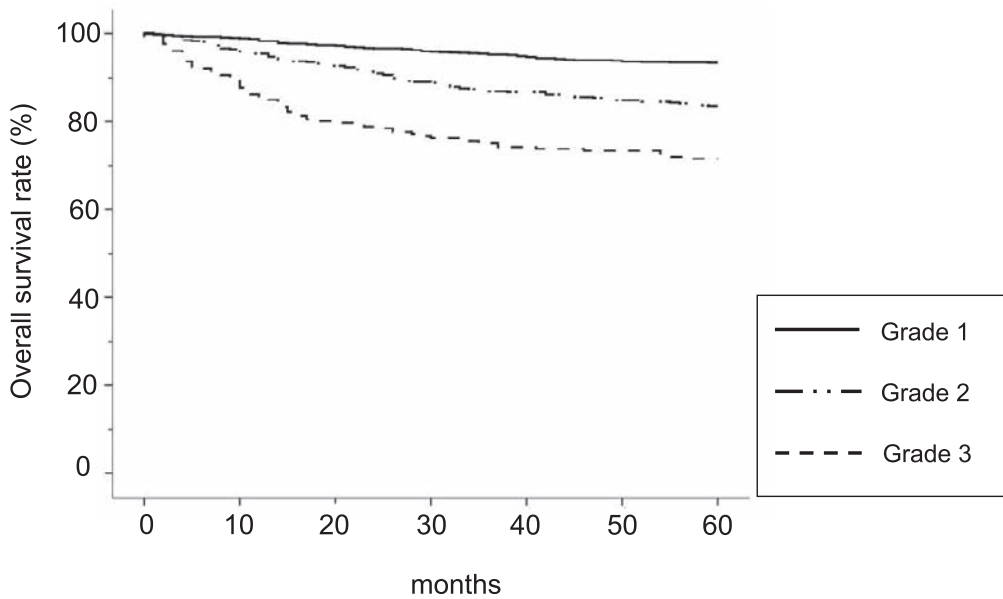


Figure 3.

Kaplan-Meier Estimated Overall Survival Curves of Corpus Cancer Patients by FIGO 1 Substage, Treatment Started in 2001

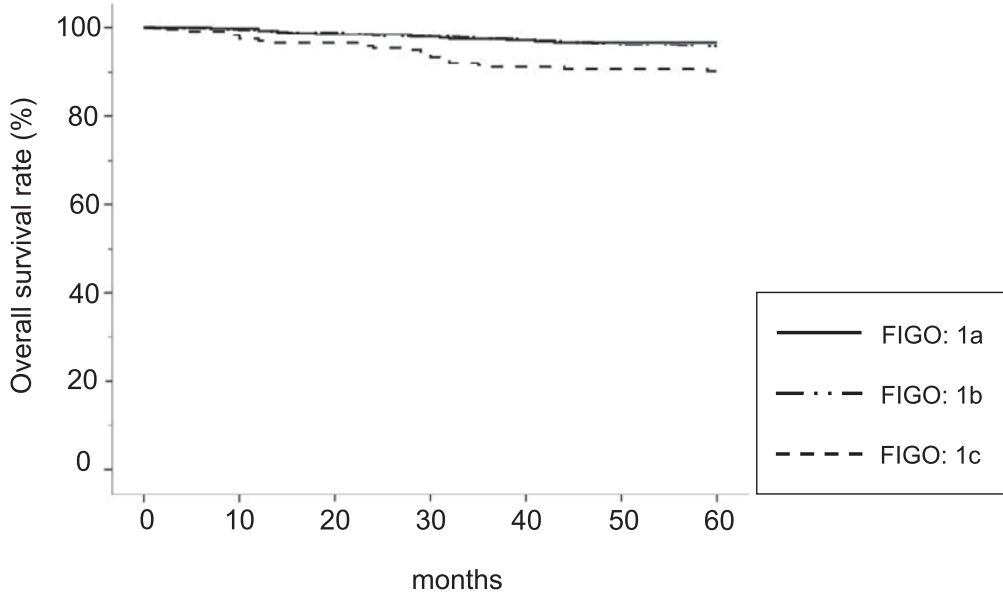


Figure 4.

Kaplan-Meier Estimated Overall Survival Curves of Stage 1 Corpus Cancer Patients by Grade of Differentiation, Treatment Started in 2001

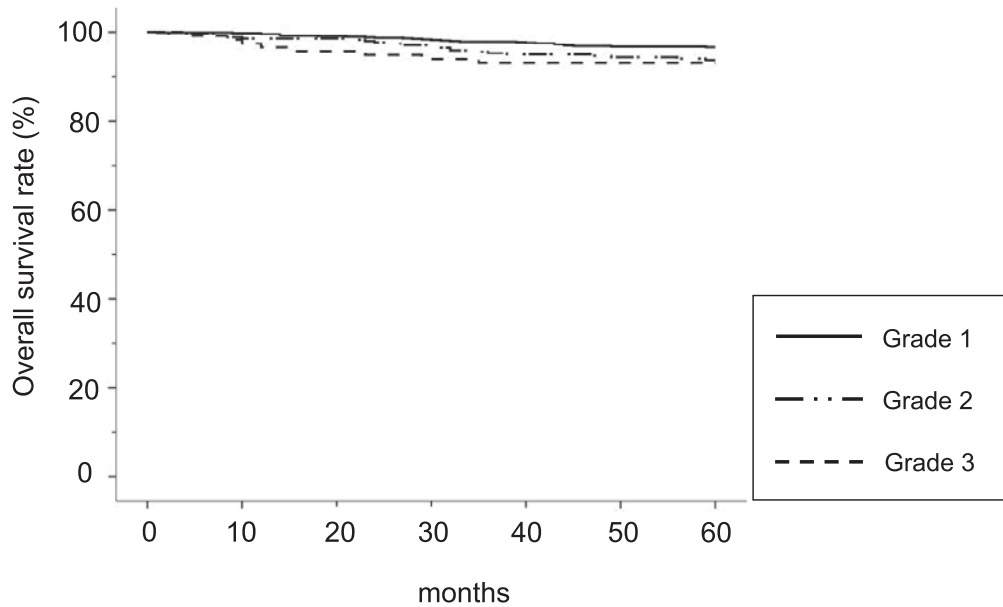


Figure 5.

Kaplan-Meier Estimated Overall Survival Curves of Corpus Cancer Patients by FIGO 2 Substage, Treatment Started in 2001

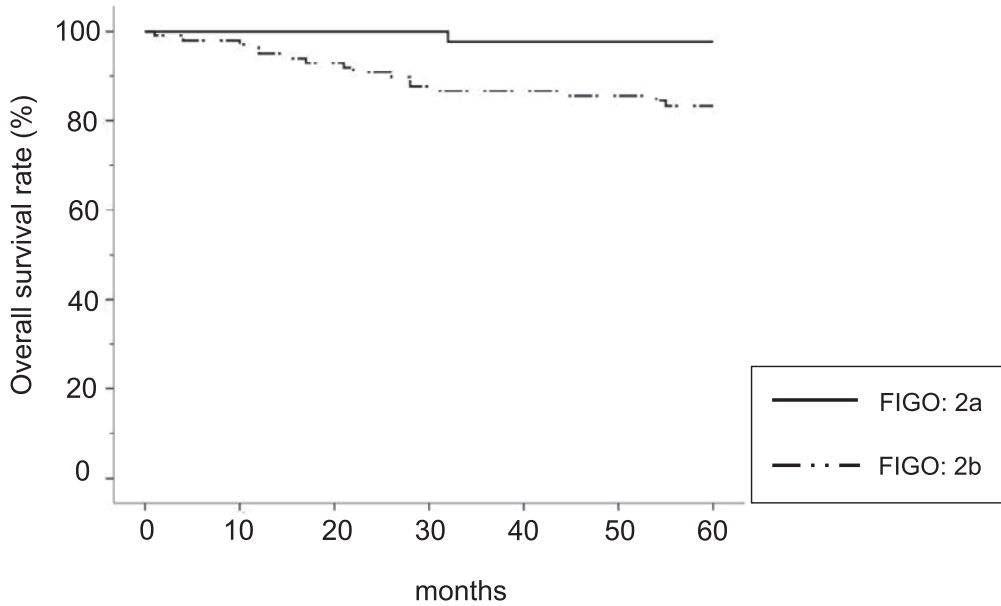


Figure 6.

Kaplan-Meier Estimated Overall Survival Curves of FIGO Stage 2 Corpus Cancer Patients by Grade of Differentiation, Treatment Started in 2001

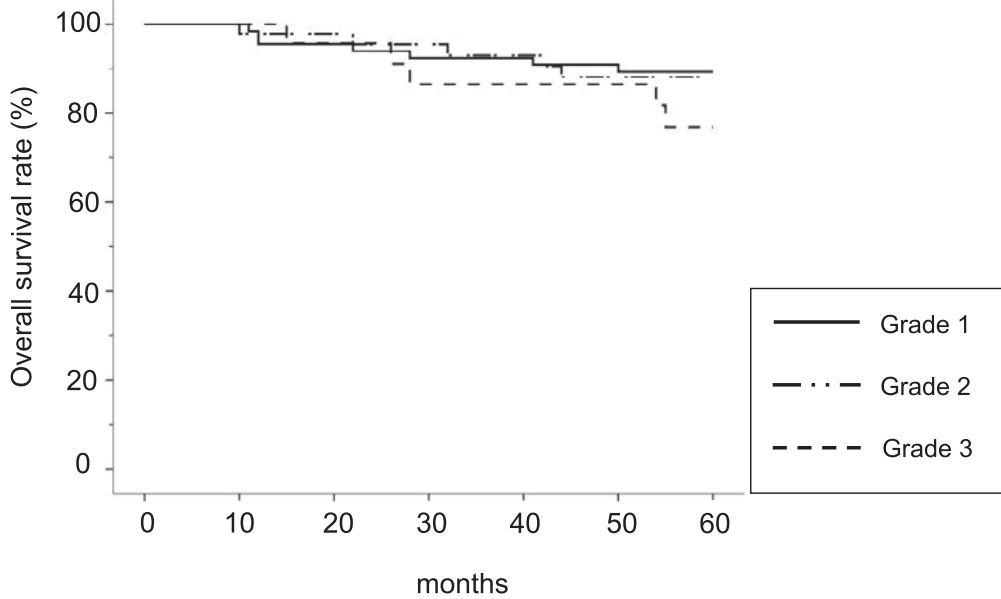


Figure 7.

Kaplan-Meier Estimated Overall Survival Curves of Corpus Cancer Patients by FIGO 3 Substage, Treatment Started in 2001

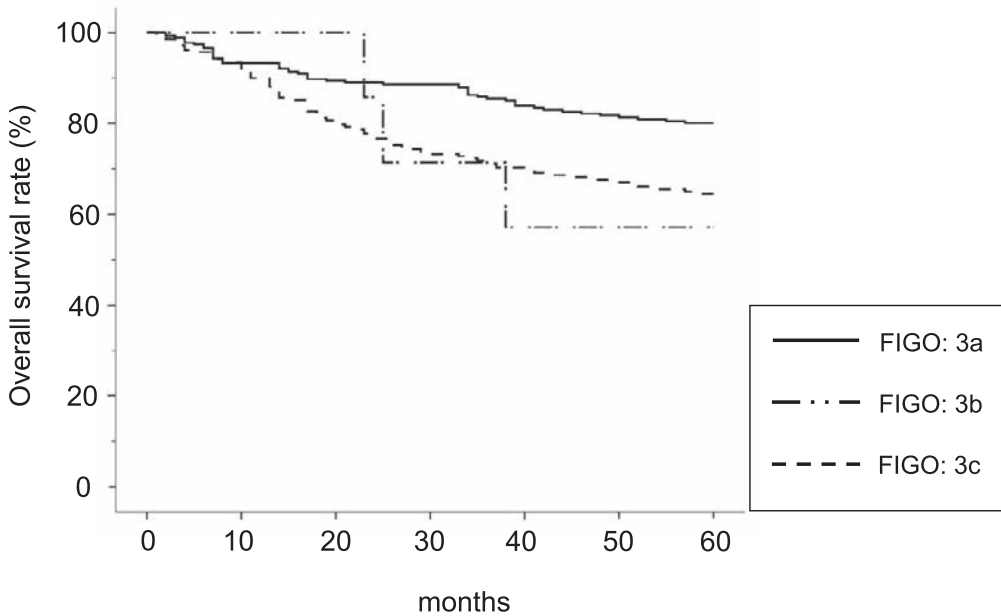


Figure 8.

Kaplan-Meier Estimated Overall Survival Curves of Stage 3 Corpus Cancer Patients by Grade of Differentiation, Treatment Started in 2001

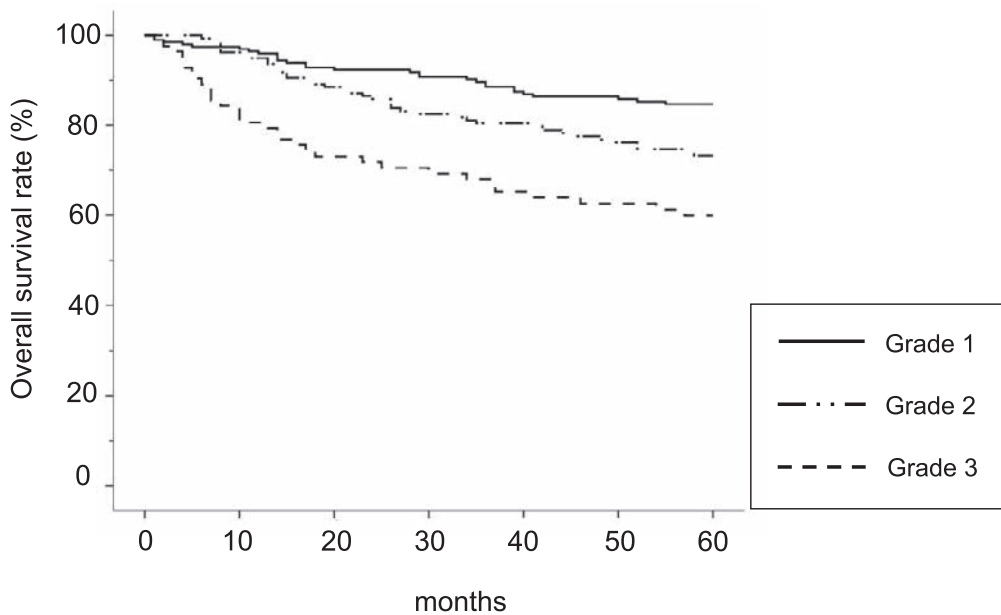


Figure 9.

Kaplan-Meier Estimated Overall Survival Curves of Corpus Cancer Patients by FIGO 4 Substage, Treatment Started in 2001

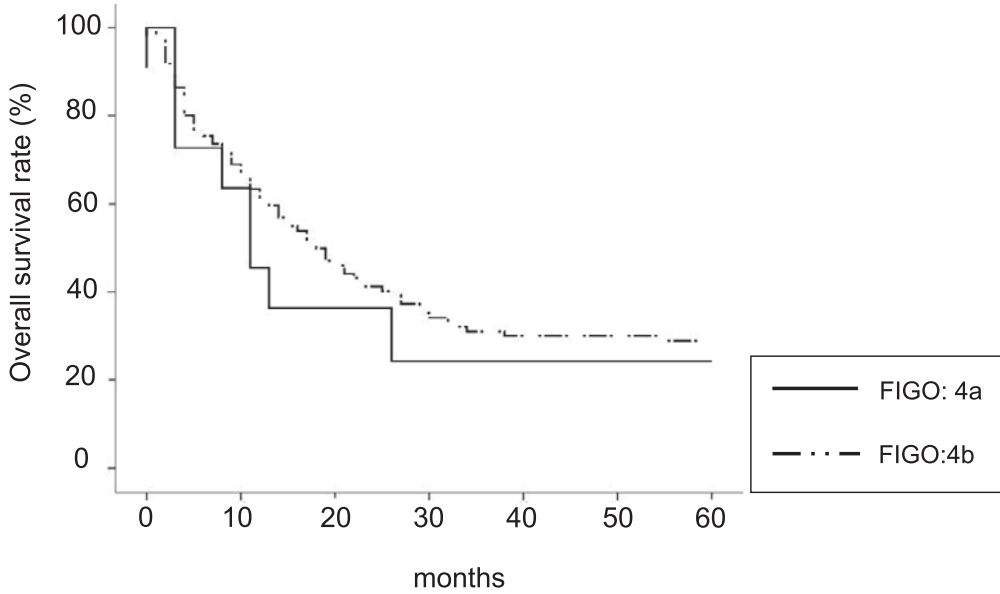


Figure 10.

Kaplan-Meier Estimated Overall Survival Curves of Stage 4 Corpus Cancer Patients by Grade of Differentiation, Treatment Started in 2001

